



**SHESTAKOV**  
Yacht Sales

## **ABORA - AMEL**



**Builder:** [Amel](#)

**LOA:** 56' 0" (17.30 m)

**Year Built:** 2025

**Beam:** 16' 0" (5 m)

**Model:** Amel 55

**Max Draft:** 7' 3" (2.20 m)

**Price:** \$695,656.14 USD Subject to change.

**Cruising Speed:** 8.50 Knots (9.78 MPH)

[See full listing on our website](#)

**Location:** Phuket, Thailand

**Max Speed:** 10 Knots (11.51 MPH)

If you would like to buy a yacht **ABORA - AMEL** or would like help answering any questions concerning purchasing, selling, or chartering a yacht, please call **+1(954)274-4435** or click here on <https://shestakovyachtsales.com>

---

# TABLE OF CONTENTS

---

<b>OVERVIEW .....</b>	<b>3</b>
<b>SPECIFICATIONS .....</b>	<b>5</b>
Basic Information .....	5
Dimensions .....	5
Speed, Capacities and Weight .....	5
Accommodations .....	5
Hull and Deck Information .....	6
Engine Information .....	6
<b>GALLERY .....</b>	<b>7</b>
<b>CONTACTS .....</b>	<b>11</b>

## OVERVIEW

---

Amel 55 ABORA (2015) – Phuket, Thailand. Offered from private family ownership and never used for charter, ABORA is an Amel 55 configured in the sought-after Pack Plus Comfort specification, designed for serious ocean passages and extended liveaboard independence. She pairs Amel's celebrated ketch layout and center-cockpit arrangement with the shipyard's trademark ease of operation, delivering a push-button sailing experience and protected helm station that make short-handed, all-weather voyaging straightforward for couples or small crews. Purpose-built for self-sufficiency, this yacht combines refined onboard comfort with the robust systems and tankage required for long-distance cruising and remote anchoring.

Her equipment list reinforces that capability: the ketch rig is fitted with electric furling on both main and mizzen, while Reckmann electric furlers handle the genoa and staysail, and sail handling is further simplified by seven Lewmar electric/manual winches. Propulsion is provided by a Volvo Penta D3-110 (110 hp) with 1,296 hours recorded, paired with an Onan 11 kW generator for hotel loads. Fresh water autonomy is assured by a Dessalator watermaker rated at 240 l/h. Communications and navigation are comprehensive, with Starlink and FleetBroadband FB250 complemented by Iridium for redundancy, and a professional electronics suite including Furuno AIS, Furuno radar, B&G H3000 instruments and a Furuno NavPilot autopilot. Close-quarter handling and comfort features include an electric bow thruster, full air conditioning plus Webasto diesel heating, a hydraulic gangway, and an electric anchor windlass with a secondary electric windlass as backup. The drivetrain employs a hydraulic transmission with shaft brake and a folding propeller fitted with a Spurs rope cutter for propulsion efficiency and fouling protection.

Accommodation is practical and elegant, with a three-cabin, two-head layout finished in warm joinery that suits extended living aboard. Capacities and

dimensions underline her bluewater intent: LOA 17.30 m, beam 4.99 m, draft 2.21 m, displacement approximately 24 t, fuel capacity 900 l and freshwater capacity 800 l. Safety and tender equipment include a Zodiac eight-person liferaft, an AB aluminium-bottom dinghy and a Mercury 9.9 hp outboard. The owner reports that all principal mechanical systems received servicing in April 2026. Comparable yachts in the premium passagemaker sector would include models such as the Hallberg-Rassy 57, Oyster 56 and Discovery 55, among others. ABORA is presently lying in Phuket, Thailand; viewings are available by appointment and further photographs and full particulars can be provided on request.

# SPECIFICATIONS

---

## Basic Information

---

**Model Year:**  
2025

**Country:**  
Thailand

**Year Built:**  
2025

## Dimensions

---

**LOA:**  
56' 0" (17.30 m)

**Max Draft:**  
7' 3" (2.20 m)

**Beam:**  
16' 0" (5 m)

## Speed, Capacities and Weight

---

**Cruise Speed:**  
8.50 Knots (9.78 MPH)

**Water Capacity:**  
211.34 Gallons

**Max Speed:**  
10 Knots (11.51 MPH)

**Fuel Capacity:**  
2.38 Gallons

## Accommodations

---

**Total Heads:**  
2

## Hull and Deck Information

---

**Hull Material:**

Fiberglass and Plastic Yachts

**Hull Designer:**

N/A

**Deck Material:**

Fiberglass

**Interior Designer:**

N/A

**Hull Configuration:**

N/A

## Engine Information

---

**Engines:**

1

**Engine Type:**

Inboard

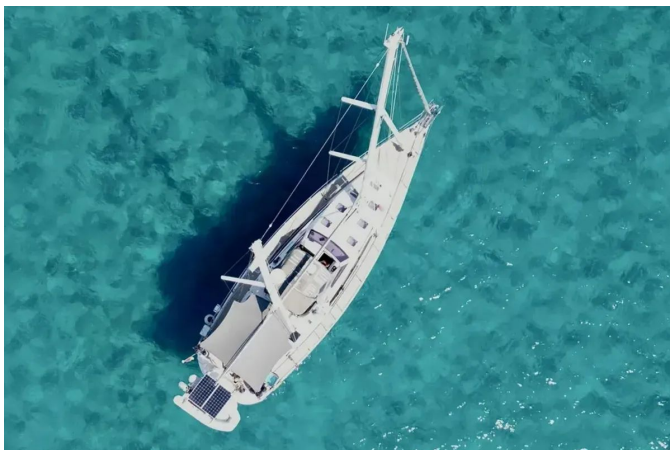
**Manufacturer:**

Volvo Penta

**Fuel Type:**

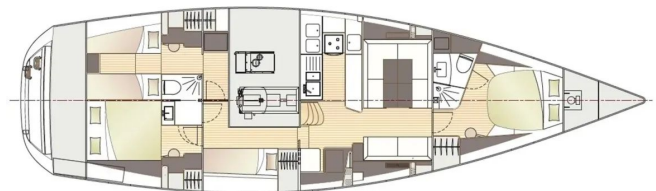
Diesel

# GALLERY









# CONTACTS

---

Shestakov Yacht Sales is a brokerage company specializing in the sale and service of yachts worldwide. The company offers services for buying and selling both new and used motor yachts, sailing vessels, and luxury superyachts. They also provide yacht registration, insurance, technical maintenance, crew selection, and charter organization services across the U.S., Canada, Latin America, the Caribbean, and the Bahamas.

The founder and lead broker of the company is Andrey Shestakov, a licensed and certified expert with extensive experience in marine engineering and shipbuilding.

The company has an extensive network of partnerships with major yacht manufacturers worldwide and provides services in multiple languages, including Russian, Ukrainian, Spanish, and English. The office is in Dania Beach, Florida, USA.

For more information and to view available yachts, you can visit the company's official website: <https://shestakovyachtsales.com>

## Contact details

---

**Phone:** +1(954)274-4435

**Email:** [andrey@shestakovyachtsales.com](mailto:andrey@shestakovyachtsales.com)

## Address

---



1380 Weeping Willow Way, Hollywood,  
Florida 33019