

SILHOUETTE 800 - MYSTIQUE YACHTS



Builder: [MYSTIQUE YACHTS](#)

Year Built: 2023

Model: N/A

Price: \$3,799,000 USD Subject to change.

[See full listing on our website](#)

Location: Fort Lauderdale, United States

LOA: 78' 0" (24 m)

TABLE OF CONTENTS

OVERVIEW	3
SPECIFICATIONS	4
Basic Information	4
Dimensions	4
Speed, Capacities and Weight	4
Accommodations	4
Hull and Deck Information	5
Engine Information	5
GALLERY	6
DETAILED DESCRIPTION	14
CONTACTS	17

OVERVIEW

The 2023 Silhouette 800 luxury sailing catamaran is a beguiling blend of speed, clever engineering, and refined elegance. Conceived for effortless ocean-crossing, this multihull cruising yacht features a generous salon-to-cockpit flow, a commanding flybridge helm and a capacious five-stateroom layout welcoming up to ten guests. Built to CE Category A standards and driven by twin Volvo D3s with dual Onan gensets, she delivers dependable range and hushed comfort, standing out as a flybridge yacht and bluewater cruiser for extended passages and sophisticated entertaining afloat.

SPECIFICATIONS

Basic Information

Category:
Sail yachts

Year Built:
2023

Model Year:
2023

Country:
United States

Dimensions

LOA:
78' 0" (24 m)

Speed, Capacities and Weight

Gross Tonnage:
75.23 Pounds

Fuel Capacity:
554.76 Gallons

Water Capacity:
924.6 Gallons

Accommodations

Sleeps:
5

Crew Cabin:
2

Total Heads:
6

Crew Berths:
6

Hull and Deck Information

Hull Material:

Fiberglass and Plastic Yachts

Hull Designer:

N/A

Deck Material:

Carbon Fiber

Interior Designer:

N/A

Hull Configuration:

Catamaran

Engine Information

Engines:

2

Engine Type:

Inboard

Manufacturer:

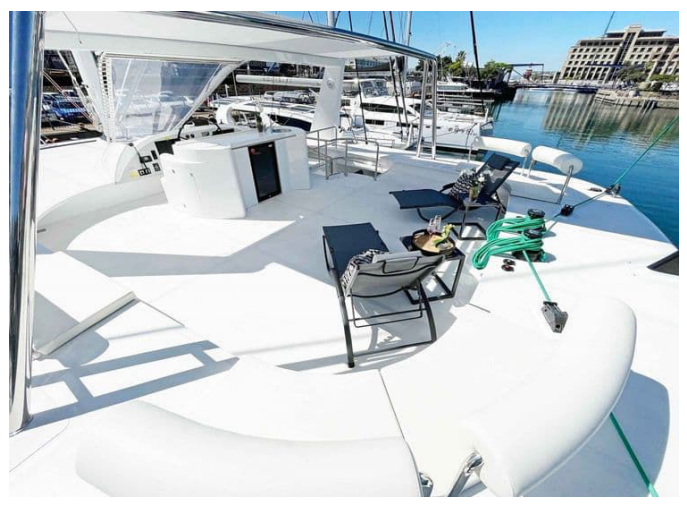
Volvo

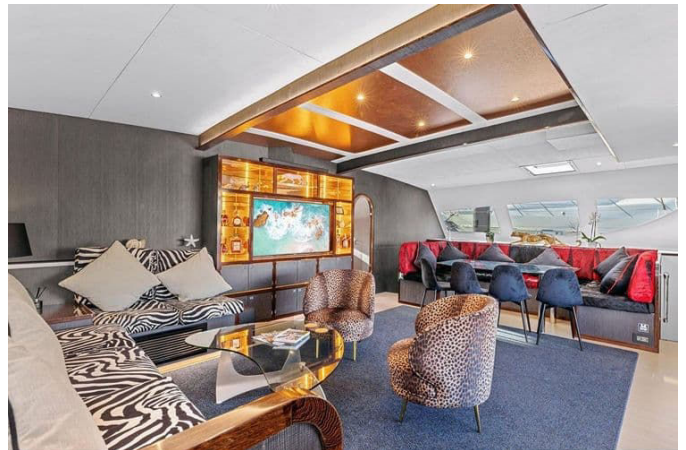
Fuel Type:

Diesel

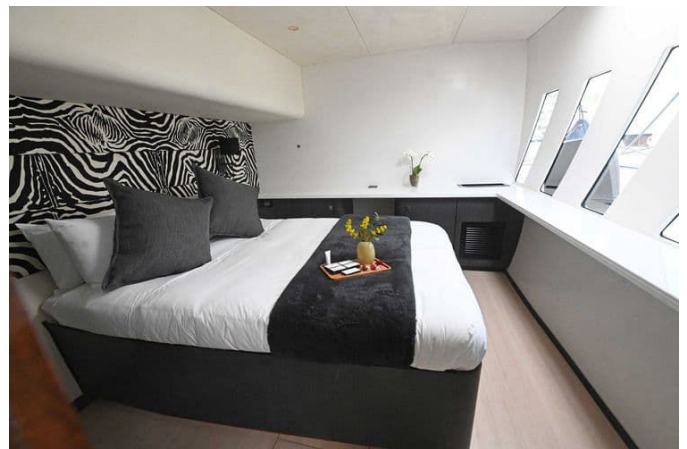
GALLERY

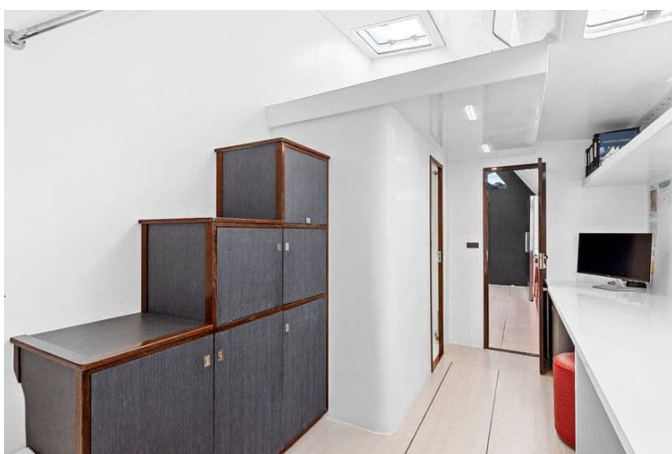
















DETAILED DESCRIPTION

2023 Mystique Silhouette 800

The Silhouette 800 epitomizes innovation and refinement in the realm of large luxury sailing catamarans, a showcase of pedigree from designers whose creations rank among the most coveted in the category. Every contour and component signals craftsmanship, quality, and thoughtful intent, underpinned by a seasoned builder with a legacy of seventy-six-foot catamarans that have claimed prestigious honors, including the South African Boating Award for best sailing craft over 10 meters and the Queen of the Miami Boat Show on multiple occasions. Fresh from a successful shakedown passage direct from the factory in South Africa to the USA, she arrives proven in performance and reliability. Boarding is effortless via wide port and starboard steps that lead to the transom, with two further steps delivering you to the generous cockpit. An expansive, electronically operated hi/lo swim platform multiplies possibilities at the touch of a button, serving with equal ease as tender lift, lounging terrace, or swimming stage. The cockpit invites long, unhurried moments with an aft fixed dining table embraced by a fixed settee and six folding chairs, two sun beds, waterproof marine speakers, and a beverage refrigerator—an ideal arena for seamless socializing and quiet repose alike. Through wide sliding doors, the main saloon opens as an elegant, light-filled sanctuary. To port, a built-in L-shaped settee frames a glass coffee table; to starboard, a built-in U-shaped settee wraps a glass dining table complemented by four extra dining chairs and two large lounge chairs, enabling a large party to gather in comfort. Entertainment is assured by a 55" Samsung TV with sound bar and a Fusion media player, while five teak chairs, an icemaker, and a drinks fridge round out the space to anticipate every indulgence. Accommodations are arranged with rare generosity: five guest cabins and two crew cabins provide for 10 guests

and 6 crew. From the saloon's forward centerline, the on-deck master suite offers single-level living—an invaluable comfort for owners wishing to avoid steps—featuring a king-size island bed bathed in natural light with remote-controlled roller blinds, a spacious private ensuite on the same level, a vanity dressing table, a walk-in closet, and a 40" Samsung TV with sound bar. Descending the port-side steps from the saloon, the galley reveals itself as a professional-grade workspace with ample refrigeration, expansive counters, and large storage cupboards for effortless service. Premium appliances include two Siemens upright fridges, a Siemens upright freezer, an LG microwave oven with grill, an Elba oven/grill, an Elba gas five-burner cooktop, and a Siemens dishwasher. Aft to port, the guest cabin features a queen-size bed, hanging locker, and private ensuite. To starboard of the galley, the secluded captain's cabin ensures well-deserved privacy with a queen-size loft bed, desk and cupboards, and a private ensuite with a separate frameless shower. Forward of the captain's cabin, a dedicated laundry/workshop houses a Commercial Speed Queen washer and dryer. Returning to the main saloon, two additional stairways descend to three starboard guest cabins, each appointed with a queen-size bed, a hanging locker, and a private ensuite. The forward crew cabin, reached via a hatch on the starboard foredeck, provides a queen-size bed and a single bed, ventilation fans, hanging and storage cupboards, and a private ensuite. Sail handling is centralized on the expansive open flybridge to streamline operations, reduce the need for a large crew, and elevate safety for everyone aboard. From the cockpit, a stainless-steel staircase leads to the flybridge, a sweeping social nexus with panoramic sea views. Here, a beverage refrigerator, sink, 7" waterproof marine speakers paired with a subwoofer, and abundant seating create an alfresco lounge that is easily shaded by a bimini when desired. The centerline flybridge helm station delivers a commanding vantage point—especially valuable on lively days afloat—its dash housing a Raymarine suite that includes GPS plotter, radar, sounder, autopilot, VHF, and a thermal night vision camera. Underway, shaft-drive twin Volvo D3 engines at

200 HP each provide dependable thrust. Away from the dock, twin Onan generators supply 240V power to run every amenity, including Aqua Air air conditioning and a Sea Recovery water maker. Built to CE category A standards, the Silhouette 800 unites oceanic capability with designer poise. With modern amenities and a profoundly considered layout, the 2023 Mystique Silhouette 800 Sail Catamaran sets a new benchmark in luxury sailing catamarans and is primed for unforgettable passages.

CONTACTS

Shestakov Yacht Sales is a brokerage company specializing in the sale and service of yachts worldwide. The company offers services for buying and selling both new and used motor yachts, sailing vessels, and luxury superyachts. They also provide yacht registration, insurance, technical maintenance, crew selection, and charter organization services across the U.S., Canada, Latin America, the Caribbean, and the Bahamas.

The founder and lead broker of the company is Andrey Shestakov, a licensed and certified expert with extensive experience in marine engineering and shipbuilding.

The company has an extensive network of partnerships with major yacht manufacturers worldwide and provides services in multiple languages, including Russian, Ukrainian, Spanish, and English. The office is in Dania Beach, Florida, USA.

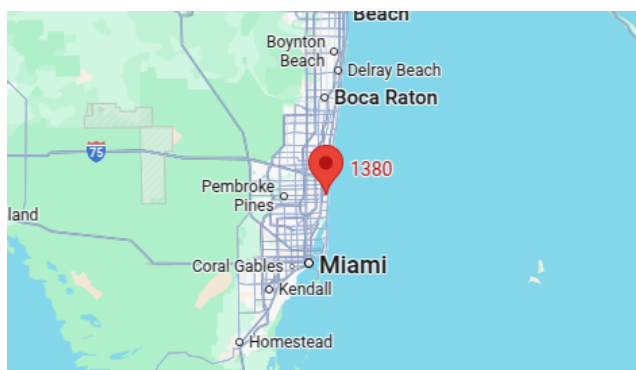
For more information and to view available yachts, you can visit the company's official website: <https://shestakovyachtsales.com>

Contact details

Phone: +1(954)274-4435

Email: andrey@shestakovyachtsales.com

Address



1380 Weeping Willow Way, Hollywood,
Florida 33019