



DEVIL'S GAUNTLET - CUSTOM BUILT



Builder: [CUSTOM BUILT](#)

Beam: 19' 0" (5.89 m)

Year Built: 1977

Max Draft: 29' 6" (9 m)

Model: 80 Brigantine

Price: \$998,000 USD Subject to change.

[See full listing on our website](#)

Location: Long Beach, United States

LOA: 80' 0" (24.38 m)

If you would like to buy a yacht **DEVIL'S GAUNTLET - CUSTOM BUILT** or would like help answering any questions concerning purchasing, selling, or chartering a yacht, please call **+1(954)274-4435** or click here on <https://shestakovyachtsales.com>

TABLE OF CONTENTS

OVERVIEW 3

SPECIFICATIONS 7

 Basic Information 7

 Dimensions 7

 Speed, Capacities and Weight 7

 Accommodations 7

 Hull and Deck Information 8

 Engine Information 8

GALLERY 9

DETAILED DESCRIPTION 21

CONTACTS 22

OVERVIEW

New to market — a rare chance for the discerning yachtsman. 1977 Custom 80' Brigantine Motorsailer — "The Devil's Gauntlet" Open to trade considerations for quality 90'+ yachts on the U.S. East Coast. Step aboard "The Devil's Gauntlet," a singular, storied and iconic luxury motorsailer crafted at Pillar Point, California with deep technical input from the renowned Philip & Son Shipyard of Dartmouth, England. She is a faithful, full-scale recreation of the 1768 Brigantine "Sultana," originally commissioned by the Royal Navy to patrol the Massachusetts coastline, deter piracy, curb smuggling, and enforce customs duties—a classic tall ship reborn as a bluewater cruiser with modern comforts. This classic sailing yacht carries twin wooden masts and a proud bow pulpit, with the helm and upper rudder post set aft of a raised companionway. A gently forward-sloping after deck meets a stout boom gallows just aft of the wheel. Descend a seven-rung wooden ladder into a generous main salon featuring a full wet bar with sink and serving counter, a U-shaped lounge, granite-topped end table, and mirrored cabinetry. The centerline passage leads forward down two steps: to starboard sit the main AC panel, guest head, and both aft and forward guest cabins; to port you'll find fuel filter access, the U-shaped galley, and the aft/forward guest staterooms. A wooden swing door from the port forward cabin opens to the V-cabin, currently purposed as a tools and spares workshop. Aft lies the owner's stateroom with private ensuite. Ideal as a charter yacht, liveaboard yacht, or expedition-ready adventure platform. Her hull is built of Kevlar/polymer composite—celebrated for exceptional rigidity, longevity, and performance—mitigating many drawbacks of traditional fiberglass. This construction method remains favored by respected shipyards across the globe and underscores the yacht's superyacht-level durability. Refit stem-to-stern between 2019–2022, "The Devil's Gauntlet" is a fully operational, ocean-capable motorsailer with refined amenities and the soul of a tall ship. She accommodates up to 14 guests across

five staterooms. Currently lying in Long Beach, CA with a transferable slip, she stands ready for her next chapter. Extensively surveyed in February 2025 with USCG present: the vessel received an "Excellent" overall rating and a fair market valuation exceeding \$3,000,000. USCG COI requirements are scheduled for October, after which asking price is expected to rise. Survey and records available to qualified, serious parties. Notable Features - Custom build with no expense spared - Significant commercial/charter potential with proven revenue history - Starlink high-speed internet - On-demand hot water - LED lighting throughout - Electroscan waste system - Watermaker (300 GPD) - 800W solar array with charge controller - 500W wind generator - All sails and rigging intact and in excellent condition - New custom Windjammer sails - New dripless shaft seal (Sept 2025) - Two spare propellers - Anchor windlass with dedicated battery bank and charger - Full bar Navigation & Electronics - Garmin GPS/Chartplotter - Garmin radar - Magnetic compass - Depth sounder - VHF offshore marine radio - High-water alarm system - 3500W AM/FM Bluetooth sound system (USB + hands-free) - Five flat-screen TVs with DVD players - Air horn - Fire alarms in all cabins - Three CO2 alarms plus propane alarm system (USCG-compliant) - New USCG-compliant throw rings with strobes Propulsion & Mechanical - Cummins 210 HP turbo diesel (approx. 1,038 hours) - TwinDisc Tech transmission (four documented oil changes) - Dripless shaft seal installed Sept 8, 2025 - Two spare propellers - Engine sea strainer - Secondary sea strainer for watermaker Deck & Anchoring - Electric windlass with dedicated battery bank and charger - 300' of 3/8" anchor chain - New 100 lb ship's anchor plus 75 lb swivel shovel anchor - Six large black fenders - New dock lines - Ship's bell - Built-in rod holders Electrical Systems - Six 6V house batteries - Two 8D start batteries - New 5000W Heart inverter/charger - 12V panel, 120A panel, and 50A shore power panel - Dual shore-power inlets (port & starboard) with weather protection; 110V outlets fore and aft - 100' new 50A shore cord - 200' of 30A shore cord plus 50-to-30A splitter - All interior/exterior lighting in LED - Blue LED step lighting - GFI outlets throughout - Four automatic bilge

pumps; auxiliary 30A gasoline genset - Flexible solar panels and wind generator Water & Plumbing - Spectra 300 GPD watermaker - Approx. 365-gallon fuel capacity via USCG-certified aluminum tanks - 110 gallons fresh water (two 55-gallon tanks) - 12V pressurized domestic water - 12V gray-water discharge pumps for sinks/showers - 120V backup freshwater pump - 110V sump/backup water pump - Two electric Jabsco toilets - Electroscan waste treatment - 50-gallon holding tank (pump-out only) - Duckbill-valved thru-hulls; quick-connect shore water inlets port and starboard Fire & Safety - Fireboy Halon engine-room system with manual override - Ten ABC fire extinguishers - 47 USCG adult life jackets - 24 USCG child life jackets - Fire alarms in all rooms - CO2 and propane alarms - All below-waterline hoses fitted with duck valves Climate Control & Comfort - Two air-conditioning units - Fans in all cabins - New tankless propane water heater (on-demand, 7/2025) - Owner's bath with large 6' tub, waterfall shower, head, and sink - Second head with half-tub, shower, toilet, and bench - Full-size washer and dryer Galley - Force 10 propane stove/oven - Full-size microwave - Stainless steel sink - Built-in walnut cutting board - Full-size side-by-side 120V refrigerator/freezer - Brand-new stand-up two-door 12V refrigerator/freezer for catering - Garbage compactor - Two 120V ice makers - Coffee maker - Italian granite countertops - Above-counter Italian stone vessel sinks Accommodations - Sleeps 10-12: - Three full beds - Two double bunks - Five single bunks - Convertible salon for two - All berths sized to accommodate two adults Rigging & Hardware - Block and tackle: - Manufactured in Norway - Norwegian ash with Kevlar rollers - 880 stainless pins - Solid brass fasteners (rated for 50 years with proper care) Standing Rigging - Galvanized steel (untarred and untwined for USCG inspection compliance) - Coated in black Flex Seal for protection and a refined aesthetic Running Rigging - New England Ropes synthetic manila — premium specification Ratlines - Spun Dacron, tar-dipped for longevity and traditional appearance Woodwork - Masts, yards, booms, bowsprit, stepped mast, and flagpoles: - All in new Oregon white pine - Deadeyes, belaying pins, racks, and

all hatches: - Crafted from new African mahogany Rudder - Length: 22 feet - Material: solid mahogany - Build: bronze-fastened, glue-laminated, and glass-encased for durability Deck & Safety Features - Bownet constructed from heavy-duty commercial tuna netting - Rated to comfortably and safely support 10 adults Through-Hull Valves - Five brand-new bronze ball valves Metal Components - All metalwork hand-fabricated - Fully galvanized for zero corrosion A singular blend of heritage and modern engineering, "The Devil's Gauntlet" is a luxury motorsailer, classic tall ship brigantine, bluewater cruiser, liveaboard-capable sailing yacht, and charter-ready platform—all in one timeless silhouette.

SPECIFICATIONS

Basic Information

Category:
Sail yachts

Year Built:
1977

Sub category:
Motorsailers for Sale

Country:
United States

Model Year:
1977

Dimensions

LOA:
80' 0" (24.38 m)

Max Draft:
29' 6" (9 m)

Beam:
19' 0" (5.89 m)

Speed, Capacities and Weight

Water Capacity:
110 Gallons

Fuel Capacity:
220 Gallons

Accommodations

Total Heads:
2

Hull and Deck Information

Hull Material:

Fiberglass and Plastic Yachts

Hull Designer:

N/A

Deck Material:

Composite

Interior Designer:

N/A

Hull Configuration:

N/A

Engine Information

Engines:

1

Engine Type:

Inboard

Manufacturer:

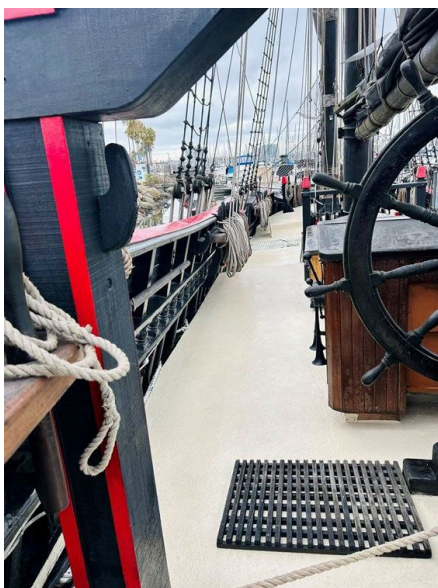
Cummins

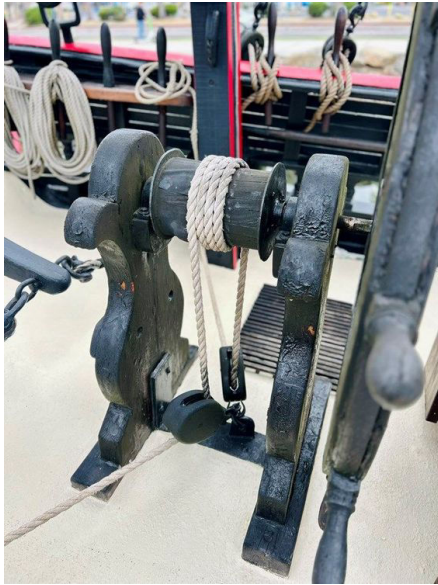
Fuel Type:

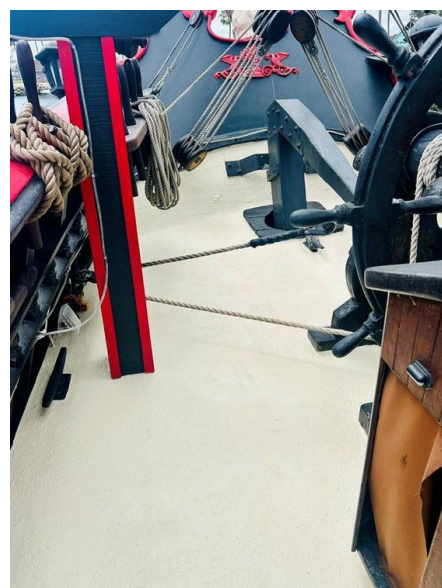
Diesel

GALLERY

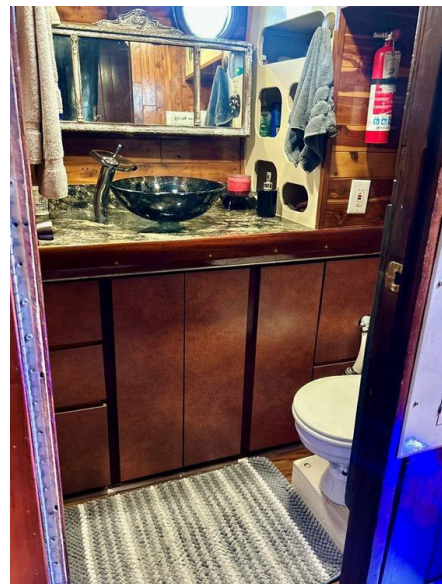


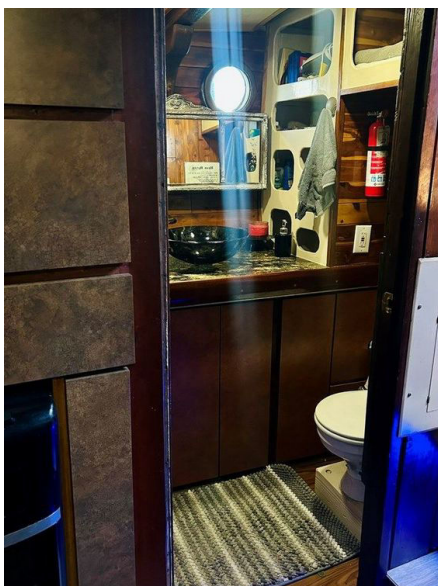
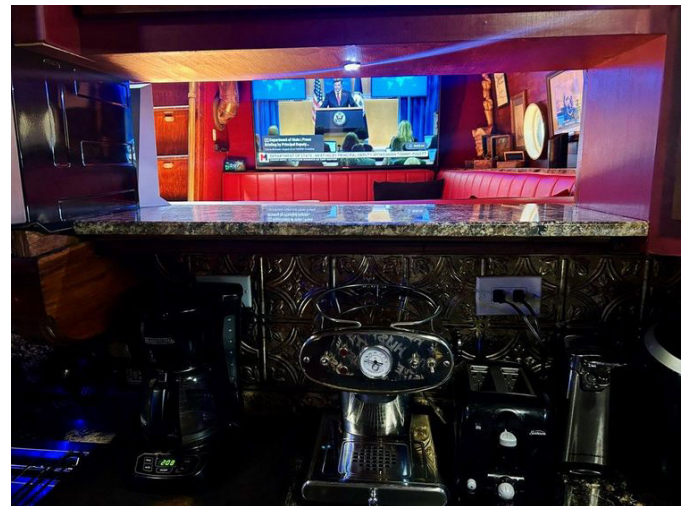
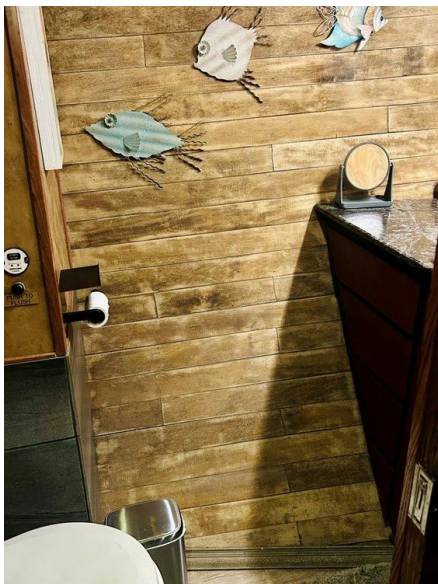


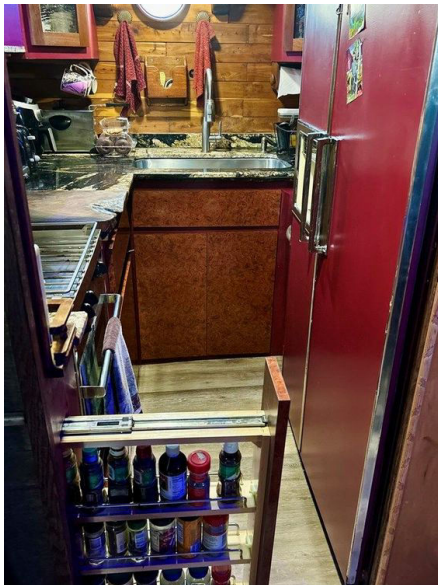


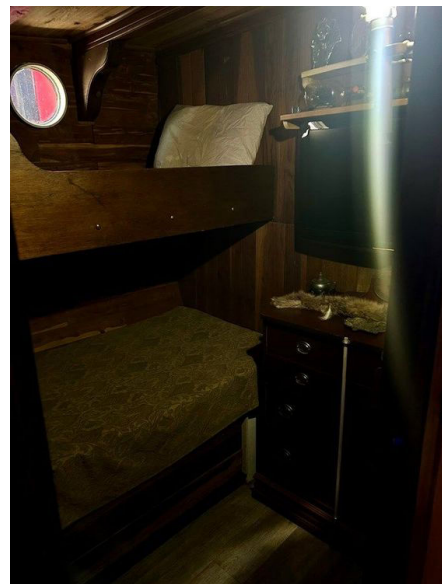


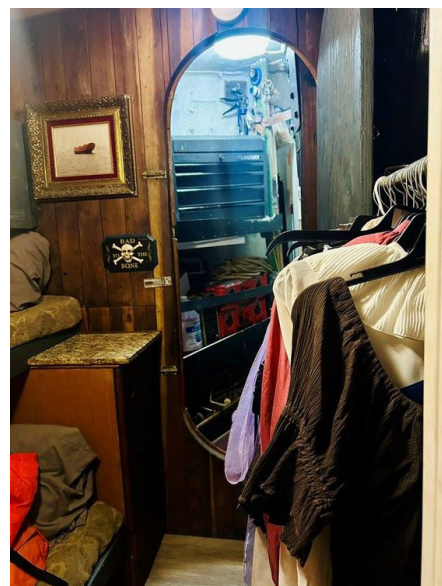
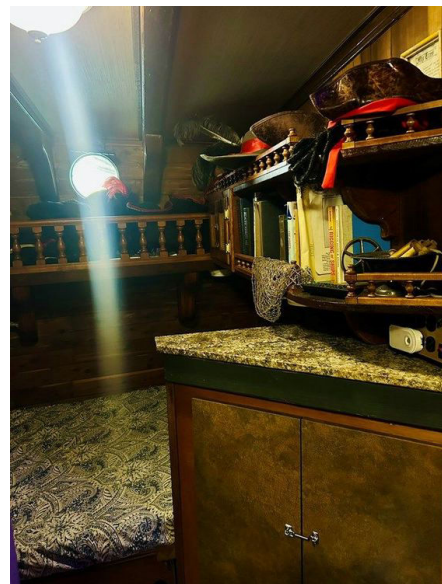
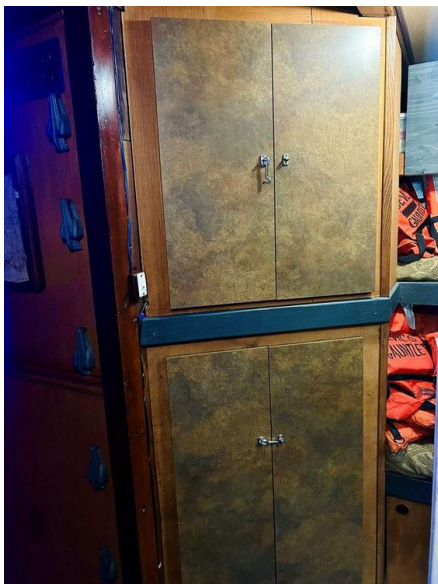
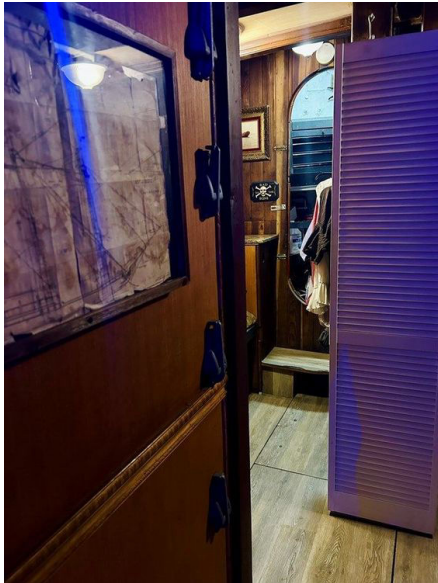


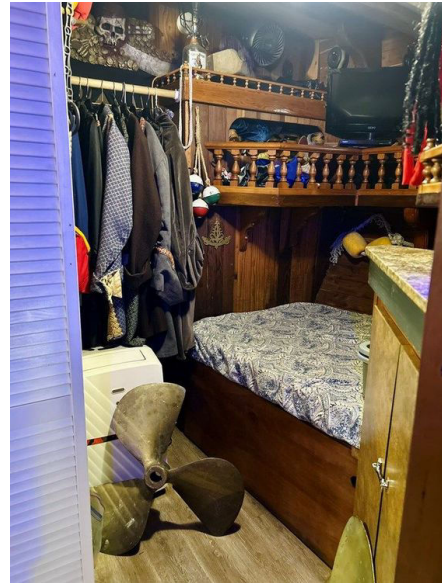














DETAILED DESCRIPTION

Disclaimer

The Company presents the particulars of this vessel in good faith, yet makes no guarantee or warranty regarding the accuracy of the information and offers no warranty as to the vessel's condition. Prospective buyers are encouraged to engage their own agents or surveyors to examine any particulars they wish to have verified. This vessel is offered subject to prior sale, price adjustment, or withdrawal from the market without notice.

Отказ от ответственности

Компания предоставляет сведения об этом судне добросовестно, однако не гарантирует и не ручается за точность указанной информации и не дает никаких гарантий относительно состояния судна. Потенциальным покупателям рекомендуется поручить своим представителям или сюрвейерам проверить любые данные, которые они желают подтвердить. Предложение по данному судну действует с оговоркой о возможной предварительной продаже, изменении цены или снятии с продажи без предварительного уведомления.

CONTACTS

Shestakov Yacht Sales is a brokerage company specializing in the sale and service of yachts worldwide. The company offers services for buying and selling both new and used motor yachts, sailing vessels, and luxury superyachts. They also provide yacht registration, insurance, technical maintenance, crew selection, and charter organization services across the U.S., Canada, Latin America, the Caribbean, and the Bahamas.

The founder and lead broker of the company is Andrey Shestakov, a licensed and certified expert with extensive experience in marine engineering and shipbuilding.

The company has an extensive network of partnerships with major yacht manufacturers worldwide and provides services in multiple languages, including Russian, Ukrainian, Spanish, and English. The office is in Dania Beach, Florida, USA.

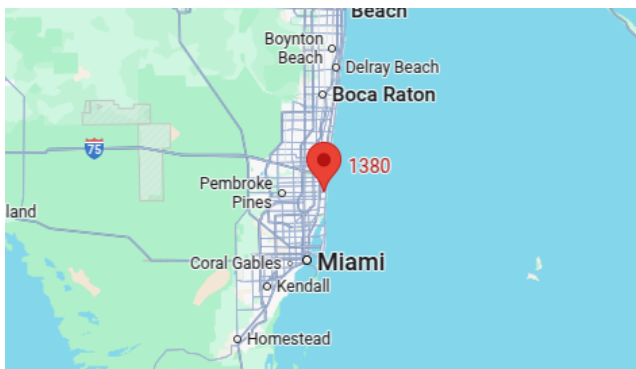
For more information and to view available yachts, you can visit the company's official website: <https://shestakovyachtsales.com>

Contact details

Phone: +1(954)274-4435

Email: andrey@shestakovyachtsales.com

Address



1380 Weeping Willow Way, Hollywood,
Florida 33019