

LONG ISLAND - JFA



Builder: [JFA](#)

Beam: 39' 0" (11.94 m)

Year Built: 2028

Max Draft: 24' 1" (7.33 m)

Model: Long Island 87

Price: \$14,687,558.77 USD Subject to change.

[See full listing on our website](#)

Location: Concarneau, France

LOA: 87' 0" (26.52 m)

TABLE OF CONTENTS

OVERVIEW 3

SPECIFICATIONS 4

 Basic Information 4

 Dimensions 4

 Accommodations 4

 Hull and Deck Information 5

 Engine Information 5

GALLERY 6

DETAILED DESCRIPTION 9

CONTACTS 12

OVERVIEW

The Long Island 87' is the culmination of fifteen years of partnership between JFA Yachts and Marc Lombard Yacht Design Group, drawing upon over three decades of know-how in conceiving and building substantial cruising multihulls destined for long-range passages.

This model is conceived with focus on durability, performance, and dependability, benefitting from JFA's mastery of aluminum and composite construction, cabinetry, onboard systems, and superyacht finish. With a meticulously optimized lightweight platform, this luxury sailing catamaran runs efficiently under sail and power, even when seas build.

The Long Island 87' carries roughly 30% less displacement than comparable yachts, delivering higher average speeds with lower fuel burn. Its engineering prioritizes safety, comfort, and long-range self-sufficiency, making this performance cruising multihull a bluewater yacht for passages.

SPECIFICATIONS

Basic Information

Model Year:
2028

Country:
France

Year Built:
2028

Dimensions

LOA:
87' 0" (26.52 m)

Max Draft:
24' 1" (7.33 m)

Beam:
39' 0" (11.94 m)

Accommodations

Total Heads:
4

Crew Berths:
4

Crew Cabin:
2

Hull and Deck Information

Hull Material:
Aluminum Yachts

Hull Designer:
N/A

Deck Material:
Aluminum

Interior Designer:
N/A

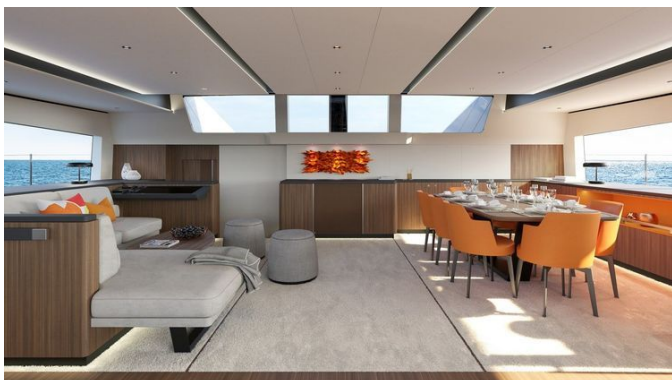
Hull Configuration:
N/A

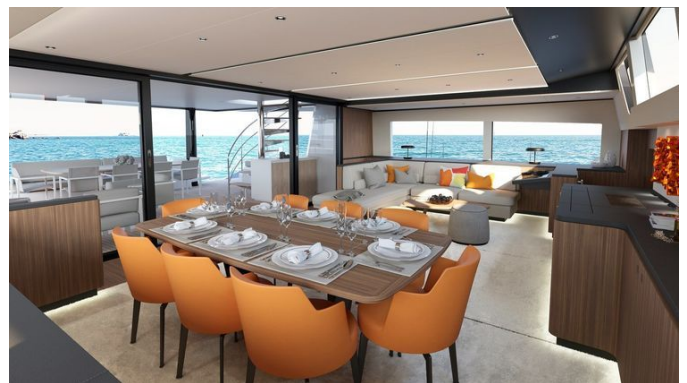
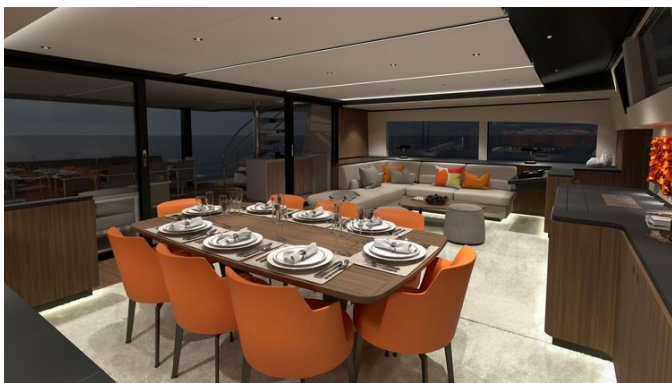
Engine Information

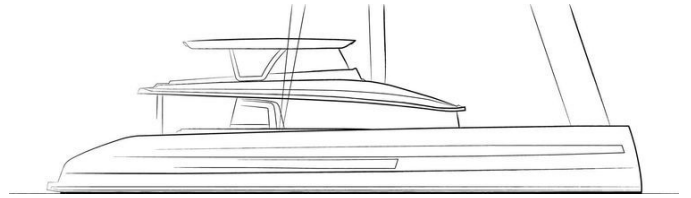
Engines:
2

Manufacturer:
Yanmar

GALLERY







DETAILED DESCRIPTION

Disclaimer

The company presents the details of this vessel in good faith but does not guarantee or warrant the accuracy of the information, nor does it warrant the vessel's condition. Prospective buyers are advised to instruct their agents or surveyors to investigate any particulars they wish to have validated. This vessel is offered subject to prior sale, price change, or withdrawal without notice.

Additional details

Main specs showcase an LOA of 27,17 m, an LWL of 25,98 m, a beam of 11,93 m, a draught of 2,24 m, an air draft of 39,20 m, and a light displacement of 60 T. Built with an aluminum hull and glass-epoxy infusion composite, she is finished in Awlgrip white paint across hull and superstructure. She is MCA MGN280 compliant (Load Line <24 m), and the flag is undefined. Inside, the interior joinery style is modern, an alliance of light and dark woods, with owner and guest capacity for six to eight persons and crew capacity for four persons. Her rig package features a Lorima carbon fiber mast and Park Avenue boom spar with dimensions of I = 29,8 m, J = 10 m, P = 30,6 m, and E = 9,3 m. Standing rigging is Navtec Kevlar & rod rigging, running rigging is Spectra and Dyneema rope, and the sail plan comprises a main sail of 200 M², a genoa of 170 M², a staysail of 86 M², and a gennaker of 285 M², all managed by two Harken hydraulic furlers. Propulsion is delivered by two Yanmar 6LY3 – 380 hp main engines spinning two Variford 28" propellers, supported by two Onan 23 kW 60 Hz generators. Tankage includes fuel at two x 1.900 litres, water at two x 1.500 litres, and a grey & black water tank of 600 L plus a SEAWAGE TREATMENT PLANT. The electrical system is 230V 60 Hz with service battery

banks of 1.200 Ah for the 24 VDC power supply.

Maneuvering is assured by one hydraulic retractable R300 bowthruster and a Lecomble & Schmidt hydraulic steering system. For autonomy at sea, two SeaRecovery watermakers provide a capacity of 110 L/h each. Safety is enhanced with a saltwater fire fighting system, portable fire extinguishers, and a Novec firesystem in the engine room. Hydraulic services are powered by a 24V hydraulic power pack for winches and furlers, complemented by one PTO on the genset. Climate control comes via a Frigomar fancoil system with flow-through heater and chiller. As specified, the electrical system is 230V 60 Hz with service battery banks of 1.200 Ah for the 24 VDC power supply.

Navigation is by Raymarine, including GPS, multifunction repeaters & sensors, radar, and autopilot; communications feature Raymarine (VHF, AIS), SeaTel, and Iridium. Entertainment is catered to with Bose audio, Apple TV, and LG screens. On deck, a 6 mm teak deck in the cockpit sets the tone, with Harken deck hardware and Harken winches, Lewmar hatches, and an anchor system comprising a Lewmar hydraulic windlass and Delta type anchor. A manual and folding passerelle streamlines boarding. A 16' tender up to 600KG is carried, launched and retrieved via a TOPING lift halyard + telescopic pole in boom.

Interior height measurements

Generous headroom enhances every living space on board: the salon offers a height of 2.10 m (6.89 ft). The master cabin provides 2.03 m (6.6 ft) of clearance with a bed measuring 2.00 m in length by 1.90 m in width. The aft guest cabins feature 1.95 m (6.3 ft) of headroom with beds sized 2.00 m by 1.65 m. The portside child cabin affords 1.98 m (6.4 ft) of height with a 2.00 m by 0.80 m berth. The starboard side captain cabin offers 2.02 m (6.6 ft) of height with a 2.00 m by 1.40 m bed, and the starboard side crew cabin provides 2.02 m of height with a 2.03 m by 0.85 m berth.

About

The Long Island 87' is the refined result of fifteen years of collaboration between JFA Yachts and Marc Lombard Yacht Design Group, drawing on more than three decades of experience designing and constructing large cruising multihulls for long-range voyaging. Built with a resolute focus on durability, performance, and reliability, it leverages JFA's expertise in aluminum and composite construction, cabinetry, technical systems, and finishing. A carefully managed lightweight structure ensures efficient sailing and motoring, maintaining composure and speed even in rough conditions. With a displacement approximately thirty percent lower than comparable models, it achieves higher average speeds and reduced fuel consumption, while engineering that prioritizes safety, comfort, and long-range autonomy makes it well suited to extended bluewater cruising.

CONTACTS

Shestakov Yacht Sales is a brokerage company specializing in the sale and service of yachts worldwide. The company offers services for buying and selling both new and used motor yachts, sailing vessels, and luxury superyachts. They also provide yacht registration, insurance, technical maintenance, crew selection, and charter organization services across the U.S., Canada, Latin America, the Caribbean, and the Bahamas.

The founder and lead broker of the company is Andrey Shestakov, a licensed and certified expert with extensive experience in marine engineering and shipbuilding.

The company has an extensive network of partnerships with major yacht manufacturers worldwide and provides services in multiple languages, including Russian, Ukrainian, Spanish, and English. The office is in Dania Beach, Florida, USA.

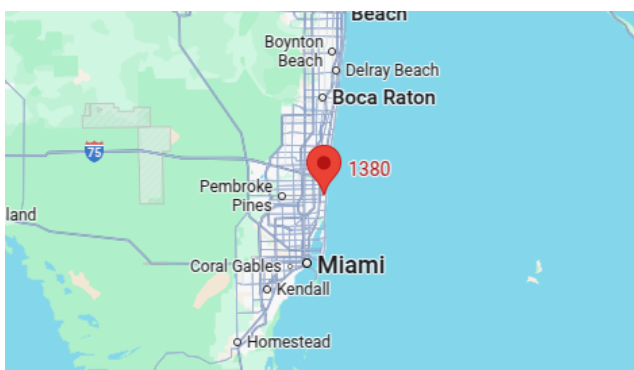
For more information and to view available yachts, you can visit the company's official website: <https://shestakovyachtsales.com>

Contact details

Phone: +1(954)274-4435

Email: andrey@shestakovyachtsales.com

Address



1380 Weeping Willow Way, Hollywood,
Florida 33019