



MILLENNIUM Raised Pilothouse Yacht – Running On The Waves

Make:	MILLENNIUM	Boat Name:	Running On The Waves
Model:	Raised Pilothouse Yacht	Hull Material:	Fiberglass
Length:	118 ft	Number of Engines:	2
Price:	\$ 2,700,000	Fuel Type:	Diesel
Year:	2003	Number:	4903683
Condition:	Used		
Location:	Ft. Lauderdale, FL, United States		

Running On The Waves

The 2003 Millennium 118' is designed by Frank Mulder, the well-known international naval architect. The yacht's stylish and elegant lines are a reflection of the best in marine engineering. There are four staterooms that sleep a total of nine guests. "Running On The Waves" has a split-level on-deck Master, plus a full-beam VIP below along

with two additional guest staterooms. The Master is on the main deck with a king bed and separate large dressing area and closets. The master bath with Jacuzzi is forward and below. Silk brocade curtains can be lowered at a touch of the button highlighting the large Plasma TV which faces the bed. Aft and below deck is the VIP Stateroom which has a queen-size bed. There is a walk-in closet and ensuite bath featuring a glass enclosed shower. There are two additional guest staterooms, one has queen-size bed , the other a full bed plus one single bed so it can sleep three. There is plenty of entertainment aboard ranging from a high-end home theatre system on the main deck to an assortment of water toys in the garage including two jet-skis, one tender, two sea-bobs. The full-beam salon is divided by an aft seating area which has a convertible cocktail table that transforms into a formal dining table at the push of a button. Forward is a drop down movie screen with plenty of comfortable seating. This stylish and contemporary yacht has a Jacuzzi, full bar and plenty of sunning areas for guests to relax.

Measurements

Cruising Speed:	16 kn	Displacement:	200000
Max Speed:	18 kn		kg
LOA:	118 ft	Fuel Tanks Capacity:	7200
Beam:	24 ft 9 in		gal
Min. Draft:	7 ft	Fresh Water Tanks Capacity:	1550
			gal
		Number of Cabins:	4

Propulsion

Engine #1

Engine Make: MTU Hours: unknown
Engine Model: 2000 Series Power: unknown
Primary Engines: Inboard

Engine #2

Engine Make: MTU Hours: unknown
Engine Model: 2000 Series Power: unknown
Primary Engines: Inboard

Accommodations

There are four staterooms that sleep a total of nine guests. The Master is on the main deck with a king bed and separate large dressing area and closets. The master bath with Jacuzzi is forward and below. Silk brocade curtains can be lowered at a touch of the button highlighting the large Plasma TV which faces the bed. Aft and below deck is the VIP Stateroom which has a queen-size bed. There is a walk-in closet and ensuite bath featuring a glass enclosed shower.

There are two additional guest staterooms, one has a queen-size bed , the other a full bed plus one single bed so it can sleep three.

Interior

The interior concepts, which offer the ultimate in luxury and comfort, have been designed by Evan Marshall. The [2003 Millennium 118'](#) encompasses four staterooms including a split-level master room with adequate dressing facilities and a whirlpool tub. The semi-raised pilothouse allows for a large fly bridge and a swimming platform. Evan Marshall has termed the interior, "a reflection of the new millennium as the design is an ideal blend of the classic and the modern. A fusion of several themes, the interior manages to capture the essence of the classical and merge it with the modern to create a picture of elegant functionality." He adds that, "The design has also been carefully selected to allow for customer preferences and leaves ample room for customization in accordance with individual preferences."

Salon

- Cuved double doors, stainless steel framed, auto controlled from aft deck entrance area
- Full width salon all the way to just forward of amidships
- Port and starboard doors to side decks going forward
- Granite flooring in the entry
- Custom Cuved Couches (2)
- Custom Barrel Chairs (2)
- Oval coffee table
- Burl wood crystal cabinet
- Silk Damask Curtains with Decorator tie backs
- Overhead mirror accents with Fiber Optic Lighted crystals
- Entertainment center
- Acoustics stereo speakers
- Custom Burl wood window surrounds and furniture work
- Under window lockers
- Burl wood soffits
- Burl wood window pillars with accent lights
- Custom carpet

Wet Bar

- Granite counter
- Sink
- Custom bar stools
- Refridgerator
- Ice maker
- Storage drawers (3)

- Custom crystal cabinet
- Microwave
- Ice Machine

Dining

- Mirrored overhead accents with Fiber Optic lighted crystals
- Storage cabinets

Galley

- | | |
|---|---|
| • Generous granite counter space | • Convection microwave |
| • (2) Refrigeration units with vegetable compartments | • Stainless steel sink with drain board |
| • Oven | • Dishwasher |
| • Cooktop 4-burner | • Garbage compactor |
| | • Garbage disposal |

Master Stateroom

- | | |
|---|---|
| • King size bed | • Settee with accent pillows and furnishings |
| • Overhead mirror with Fiber Optic lighted crystals | • End table lamps |
| • Silk brocade curtains | • Storage cabinets, port and starboard |
| • Remote controlled blinds | • Electronic system: AV tuner/receiver, stereo, DVD/CD player, acoustics speakers |
| • Rotunda with 33" Plasma TV | |
| • (2) Bedside tables with 2 drawers each | |

Master Bath (Split Level)

- | | |
|---|--|
| • 5-steps to lower bath suite forward of master bed | • Dressing Suite: |
| • His/her sinks port and starboard | • Vanity table with stool and lighted mirror |
| • Gold bath faucets | • Dressing table with drawers |
| • Trompe l'oeil pillar accents | |

- Jacuzzi tub with mirrored back wall
- Linen storage cabinets (2)
- Marble flooring and countertops
- Glass shower with mirrored overhead Swarovski crystals
- Burl wood finished walls
- (2) Full-length dressing cabinet's with mirrored doors
- Closets
- Owner's safe

Lower Deck Passageway

- Entrance from starboard staircase amidship
- Burl wood finish spiral staircase
- Linen locker
- Laundry service in lower foyer

VIP Stateroom

- Queen size bed with padded headboard and under bed storage
- Dressing table with custom stool, vanity mirror, 5 drawers
- Walk-in closet with Burl wood finish
- Sony satellite receiver
- Stereo/ CD player
- Acoustic speakers
- Television with remote control

VIP Head/Bath

- Marble flooring and countertops
- Burl wood walls
- Medicine/storage cabinets
- Under counter storage lockers
- Glass enclosed shower with teak grate floor

Guest Stateroom

- Queen size bed with padded headboard and storage beneath
- Bed side tables
- Guest Bath:
- Glass enclosed shower with teak grate floor

- Dresser with three drawers
- Silk brocade curtains
- Entertainment center with storage locker
- Television
- Stereo with Acoustics speakers
- Marble flooring and countertops
- Large medicine cabinet
- Sink
- Full length mirror on door

Guest Stateroom 2

- Double beds with under bed storage
- Fold down additional bed
- Dresser
- Closet with drawers
- Bedside table
- Television
- Stereowith Acoustics speakers
- CD Player
- Guest Bath:
- Glass enclosed shower with teak grating
- Marble counter tops
- Medicine cabinet

Crew Quarters

Three cabins with full heads

Electronics and Navigational Equipment

- Custom built ships navigation computer
- ICOM VHF radios - crew
- Nera Mini M SAT phone - Voice, Fax, Data
- INMARSAT C SAT printer
- Sailor INMARSAT c screen and keyboard - GMDSS
- C-Plath/Sperry Gyro, autopilot with navigation mode screen & keyboard
- Display screen for Praxis monitoring
- Computer processor unit for Praxis monitoring system
- Wind direction indicator
- HP photo smart scan, print, copy machines (2)
- Sailor VHF TX/RX handset type C4901
- Panasonic phone
- Sony CD player
- Hughes SAT receiver
- Channel vision modulators (2)
- Marine Air, air handlers for main wheelhouse (2)
- Elbex CCTV controller

- Furuno color depth sounder (FCV 582L)
- Furuno 3CM starboard radar screen ARPA & ECTIS
- Furuno 3CM port radar screen with ARPA mimics to flybridge station
- Plastimo magnetic compass, 6"
- Gyro compass controlled steering with GPS
- Koopnautic stabilizer control panel
- Matrix keyboard for screen control
- SRH Navtex
- Leica MK12D/GPS (2)
- B&G hydra 2000 monitors (2)
- MTU analogue rpm gauge
- MTU port & starboard engine throttles
- Computerized MTU monitor screen & keypad, port & starboard
- Nobletec navigation chart system
- Navigation light control panel
- Koopnautic bow thruster controller
- Window wiper controls
- Electric searchlight controllers
- Muir anchor windlass controllers
- SeaTel Tac 92 controllers

Fly Bridge

- Helm station
- Jacuzzi
- BBQ grill
- Dining tables (2)
- Sun bathing area with pads
- Radar arch
- Bar with drink fridge and ice machine
- Access to upper deck from aft deck stairway

Flybridge Helm

- B&G Hydra 2000 monitor
- MTU analogue rpm gauge
- MTU stop/start alarm station, port & starboard
- Furuno Navnet chart plotter/depth sounder/ radar combo unit with keyboard and mouse
- Flybridge volume speaker control
- Koopnautic stabilizer control
- Koopnautic proportional bow thruster control
- Raytheon Ray 430 loudhailer & microphone
- C-plath/ Sperry gyro repeater
- C-plath/ Sperry autopilot, hand steering, take over key pad

- VHF, WIFI, GPS, Radar, Min M antennas
- Kahlenberg horns
- Sailor C4951 handset
- 40" SeaTel antenna
- Electric loud hailer horn
- Analogue rudder indicator
- MTU throttle / gear levers

Wing Stations

- MTU throttle gear levers, port & starboard
- Koopnautic proportional side master bow thruster control
- C-Plath / Sperry take-over mini wheel
- Horn switch
- Analog rudder indicator guage

Aft deck

- Varnished laminated dining table and chairs
- Deck cushions and covers for all exterior areas
- ABS approved safety equipment - EPIRB / Life rings / Flare kits
- Helm Station
- Ice machine
- Drink fridge

Deck Equipment

- Bosun locker equipment
- Muir VRC6000 3-phase electric vertical winches
- (2) Anchors
- (2) Anchor chains
- Electric / hydraulic crane for tenders and jet skis
- Tide rise boarding ladder
- (2) 16 - Person RFD Seafarer inflatable life rafts
- Zodiac jet driver tender to Les Belles

Lazarette

- Full-transom hydraulically-operated garage that becomes a swim platform when open
- (2) Glendinning shore power electric cords
- Domestic deep freeze
- Passerelle with boarding ladder
- (2) Yamaha Jet skis GP1200R
- Scuba equipment, air compressor
- Zodiac jet drive tender
- Underwater lights
- Bauer Junior II dive compressor

Engine /Mechanical Equipment

- (2) 2000 Series DDEC MTU Diesel main engines with ZF gearboxes
- 24-ton Marine Air systems air conditioning compressors
- Bilge pumps
- Fire pump manifold system
- Sewage treatment plant
- Koopnautic, hydraulic pack controller station for all hydraulics on the vessel
- Fuel transfer system
- Headhunter toilet system
- (2) Kohler 65kW 30phase 208v 60 Hz diesel generators (P=5750 hours, S=800 hours)
- Engine room cameras
- Fully automated electrical changeover
- Automated, computerized Praxis ships monitoring system
- Atlas Power converter / frequency drive unit & smart box
- Miscellaneous hardware and spare parts for the entire boat
- Refrigeration compressor for flybridge fridge/ freezer units
- Engine room emergency shut down controls and alarms

Features

[2003 Millennium 118'](#) has a split-level on-deck Master, plus a full-beam VIP below along with two additional guest staterooms. There is plenty of entertainment aboard ranging from a high-end home theatre system on the main deck to an assortment of water toys in the garage. The full-beam salon is divided by an aft seating area which has a convertible cocktail table that transforms into a formal dining table at the push of a button. Forward is a drop down movie screen with plenty of comfortable seating. This stylish and contemporary yacht has a Jacuzzi, full bar and plenty of sunning areas for guests to relax.

Exclusions

Exclusions include all of Owner's personal effects.
Exclusion list of art work and other items available upon request.

Comments

"Not for sale to U.S. Residents while in U.S. waters."

Disclaimer

The Company offers the details of this vessel in good faith but cannot guarantee or warrant the accuracy of this information nor warrant the condition of the vessel. A buyer should instruct his agents, or his surveyors, to investigate such details as the buyer desires validated. This vessel is offered subject to prior sale, price change, or withdrawal without notice.

Photos



118 MILLENNIUM SUPER YACHT



118 MILLENNIUM SUPER YACHT



118 MILLENNIUM SUPER YACHT



118 MILLENNIUM SUPER YACHT



118 MILLENNIUM SUPER YACHT



118 MILLENNIUM SUPER YACHT



118 MILLENNIUM SUPER YACHT



118 MILLENNIUM SUPER YACHT



118 MILLENNIUM SUPER YACHT



118 MILLENNIUM SUPER YACHT



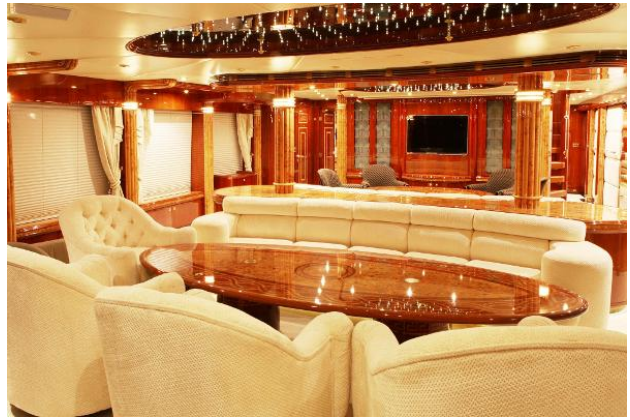
118 MILLENNIUM SUPER YACHT



118 MILLENNIUM SUPER YACHT



118 MILLENNIUM SUPER YACHT



118 MILLENNIUM SUPER YACHT



118 MILLENNIUM SUPER YACHT



118 MILLENNIUM SUPER YACHT



118 MILLENNIUM SUPER YACHT



118 MILLENNIUM SUPER YACHT



118 MILLENNIUM SUPER YACHT



118 MILLENNIUM SUPER YACHT



118 MILLENNIUM SUPER YACHT



118 MILLENNIUM SUPER YACHT



118 MILLENNIUM SUPER YACHT



118 MILLENNIUM SUPER YACHT



118 MILLENNIUM SUPER YACHT



118 MILLENNIUM SUPER YACHT



118 MILLENNIUM SUPER YACHT



118 MILLENNIUM SUPER YACHT



118 MILLENNIUM SUPER YACHT



118 MILLENNIUM SUPER YACHT



118 MILLENNIUM SUPER YACHT



118 MILLENNIUM SUPER YACHT



118 MILLENNIUM SUPER YACHT



118 MILLENNIUM SUPER YACHT



118 MILLENNIUM SUPER YACHT



118 MILLENNIUM SUPER YACHT



118 MILLENNIUM SUPER YACHT



118 MILLENNIUM SUPER YACHT



118 MILLENNIUM SUPER YACHT



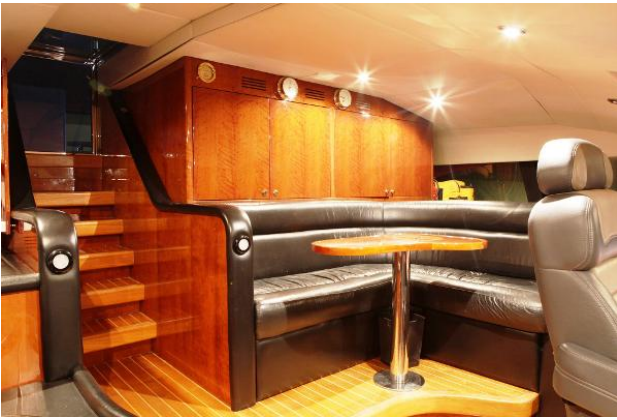
118 MILLENNIUM SUPER YACHT



118 MILLENNIUM SUPER YACHT



118 MILLENNIUM SUPER YACHT



118 MILLENNIUM SUPER YACHT



118 MILLENNIUM SUPER YACHT