



Sunseeker Manhattan 74 Flybridge Motor Yacht

Make:	Sunseeker	Hull Material:	Fiberglass
Model:	Manhattan 74 Flybridge Motor Yacht	Draft:	4 ft 11 in
Length:	74 ft	Number of Engines:	2
Price:	\$ 1,090,000	Fuel Type:	Diesel
Year:	2002	Number:	3817726
Condition:	Used		
Location:	Miami, FL, United States		

Description

This example of the Sunseeker Manhattan 74 Flybridge Motor Yacht model, was voted as one of the top five Best Designed Super Yachts in the world, is luxuriously equipped and exceptionally spacious 4 cabin layout serving 8 guests with 2 crew.

Measurements

Cruising Speed:	23 kn	Displacement:	81600 lb
Max Speed:	34 kn	Number of Cabins:	4
LOA:	74 ft	Number of Heads:	3
Beam:	17 ft 10 in		
Max Draft:	4 ft 11 in		

Propulsion

Number of Engines:	2	Total Power:	1300 hp
Engine Make:	Twin MAN		
Engine Model:	LE406V12		

Accommodations

There are 4 guest staterooms (Master, VIP and Port & Starboard) and 3 guest heads. There is a crew cabin aft with 2 berths and a head and shower.

Master Stateroom

The master stateroom is midship and privately accessed through the salon. It has a king bed, a settee and vanity, built-in drawer storage, and a large cedar-lined closet with mirrored doors. There are opening ports with screens and curtains, as well as overhead and reading lighting. This suite has its own head with shower, Bathtub with Jacuzzi jets.

- Large hanging closet
- TV Flat screen Samsung
- Queen berth with storage below
- Accent puck lighting throughout
- Roman room darkening privacy shades
- Twin cherry nightstands with drawer storage
- Desk/makeup vanity with generous cabinet storage
- Built in entertainment center with TV, DVD, CD. etc and storage

VIP Stateroom

Completely forward is a VIP stateroom with a queen bed, built-in drawer storage, overhead lockers, wardrobes with mirrored doors, and opening port lights with screens and curtains. 24 volt lighting is provided in the form of overhead treatment and reading lamps. The ensuite head

has a shower with acrylic door and teak grating, and wash basin. A TV/VCR/CD player is also included.

- Reading lights
- Full wardrobe closet
- TV Flat screen Sharp Aquos
- Queen berth with storage below
- Additional built in drawer and cabinet storage
- Built in entertainment center with TV, DVD, CD. etc and storage

Port & Starboard Guest Staterooms

Two-bedded starboard stateroom have built-in drawer storage, a wardrobe and bedside table. One-bed Port stateroom have built-in drawer storage, a wardrobe and office side table. Opening port lights have screens and curtains. They are equipped with 24 volt overhead and reading lighting and a TV/VCR/CD player combo. These staterooms share a head with shower and wash basin.

- Reading lights
- Full wardrobe closet
- TV Flat screen Sharp Aquos
- Built in entertainment center with TV, DVD, CD. etc and storage

Crew Cabin

The privately accessed crew cabin aft is equipped with (2) twin sized berths, a hanging locker, a mirrored vanity unit and a head with shower and wash basin. Overhead and reading lighting, air conditioning, opening port light with screen, TV/VCR are also provided.

- Reading lights
- Full wardrobe closet
- Washer & Dryer Miele Novotronic W1818 & T 1520
- Built in entertainment center with TV, DVD, CD. etc and storage

Main Salon

The main salon is very spacious and comfortably appointed with mirror image settees, built-in cabinetry, a full entertainment system and large side windows with window treatments. Aft is access to the aft deck through a sliding door and at the forward end of the salon is the raised galley and dining area. This arrangement never takes the cook away from the action and it is of true benefit for large parties.

- Climate controls

- TV Flat screen Samsung
- Stairwell up to flybridge
- Bose Sound speaker system
- Valences with darkening shades
- Lower aft seating area opposite galley
- Built in chart table forward and to port
- Port side table with entertainment center built-in
- New carpeting throughout as well as in staterooms
- Centerline companionway down to guest staterooms
- Stairwell access to separate and private owner's suite
- Helm forward and to starboard with electric side deck access door
- Upper saloon featuring 2 dining areas with tables and built in storage below

Galley

The galley is very nicely appointed with an attractive combination of avonite and wood and offers the following equipment:

- Accent lighting
- Frigidaire dishwasher
- Sharp convection oven
- Generous cabinet storage
- Glassware storage cabinet
- Subzero fridge and freezer
- Ceram 4 burner Glass top stove
- Dual SS sinks with granite inserts
- Granite wrap-around counter and floor

Deck and Flybridge

The sundeck features a second full helm station, multiple seating areas, sun pad/lounge areas, custom navy blue canvas bimini top, sink, and refrigerator. You also have easy access from the exterior aft main deck. Both access points have protective hatches great for children safety or that of the guests when underway

- Electric windlass
- Teak steps to flybridge
- Anchor with chain rode

- Hot and cold shower aft
- Bow sunbathing cushions
- Fresh water dockside inlet
- Side rope lockers in aft deck
- Radar Arch with accent lighting
- Sunpad on flybridge and forepeak
- Stainless steel rail and stanchions
- Gaggenau grill, sink, and fridge on FB
- Dining table with wraparound seating on FB
- Flybridge, side decks and cockpit teak decking
- Glendinning shore power cord retrieval system
- Fresh water deck washdown forward and aft with hose kit
- Aft-deck teak dining table with chairs and built in transom seating

Electronics and Upper Helm

- Compass
- VHF Radio
- 12V outlet
- Bow thruster control
- Seafire system indicator
- Raymarine Autopilot/GPS
- Sony sound system control
- Electronic engine controls
- Remote spotlight controller
- Raytheon ST60 depth sounder
- Full instrumentation and warning system

Electronics and Lower Helm

- Compass
- VHF Radio
- 12V outlet
- Bow thruster control

- Seafire system indicator
- Raymarine Autopilot/GPS
- Sony sound system control
- Electronic engine controls
- Remote spotlight controller
- Raytheon ST60 depth sounder
- Full instrumentation and warning system

Electrical

- Galvanic Isolator
- Electric water heater
- Central vacuuming system
- Low level lighting on flybridge
- Glendinning power cable retractor
- Reverse cycle air conditioning throughout
- 2 Generators Kohler Marine 19 EFOZ 20KW
- 110v electrical system with circuit breakers
- ASEA Power converter model AC12 120/240
- Dimmer switched interior lighting throughout
- 24v and 12V electrical systems with circuit breakers
- Dedicated battery banks for engine start, house, and genset start
- Automatic battery chargers for 12v and 24v circuits PT-40CE and PT 24-95F

Engine and Mechanical Equipment

- Galvanic Isolator
- Electric water heater
- Central vacuuming system
- Low level lighting on flybridge
- Glendinning power cable retractor
- Reverse cycle air conditioning throughout
- 2 Generators Kohler Marine 19 EFOZ 20KW
- 110v electrical system with circuit breakers
- ASEA Power converter model AC12 120/240

- Dimmer switched interior lighting throughout
- 24v and 12V electrical systems with circuit breakers
- Dedicated battery banks for engine start, house, and genset start
- Automatic battery chargers for 12v and 24v circuits PT-40CE and PT 24-95F

Exclusions

Owner's personal belongings. Owner's personal toys, including but not limited jet-skis, tenders, Sea Bobs, fishing & diving equipment.

Disclaimer

The Company offers the details of this vessel in good faith but cannot guarantee or warrant the accuracy of this information nor warrant the condition of the vessel. A buyer should instruct his agents, or his surveyors, to investigate such details as the buyer desires validated. This vessel is offered subject to prior sale, price change, or withdrawal without notice.

Photos



Salon



Salon



Salon



Salon



Salon



Salon



Salon



Salon



Salon



Salon



Salon



Salon



Galley



Galley



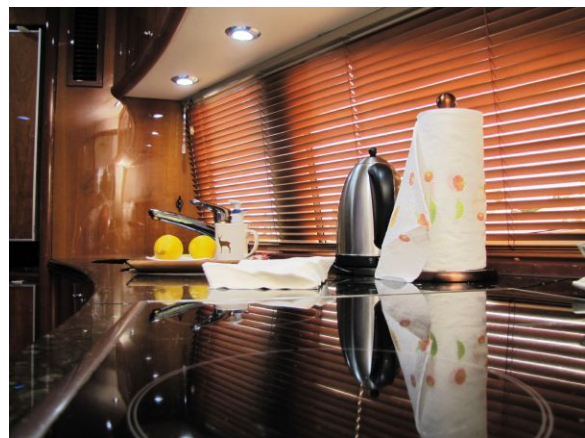
Galley



Galley



Galley



Galley



Galley



Lower Helm



Lower Helm



Lower Helm



Upper Helm



Upper Helm



Sun Deck



Sun Deck



Bridge Radar Arch



Sun Deck Table



Exit Stairs



Grill-Sink- Fridge



Stairs to Sun Deck



Stairs to Sun Deck



Cockpit Seating



Cockpit Table



Walk-Around Decks



Walk-Around Decks



Foredeck



Foredeck



Master Stateroom



Master Stateroom



Master Stateroom



Master Stateroom



Master Stateroom



VIP Stateroom



VIP Stateroom



VIP Stateroom



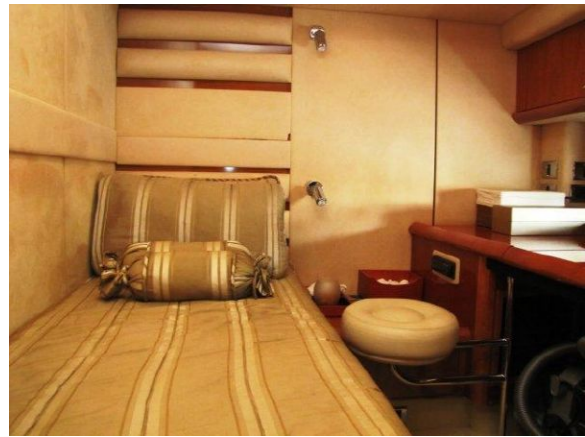
VIP Stateroom



Starboard Guest Stateroom



Starboard Guest Stateroom



Port Guest Stateroom



Port Guest Stateroom



Hallway



Hallway



Shower Sink



Shower



Shower



Shower



Shower



Jacuzzi



Electric Panel



MAN Engine



Profile