



Presents

ATLANTIC 115
built by HeySea

A stylized, horizontal wavy line graphic, resembling a wave or a ribbon, positioned below the text "built by HeySea".



Atlantic 115

(Created for East Coast US, Bahamas and Caribbean)

“In 2018 an exciting new concept is coming to American Yachting.”

Atlantic Yacht and Ship is involved with HeySea shipyard for the construction of the new and exciting Atlantic 115. This raised pilothouse design has been created by the renowned European designer, Jure Bukavec, expressly for American use from the keel up. The latest trends in yacht design look for maximum window sizes, Cabana/ Beach Club space aft, more beam, prop tunnels, zero speed stabilization, plenty of shade from the sun and as much sun as you want, all at the same time. American engineering goes into each Atlantic 115, and is made beautiful by the European Design. With 100,000 plus hours of construction in each yacht, the buyer gains value through Atlantic's management and Atlantic's use of Asian labor cost efficiency.

The Atlantic team that created and brought to the market the King Baby at 140 feet 2 years ago, then the Serenity at 133 feet last year, is the same team that joined forces to make the Atlantic 115 truly special to see, touch, and experience.

To create something new and special in yachting today is less about invention and more about truly understanding what people want, need, and expect when they buy a yacht. The long experience regarding tried and true features is what most of the buyers are seeking. During the design process, Joe Marino and Doug Hoogs met with many top captains who are knowledgeable about Private and Charter use in US waters and also into the Bahamas and Caribbean. We closely followed these captain's suggestions for each feature that would give the utmost luxury, comfort, and fun to the owner and guests while still offering a special large and open environment in the crew area.

Specifications for the Atlantic 115

LOA	115 feet
Beam	26 feet
Draft	5.8 feet
Speed	24 knots
Range	2,000+ n.m.
Fuel	5,280 gallons
Water	1,050 gallons
Intl Gross Tonnage	280 Tons
Displacement Tonnage	155 Tons
Class	RINA Commercial Charter
Flag	USCG or Cayman Islands MCA/ LY3
Sleeps	12 owner/guest, plus 6 crew, Cabana converts to bed
Systems:	All Americaon Brands plus the OpacMare Transformer
Engines:	CAT C32 1950 HP per engine
Generators:	Northern Lights 65 KW x 2
Electric:	Atlas shore power converter for worldwide use
Stabilizers :	American Bow Thruster (ZeroSpeed)
A/C:	Domestic Cruise Air
Toilets:	Headhunter
Thrusters:	American Bow Thruster (bow and stern)
Swim Pl.:	OpacMare hydraulic platform for Swim/ Passerelle/ Tender
Davit:	Nautical Structures

Atlantic 115 special features allow you to have it all!

- 20 knot cruise speed
- Shallow draft of 5 feet and 8 inches under the keel,
- Wide beam 26 feet.
- Tank tested and well engineered hull form.
- Spada bow adds extra comfort and fuel economy at every speed.
- CAT power C32, Northern Lights Generators, Dometic Air conditioning, HeadHunter toilets and MSD. (Just to name a few)
- 5 stateroom layout with the owner on the main deck. The Cabana aft easily converts to a 6th Stateroom.
- Owner on main deck forward offers 270 degrees of visibility plus a private terrace at the bow.
- Convertible VIP on the lower deck to function as the second owner's full beam stateroom.
- Country Kitchen version available upon request
- Cabana/Beach Club aft is a very versatile space for day or night
- OpacMare Transformer the hydraulic platform that is suitable for swimming, scuba diving, passerelle, and tender deployment.
- Large windows throughout the design, completely opens up the interior with natural light and more scenic views of the world around the yacht.
- Headroom is 8 feet in the main salon.
- No step ledges inside that may cause a person to trip.
- Large sliding doors in the salon to port, starboard, and aft.
- Sundeck powder room inside the mast design.
- Large Jacuzzi hot tub on the Sundeck and/or the Foredeck
- American Bow Thruster brand stabilizers are oversized for maximum comfort even at anchor with STAR.
- Bow and stern thruster by American Bow Thruster offer maximum maneuverability in the harbor.
- Skeg keel in between the prop tunnels is the deepest point below the stabilizers, props, and rudders in case you are navigating in a shallow channel or reef in the Bahamas.
- Range 2,000+ miles could keep the ship at sea for weeks at a time deep in the island chain.

For further information call Andrey Shestakov +1-954-274-4435

ATLANTIC 115
built by Heesen



UNIELLÉ
YACHTDESIGN

ATLANTIC 115
built by Heesen



UNIELLE
YACHTDESIGN





ATLANTIC 115
built by Heesen



UNIELLÉ
YACHTDESIGN

ATLANTIC 115
built by Hayfin



UNIELLÉ
YACHTDESIGN



ATLANTIC 115
built by Hayfin



UNIELLÉ
YACHTDESIGN

ATLANTIC 115
built by Hayfin



UNIELLÉ
YACHTDESIGN







ATLANTIC 115
built by Haysfield



UNIELLÉ
YACHTDESIGN



ATLANTIC 115
built by Hayfin



UNIELLÉ
YACHTDESIGN

























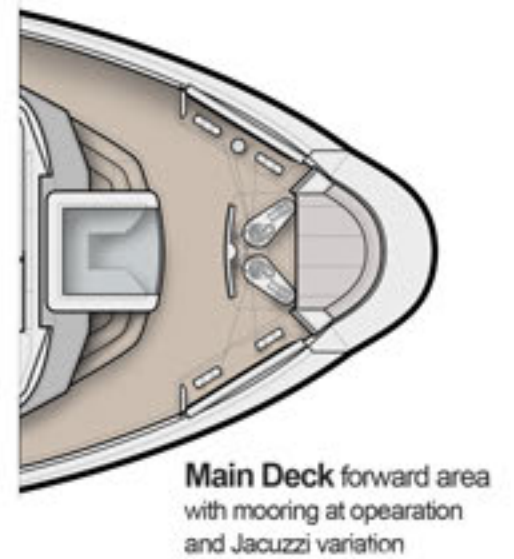
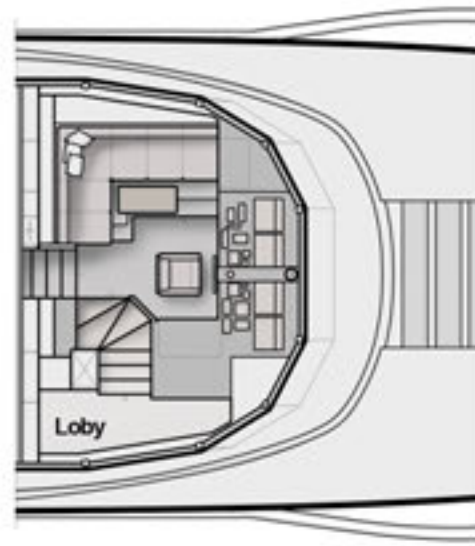
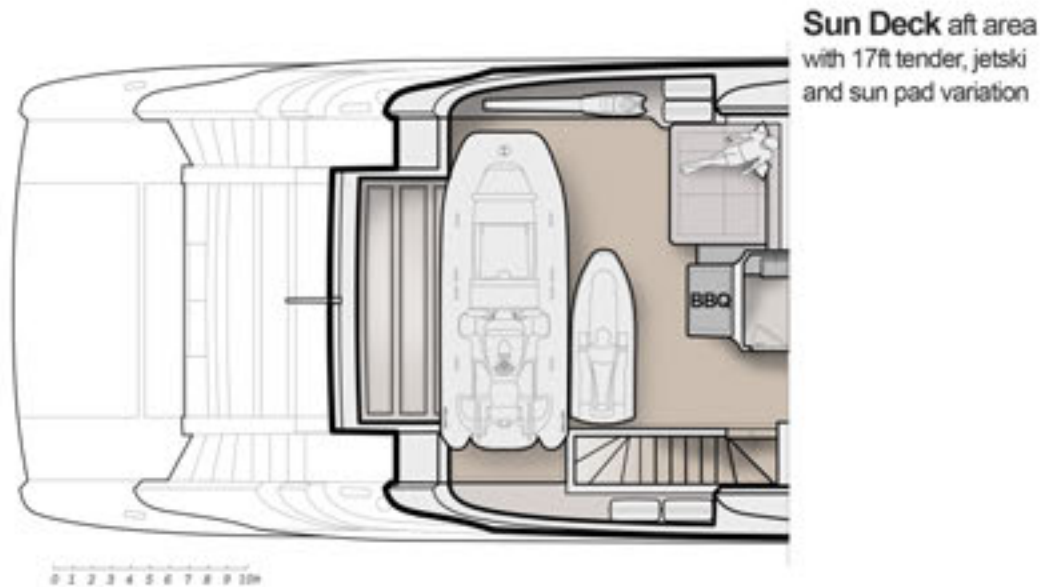
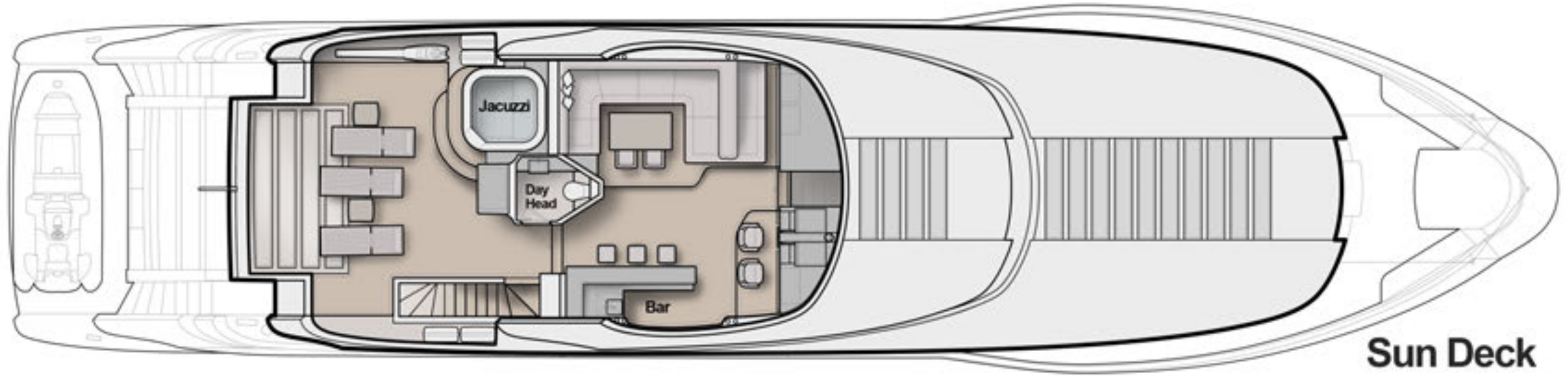


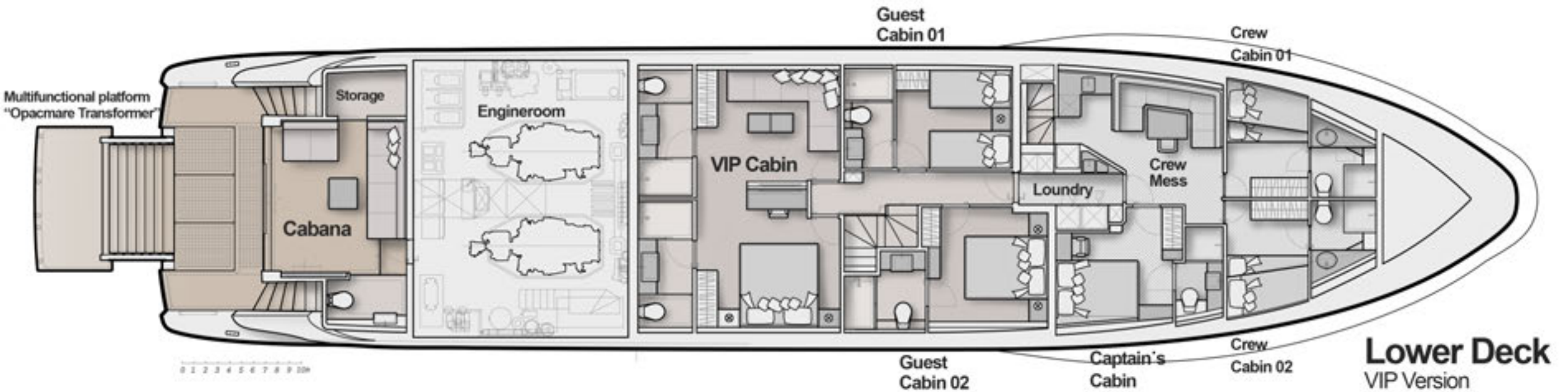
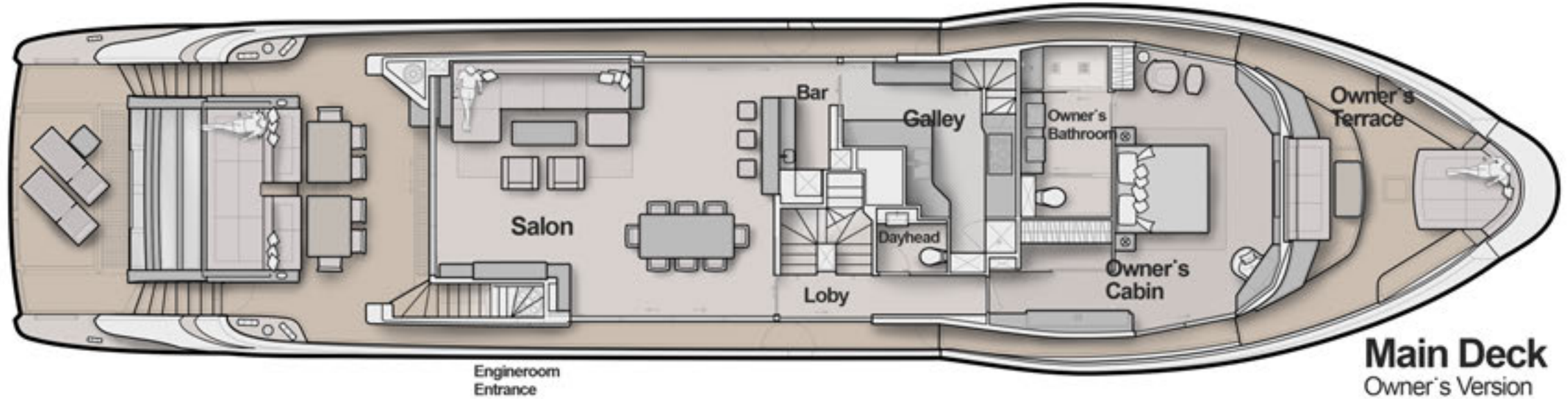


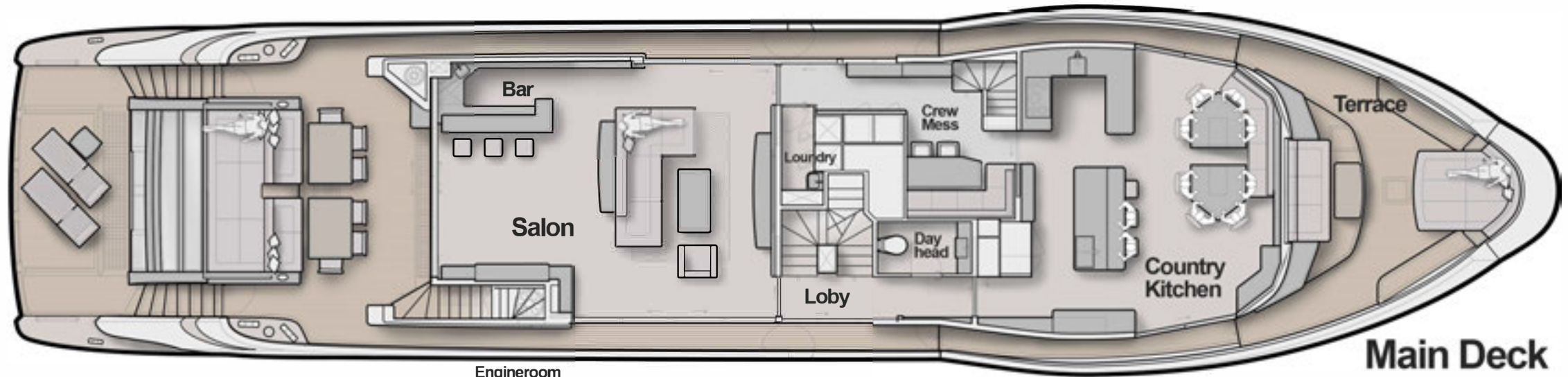


ATLANTIC 115
built by Heesen

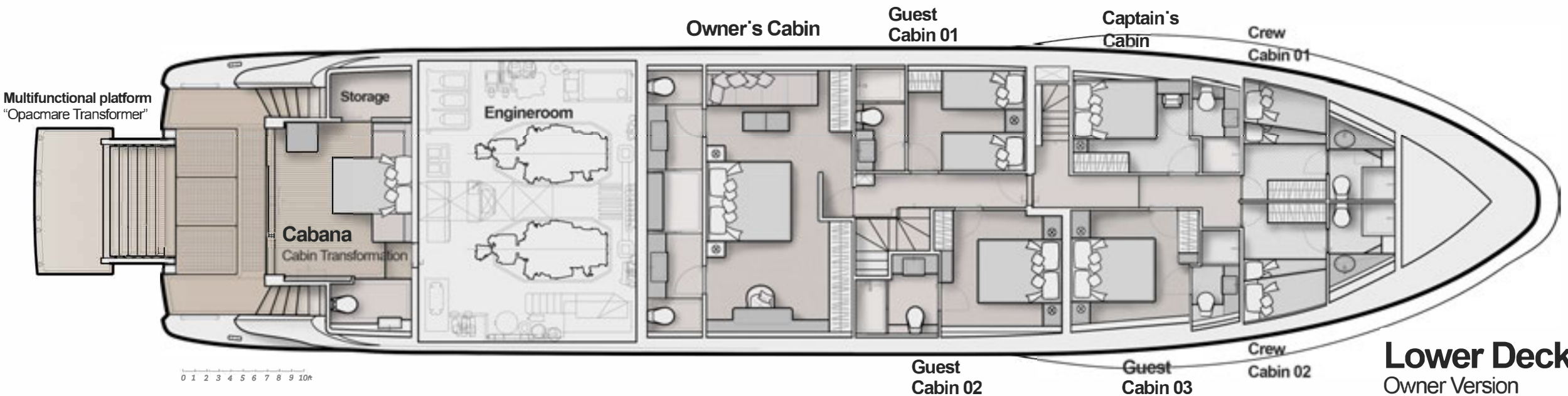








Main Deck
Country kitchen Version



Lower Deck
Owner Version



阻力试验

$T=1.465\text{ m}$

$V_s=24\text{ kn}$

ATLANTIC 115

built by HeySea



Atlantic Yacht & Ship, Inc.
850 NE 3rd Street #213
Dania Beach, FL 33004 USA
954.921.1500

UNIELLE
Yacht Design
Jure Bukavec
www.unielle.com

Atlantic Yacht & Ship, Inc., 850 NE 3rd Street, Suite 213, Dania Beach, FL 33004
CONTACT: Andrey Shestakov, cell: +1 954 274-4435 , email: andrey@ayssales.com

Free call on Russia: 8 800 234-4456

Moscow and Moscow region: +7 495 766-6268, +7 985 766-6268

<https://www.atlanticyachtandship.ru/>