

VELDER — WOUTER NIEUWVELD BV



Builder: Wouter Nieuwveld BV

Year Built: 2007

Model: Motor Yacht

Price: PRICE ON APPLICATION

Location: Netherlands

LOA: 75' 6" (23.00m)

Beam: 21' 4" (6.50m)

Min Draft: 4' 8" (1.40m)

Cruise Speed: 14 Kts. (16 MPH)

Our experienced yacht broker, Andrey Shestakov, will help you choose and buy a yacht that best suits your needs **Velder — Wouter Nieuwveld BV** from our catalogue. Presently, at Shestakov Yacht Sales Inc., we have a wide variety of yachts available on our sale's list. We also work in close contact with all the big yacht manufacturers from all over the world.

If you would like to buy a yacht **Velder — Wouter Nieuwveld BV** or would like help answering any questions concerning purchasing, selling or chartering a yacht, please call **+1(954)274-4435**

TABLE OF CONTENTS

TABLE OF CONTENTS	2
SPECIFICATIONS	4
Basic Information	4
Dimensions	4
Speed, Capacities and Weight	4
Accommodations	4
Hull and Deck Information	4
Engine Information	5
DETAILED INFORMATION	6
Features	6
Accommodations	6
Audio And Visual Equipment	6
Electronics and Navigational Equipment	6
Engine /Mechanical Equipment	7
Remarks	7
Exclusions	7
Disclaimer	7
PHOTOS	8
Owner's cabin	8
Owner'scabin	8
Galley	8
Galley	8
VIP room	8
Guest room	9
Bathroom	10
Deck	10
Engine room	11
Detail	11

Detail	11
CONTACTS	12
Contact details	12
Telephones	12
Office hours	12
Address	12

SPECIFICATIONS

Basic Information

Category: Motor Yacht	Sub Category: Displacement
Model Year: 2007	Year Built: 2007
Country: Netherlands	

Dimensions

LOA: 75' 6" (23.00m)	Beam: 21' 4" (6.50m)
Min Draft: 4' 8" (1.40m)	

Speed, Capacities and Weight

Cruise Speed: 14 Kts. (16 MPH)	Water Capacity: 1954.8731848 Gallons
Holding Tank: 343.4236676 Gallons	Fuel Capacity: 2694.5549304 Gallons

Accommodations

Total Cabins: 3	Total Berths: 6
Sleeps: 6	Total Heads: 2

Hull and Deck Information

Hull Material: Aluminum	Deck Material: Teak over Aluminum
Hull Configuration: Round Bilged Displacement	Hull Color: blue
	Hull Finish: Aluminum
Hull Designer: W. Nieveld	Interior Designer: W. Nieveld

Engine Information

Engines: 2

Manufacturer: John Deere

Model: 6081 AFM 75 M3

Engine Type: Inboard

Fuel Type: Diesel

DETAILED INFORMATION

Features

Modern retro styled motor yacht. Mahogany interior with teak floors, spacious accommodation and very excellent manoeuvrability by rotating props (Hyprop). This aluminium round bilge motor yacht with double spray rail was designed and built in 2007 by Wouter Nieuwveld Scheepsbouw BV (former winner of the Dutch Aluminium Yacht and Shipbuilder's Award 1996). Hull and superstructure in aluminium. Lloyd's Hull-Approval A1, CE-A. Fully equipped, built to high Dutch standards.

Accommodations

Outside: Aft deck with built-in seats and table. Two stairs down to platform. Outside shower on swimming platform. Platform can be reached by opening big transom hatch. This hatch can be used as under water stairs for swimming as well as for embarking small tender or amphibian craft. Side entrances in bulwark on both sides. In front of the deckhouse an outer steering position with built-in bench and two seats. The front deck offers an other cosy small bench and opposite the best seat of the boat, right in the stern. Interior: Large main saloon with wide opening doors at same level as aft deck, with sofa and chairs, small washing basin and icecube maker. Steering position with comfortable armchair. One level lower fully equipped galley with electric cooker, microwave, dishwasher, freezer, refrigerator. All households top quality Siemens. Master cabin in front with showercabin plus design washbasin and separate toilet, large headroom. Second very large cabin with double bed, shower, washbasin and toilet. Third cabin with upper/lower berths, washbasin and showercabin. Separate toilet, also meant as day-toilet for general use.

Audio And Visual Equipment

Airco, central heating, flatscreens for monitoring navigation and engine systems, shower on deck, phone connection in each cabin, aircompressor, drinkwater and deckwashpump, central manifold unit, hydraulic gangway with remote control (Besenzoni). Sun tent on aft deck and on outer steering position in front of the deck house.

Electronics and Navigational Equipment

Furuno radar 1824 C black box radar, Furuno Network Sounder ETR-6/10. Weathermap and Navtex Furuno, GPS Furuno GP-320B, WAAS navigator, Electronic Compass NMEA 0183, Gyro Hydrosta, Maps: C-Map NT -MAX EW-M005, VHF Sailor with DSC, GSM Telsat GPRS, internet Celwave CEL 24 WI-FI, Navigation Lights LED plus conventional SB PS stern, Autopilot Hydrosta. Satellite TV antenna KVH Tracvision.

Engine /Mechanical Equipment

Two John Deere engines 6081 AFM 75 M3, each 330 HP. Fuel capacity 10,200 liters, extensive hydraulics for propulsion engines, bowthruster (45 HP), gangway, swimming platform and anchor winch. Generator 27 Kw Kohler. Capacity watertanks 7,400 liter water. Waste tank grey water 1 x 650 liter, black water 1 x 650 liter.

Remarks

Nearly new yacht which was professionally built and very well-maintained. All systems up and running and providing lots of space in combination with good speed (14 knots) and outstanding manoeuvring capabilities.

Exclusions

Owner's personal belongings.

Disclaimer

The Company offers the details of this vessel or yacht in good faith but cannot guarantee or warrant the accuracy of this information nor warrant the condition of the vessel. A buyer should instruct his representatives, agents, or his surveyors, to investigate such details as the buyer desires validated. This vessel or yacht is offered subject to prior sale, price change, or withdrawal without notice.

PHOTOS

Owner's cabin



Owner's cabin



Galley



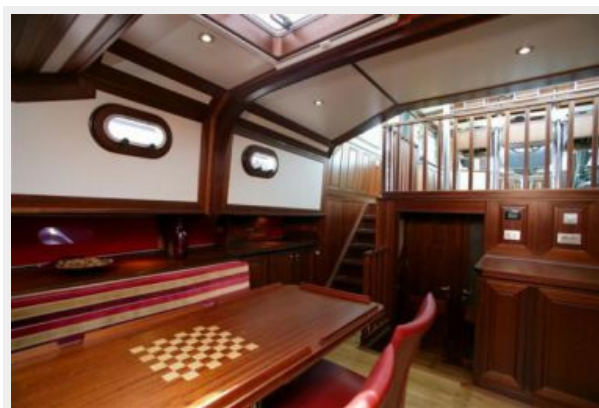
Galley



VIP room



Guest room



Bathroom



Deck



Engine room



Detail



Detail



CONTACTS

Andrey Shestakov, leading yacht broker of the sales department of Shestakov Yacht Sales Inc. Shestakov Yacht Sales Inc., the official representative of the Miami/Fort Lauderdale FL headquarters.

Contact details

Email: **andrey@shestakovyachtsales.com**

Web: shestakovyachtsales.com/en/

Telephones

USA: **+1(954)274-4435**

Office hours

Monday – Saturday: **9:00 - 21:00 EDT**

Sunday: **closed**

Address



Harbour Towne Marina, 850 NE 3rd St,
STE 213, Dania, FL 33004