

36 ALBIN 1979 — ALBIN



Builder: ALBIN

Year Built: 1979

Model: Trawler

Price: PRICE ON APPLICATION

Location: United States

LOA: 36' 0" (10.97m)

Beam: 13' 2" (4.01m)

Max Draft: 3' 6" (1.07m)

Cruise Speed: 7 Kts. (8 MPH)

Max Speed: 9 Kts. (10 MPH)

Our experienced yacht broker, Andrey Shestakov, will help you choose and buy a yacht that best suits your needs **36 Albin 1979 — ALBIN** from our catalogue. Presently, at Shestakov Yacht Sales Inc., we have a wide variety of yachts available on our sale's list. We also work in close contact with all the big yacht manufacturers from all over the world.

If you would like to buy a yacht **36 Albin 1979 — ALBIN** or would like help answering any questions concerning purchasing, selling or chartering a yacht, please call **+1(954)274-4435**

TABLE OF CONTENTS

TABLE OF CONTENTS	2
SPECIFICATIONS	4
Overview	4
Basic Information	4
Dimensions	4
Speed, Capacities and Weight	4
Accommodations	4
Hull and Deck Information	5
Engine Information	5
DETAILED INFORMATION	6
Accommodations	6
Exclusions	6
Disclaimer	7
PHOTOS	8
Docked	8
Docked Aft	8
Head	8
Docked Forward	8
Cabin	9
Other cabin picture	9
Old view of lower helm	9
Side deck	9
Old view of exterior	9
Old view of exterior	9
NEW PICTURE JANUARY 14, 2014 Exterior	10
NEW PICTURE JANUARY 14, 2014	10
NEW PICTURE JANUARY 14, 2014 Foredeck	10
NEW PICTURE JANUARY 14, 2014 Bridge	10

NEW PICTURE JANUARY 14, 2014 Forward Berth	10
NEW PICTURE JANUARY 14, 2014 Interior	10
NEW PICTURE JANUARY 14, 2014 Head	11
NEW PICTURE JANUARY 14, 2014 Interior	11
NEW PICTURE JANUARY 14, 2014 Woodwork	11
NEW PICTURE JANUARY 14, 2014 Lower Helm	11
NEW PICTURE JANUARY 14, 2014 Interior and flooring	11
NEW PICTURE JANUARY 14, 2014 Salon	11
NEW PICTURE JANUARY 14, 2014 Interior	12
CONTACTS	13
Contact details	13
Telephones	13
Office hours	13
Address	13

SPECIFICATIONS

Overview

The owner has just spent a long time in cleaning this boat up, to make her visually appealing. Mechanically, according to the owner, he would take her anywhere. Now that its looking better, his wife may join him (before, she wasn't going on it).

Basic Information

Category: Trawler	Sub Category: Double Cabin
Model Year: 1979	Year Built: 1979
Country: United States	

Dimensions

LOA: 36' 0" (10.97m)	Beam: 13' 2" (4.01m)
Max Draft: 3' 6" (1.07m)	Clearance: 12' 4" (3.76m)

Speed, Capacities and Weight

Cruise Speed: 7 Kts. (8 MPH)	Max Speed: 9 Kts. (10 MPH)
Displacement: 18500 Pounds	Water Capacity: 200 Gallons
Holding Tank: 40 Gallons	Fuel Capacity: 350 Gallons

Accommodations

Total Cabins: 2	Total Berths: 4
Sleeps: 4	Total Heads: 2

Hull and Deck Information

Hull Material: Fiberglass

Deck Material: Teak

Hull Configuration: Full Displacement

Engine Information

Engines: 1

Manufacturer: Lehman

Engine Type: Inboard

Fuel Type: Diesel

DETAILED INFORMATION

Accommodations

THERE IS ONLY ONE 36 ALBIN PRICED UNDER \$35,000 IN THE WORLD & THIS ONE IS UNDER \$30K!!!

This boat needs some TLC in order to bring her back. Boat runs great! There are many interested parties that have looked at her. It will take the right person that wants a solid boat for an inexpensive price and willing to do some cosmetics work on it. This boat will be sold soon! If you are looking...make your move NOW!

Needs some cosmetic TLC and loving, mechanically sound. At this price (almost \$20,000 less than the next least expensive 36 Albin), its a steal. Hurry, this one wont be around too long. Structure is solid, just normal trawler stuff. A bunch of varnish and some elbow grease and this baby comes back. Perfect for a live-aboard.

Has a window A/C unit that goes with the boat. Also a marine A/C unit that is not installed.

NOTE FROM OWNER; New aluminum fuel tanks, new holding being installed, new bimini sunbrella material on boat, not placed on SS rails. Two stateroom model with two double bunks in aft stateroom and the normal V-berth forward, two heads both with handheld showers, hot water. The galley has a gas stove/oven, 110 electric refrigerator, sink with hot & cold water, fresh water pump and two large water tanks. Window unit A/C. There is no generator on board, but has a nice inverter, that runs most everything. VHF, compass, hailer and a depth finder. The exterior condition is relatively good, britework needs some TLC, some fresh paint would go a long way as well, but it is not bad. Swim platform needs a little work, and a couple of hatches needs a little re-work. Interior wise, it does need work, not as bad as some, but the usual past water intrusion from windows primarily, the exterior fiberglass is good and intact, no de-lamination. Interior wood could use some TLC, some wood would just need a good sanding and some new varnish (most of it) and there is some that would need plywood replaced.

It is very usable now and this summary may make it out to be worst then it is, just so wanted to make sure that there are no surprises. All systems, engine, running gear, electrical, plumbing, all work well, There would be no hesitation to run her anywhere. She has been ran all around North Carolina, and is a good performer.

Exclusions

Owner's personal belongings.

Disclaimer

The Company offers the details of this vessel or yacht in good faith but cannot guarantee or warrant the accuracy of this information nor warrant the condition of the vessel. A buyer should instruct his representatives, agents, or his surveyors, to investigate such details as the buyer desires validated. This vessel or yacht is offered subject to prior sale, price change, or withdrawal without notice.

PHOTOS

Docked



Docked Aft



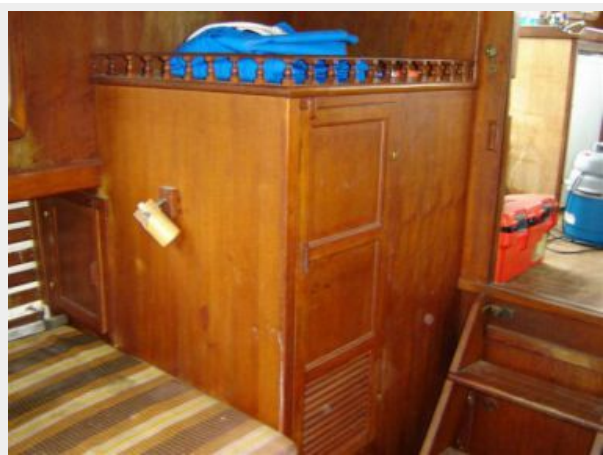
Head



Docked Forward



Cabin



Other cabin picture



Old view of lower helm



Side deck



Old view of exterior



Old view of exterior



NEW PICTURE JANUARY 14, 2014 Exterior



NEW PICTURE JANUARY 14, 2014



NEW PICTURE JANUARY 14, 2014 Bridge



**NEW PICTURE JANUARY 14, 2014
Foredeck**



**NEW PICTURE JANUARY 14, 2014 Forward
Berth**



NEW PICTURE JANUARY 14, 2014 Interior



NEW PICTURE JANUARY 14, 2014 Head



NEW PICTURE JANUARY 14, 2014 Interior



**NEW PICTURE JANUARY 14, 2014
Woodwork**



**NEW PICTURE JANUARY 14, 2014 Lower
Helm**



NEW PICTURE JANUARY 14, 2014 Salon



**NEW PICTURE JANUARY 14, 2014 Interior
and flooring**



NEW PICTURE JANUARY 14, 2014 Interior



CONTACTS

Andrey Shestakov, leading yacht broker of the sales department of Shestakov Yacht Sales Inc. Shestakov Yacht Sales Inc., the official representative of the Miami/Fort Lauderdale FL headquarters.

Contact details

Email:
andrey@shestakovyachtsales.com

Web: shestakovyachtsales.com/en/

Telephones

USA: +1(954)274-4435

Office hours

Monday – Saturday: 9:00 - 21:00 EDT

Sunday: closed

Address



**Harbour Towne Marina, 850 NE 3rd St,
STE 213, Dania, FL 33004**