

SAPUCAI — PRESIDENT YACHTS



Судостроитель: PRESIDENT YACHTS

Год постройки: 2008

Модель: Моторная яхта

Цена: **ЦЕНА ЯХТЫ ПО ЗАПРОСУ**

Местонахождение: Italy

Длина общая: 69' 3" (21.10m)

Ширина: 20' 9" (6.30m)

Макс. осадка: 9' 7" (2.90m)

Крейс. скорость: 9 Kts. (10 MPH)

Макс. скорость: 12 Kts. (14 MPH)

Купить Sapucaí — PRESIDENT YACHTS а также выбрать подходящую вам яхту из нашего каталога яхт вам поможет опытный яхтенный брокер Андрей Шестаков. На сегодняшний день компания Shestakov Yacht Sales Inc. имеет большое количество яхт в собственном списке продаж, а также тесно сотрудничает со всеми крупными яхтенными производителями по всему миру.

Для того чтобы купить яхту Sapucaí — PRESIDENT YACHTS а также проконсультироваться по любому вопросу связанному с покупкой, продажей, чартером яхт позвоните по телефону **+7(918)465-66-44**.

ОГЛАВЛЕНИЕ

ОГЛАВЛЕНИЕ	2
ХАРАКТЕРИСТИКИ	4
Обзор	4
Основная информация	4
Размеры	4
Скорость, вместимость и масса	4
Размещение	5
Корпус и палуба	5
Информация о двигателе	5
ПОДРОБНОЕ ОПИСАНИЕ	6
Accommodations	6
Aft deck	6
Audio And Visual Equipment	6
Deck Equipment	7
Electronics and Navigational Equipment	8
Guest Stateroom	10
Hull	10
Engine /Mechanical Equipment	11
Office/Study	13
Tenders	13
Исключения	13
Отказ от ответственности	13
ФОТОГРАФИИ	14
КОНТАКТЫ	20
Контактная информация	20
Телефоны	20
Время работы	20
Адрес	20

ХАРАКТЕРИСТИКИ

Обзор

This President yacht is designed using innovative technologies to optimize performance, livability, comfort, and other practical features not standard or seen on other yachts this size to take you anywhere in the world efficiently and safely. The interior was designed by Alessandro Loni Coppede for comfort and elegance

Основная информация

Тип судна: Моторная яхта

Модельный год: 2008

Год постройки: 2008

Страна: Italy

Открытая палуба мостика: Да

Размеры

Длина общая: 69' 3" (21.10m)

Ширина: 20' 9" (6.30m)

Макс. осадка: 9' 7" (2.90m)

Скорость, вместимость и масса

Крейс. скорость: 9 Kts. (10 MPH)

Макс. скорость: 12 Kts. (14 MPH)

Чистый вес: 100 Pounds

Вместимость воды: 1146.50670568
Gallons

Вместимость сточного бака:
298.51441876 Gallons

Объем топливного бака: 5410.24362496
Gallons

Расход топлива: 3.96258078 Gallons

Размещение

Всего кают: 4

Всего коек: 5

Спальные места: 8

Всего ком. состава: 4

Каюты экипажа: 1

Койки экипажа: 3

Спальных мест экипажа: 3

Комм. состав экипажа: 1

Корпус и палуба

Материал корпуса: GRP

Материал палубы: Teak

Комплектация корпуса: Monohull

Цвет корпуса: Flag Blue

Дизайнер корпуса: Ted Hood

Информация о двигателе

Двигатели: 2

Производитель: Caterpillar

Модель: C-7 ACERT

Тип двигателя: Inboard

Тип топлива: Diesel

ПОДРОБНОЕ ОПИСАНИЕ

Accommodations

The Interior of the boat was designed by Alessandro Loni Coppedè with An Owner's suite with private terrace.

Multiple dining areas with ample seating.

Three spacious guest staterooms and private heads including a Vip private office convertible to guest stateroom (sofa-queen size bed).

Private crew stateroom (3 beds) with head and lounge on lower deck.

Aft deck

Beach step ladders at swimming platform

Audio And Visual Equipment

Entertainment Equipment

Sat TV: Trac Vision M5 antenna – predisposition in every cabin for TV SAT – TV digital – FM (already wired- system ready).

Digital Terrestrial TV: Banten cod. 00334-00335 antenna predisposition in every cabin for digital TV

Internet wireless on board: 3 unit wireless and wired router Mac Airport Extreme, in all area inside and outside the boat there is internet wireless (LAN).

Internet wired: in all cabin, office, saloon, PH plug RJ45 wired and connected.

Data central storage: Iomega Nas System storepro 150 D (1.5 terabytes)

Printer-fax-scanner –copy: HP C7280 all in one, server printer.

Video server & Cameras: Video server AVtech AVC760A + 2 cameras for safety and security in engine room and at stern, model PDR 15IRSD, the images can be split to crew mess TV, on the LAN on each Furuno chart plotter and on the web.

Hi-Fi: Sonos system in all cabins, PH & saloon, in each area one Sonos controller CR100, one Sonos amplifier ZP100r and two speakers Focal IW 106, on exteriors: fly, owner's bridge and main bridge Pioneer watertight speakers. Music library of 40.000 song on Iomega Nas, 300 between movie, cartoon and documentary (Italian, english, Chinese), radio via web (when internet connection available).

TV: Saloon TV lcd 32" Kolin with electrical remote controlled popup, crew mess TV lcd 22" Chimei.

Deck Equipment

Anchor Windlass: 1 x Lofran's mod.: Titan B with two chain gypsy on sides and one rope capstan on top.

Chain counters: 2 x Lofran's LOLOOCMI (one unit in pilot one in fly).

Winches 2 X Lofran's T1500 at stern.

Anchors: 4 on board: One 80kg Bruce anchor on port side and one 110kgs CQR anchor on starboard side and 2 x safty Fortress FX 85 Alloy.

Chains: two 1/2" Chains: 400 feet (122mt) Acco® high tensile hot galvanized steel anchor chain.

Cable Reel: Brand Glendinning model CM-7 FOR 50 AMP

Electronics and Navigational Equipment

Compass: Ritchier compasses one FB500 in fly bridge one F600 in Pilot House

Primary radar: Furuno, 24kw, at helm Model: 1964C/NT with 4' open array antenna

Backup radar: Furuno, 12kw, at helm Model: 1954C/NT with 4' open array antenna

Chart plotter:Furuno, 4 x Model: GP1920C/NT two at helm and two at flying bridge

GPS: Furuno, one at flying bridge Model: GP37

Autopilot: Simrad 2 x Model:AP 50 , at helm, repeater at flying bridge, system ready (already wire) for a second backup central unit, already installed 2 feedback units on steering system.

Ais: Furuno, one at helm Model: FA150

NavtexFuruno, one at helm Model: FM 700A

Wind date and depth sounder: Furuno, 4 x Model: RD30 at helm, flying bridge, starboard cabin and crew cabin

Weather Station Instrument: 1 x Arimar PB POWER BOAT100

Wind Analogic instrument: 1 x Furuno FI 50

Sonar: Furuno, 1 x Model: CH-270 at helm

Satellite compass: Furuno, 1 x Model: SC50 at helm

Multiple Sensor Imagin System: NVTI NV 5000 Image Intensified Night Vision Camera (Gen III), Thermal Imaging Camera, High Resolution Color Camera for daytime use. Featuring auto focus, optical zoom, and digital zoom.

PC Navigation: one PC brand Shuttle model SD30G2 PLUS in pilot house with 17" video with wireless mouse and keyboard Logitech. and in fly repeater 15" watertight video Argonaut, trackball-mouse and keyboard waterticht.

Communication Equipment

VHF: Furuno 2 x Model: FM3000, one each at helm and flying bridge

SSB: Furuno, one at helm Model: FS1570

Inmarsat-C: Thrane&Thrane, on at chart table Model: Mini-C + sailor Printer and Message Terminal, all GMDSS.

Inmarsat-Fleet 55: Thrane&Thrane, on at chart table Model: F55 + handset

Inmarsat-Fleetboardband 500: Thrane&Thrane, on at chart table Model: FB500 + handset

Iridium: 2 fixed antennas one for Ph, one for Owner's cabin

Wi Fi Antenna Repeater: Wireless Outdoor CPE/AP/REPEATER: brand 4IIPNET model CPE100 that keep the signal from outside (marina) and give it back in all the interiors and exterior of the boat.

Intercom: Panasonic on each bridge, possibility to plug in SIM for GSM UMTS 3G communication

Telephone GSM/Fax: Fixed wireless Terminal for WCDMA/HSDPA tel. and fax Ericsson model W25

PC Communication: one PC brand Shuttle model SD30G2 PLUS (back pu of the nav. Pc) in pilot at chart table with 21" video HP w2007v with wireless mouse and Logitech Keyboard.

Gsm Antenna: on top of mast (steel connected at 30nml!)

Guest Stateroom

Guest staterooms port and starboard

Hull

Hand laminated with vacuumed bag hull, deck and superstructure. The hull of this yacht moulded in gel coat were CCP® 953LN082 Flag Blue colour.

First three layers of hull laminate used vinyl ester resin for superior blister

resistance. The specifications of vinyl ester resin please see information provided by the manufacturer. Hull bottom and topsides were laminated with multiple layers of chopped strand mat and bi-axial fabric, in composite with vinyl ester or polyester resin.

The hull bottom and shell is supported by a combination of Corecell™ PVC

foam-cored, PU foam stiffeners and structural bulkheads. All PVC foam throughout with vacuum bag construction method.

Hull and deck bolted joint with fiberglass laminate. The foam-cored fiberglass

stiffeners are laminated into the primary hull structure.

Through-hull penetrations would be core removed and replaced locally with solid laminate or plywood reinforcements.

Engine /Mechanical Equipment

Main Engines

Twin Caterpillar high performance heavy-duty operation I-6, 4-stroke-cycle diesel engines. Caterpillar C7 supplies 275 bhp (205 kW) each at rated speed 2400 rpm with Twin Disc 5075SC transmission. Full caterpillar inspection in 2013 with warranty extended for five years without any other inspection needed,

Cover by Caterpillar total warranty until July 2015,

New battery master volt in 2013 for: genset, engines, emergency, thruster.

Fuel Consumption of Engine 205KW/2400RPM

Load	Engine Rpm	Gals/Hour	Liters/Hour
1/4 Load	1570	4.0	15.14
1/2 Load	1930	8.3	31.42
3/4 Load	2180	11.8	44.66
Full Load	2400	14.9	56.40

Generators Genset 1900 hours

Northern Lights

2 x M944W can supply continuously 26KW at 50HZ/1500RPM mono-phase. contains a water-cooled, 4 cylinders and 203 in³ displacement diesel engine.

Fuel Consumption of Generator 26KW/50HZ/1500RPM

Load	Gals/Hour Liters/Hour	
	Gals/Hour	Liters/Hour
1/2 Load	1.2	4.16
Full Load	2.3	7.41

Steering Gear: 3 x Kobelt electronic engine controls at each helm station, these controls are directly connecter to the engine throttle and transmission selector by electrical cable. Emergency hydraulic steering system and throttle at stern installed in 2010 (independent wheel + piston).

Stabilizer System: Naiad® hydraulic roll stabilizer model 254 (temp. system as per manual between 49c and 60°c – oil SAE 10W40).

Bow Thrusters: Side Power® model SP240TCI - Motor output 11.2 Kw

Gasoline purification: Alfa Laval mod. MIB 303 SEPARATION SYSTEM and 2 racor filter for each engine, 1 racor filter for each gen set an for webasto heating system.

Water makers: 2x Sea recovery AQUA WHISPER C, (one with new membrane in 2013) 260 h each.

Sewage treatment: Hamann AG® Super Mini™ EPA standard and USCG certified MSD as per 33 CFR §159.57(17) treatment plant can handle 38 US Gal. per day whereby 12 persons

produce 3.16 US Gals. of black water per day.

Office/Study

VIP private office convertible to guest state room (Sofa converts to queen size bed)

Tenders

2 Dinghy: One Pirelli P Zero 420 VTR (60 lt. Tank) Powered Mercury 40 HP 3 cylinder 4 stroke (Propeller Diameter 10-5/8 Pitch 12 13X26 Gear ratio: 2.00:1), equipped with VHF Raymarine RAY240E, horn, bilge pump, nav. Lights, Mercury electronic multi display.

One Zodiac G380 Military Inflatable Futura powered Mercury 20 HP 2 cylinders 4 stroke

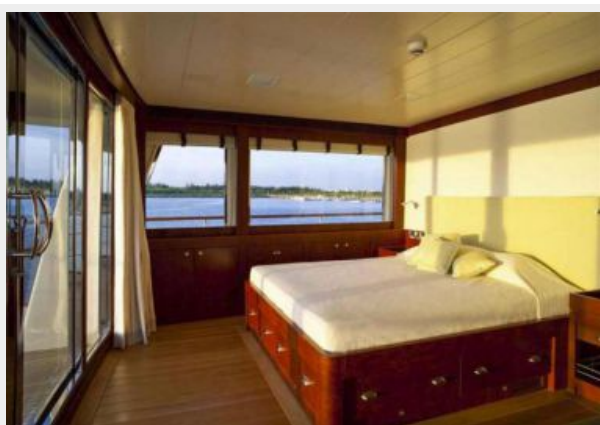
Исключения

При продаже яхты исключаются личные вещи владельца.

Отказ от ответственности

Компания предоставляет описание судна или яхты добросовестно, но не может гарантировать точность этой информации, а также не ручается за техническое состояние. Покупатель должен проинструктировать своих агентов или оценщиков исследовать представленную информацию более подробно, по собственному желанию. Продажа судна или яхты, изменение цены или снятие с продажи будет происходить без предварительного уведомления.

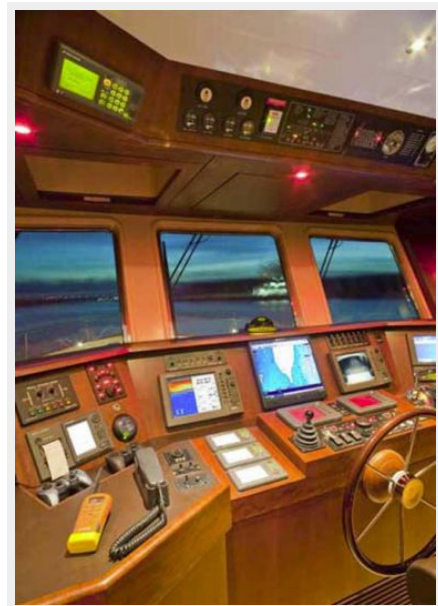
ФОТОГРАФИИ













КОНТАКТЫ

Андрей Шестаков (Andrey Shestakov) – ведущий яхтенный брокер отдела продаж яхт и судов компании Shestakov Yacht Sales Inc. Официальный представитель Shestakov Yacht Sales Inc. для русскоговорящих клиентов в центральном офисе компании в Майами/Форт Лодердейл/Флорида/США.

Контактная информация

Email: andrey@shestakovyachtsales.com

Web: shestakovyachtsales.com

Телефоны

Краснодарский край: **+7(918)465-66-44**

США, Майами, Флорида: **+1(954)274-4435**

Время работы

Понедельник – Суббота: **9:00 - 21:00**
EDT

Воскресенье: **Закрито**

Адрес



Harbour Towne Marina, 850 NE 3rd St,
STE 213, Dania, FL 33004