

ARIETE PRIMO — RICHARD DUNSTON



Судостроитель: [Richard Dunston](#)

Год постройки: 1967

Модель: Моторная яхта

Цена: **ЦЕНА ЯХТЫ ПО ЗАПРОСУ**

Местонахождение: Italy

Длина общая: 144' 9" (44.10m)

Ширина: 31' 3" (9.50m)

Макс. осадка: 14' 2" (4.30m)

Крейс. скорость: 13 Kts. (15 MPH)

Купить **ARIETE PRIMO** — **Richard Dunston** а также выбрать подходящую вам яхту из нашего каталога яхт вам поможет опытный яхтенный брокер Андрей Шестаков. На сегодняшний день компания **Shestakov Yacht Sales Inc.** имеет большое количество яхт в собственном списке продаж, а также тесно сотрудничает со всеми крупными яхтенными производителями по всему миру.

Для того чтобы купить яхту **ARIETE PRIMO** — **Richard Dunston** а также проконсультироваться по любому вопросу связанному с покупкой, продажей, чартером яхт позвоните по телефону **+7(918)465-66-44**.

ОГЛАВЛЕНИЕ

ОГЛАВЛЕНИЕ	2
ХАРАКТЕРИСТИКИ	4
Обзор	4
Основная информация	4
Размеры	4
Скорость, вместимость и масса	4
Размещение	4
Корпус и палуба	5
Информация о двигателе	5
ПОДРОБНОЕ ОПИСАНИЕ	6
Accommodations	6
Engine /Mechanical Equipment	7
Electronics and Navigational Equipment	8
Galley	10
Audio And Visual Equipment	10
Deck Equipment	11
Tenders	11
Remarks	11
Исключения	12
Отказ от ответственности	12
ФОТОГРАФИИ	13
Dining	13
Main Salon	13
Master Stateroom	13
Master Stateroom	13
Master Bathroom	13
Guest 01	13
Guest 02	14

Twin	14
Al Fresco Dining	14
Aft Deck	14
Spa	14
Spa	14
Jacuzzi	15
Running	15
Profile	15
Running	15
КОНТАКТЫ	16
Контактная информация	16
Телефоны	16
Время работы	16
Адрес	16

ХАРАКТЕРИСТИКИ

Обзор

Serious ocean going cruiser

Основная информация

Тип судна: Моторная яхта

Подкатегория: Ocean Going

Модельный год: 1967

Год постройки: 1967

Год обновления: 2006

Страна: Italy

Размеры

Длина общая: 144' 9" (44.10m)

Ширина: 31' 3" (9.50m)

Макс. осадка: 14' 2" (4.30m)

Скорость, вместимость и масса

Крейс. скорость: 13 Kts. (15 MPH)

Дальность на крейсерской скорости:
5000

Водоизмещение: 1406.54923156 Pounds

Чистый вес: 550 Pounds

Вместимость воды: 3434.236676 Gallons

Объем топливного бака: 31172.302136
Gallons

Размещение

Всего кают: 6

Спальные места: 14

Каюта капитана: Да

Спальных мест экипажа: 9

Корпус и палуба

Материал корпуса: Steel

Материал палубы: Teak

Комплектация корпуса: Full
Displacement

Информация о двигателе

Двигатели: 1

Производитель: Ruston

Модель: RUSTON mod 9ATCM4S 2315 hp
at 600rpm

Тип двигателя: Inboard

Тип топлива: Diesel

ПОДРОБНОЕ ОПИСАНИЕ

Accommodations

Main Deck :

Aft deck is accessed from ashore by way of a telescopic passarelle. There is also an extending hydraulic platform that provides for an ideal fishing platform for use underway. The aft deck is expansive, with two large capstans and cleats on each side, and a dining table that is protected from the weather by the deck above. The aft salon doors are automatic, giving access to the main salon which extends forward to incorporate various guest areas in an open-plan configuration. Aft is the formal reception area with seating and a central service bar. Immediately forward is the private dining area. To port is the crew vertical access which brings the crew up to all decks and has a dumb-waiter following it up from the galley below. To starboard is a generously sized storage cupboard for service items. Then there is a breakfast table to starboard and additional seating, whilst to port is a lounge area with the TV screen.

Going forward to starboard takes us up stairs to the Owner's deck.

To port is the access corridor to the guest cabins. There is a day-head to starboard, whilst the first area to port is the Spa area, with Hydromassage bath, Jacuzzi and Hamman shower, chromatherapy, as well as a large storage area for towels, linen and products.

To starboard is a double cabin with an additional single bed, walk-in wardrobe and generous bathroom. Next to starboard is a double cabin with walk-in wardrobe and bathroom, and all the way forward is the very spacious twin cabin with ensuite bathroom and walk-in wardrobe.

Lower Deck

Aft is the crew area. There are 3 twins and 1 triple, and the spacious kitchen. The crew mess is to starboard. Forward of this is the laundry, and the main access to the Engine Room.

The Engine room is amidships, and predictably is very large. There is more than ample room to access all machinery and to service it. There is a large control room situated to port of the Engine Room.

Forward of the Engine room is a double guest cabin to starboard, with an extra single bed, walk-in wardrobe and ensuite bathroom. The access stairs for the guests is to port, which connect to the deck above at the level of the Spa. And forward is another double cabin with a walk-in wardrobe and ensuite bathroom.

Owner's Deck

The aft open deck is very expansive, and equipped with a variety of exterior lounge furniture. There is a large dining table situated forward and under cover of the deck-head above, with a servery bar located on the forward bulkhead with fridge and sinks. A sliding door accesses into the owner's sky lounge which has a small bar to starboard, and a crew access to port, where their stair communicated from the galley two decks below. The lounge is a comfortable relaxing area, which can be transformed into a party zone with DJ turntables, amps and speakers to provide the music. Forward to starboard there is the Owner's private study. To port there is the access door that leads into the Owner's private suite. The dressing room is located in the passageway leading forward to the owner's cabin. The owner's cabin has a central king bed facing aft, and a bathroom located to starboard.

Bridge Deck

Aft is located the tender storage area and cranes. Then there is a large Jacuzzi and raised deck area. Access stairs to starboard lead up to the fly-bridge where a second crew tender is stored, and there is access to the mast and all the antenna installations.

A sliding door leads into bridge, with the Captain's cabin to port, with internal stairs coming up from the Owner's deck, and the passageway leading forward to the chart-table and radio room. There is a centrally located day-head for guests. Two lateral doors access the side-decks for operating the wing-stations.

Engine /Mechanical Equipment

Fuel: 118,000 litres

Lube Oil : 2,100 litres

Gray water : 3,200 litres

Water: 13,000 litres

Watermakers : 2 X 350 litres/hour Idromar

Ballast: 39 tonnes

Consumption (ME only) :

13 knots : 320 litres per hour.

12 knots : 290 litres per hour.

11 knots : 260 litres per hour.

9 knots : 210 litres per hour.

Main engine:

RUSTON mod 9ATCM4S 2315 hp at 600rpm

Totally rebuilt, hours set to zero in 2006. The big service affected last winter due to the RINA 5 year survey (heads removed, valves checked and/or replaced, calibration, sleeves and bearings checked) Hours to date : 1720

Generators:

They were zeroed in 2010. Now showing 1850 hrs.

Injectors replaced last winter.

Consumption of approx. 150 litres each over a 24 hour period.

1 X Marine gear : Hindmarch/MWD

1 X Bilge oil separator.

WC's : JETS vacuum system.

Blackwater treatment : Techni-SA 300 litres/hour

AC : Reverse cycle : 2 X Frigorica compressors

2 X Compressors and pressure tanks for engine start.

2 X Hot water boilers of 120 litres.

1 X Water sweetener + ultra violet filter.

1 X Fiat Iveco 400 HP engine to drive bow-thruster.

1 X MAN 80 HP engine to drive water cannon.

1 X Fuel separator : Westfalia

Electronics and Navigational Equipment

1 X Seatel TV SAT DAC 2200

- 2 X Furuno GPS GP-90
- 1 X Furuno AIS
- 1 X Fleet 77 : Felcom F70
- 1 X Furuno Inmarsat C
- 1 X Capsat antenna linked to ship's PC.
- 1 X Furuno SSB
- 1 X Furuno VHF with GMDSS
- 1 X Panasonic telephone exchange : KX T7 630
- 1 X LCD monitor + PC.
- 1 X Alarm control system (lights, levels, alarms, doors, fire etc)
- 1 X Furuno 96m Arpa radar with AIS.
- 1 X Emergency phone : bridge, ER & steering locker.
- 1 X Loudhailer.
- 1 X Plath magnetic compass.
- 1 X Sperry Marine Gyro compass.
- 1 X Kelvin Hughes magnetic compass on flybridge.
- 1 X Sperry Marine autopilot.
- 1 X Furuno VHF HS 2003
- 1 X Furuno Doppler log DS 80
- 1 X navtex Furuno NX 700
- 1 X Furuno Chartplotter Navnet/C-Map NT MAX
- 1 X Furuno windspeed/direction F 130
- 1 X Printer Furuno PP510
- 1 X Printer for general use : HP Laserjet 3055
- 2 X McMurdo handheld R2 VHF GMDSS

Electrical System:

380v tri-phase.

Shorepower transformer with seamless transfer from shore to generators.

2 X 80 KvA Onan genrators.

1 X 150 KvA shaft alternator.

Galley

1 X Large ironing board with Polti steam iron.

1 X Miele washer.

1 X Miele dryer.

1 X Miele washer/dryer.

1 X Miele steam oven.

1 X NMiele microwave.

1 X Trash compactor.

1 X Wine cave fridge.

1 X large chest height freezer + fridge.

1 X Walk-in fridge.

1 X very large sink.

2 X sinks.

1 X Ice-maker.

1 X Miele 4 pot hot plate.

2 X Miele 2 pot hot plates.

1 X Miele convection oven.

Audio And Visual Equipment

All guest cabins fitted with DVD player and SAT decoder.

Owner's cabin TV : Samsung 26"

Main salon TV : Samsung 42" + ONYKO Amp and Tuner

Owner's lounge TV : Samsung 42" on lift + Amp + Mixer + 2 X Pioneer turntables.

Guest cabins + crew mess + captain's cabin : Sharp 23"

Crew mess : Alarm control repeater.

Bose speakers throughout + on aft exterior decks.

Deck Equipment

Pasarelle : 4.5m telescopic Bitechnomare

Hydraulic extending fishing platform with chair and rod holders.

Anchor chain : galvanised steel ½ inch, with 7 shackles to port and 6 shackles to starboard.

Hydraulic boarding ladder to starboard.

Aft deck capstans.

2 X Tender cranes Viscovo 1800 T.

Tenders

1 X Windsurfer.

1 X Zodiac 3.6m with 9.9 HP Johnson.

1 X 19' Marlin with 150 HP Yamaha outboard.

1 X Waverunner : Yamaha WX Cruiser.

1 X Jet-ski Yamaha Superjet.

Remarks

A truly unique vessel. Ariete Primo was gutted and totally rebuilt, keeping only the hull to main deck and her engine and propulsion gear. The re-build has been followed in intricate detail by a fastidious and meticulous Owner who strived to retain the character of her former identity whilst incorporating all the new systems and comforts of a super-yacht.

Исключения

При продаже яхты исключаются личные вещи владельца.

Отказ от ответственности

Компания предоставляет описание судна или яхты добросовестно, но не может гарантировать точность этой информации, а также не ручается за техническое состояние. Покупатель должен проинструктировать своих агентов или оценщиков исследовать представленную информацию более подробно, по собственному желанию. Продажа судна или яхты, изменение цены или снятие с продажи будет происходить без предварительного уведомления.

ФОТОГРАФИИ

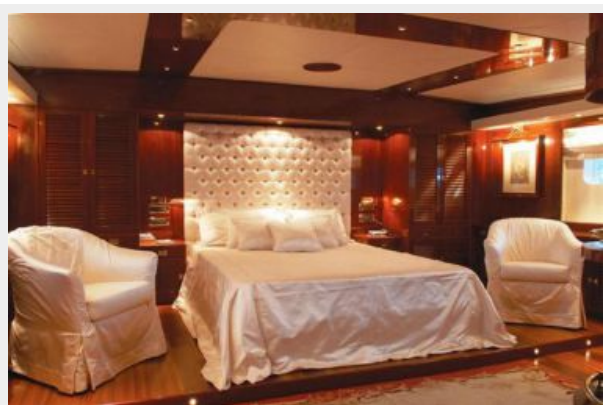
Dining



Main Salon



Master Stateroom



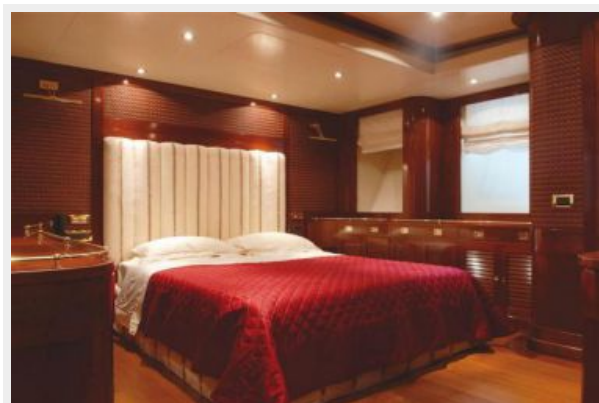
Master Stateroom



Master Bathroom



Guest 01



Guest 02



Twin



Al Fresco Dining



Aft Deck



Spa



Spa



Jacuzzi



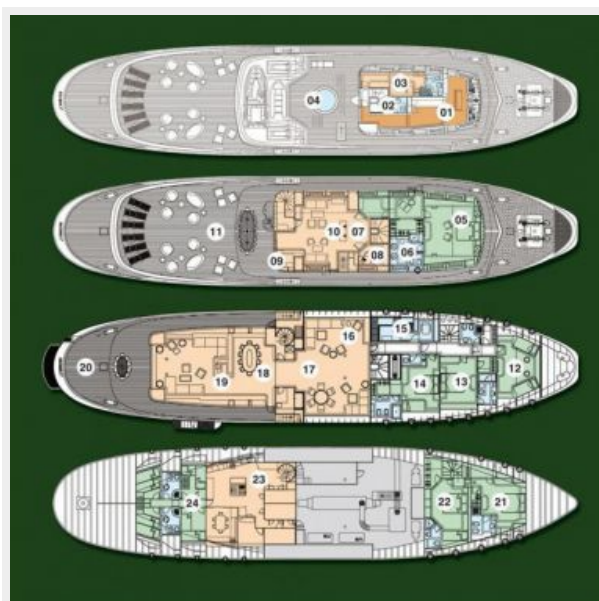
Running



Running



Profile



КОНТАКТЫ

Андрей Шестаков (Andrey Shestakov) – ведущий яхтенный брокер отдела продаж яхт и судов компании Shestakov Yacht Sales Inc. Официальный представитель Shestakov Yacht Sales Inc. для русскоговорящих клиентов в центральном офисе компании в Майами/Форт Лодердейл/Флорида/США.

Контактная информация

Email: andrey@shestakovyachtsales.com

Web: shestakovyachtsales.com

Телефоны

Краснодарский край: **+7(918)465-66-44**

США, Майами, Флорида: **+1(954)274-4435**

Время работы

Понедельник – Суббота: **9:00 - 21:00**
EDT

Воскресенье: **Закрето**

Адрес



Harbour Towne Marina, 850 NE 3rd St,
STE 213, Dania, FL 33004