

KOCHAB — TAYANA



Builder: TAYANA

Year Built: 1981

Model: Cruising Sailboat

Price: PRICE ON APPLICATION

Location: United States

LOA: 42' 0" (12.80m)

Beam: 12' 7" (3.81m)

Min Draft: 5' 11" (1.78m)

Max Draft: 5' 11" (1.78m)

Our experienced yacht broker, Andrey Shestakov, will help you choose and buy a yacht that best suits your needs **Kochab — TAYANA** from our catalogue. Presently, at Shestakov Yacht Sales Inc., we have a wide variety of yachts available on our sale's list. We also work in close contact with all the big yacht manufacturers from all over the world.

If you would like to buy a yacht **Kochab — TAYANA** or would like help answering any questions concerning purchasing, selling or chartering a yacht, please call **+1(954)274-4435**

TABLE OF CONTENTS

TABLE OF CONTENTS	2
SPECIFICATIONS	4
Overview	4
Basic Information	4
Dimensions	4
Speed, Capacities and Weight	4
Hull and Deck Information	4
Engine Information	5
DETAILED INFORMATION	6
Accommodations	6
Deck	6
Electrical System	6
Electronics and Navigational Equipment	7
Engine /Mechanical Equipment	7
Galley	7
Sails and Rigging	7
Exclusions	7
Disclaimer	7
PHOTOS	8
Port Salon	8
Starb Salon	8
Nav Desk	8
Top and Front Loading Refrigerator	8
Galley View 2	9
Pullman Double	9
Head	9
Master cabin	9
Guest Berth Aft	9

Electric Panel	9
Clock and Barometer	10
Perkins 4108 Engine	10
Canoe Stern	10
Anchor Rollers	10
deck	10
cockpit	10
Teak Setting in cockpit	11
Lazarette	11
side deck	11
Tons of storage space	11
mask	12
roller furling	12
CONTACTS	13
Contact details	13
Telephones	13
Office hours	13
Address	13

SPECIFICATIONS

Overview

Seakindly and sturdy bluewater boat! Canoe stern, long fin keel with skeg-hung rudder with a classic sheer line for comfortable sailing performance. Solid hand laid fiberglass hull and robust construction! "Kochab" is cutter rigged with running backstays, has a roller furling genoa, deck stepped aluminum mast with two spreaders and a 2 reef main resting on a boom gallows. Insulated backstay. Equipped with good ground tackle. Freshly awlgripped decks (no teak). Bottom vinylester epoxy barrier coat in 02. Large aft cockpit with teak seating, new bimini and dodger. Solid stainless steel bow and stern rails, tall stanchions and granny bars at mast provide safe passage on deck. "Kochab" has beautiful wood joinery work and a nice interior layout.

Basic Information

Category: Cruising Sailboat

Model Year: 1981

Year Built: 1981

Country: United States

Dimensions

LOA: 42' 0" (12.80m)

LWL: 33' 0" (10.06m)

Beam: 12' 7" (3.81m)

Min Draft: 5' 11" (1.78m)

Max Draft: 5' 11" (1.78m)

MFG Length: 42' 0" (12.80m)

Speed, Capacities and Weight

Displacement: 9500 Pounds

Water Capacity: 200 Gallons

Fuel Capacity: 120 Gallons

Hull and Deck Information

Hull Material: Fiberglass

Engine Information

Engines: 1

Manufacturer: Perkins

Model: 4108

Engine Type: Inboard

Fuel Type: Diesel

DETAILED INFORMATION

Accommodations

Upon entering the companionway you will find a double pilot berth to port and a good size nav desk with curved seating. Across is the U shaped galley. Step down to the salon where you will find an L shaped settee to starboard, bench settee to port and a large drop leaf teak table that seats 8! Head is to port. The Master cabin features a double pullman to port, generous cabinets to starboard and an opening hatch. Forward of the master is a sail locker and an anchor locker!

Very nice teak joinery throughout Teak and holly sole L shaped settee to stbd Bench settee to port Navy Upholstery Large Teak dropleaf table Boston ship strike wind up clock Boston barometer Abundant storage Tall headroom Reading lights Overhead lights

20" Toshiba TV Phillips DVD/CD player/recorder 4 opening hatches w/ screen 2 bronze opening ports Pullman master berth Upholstered seat in master New Raritan electric head (08) storage cabinets good size hanging locker external air conditioning unit

Deck

Enjoy cruising or relaxing in the generous aft cockpit. 7' long curved teak bench seating will allow plenty of room to lay down. High coaming and SS stern rails provide safety and security. Freshly awlgripped decks (no teak). Bottom vinyl ester epoxy barrier coat in 02. Last bottom paint(07).

Manual 2 speed Windlass Double anchor rollers 3 anchors 300' 5/8" nylon rode 300' high tensile chain (2) 34# Lewmar ST winches (2) 42# Lewmar ST winches (3) 10# Lewmar winches on mast SS Granny bars at mast SS chainplates 32" Tall stanchions Double lifelines SS side gates High gunnels New dodger (07) Bimini w/white sunbrella(07) Teak seating in cockpit

Teak table teak drink holders Large lazarette with deep storage Canoe stern aluminum toe rail rub rail Sampson post in stern Teak louvered companionway doors Teak cockpit grate Scuppers Lifesling Emergency tiller Emergency bilge pump Safe return ladder Rub rail BBQ Cockpit speakers fire extinguishers 5 dorade vents

Electrical System

110V AC system 12V DC system 30 amp shore power cord 6 battery bank

Electronics and Navigational Equipment

Autohelm autopilot w/cabin controls Apelco VHF Garmin handheld GPS Compass Insulated backstay with SSB antenna

Engine /Mechanical Equipment

Excellent engine access in cabin sole.

Perkins 4108 Fresh water cooled Pedestal wheel steering New Jabsco bilge pump High water alarm Fuel filters Hot water heater Fresh water pump (07)

Galley

Top and front loading refrigeration 3 burner alcohol stove/oven Coleman 2 burner propane stove top Deep Double SS sink Pressure water system Salt water foot pump

Sails and Rigging

Original sails - good condition Cutter rigged Profurl roller furling genoa Mainsail Club footed staysail(in storage) Drifter - Spinnaker (in storage) Lazy jacks (08) Running rigging - good condition Wire standing rigging

Keel stepped mast running back stay SS boom gallows 2 reef points on main traveller

Exclusions

Owner's personal belongings.

Disclaimer

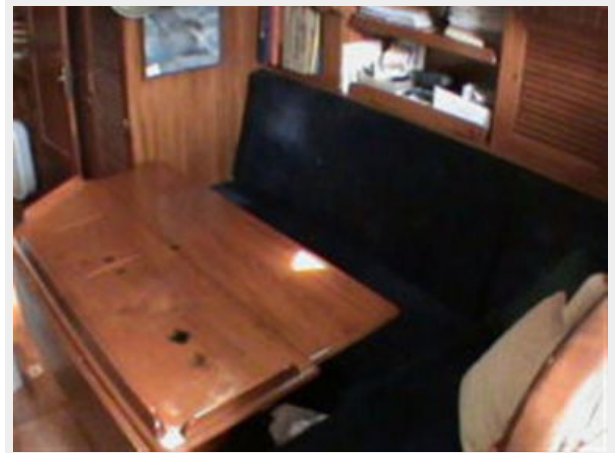
The Company offers the details of this vessel or yacht in good faith but cannot guarantee or warrant the accuracy of this information nor warrant the condition of the vessel. A buyer should instruct his representatives, agents, or his surveyors, to investigate such details as the buyer desires validated. This vessel or yacht is offered subject to prior sale, price change, or withdrawal without notice.

PHOTOS

Port Salon



Starb Salon



Nav Desk



Top and Front Loading Refrigerator



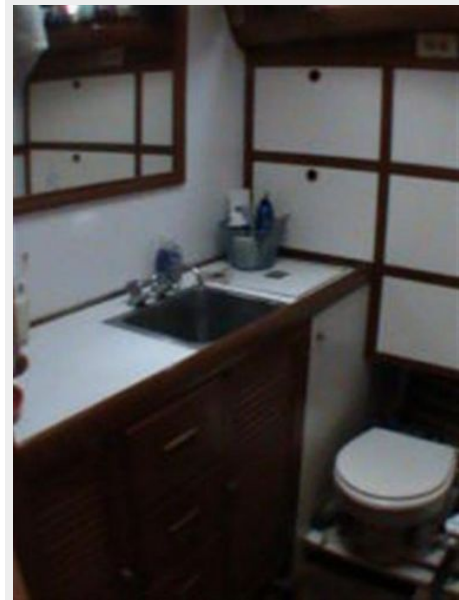
Galley View 2



Pullman Double



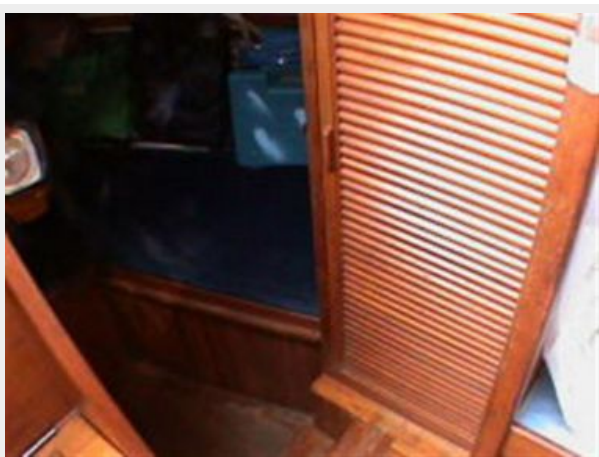
Head



Master cabin



Guest Berth Aft



Electric Panel



Clock and Barometer



Perkins 4108 Engine



Canoe Stern



Anchor Rollers



deck



cockpit



Teak Setting in cockpit



Lazarette



side deck



Tons of storage space



roller furling



mask



CONTACTS

Andrey Shestakov, leading yacht broker of the sales department of Shestakov Yacht Sales Inc. Shestakov Yacht Sales Inc., the official representative of the Miami/Fort Lauderdale FL headquarters.

Contact details

Email: andrey@shestakovyachtsales.com

Web: shestakovyachtsales.com/en/

Telephones

USA: +1(954)274-4435

Office hours

Monday – Saturday: **9:00 - 21:00** EDT

Sunday: **closed**

Address



Harbour Towne Marina, 850 NE 3rd St,
STE 213, Dania, FL 33004