

## CINQUE — AZIMUT



**Builder:** AZIMUT

**Year Built:** 2010

**Model:** Mega Yacht

**Price:** PRICE ON APPLICATION

**Location:** United States

**LOA:** 116' 0" (35.36m)

**Beam:** 24' 3" (7.39m)

**Max Draft:** 6' 8" (2.03m)

**Cruise Speed:** 25 Kts. (29 MPH)

**Max Speed:** 28 Kts. (32 MPH)

Our experienced yacht broker, Andrey Shestakov, will help you choose and buy a yacht that best suits your needs **CINQUE — AZIMUT** from our catalogue. Presently, at Shestakov Yacht Sales Inc., we have a wide variety of yachts available on our sale's list. We also work in close contact with all the big yacht manufacturers from all over the world.

If you would like to buy a yacht **CINQUE — AZIMUT** or would like help answering any questions concerning purchasing, selling or chartering a yacht, please call **+1(954)274-4435**

---

# TABLE OF CONTENTS

---

TABLE OF CONTENTS	2
SPECIFICATIONS	3
Overview	3
Basic Information	3
Dimensions	3
Speed, Capacities and Weight	3
Accommodations	4
Hull and Deck Information	4
Engine Information	4
DETAILED INFORMATION	5
Tax Not Paid	5
Accommodations	5
Extras	5
Flybridge	8
Exclusions	8
Disclaimer	8
PHOTOS	9
CONTACTS	22
Contact details	22
Telephones	22
Office hours	22
Address	22

---

# SPECIFICATIONS

---

## Overview

---

2011 Azimut 116 @ Deep Harbour Island Garden marina (Miami área) Generators 2x kolher  
65 kw 3,150 hours aprox.

## Basic Information

---

**Category:** Mega Yacht

**Model Year:** 2011

**Year Built:** 2010

**Country:** United States

**Vessel Top:** Hardtop

**Fly Bridge:** Yes

**Cockpit:** Yes

## Dimensions

---

**LOA:** 116' 0" (35.36m)

**Beam:** 24' 3" (7.39m)

**Max Draft:** 6' 8" (2.03m)

**MFG Length:** 116' 6" (35.51m)

## Speed, Capacities and Weight

---

**Cruise Speed:** 25 Kts. (29 MPH)

**Max Speed:** 28 Kts. (32 MPH)

**Displacement:** 315261.03466 Pounds

**Water Capacity:** 736 Gallons

**Holding Tank:** 370 Gallons

**Fuel Capacity:** 4700 Gallons

---

## Accommodations

---

**Total Cabins:** 5

**Total Berths:** 7

**Sleeps:** 10

**Total Heads:** 6

**Crew Cabin:** 3

**Crew Berths:** 5

**Crew Sleeps:** 5

**Crew Heads:** 3

---

## Hull and Deck Information

---

**Hull Material:** GRP

**Deck Material:** GRP

**Hull Configuration:** Planing

**Hull Color:** White

**Hull Finish:** Stainless Steel

**Hull Designer:** Stefano Righini

**Exterior Designer:** Stephano Righinni

**Interior Designer:** Carlo Galeazzi

---

## Engine Information

---

**Engines:** 2

**Manufacturer:** MTU

**Model:** V16 2000 M93

**Engine Type:** Inboard

**Fuel Type:** Diesel

---

## DETAILED INFORMATION

---

### Tax Not Paid

---

Tax Not Paid

### Accommodations

---

CINQUE has a large area on the aft deck for spacious guest dining and entertainment. Her saloon is also spacious with a large dining area; a large flat-screen TV and access to the lower deck. The AZIMUT 116 wheelhouse has a small settee and table so that guests are free to sit with the captain while cruising. CINQUE feature a fantastic sundeck flybridge where there is another dining area with a table for 12 as well as a settee, a sunbathing area, an exterior shower along with a Jacuzzi. The luxury yacht's master cabin is situated on her lower deck. It features a king-size bed, a settee, and a dressing table. It has a large ensuite consisting of a large shower (turkish bath), double sink and a toilet (hidden by a sliding door). A mini-bar, TV with Sky and DVD are also available. 2 twin cabins are both situated on the lower foredeck, each with showeroom, sink and WC. Both cabins have a small flat screen TV. There is also 2 further double cabins which are both situated on the lower foredeck, both have dressing table, small settee and flat screen TV's.

BOSE Lifestyle in Salon and all cabins & media room.

42" flat-screen TV in Salon & Media Room

LED TV in all cabins and utility room

Satellite antenna for internet

Satellite antenna KVH 47

### Extras

---

#### GENERAL

tropical air conditioning - Cruisair

hard top on flybridge

crane on the flybridge (650kg )

#### ELECTRIC SYSTEM

two 65 kW (60Hz) generators (splitting bars included ) **2,900 hours**

gel batteries

additional mastervolt charger for generator batteries

phone jack outlets in each stateroom, pilothouse, gallery, salon, crew cabins with wiring run to a central location in the pilothouse

telephones (one master, one cordless+slave phones in each area)

Panasonic PABX central unit

extra conduits connecting engine room- wheelhouse-flybridge-radar arch

dimmers for internal lights ( heads and galley excluded )

## **ELECTRONICS**

additional controls in wheelhouse (search light, fire extinguisher pump and anchor winch

220 v generators electrical system controls repeater in wheelhouse

fixed video camera un aft cockpit ceiling +zooming and pivoting video camera in engine room with colormonitor in wheelhouse (three cameras in engine room of the 86s in order to monitor the entire area)

TV sat decoders 3 DIRECTV MASTER TV ROOM AND SALON, 5 SKY MASTER, SALON, TV ROOM, 2 VIP.

Predisposition of SAT COM & SAT TV Navisystem

Satellite Antenna for TV complete of control unit, remote control

Internet Antenna complete of control unit, cables & GPS repeater

55' plasma in saloon

pivoting mechanism for TV Master Room.

Bose Lifestyle: Mod. 5.1

## **MISCELLANEOUS - EXTERNAL**

electric bow thruster 45 kw

stabilizers (4.5' fin for 80 and 85 -6' fin for 98, 105 and 116

zero speed stabilizers

pair of pop-up cleats on swim platform

pair of side boarding gates (in aft cockpit bulwark

pair of side boarding gates on bow

two underwater lights under swim platform

swiveling stools in stainless steel on flybridge bar (each)

sunbathing cushions on bow on the superstructure with stainless steel handrails

one curved fiberglass cabinet in cockpit with fridge

barbecue on flybridge

teak cover for jacuzzi tub on the flybridge

teak flooring on flybridge (all flybridge)

teak on swim platform

teak table in aft cockpit

### **MISCELLANEOUS - INTERNAL**

oil change system for main engines and generators

air conditioning duct in one guest head

120 l/h (32 gal/h) Idromar watermaker x2 = 240 c/u upgrade ultra violet light.

Double Racor filter for main engines

Double Racor filter for generators

Trash compactor

Garbage disposal

Additional folding bed in both guest cabins

additional spare grey water pump (not installed )

additional spare black water pump (not installed )

spare air conditioning pump (not installed)

additional 24 v back up fresh water pump

### **DÉCOR**

luxury décor version

varnished wooden floor in gallery

varnished wooden floor in wheelhouse

varnished wooden floor in salon

varnished wooden floor in dining area

varnished wooden floor in corridor and steps to wheelhouse

varnished wooden floor in utility room

canvas to cover carpet throughout the boat

## **TENDER AND JET SKI**

launching and recovering system for one jet ski (aft garage )

## **Flybridge**

---

TV 32´ Sunbrite

## **Exclusions**

---

Owner's personal belongings.

## **Disclaimer**

---

The Company offers the details of this vessel or yacht in good faith but cannot guarantee or warrant the accuracy of this information nor warrant the condition of the vessel. A buyer should instruct his representatives, agents, or his surveyors, to investigate such details as the buyer desires validated. This vessel or yacht is offered subject to prior sale, price change, or withdrawal without notice.



# PHOTOS



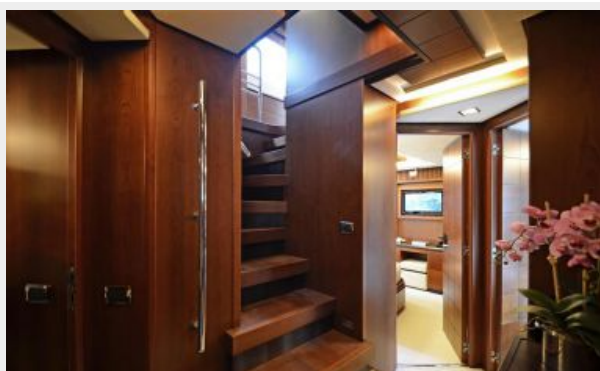












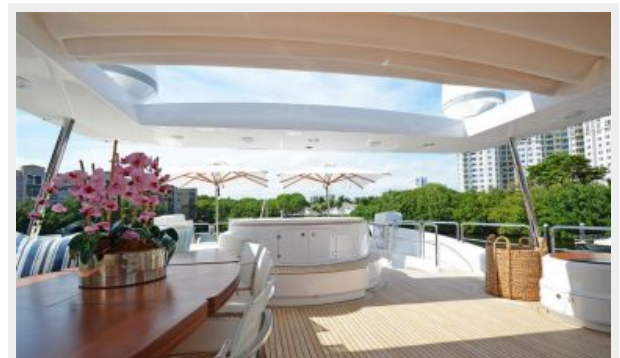


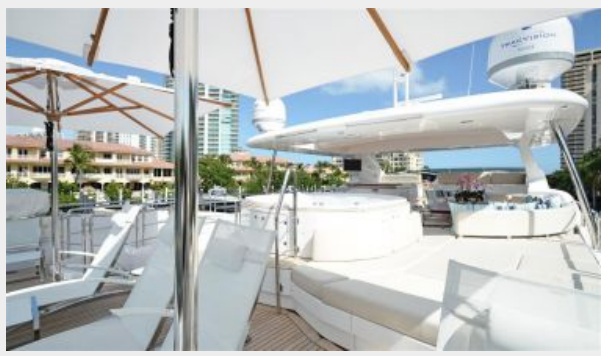






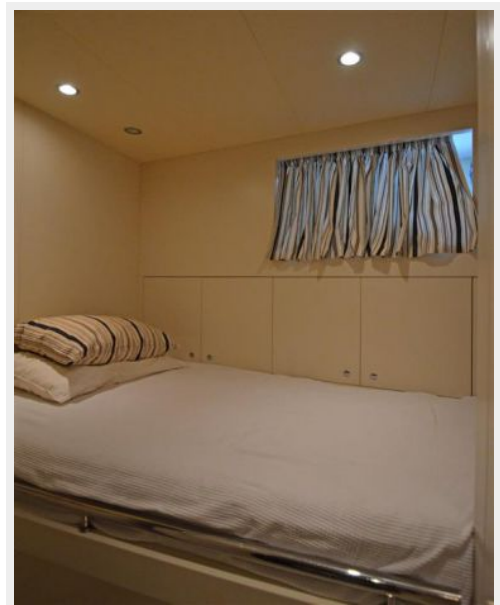


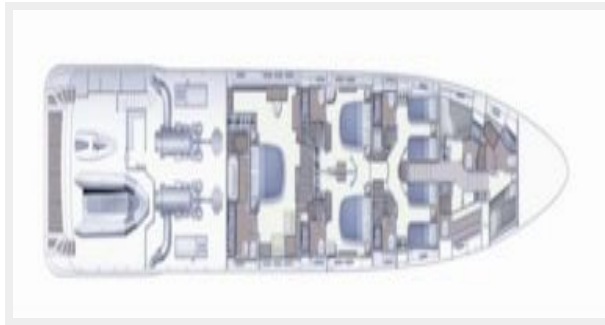
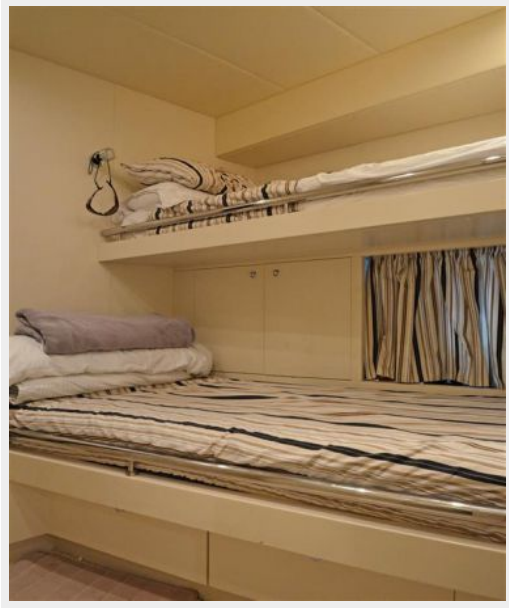














---

# CONTACTS

---

Andrey Shestakov, leading yacht broker of the sales department of Shestakov Yacht Sales Inc. Shestakov Yacht Sales Inc., the official representative of the Miami/Fort Lauderdale FL headquarters.

---

## Contact details

---

Email: [andrey@shestakovyachtsales.com](mailto:andrey@shestakovyachtsales.com)

Web: [shestakovyachtsales.com/en/](http://shestakovyachtsales.com/en/)

---

## Telephones

---

USA: +1(954)274-4435

---

## Office hours

---

Monday – Saturday: **9:00 - 21:00** EDT

Sunday: **closed**

---

## Address

---



Harbour Towne Marina, 850 NE 3rd St,  
STE 213, Dania, FL 33004