

WATERCOLOURS — TRINITY



Судостроитель: TRINITY

Год постройки: 1991

Модель: Моторная яхта

Цена: **ЦЕНА ЯХТЫ ПО ЗАПРОСУ**

Местонахождение: United States

Длина общая: 115' 0" (35.05m)

Ширина: 24' 5" (7.44m)

Макс. осадка: 5' 5" (1.65m)

Крейс. скорость: 15 Kts. (17 MPH)

Макс. скорость: 17 Kts. (20 MPH)

Купить **Watercolours — TRINITY** а также выбрать подходящую вам яхту из нашего каталога яхт вам поможет опытный яхтенный брокер Андрей Шестаков. На сегодняшний день компания **Shestakov Yacht Sales Inc.** имеет большое количество яхт в собственном списке продаж, а также тесно сотрудничает со всеми крупными яхтенными производителями по всему миру.

Для того чтобы купить яхту **Watercolours — TRINITY** а также проконсультироваться по любому вопросу связанному с покупкой, продажей, чартером яхт позвоните по телефону **+7(918)465-66-44**.

ОГЛАВЛЕНИЕ

ОГЛАВЛЕНИЕ	2
ХАРАКТЕРИСТИКИ	4
Обзор	4
Основная информация	4
Размеры	5
Скорость, вместимость и масса	5
Размещение	5
Корпус и палуба	5
Информация о двигателе	5
ПОДРОБНОЕ ОПИСАНИЕ	6
Introduction	6
Main Salon	6
Wheelhouse	7
Country Kitchen	7
Accommodations	8
Master Stateroom	8
VIP Stateroom	8
Guest Staterooms	8
Crew Accommodations	8
Deck & Hull Equipment	9
Aft deck	9
Cockpit	9
Flybridge	9
Electronics	10
Audio And Visual Equipment	10
Engine /Mechanical Equipment	10
Electrical System	10
Safety Equipment	11

Refit 2003	11
Refit 2006	11
Refit 2008	12
Yard Period 2010	12
Exclusions	13
Исключения	13
Отказ от ответственности	13
ФОТОГРАФИИ	14
КОНТАКТЫ	19
Контактная информация	19
Телефоны	19
Время работы	19
Адрес	19

ХАРАКТЕРИСТИКИ

Обзор

Watercolours epitomizes the quality of design, construction and finish from Trinity Yachts, the world's finest yacht builder. She was launched in 1991 and repurchased by Trinity in 2003. Trinity's owner then used her from 2003 until 2006 for his personal use. Under the direction of the company's owner, the vessel had two major refits while in Trinity's shipyard. Watercolours is a result of the perfect collaboration between an experienced Yachtsman and a shipyard that builds the world's finest yachts. The current owner purchased the vessel in 2007 and took her back to the shipyard in 2007/2008, wanting to bring the balance of the vessel into new condition. She underwent another extensive refit, but this time on her interior. Of immediate note is the exceptional finish and craftsmanship resulting from the main deck's interior being taken back to the bones during the rebuild. David Boudreux designed the interior with classic old world style. The vessel is traditionally styled in African Sapelle throughout the main decks, walls, floors and ceilings. During the refit a crew galley and formal dining areas were removed and replaced with an open, forward-facing country kitchen with panoramic views. Although forward in the vessel, the country kitchen is the social center of the vessel. It serves as the gathering area, or for watching the chef while cruising. The Sapelle and Holly floors are stunning and are throughout the main deck. The large windows provide plenty of natural sunlight and afford views of breathtaking destinations. Loose furniture, raised panel walls surrounding tasteful artwork, and copious lighting enhance the elegant salon. Combine all of this with an exterior that has entertaining areas found on much larger vessels, and you have a yacht that lives much larger than her contemporaries. She has an oversized aft deck with 2 dining tables that seat up to 16. The fly bridge is twice the size of most vessels of this length. NOT FOR SALE TO US RESIDENTS WHILE IN US WATERS

Основная информация

Тип судна: Моторная яхта

Модельный год: 1991

Год постройки: 1991

Год обновления: 2003

Вид обновления: Refit 2003, 2006, 2008 - **Страна:** United States
see details in listing

Открытая палуба мостика: Да

Размеры

Длина общая: 115' 0" (35.05m)

Ширина: 24' 5" (7.44m)

Макс. осадка: 5' 5" (1.65m)

Скорость, вместимость и масса

Крейс. скорость: 15 Kts. (17 MPH)

Макс. скорость: 17 Kts. (20 MPH)

Водоизмещение: 410059.80732 Pounds

Вместимость воды: 1600 Gallons

Объем топливного бака: 8000 Gallons

Размещение

Всего кают: 4

Спальные места: 8

Каюта капитана: Да

Каюты экипажа: 2

Койки экипажа: 2

Спальных мест экипажа: 6

Корпус и палуба

Материал корпуса: Aluminum

Материал палубы: Teak

Информация о двигателе

Двигатели: 2

Производитель: Caterpillar

Модель: 3412

Тип двигателя: Inboard

Тип топлива: Diesel

ПОДРОБНОЕ ОПИСАНИЕ

Introduction

Watercolours epitomizes the quality of design, construction and finish from Trinity Yachts, one of the world's finest yacht builders. She was launched in 1991 and repurchased by Trinity in 2003. Trinity's owner then used her from 2003 until 2006 for his personal use. Under the direction of the company's owner, the vessel had two major refits while in Trinity's shipyard. Watercolours is a result of the perfect collaboration between an experienced Yachtsman and a shipyard that builds the world's finest yachts. The current owner purchased the vessel in 2007 and took her back to the shipyard in 2007/2008, wanting to bring the balance of the vessel into new condition. She underwent another extensive refit, but this time on her interior. From August 2010 through October 2010, the vessel had another \$150,000 refit to include rebuild of one generator, servicing on 2nd generator, alignment of props/shaft, bottom job, and miscellaneous interior and exterior upgrades. This final upgrade truly made her turn-key for her next owner for personal or charter purposes. The vessel is a perfect charter vessel and the owner can defer a lot of the cost of ownership through charter income.

Of immediate note is the exceptional finish and craftsmanship resulting from the main deck's interior being taken back to the bones during the rebuild. David Boudreux designed the interior with classic old world style. The vessel is traditionally styled in African Sapelle throughout the main decks, walls, floors and ceilings. During the refit a crew galley and formal dining areas were removed and replaced with an open, forward-facing country kitchen with panoramic views. Although forward in the vessel, the country kitchen is the social center of the vessel. It serves as the gathering area, or for watching the chef while cruising. The Sapelle and Holly floors are stunning and are throughout the main deck. The large windows provide plenty of natural sunlight and afford views of breathtaking destinations. Loose furniture, raised panel walls surrounding tasteful artwork, and copious lighting enhance the elegant salon. Combine all of this with an exterior that has entertaining areas found on much larger vessels, and you have a yacht that lives much larger than her contemporaries. She has an oversized aft dek with 2 dining tables that seat up to 16. The flybridge is twice the size of most vessels of this length.

Main Salon

"Watercolours" features a beautiful custom interior with lavish woods and fabrics. The nautical theme is carried throughout the vessel as expressed with the Caribbean map displayed in a custom ceiling panel. Tastefully decorated in designer fabrics and furniture, she balances elegance and comfort. The salon is aft and is full width with large fixed windows port and starboard, together with a swinging door out to the aft deck. The salon has teak and holly soles, teak framed snakeskin ceilings, electric drapes, and electric blinds. All furniture, fabrics, and wool rugs were installed new in 2008. Forward in the Salon is a new Bose entertainment center and

Toshiba flat panel television, which is built into the furniture.

Starboard side aft is a custom onyx marble bar with stools, sink, glass and bottle storage, Franklin Chef wine cooler, and a U-Line bin type icemaker. Stairs down to the guest and owner's accommodations are located forward amidships.

Wheelhouse

The raised wheelhouse is a comfortable area for Owner or Captain to observe while cruising, dine, or perform office tasks. The wheelhouse is accessed from the starboard passageway. Aft is a set of stairs up to the flybridge with a sliding hatch. The wheelhouse has a 5-panel windshield with washers and wipers. The windshield is steeply raked. The windshield is fitted with a defroster. Portside aft is a bench seat with desk. Starboard side aft is a chart table with chart storage drawers.

Country Kitchen

Like the Salon, the Country Kitchen also features floorings of teak and holly, together with electric blinds, a 42" Toshiba pop-up television on a swivel base, and Bose stereo system. The kitchen also boasts a Miele coffee and cappuccino machine, Sub-zero refrigerator with custom teak arch doors, four Sub-zero freezer drawers, dishwasher, Sub-Zero ice maker, trash compactor, marble work areas, and a custom-made copper sink. All aspects of the Salon were installed new in 2008. The Country Kitchen is located in the front of the main deck and enjoys panoramic views. Although forward, this is the social center of Watercolours and tends to be the gathering area while cruising. The centerpiece of the kitchen is a beautifully crafted built-in banquet with seating for eight. The banquet has spunky zebra print fabrics, African woods, and a teak, oval shaped dining table. The table lowers on hydraulics to a coffee table. To port is a pop-up television that swivels to be seen from the entire room. Forward is a large padded area perfect for relaxing and simply enjoying the views, or for watching television while at cruise. Aft of the banquet is another large teak bar with seating for four, which is ideal for viewing the work of the chef and for food preparation. A yacht designer, a chef, and the owner expertly laid out the galley.

Aft to port is the entrance passageway to the country kitchen forward. Midship starboard is an entrance to the salon aft, a day head with toilet and washbasin aft, and a set of stairs up to the wheelhouse.

Stainless steel Sub-Zero refrigerator w/ Kitchen Aid microwave Kitchenaid 4 burner electric
 custom Mahogany wood doors Zero bin glass cooktop w/ oven below Miele coffee maker
 type icemaker (4) Sub-Zero under counter Kitchen Aid dishwasher Custom 10" deep copper

freezers

sink (24"x18")

Accommodations

Watercolours has four staterooms plus three crew quarters. Access to the staterooms is through the main salon via a staircase leading to a central foyer. Accommodations include a master suite, a VIP suite, and two identical guest staterooms. All staterooms have ensuite heads. The crew quarters are forward and consist of two cabins with double berths, together with a private captain's cabin with double berth accessed via the lazarette.

Master Stateroom

Lower level and aft is the full width master stateroom with centerline queen berth and opening portholes. The suite is complimented with a beautiful his and her master head featuring a large, double central shower. The entertainment center consists of a LG 37" LCD HDTV with Samsun BluRay DVD. The head has portholes with safety covers and Shoji screens.

VIP Stateroom

The VIP Stateroom could comfortably serve as a second master with one ensuite head, queen size berth, ample hanging closet space, and drawer storage. LG 32" LCD HDTV with Toshiba DVD player.

Guest Staterooms

Aft, midship port and starboard off of the companionway are two identical guest staterooms, each with double berth, a Sylvania 15" LCD television, and a iView DVD player. Handheld fire extinguishers are stowed in the hanging lockers. Each stateroom has opening portholes with safety covers. Forward off of each stateroom is a private head with toilet, washbasin, and enclosed shower.

Crew Accommodations

Starting forward at the lower level is the crew area. The crew area was redesigned and rebuilt in 2006. Fully forward is a crew head with toilet, washbasin, and a large shower stall intended to be shared with the other crew stateroom. Aft to port is a small cabin area with upper and lower berths. Each berth has an Audiovox overhead console with flip down television. Aft to port again

is the crew laundry area with a Miele model #W1113 washer and a Miele model #T1312 dryer. To starboard is a double crew cabin with upper and lower berths. This is a double cabin with upper and lower berths. Each berth has an Audiovox overhead console with flip down television. Forward is an entrance into the shared shower. Aft is an enclosed head with toilet and washbasin. At the aft end of the crew area are stairs up to the galley. Aft of the engine room and forward of the cockpit is an engineer's stateroom with double berth aft and private head with shower. Maximum total crew capacity is six.

Deck & Hull Equipment

The majority of the deck areas on "Watercolours" are teak. Areas where teak is not practical are covered with non-skid materials.

Twin 200 lb. anchors - forward
Stainless anchor - aft (2)
Muir 220 windlass with chain, wash & chain lockers

Proper fairleads and aluminum deck
cleats & chocks (2)
Passerelle

Aft deck

The huge, covered aft deck area has two beautiful teak tables, each of which has both chair and booth seating, and which together provide for alfresco dining for 16. There is a wide circular staircase for easy access to the Flybridge. The aft deck features a 42" television and a wet bar with sink, refrigerator and icemaker.

Cockpit

The enormous cockpit has multiple storage areas within a contained platform. A huge swim platform allows easy access to the vessel while swimming, diving, or entering from a floating dock. The engine room is also accessed from this area so that crew and mechanics can easily labor without impacting the interior of the vessel.

Flybridge

There is a huge flybridge, which is an inviting guest area and an ideal venue for entertaining. With plentiful seating for relaxing and dining, a complete bar, gas grill, and 6 person Jacuzzi, this area has it all.

Jenn Air refrigerator Icemaker Sink Jenn Air grill (2) 12 person life rafts ACR - rapid fix GPS EPIRB Bimini top 17' Novurania hard bottom inflatable w/ 115 Yamaha 4 stroke Marquipt hydraulic davit to lift (2,000 lb capacity) Jacuzzi - 6 person

Electronics

Kahlenberg horns w/ signal timer Sony Vaio ship's computer w/ NEC LCD display and Logitech wireless keyboard Panasonic multifunction phone Horn Furuno 15" radar - 48 mile (5) screens for TV, plotter, radar, depth Northstar 961X D ICOM M127 VHF radio SEA322 SSB radio Furuno NX500 nav Tex receiver Plath rudder angle indicator Second rudder angle indicator Stainless steel helm Horn control Jog control Wesmar bow thruster Uninterrupted power supply

Audio And Visual Equipment

The Salon and Galley each feature 42" Toshiba flat panel televisions with Bose surround sound audio systems. All starrooms and crew quarters have TV and DVD systems. The flybridge and aft deck have integrated music systems with outdoor plasma TVs.

Engine /Mechanical Equipment

Sewage plant by EVAC (2) 3412 CATs freshwater cooled marine diesels (2003) 3775 hours as of 10/2011, range 2000 nm (2) ZF #BW255 reversing gears (2) Offshore Marine Laboratories 1800 gpd watermakers Halon fire extinguishing system Workbench (5) Amerex dry chemical handheld fire extinguishers Ansul Sentry CO2 handheld fire extinguisher AC in engine room Central Vac system (2) AC electric toilet system vacuum pumps Lemoines Marine chilled water A/C system (2) Rheem 40 gallon hot water heaters Hydraulic bow thruster Aluminum workbench with vise Naiad Stabilizers Fire alarm control panel

Electrical System

(2) Northern Light 55 kw generators (1800 rpm) - 1 rebuilt 2010 and the other serviced in 2010 KVA 3 phase Sentry FR series 24v, 40 amp main engine start battery charger Charle C-Charger model #12205EG generator start battery charger Three phase 208v and single phase

shore power isolation transformer 115v, 60 cycle AC and 12v and 24v DC

Safety Equipment

EPIRB Life rafts Life rings Flares

Refit 2003

Estimated at \$2,000,000. The refit was done by Trinity, in the Trinity shipyard. This refit, completed in 2003, covered major cosmetic and mechanical improvements and the vessel was repowered with new caterpillars.

10 ft. lazarette extension w/ captain's stateroom 7 ft. cockpit w/ door Extended upper deck & flybridge - 12 ft. to match hull extension Move running gear aft Extended keel Installed spiral staircase to F/B Put Yacht into ABS class Installed new CAT 3412s, 1400 hp Installed new Sound Down water lift mufflers on gens Installed new electronic engine controls Added aft steering and control stations Installed new ORCA sewage treatment plant Completely rebuilt a/c system

Installed stern thruster Installed EMI stern pilot computer control for "at anchor"

Rebuilt stabilizer system Added two new watermakers Added two new water heaters Upgraded electronics Add all new batteries Added bar to main salon Complete refit of salon area Modified two guest staterooms forward into a single VIP stateroom w/ new head Added hot tub on F/B deck Installed new teak decks as needed Increased rudder size Increased stabilizer size Installed new passarelle Installed (5) DSS receivers Upgraded audio/video system Upgraded galley appliances

Refit 2006

Estimated < \$1,000,000 The following items were completed in September 2006 by the Trinity Shipyard. The refit focused mainly on new systems and major mechanicals.

(2) new 12 person canistered life rafts (2) new

Removed the crew quarters area to the metalwork. Rebuilt the crew quarters, including a modified layout. New plumbing, new electric, new entertainment electronics, new finish wood work, new washer and dryer, and new air conditioning handlers Refurbished the galley with new appliances, cabinetry, countertops, and flooring New plywood sub floors in galley, dining area, salon, and guest areas Refinished the whole interior All air handlers serviced. Two new handler units in dining and 2 new handler units in galley New floors in galley and salon Port & Starboard main watertight doors rebuilt New Furuno 48 mile black box radar w/ 15" Nav Net display All new mattresses Two new toilets in port & stb guest staterooms Refurbished teak decks. Replaced 2 planks on foredeck Teak cap rails stripped and recoated Anchor windlasses removed/rebuilt Anchors re-galvanized Anchor chains re-marked New flagstaff New exterior paint from the waterline up New flybridge windscreen Re-plumbed all seat locker drains on the F/B Installed 2 new locker hatches in the sun pad of the flybridge Tender was refit, which included new pontoons, bottom re-gel coated and engine rebuilt (2) new Murray Brothers tables for aft deck All new exterior cushions and canvas coverings New refrigerators & ice machines for aft deck & F/B

EPIRBs Davit removed, sent back to marquipt, & rebuilt New spotlights New BBQ grill w/ propane locker & gas alarm All new exterior speakers New Bimini top New ACR 600 spotlight mounted on arch Main engine exhausts rebuilt, blankets removed, new DeAngleo Marine Exhaust spray rings were installed w/ new blanketing Main Engines serviced Generators were serviced New AC chillwater system w/ condensers, chiller barrel, compressor, 2 raw water pumps. Added dedicated through-hulls for A/C w/ new seawater strainers New bilge pump New fire pump Bow thruster cooling pump New stabilizer cooling pump (2) hot water heaters New sewage transfer pump New start batteries for the main engines and generators New cutlass bearings for both shafts Both prop shafts were sent out and bench checked Both props were sent off and reconditioned at a prop shop New rudder bearings New macerator pump for the Orca Sewage treatment plant New potable water system ultraviolet sterilization unit and filter assembly Re-plumbed the suction piping of the water system Reinsulated the AC chillwater piping New membranes for the watermakers Painted all of the engine room deck plates New flooring for the lazarette

Refit 2008

The entire main deck was completely taken back to the main structure and rebuilt, including all new teak and holly floors, new day head, and all new galley, together with all new furniture, fabrics and artwork. The current owner spent an estimated \$1,250,000 on the 2008 refit.

Yard Period 2010

Summer 2010 saw rebuild of one generator, servicing on the 2nd generator, refurbishing and/or rebuilding of both A/C and chiller systems, reworked shafts and props, new varnish on the main

deck, replacement of all exterior fabrics, installation of a new Bimini top, touch up paint for the entire vessel, sanding and repairs to the teak deck, new bottom paint, and new bottom zincs, all at a cost of more than \$150,000.

Exclusions

Owner's Personal Effects.

Исключения

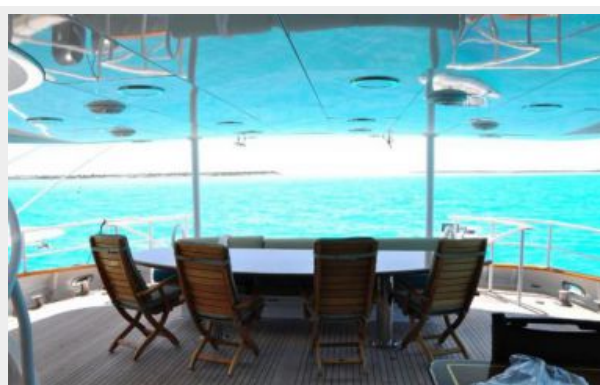
При продаже яхты исключаются личные вещи владельца.

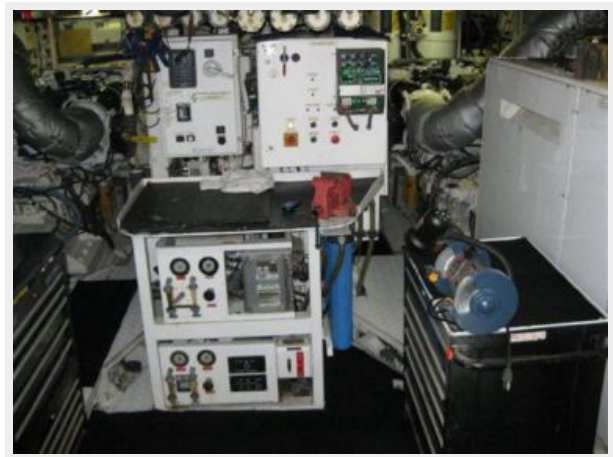
Отказ от ответственности

Компания предоставляет описание судна или яхты добросовестно, но не может гарантировать точность этой информации, а также не ручается за техническое состояние. Покупатель должен проинструктировать своих агентов или оценщиков исследовать представленную информацию более подробно, по собственному желанию. Продажа судна или яхты, изменение цены или снятие с продажи будет происходить без предварительного уведомления.

ФОТОГРАФИИ











КОНТАКТЫ

Андрей Шестаков (Andrey Shestakov) – ведущий яхтенный брокер отдела продаж яхт и судов компании Shestakov Yacht Sales Inc. Официальный представитель Shestakov Yacht Sales Inc. для русскоговорящих клиентов в центральном офисе компании в Майами/Форт Лодердейл/Флорида/США.

Контактная информация

Email: andrey@shestakovyachtsales.com

Web: shestakovyachtsales.com

Телефоны

Краснодарский край: **+7(918)465-66-44**

США, Майами, Флорида: **+1(954)274-4435**

Время работы

Понедельник – Суббота: **9:00 - 21:00**
EDT

Воскресенье: **Закрито**

Адрес



Harbour Towne Marina, 850 NE 3rd St,
STE 213, Dania, FL 33004