

YELLOW ROSE — CABO



Builder: CABO

Year Built: 2007

Model: Sport Fisherman

Price: PRICE ON APPLICATION

Location: United States

LOA: 48' 0" (14.63m)

Beam: 15' 8" (4.78m)

Max Draft: 4' 0" (1.22m)

Cruise Speed: 29 Kts. (33 MPH)

Max Speed: 34 Kts. (39 MPH)

Our experienced yacht broker, Andrey Shestakov, will help you choose and buy a yacht that best suits your needs **Yellow Rose — CABO** from our catalogue. Presently, at Shestakov Yacht Sales Inc., we have a wide variety of yachts available on our sale's list. We also work in close contact with all the big yacht manufacturers from all over the world.

If you would like to buy a yacht **Yellow Rose — CABO** or would like help answering any questions concerning purchasing, selling or chartering a yacht, please call **+1(954)274-4435**

TABLE OF CONTENTS

TABLE OF CONTENTS	2
SPECIFICATIONS	4
Overview	4
Basic Information	4
Dimensions	4
Speed, Capacities and Weight	4
Accommodations	4
Hull and Deck Information	5
Engine Information	5
DETAILED INFORMATION	6
Hull	6
Deck	6
Cockpit	6
Flybridge	7
Mechanical	7
Electrical	8
Main Cabin	8
Galley	9
Master Stateroom	9
Master Head Compartment	10
Forward Stateroom	10
Guest Head Compartment	10
Aft Guest Stateroom	11
Electronics	11
Optional Equipment	11
Disclaimer	12
Exclusions	12
Disclaimer	12

PHOTOS	13
CONTACTS	24
Contact details	24
Telephones	24
Office hours	24
Address	24

SPECIFICATIONS

Overview

Yellow Rose is a one owner boat, with 476 hours on its Caterpillar C-18s, with warranty in effect till June 2015 and two more years available. Boat is equipped with bow thruster, New 2013 four-sided enclosure on bridge, yacht controller and many more options. See full listing for more information. Call today for showing.

Basic Information

Category: Sport Fisherman

Sub Category: Convertible

Model Year: 2007

Year Built: 2007

Country: United States

Dimensions

LOA: 48' 0" (14.63m)

Beam: 15' 8" (4.78m)

Max Draft: 4' 0" (1.22m)

Speed, Capacities and Weight

Cruise Speed: 29 Kts. (33 MPH)

Cruise Speed RPM: 2000 Kts.

Max Speed: 34 Kts. (39 MPH)

Max Speed RPM: 2359 Kts.

Displacement: 45000 Pounds

Water Capacity: 100 Gallons

Holding Tank: 28 Gallons

Fuel Capacity: 1020 Gallons

Accommodations

Total Cabins: 3

Total Heads: 2

Hull and Deck Information

Hull Material: Fiberglass

Engine Information

Engines: 2

Manufacturer: Caterpillar

Model: C-18

Engine Type: Inboard

Fuel Type: Diesel

DETAILED INFORMATION

Hull

- Boot striping - choice of colors
- Bottom paint, complete preparation-2 coats epoxy, 2 coats anti-fouling paint; black, standard
- Hull, inside, finished white LP paint
- Molded fiberglass construction with superior ISO/NPG exterior gelcoat finish and premium vinylester resins; biaxial stitched fabric reinforcement; solid fiberglass bottom construction; core construction from chine to sheer (vacuum-bagged)
- Stainless steel rub strip on face of white high-density PVC rub rail
- Trim tabs, fully recessed

Deck

- Anchor roller assembly, custom recessed, stainless steel
- Bow cleats, 12" stainless steel
- Spring line cleats (4), custom
- Stern cleats, 12" stainless steel
- Stern hawse pipes, stainless steel
- Bow pulpit, integral molded fiberglass
- Bow rails, custom, aluminum, East Coast-style
- Deck surface, molded-in, non-skid
- Molded fiberglass using polyester resin, biaxial stitched fabric reinforcement and vacuum-bagged Core-cell construction
- Premium quality molded-in white gelcoat exterior finish
- Windlass, heavy-duty, DC electric, remote at bridge and deck switches

Cockpit

- Access door to engine room with ladder from cockpit
- Aluminum reinforcing plate installed for mounting fighting chair
- Bait prep center - sink, rigging board and tackle storage fitted with custom lid, gas spring, full-length stainless steel piano hinge and custom latch
- Bait tank, 48-gallon, molded into transom with large overboard drain and LED lighting
- Courtesy lighting under gunwales and flybridge overhang
- Fish boxes (2), large capacity, insulated, macerator pump-out system
- Gunwale padding, high-density foam, white vinyl covered

- Hatches, lazarette and fish boxes, heavy-duty, gasketed, drains, gutters, full-length stainless steel piano hinge and custom latch
- Hose and pistol-grip nozzle
- Icebox, starboard, fitted with gasketed lid, gas spring actuator, full-length stainless steel piano hinge and custom latch
- Rod holders (5)
- Scuppers, self-bailing
- Storage, boxes under gunwale with gaff racks
- Transom door with top gate, extreme duty, polished stainless steel hardware
- Washdowns, fresh-and saltwater

Flybridge

- Bench seat, forward of console, cushions, storage and insulated drink box
- Bridge ladder and safety rails to match deck rails, custom welded with 5 rocket launchers
- Compass, with light, flush-mounted
- Configurations, tournament-style
- Electronics console, custom-molded
- Engine instrument panel, custom, electronic display, polished stainless steel
- Fire and bilge high water level alarms, audible
- Helm and companion chairs, Bluewater, pedestal-mounted, adjustable
- Helm wheel, stainless steel
- Palm Beach pod, mounted, single lever electronic controls
- Rocket launchers, bridge rail, (5)
- Storage, lockers, forward
- Storage, cabinet at helm
- Switch panels, custom, stainless steel

Mechanical

- Bilge, aft, white linear polyurethane finish
- Bilge pumps (5), three automatic/manual, two automatic
- Double constant torque stainless steel clamps on engine exhaust hoses
- Double hose clamps on all hose fittings, stainless steel
- Dual engine room circulation fans, AC
- Electric fuel priming pumps
- Electronic controls with trolling valves, engine synchronizer and backup
- Emergency bilge pump diverter valve on one main engine
- Engine alarm system
- Engine room, white gelcoat finished
- Engine room blowers (2), DC
- Engine room sound insulation, high density barrier/foam

- Fire extinguishing system, manual/automatic
- Freshwater cooling, main engines
- Freshwater hose bib
- Freshwater pump, AC, with backup DC pump
- Fuel filters, with water separators, main engines and generator, large capacity
- Fuel lines, metal braided, fire-retardant
- Fuel tank, fiberglass, fire-retardant
- High water bilge alarms (3)
- Holding tank, 28 gal., with monitor, macerator and dockside discharge
- Mufflers, fiberglass, backwash surge tube
- Oil change system, main engines, generator and transmission
- Propeller shafts, double taper, couplers, high-strength stainless steel
- Propellers, Nibral
- Rudders, bronze, high-strength, with high load bearings (low friction, precise control)
- Sea cocks, UL approved for marine application bronze, fitted on all thru-hulls below waterline
- Power Steering system, hydraulic, Teleflex-Seastar
- Stuffing boxes, drip-less lip seal type
- Water heater, 11-gallon, AC, stainless steel
- Water intake scoops, bronze, high speed, with integral seawater strainers

Electrical

- 50' shore cord, Glendinning Cable Master, 220V, 50-amp
- Battery charger, automatic with thermal cut out
- Battery paralleling, automatic, with manual switch at helm
- Battery on/off switches, vapor-proof
- Bonding system with transom zinc plate
- Circuit breaker protection throughout
- Distribution panel, custom, AC electrical, with line voltage and load meter, reverse polarity light
- Distribution panel, custom, DC electrical, with battery voltage and load meter
- Electronic supply at helm, 24VDC and 12VDC at 50-amp
- Horn, dual air trumpet - uninstalled
- Lights, engine room, AC and DC
- Lights, interior, AC and DC
- Lights, navigation, international, uninstalled for future mounting on arch, hardtop or tower
- Receptacles, GFI protected, throughout boat
- Washer/dryer combination unit

Main Cabin

- AC duplex outlets/GFI protected
- Access hatch to below deck equipment
- Air conditioning /heating 16,000 BTU, dual zone
- Bose Lifestyle® 38 surround sound stereo system, AM/FM/CD/DVD
- TV, flat screen
- Carpet, removable, deep-pile
- Dining table, teak with birds eye maple inlay
- Fabrics and coverings, fine selection throughout
- Icemaker, cabinet in salon
- Interior wood, teak, satin finish
- Latches, positive, cabinet doors and drawers
- Lighting, recessed halogen
- Lighting, indirect, AC and DC
- Mini-blinds, custom, throughout
- Salon windows, fixed, tinted
- Settee, starboard
- Settee, port
- TV, LCD, flat screen, built-in, cable hookup

Galley

- AC duplex outlet/GFI protected
- Cook top, ceramic, two-burner, recessed with Corian® cover
- Corian® countertop with custom Corian® sea rails
- Garbage disposal
- Latches, positive, cabinet doors and drawers
- Microwave/convection oven
- Refrigerator/freezer, Sub-Zero®, 2 drawers, AC
- Storage, compartments and drawers throughout
- Storage, under-galley compartment
- Under cabinet lighting, recessed halogen
- Ventilation fan
- Water gauge

Master Stateroom

- AC duplex outlet with clock/GFI protected
- Adjoining private head with shower stall
- Air conditioning /heating controls 7,000 BTU capacity
- Berths, double, island-style, 5" mattress, bunk cover, shams
- Carpet
- End tables (2), with lamps

- Headliner, vinyl
- Latches, positive, cabinet doors and drawers
- Lighting, recessed halogen
- Lighting, reading, DC
- Locker, hanging, cedar-lined
- Stereo, AM/FM/CD/DVD system, DC
- Storage, under berth, accessed through gas-assisted lift
- TV, flat screen, built-in with cable hook-up

Master Head Compartment

- AC duplex outlet/GFI protected
- Corian® countertop
- Exhaust fan
- Head, Sealand Vacuflush, electric
- Latches, positive, cabinet doors and drawers
- Lighting, recessed halogen
- Lighting, vanity
- Shower, stall, automatic shower sump pump
- Toiletry storage cabinet, Corian® -framed with mirror doors
- Towel rack
- Vanity, with storage cabinet

Forward Stateroom

- AC duplex outlet/GFI protected
- Access to anchor rope/chain locker
- Adjoining head with shower stall
- Air conditioning /heating controls 7,000 BTU capacity
- Berth, double, 5" mattresses, bunk cover, shams
- Foredeck hatch with retractable shade
- Latches, positive, cabinet doors and drawers
- Lighting, recessed halogen, AC and DC
- Lighting, reading, DC
- Storage, locker, hanging, cedar-lined, port
- Storage, compartments and drawers below berth
- Storage, rod locker
- Central Stateroom

Guest Head Compartment

- AC duplex outlet/GFI protected
- Corian® countertop
- Head, Sealand Vacuflush, electric
- Latches, positive, cabinet doors and drawers
- Lighting, recessed halogen, AC and DC
- Lighting, vanity
- Shower stall, automatic sump pump
- Sink, with storage cabinet
- Toiletry storage cabinet, Corian® -framed with sliding mirror doors
- Vanity, with storage cabinet

Aft Guest Stateroom

- 2 single Berths, bunk covers, shams
- Carpet
- Lighting, recessed halogen, AC and DC
- Lighting reading, DC
- Storage, locker, hanging, cedar-lined
- Storage, drawers beneath berth

Electronics

- Radar-Furuno 1954C VX2 12KW 72 mile
- 6' open array antenna
- Furuno GPS/Waas chartplotter
- FurunoBBFF3 Network sounder
- Furuno R199 Transducer
- Furuno RD-30 Digital depth, Temp display.
- ICOM M602 VHF/ Hailer
- Simrad AP 25 autopilot
- ACR spotlight
- ICOMVHF in Salon
- KVH Tracvision M-5 Sat-TV

Optional Equipment

- Cockpit Freezer1 10V
- Distribution Panel for electronics
- Generator 15kw
- Hand Held shower in cockpit
- Teak in lieu of carpet

- TV/DVD in guest stateroom
- Refrigerated Fish box, cockpit
- Bait Tank window
- Electronic Engine gauge package
- Prop smith propellar Installation and removal tool
- Bow Thruster
- Yacht controller, run boat remotely any position on board, use bow thruster, engines and anchor windlass
- Molded Hard Top,4-sided strata glass enclosure, electric teaser reels, outriggers, spreader lights

Disclaimer

While we attempt to display current and accurate data, this listing may not reflect the most recent transactions or may contain occasional data entry errors. Selling agent makes no warranties, express or implied, regarding the content or availability of the products described herein. All inventory listed is subject to availability and prior sale. Please consult selling agent for details. Prices are quoted for the USA only and may not include transportation, taxes, or other applicable charges. Photographs may be representative only and may vary somewhat from the actual items offered for sale. We will not be responsible for inaccurate data obtained from our site. Please check with your local dealer to ensure that you have the latest information available. Information on this web site could include technical inaccuracies or typographical errors. Changes may be periodically made to the information or the products herein. Questions or comments regarding these policies may be directed to website hosting agent.

Exclusions

Owner's personal belongings.

Disclaimer

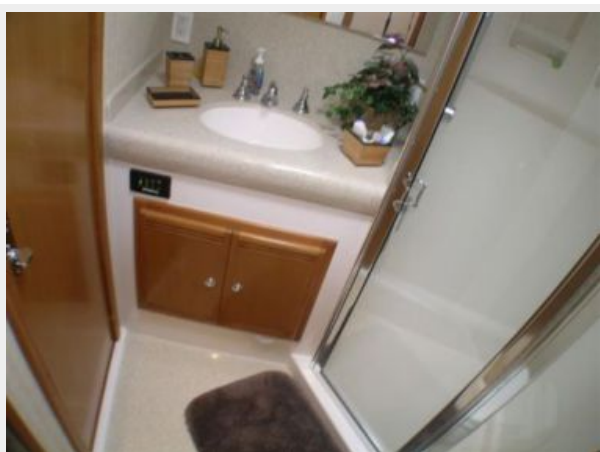
The Company offers the details of this vessel or yacht in good faith but cannot guarantee or warrant the accuracy of this information nor warrant the condition of the vessel. A buyer should instruct his representatives, agents, or his surveyors, to investigate such details as the buyer desires validated. This vessel or yacht is offered subject to prior sale, price change, or withdrawal without notice.

PHOTOS









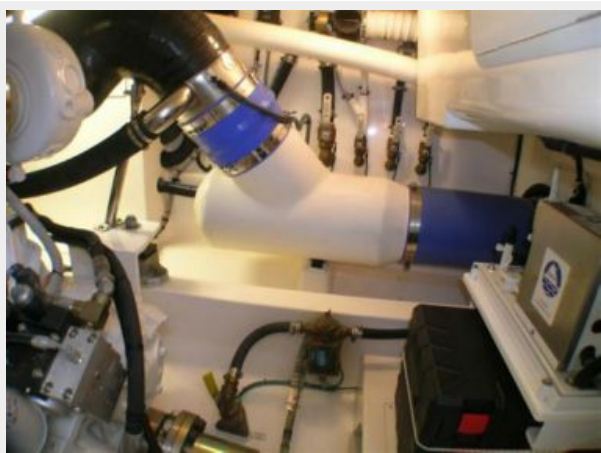
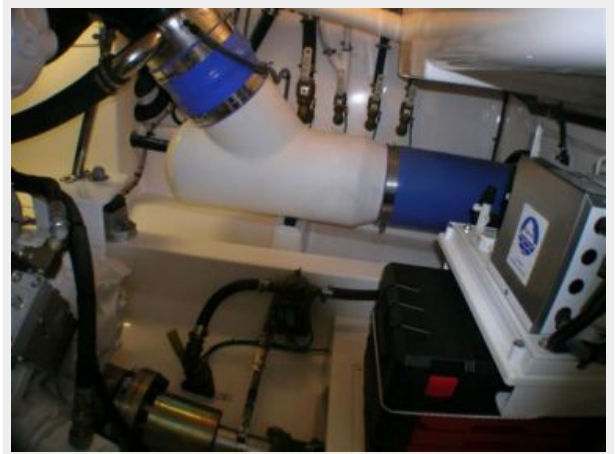


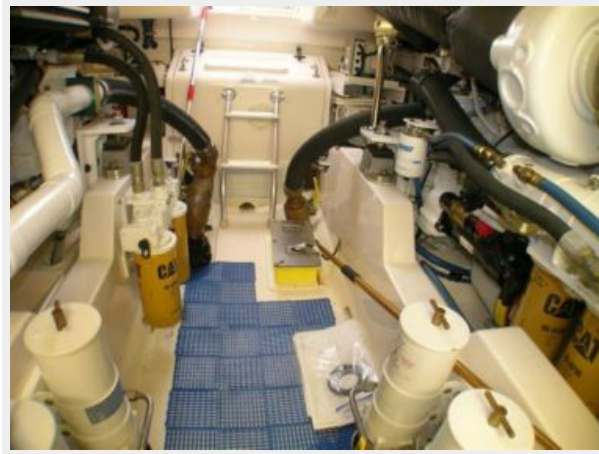












CONTACTS

Andrey Shestakov, leading yacht broker of the sales department of Shestakov Yacht Sales Inc. Shestakov Yacht Sales Inc., the official representative of the Miami/Fort Lauderdale FL headquarters.

Contact details

Email: andrey@shestakovyachtsales.com

Web: shestakovyachtsales.com/en/

Telephones

USA: +1(954)274-4435

Office hours

Monday – Saturday: **9:00 - 21:00** EDT

Sunday: **closed**

Address



Harbour Towne Marina, 850 NE 3rd St,
STE 213, Dania, FL 33004