

YELLOW ROSE — CABO



Судостроитель: CABO

Год постройки: 2007

Модель: Катер для спортивной рыбалки

Цена: **ЦЕНА ЯХТЫ ПО ЗАПРОСУ**

Местонахождение: United States

Длина общая: 48' 0" (14.63m)

Ширина: 15' 8" (4.78m)

Макс. осадка: 4' 0" (1.22m)

Крейс. скорость: 29 Kts. (33 MPH)

Макс. скорость: 34 Kts. (39 MPH)

Купить **Yellow Rose — CABO** а также выбрать подходящую вам яхту из нашего каталога яхт вам поможет опытный яхтенный брокер Андрей Шестаков. На сегодняшний день компания **Shestakov Yacht Sales Inc.** имеет большое количество яхт в собственном списке продаж, а также тесно сотрудничает со всеми крупными яхтенными производителями по всему миру.

Для того чтобы купить яхту **Yellow Rose — CABO** а также проконсультироваться по любому вопросу связанному с покупкой, продажей, чартером яхт позвоните по телефону **+7(918)465-66-44**.

ОГЛАВЛЕНИЕ

ОГЛАВЛЕНИЕ	2
ХАРАКТЕРИСТИКИ	4
Обзор	4
Основная информация	4
Размеры	4
Скорость, вместимость и масса	4
Размещение	4
Корпус и палуба	5
Информация о двигателе	5
ПОДРОБНОЕ ОПИСАНИЕ	6
Hull	6
Deck	6
Cockpit	6
Flybridge	7
Mechanical	7
Electrical	8
Main Cabin	8
Galley	9
Master Stateroom	9
Master Head Compartment	10
Forward Stateroom	10
Guest Head Compartment	10
Aft Guest Stateroom	11
Electronics	11
Optional Equipment	11
Disclaimer	12
Исключения	12
Отказ от ответственности	12

ФОТОГРАФИИ	13
КОНТАКТЫ	24
Контактная информация	24
Телефоны	24
Время работы	24
Адрес	24

ХАРАКТЕРИСТИКИ

Обзор

Yellow Rose is a one owner boat, with 476 hours on its Caterpillar C-18s, with warranty in effect till June 2015 and two more years available. Boat is equipped with bow thruster, New 2013 four-sided enclosure on bridge, yacht controller and many more options. See full listing for more information. Call today for showing.

Основная информация

Тип судна: Катер для спортивной рыбалки

Подкатегория: Convertible

Модельный год: 2007

Год постройки: 2007

Страна: United States

Размеры

Длина общая: 48' 0" (14.63m)

Ширина: 15' 8" (4.78m)

Макс. осадка: 4' 0" (1.22m)

Скорость, вместимость и масса

Крейс. скорость: 29 Kts. (33 MPH)

Крейсерская скорость поворота: 2000 Kts.

Макс. скорость: 34 Kts. (39 MPH)

Макс. скорость поворота: 2359 Kts.

Водоизмещение: 45000 Pounds

Вместимость воды: 100 Gallons

Вместимость сточного бака: 28 Gallons

Объем топливного бака: 1020 Gallons

Размещение

Всего кают: 3

Всего ком. состава: 2

Корпус и палуба

Материал корпуса: Fiberglass

Информация о двигателе

Двигатели: 2

Производитель: Caterpillar

Модель: C-18

Тип двигателя: Inboard

Тип топлива: Diesel

ПОДРОБНОЕ ОПИСАНИЕ

Hull

- Boot striping - choice of colors
- Bottom paint, complete preparation-2 coats epoxy, 2 coats anti-fouling paint; black, standard
- Hull, inside, finished white LP paint
- Molded fiberglass construction with superior ISO/NPG exterior gelcoat finish and premium vinylester resins; biaxial stitched fabric reinforcement; solid fiberglass bottom construction; core construction from chine to sheer (vacuum-bagged)
- Stainless steel rub strip on face of white high-density PVC rub rail
- Trim tabs, fully recessed

Deck

- Anchor roller assembly, custom recessed, stainless steel
- Bow cleats, 12" stainless steel
- Spring line cleats (4), custom
- Stern cleats, 12" stainless steel
- Stern hawse pipes, stainless steel
- Bow pulpit, integral molded fiberglass
- Bow rails, custom, aluminum, East Coast-style
- Deck surface, molded-in, non-skid
- Molded fiberglass using polyester resin, biaxial stitched fabric reinforcement and vacuum-bagged Core-cell construction
- Premium quality molded-in white gelcoat exterior finish
- Windlass, heavy-duty, DC electric, remote at bridge and deck switches

Cockpit

- Access door to engine room with ladder from cockpit
- Aluminum reinforcing plate installed for mounting fighting chair
- Bait prep center - sink, rigging board and tackle storage fitted with custom lid, gas spring, full-length stainless steel piano hinge and custom latch
- Bait tank, 48-gallon, molded into transom with large overboard drain and LED lighting
- Courtesy lighting under gunwales and flybridge overhang
- Fish boxes (2), large capacity, insulated, macerator pump-out system
- Gunwale padding, high-density foam, white vinyl covered

- Hatches, lazarette and fish boxes, heavy-duty, gasketed, drains, gutters, full-length stainless steel piano hinge and custom latch
- Hose and pistol-grip nozzle
- Icebox, starboard, fitted with gasketed lid, gas spring actuator, full-length stainless steel piano hinge and custom latch
- Rod holders (5)
- Scuppers, self-bailing
- Storage, boxes under gunwale with gaff racks
- Transom door with top gate, extreme duty, polished stainless steel hardware
- Washdowns, fresh-and saltwater

Flybridge

- Bench seat, forward of console, cushions, storage and insulated drink box
- Bridge ladder and safety rails to match deck rails, custom welded with 5 rocket launchers
- Compass, with light, flush-mounted
- Configurations, tournament-style
- Electronics console, custom-molded
- Engine instrument panel, custom, electronic display, polished stainless steel
- Fire and bilge high water level alarms, audible
- Helm and companion chairs, Bluewater, pedestal-mounted, adjustable
- Helm wheel, stainless steel
- Palm Beach pod, mounted, single lever electronic controls
- Rocket launchers, bridge rail, (5)
- Storage, lockers, forward
- Storage, cabinet at helm
- Switch panels, custom, stainless steel

Mechanical

- Bilge, aft, white linear polyurethane finish
- Bilge pumps (5), three automatic/manual, two automatic
- Double constant torque stainless steel clamps on engine exhaust hoses
- Double hose clamps on all hose fittings, stainless steel
- Dual engine room circulation fans, AC
- Electric fuel priming pumps
- Electronic controls with trolling valves, engine synchronizer and backup
- Emergency bilge pump diverter valve on one main engine
- Engine alarm system
- Engine room, white gelcoat finished
- Engine room blowers (2), DC
- Engine room sound insulation, high density barrier/foam

- Fire extinguishing system, manual/automatic
- Freshwater cooling, main engines
- Freshwater hose bib
- Freshwater pump, AC, with backup DC pump
- Fuel filters, with water separators, main engines and generator, large capacity
- Fuel lines, metal braided, fire-retardant
- Fuel tank, fiberglass, fire-retardant
- High water bilge alarms (3)
- Holding tank, 28 gal., with monitor, macerator and dockside discharge
- Mufflers, fiberglass, backwash surge tube
- Oil change system, main engines, generator and transmission
- Propeller shafts, double taper, couplers, high-strength stainless steel
- Propellers, Nibral
- Rudders, bronze, high-strength, with high load bearings (low friction, precise control)
- Sea cocks, UL approved for marine application bronze, fitted on all thru-hulls below waterline
- Power Steering system, hydraulic, Teleflex-Seastar
- Stuffing boxes, drip-less lip seal type
- Water heater, 11-gallon, AC, stainless steel
- Water intake scoops, bronze, high speed, with integral seawater strainers

Electrical

- 50' shore cord, Glendinning Cable Master, 220V, 50-amp
- Battery charger, automatic with thermal cut out
- Battery paralleling, automatic, with manual switch at helm
- Battery on/off switches, vapor-proof
- Bonding system with transom zinc plate
- Circuit breaker protection throughout
- Distribution panel, custom, AC electrical, with line voltage and load meter, reverse polarity light
- Distribution panel, custom, DC electrical, with battery voltage and load meter
- Electronic supply at helm, 24VDC and 12VDC at 50-amp
- Horn, dual air trumpet - uninstalled
- Lights, engine room, AC and DC
- Lights, interior, AC and DC
- Lights, navigation, international, uninstalled for future mounting on arch, hardtop or tower
- Receptacles, GFI protected, throughout boat
- Washer/dryer combination unit

Main Cabin

- AC duplex outlets/GFI protected
- Access hatch to below deck equipment
- Air conditioning /heating 16,000 BTU, dual zone
- Bose Lifestyle® 38 surround sound stereo system, AM/FM/CD/DVD
- TV, flat screen
- Carpet, removable, deep-pile
- Dining table, teak with birds eye maple inlay
- Fabrics and coverings, fine selection throughout
- Icemaker, cabinet in salon
- Interior wood, teak, satin finish
- Latches, positive, cabinet doors and drawers
- Lighting, recessed halogen
- Lighting, indirect, AC and DC
- Mini-blinds, custom, throughout
- Salon windows, fixed, tinted
- Settee, starboard
- Settee, port
- TV, LCD, flat screen, built-in, cable hookup

Galley

- AC duplex outlet/GFI protected
- Cook top, ceramic, two-burner, recessed with Corian® cover
- Corian® countertop with custom Corian® sea rails
- Garbage disposal
- Latches, positive, cabinet doors and drawers
- Microwave/convection oven
- Refrigerator/freezer, Sub-Zero®, 2 drawers, AC
- Storage, compartments and drawers throughout
- Storage, under-galley compartment
- Under cabinet lighting, recessed halogen
- Ventilation fan
- Water gauge

Master Stateroom

- AC duplex outlet with clock/GFI protected
- Adjoining private head with shower stall
- Air conditioning /heating controls 7,000 BTU capacity
- Berths, double, island-style, 5" mattress, bunk cover, shams
- Carpet
- End tables (2), with lamps

- Headliner, vinyl
- Latches, positive, cabinet doors and drawers
- Lighting, recessed halogen
- Lighting, reading, DC
- Locker, hanging, cedar-lined
- Stereo, AM/FM/CD/DVD system, DC
- Storage, under berth, accessed through gas-assisted lift
- TV, flat screen, built-in with cable hook-up

Master Head Compartment

- AC duplex outlet/GFI protected
- Corian® countertop
- Exhaust fan
- Head, Sealand Vacuflush, electric
- Latches, positive, cabinet doors and drawers
- Lighting, recessed halogen
- Lighting, vanity
- Shower, stall, automatic shower sump pump
- Toiletry storage cabinet, Corian® -framed with mirror doors
- Towel rack
- Vanity, with storage cabinet

Forward Stateroom

- AC duplex outlet/GFI protected
- Access to anchor rope/chain locker
- Adjoining head with shower stall
- Air conditioning /heating controls 7,000 BTU capacity
- Berth, double, 5" mattresses, bunk cover, shams
- Foredeck hatch with retractable shade
- Latches, positive, cabinet doors and drawers
- Lighting, recessed halogen, AC and DC
- Lighting, reading, DC
- Storage, locker, hanging, cedar-lined, port
- Storage, compartments and drawers below berth
- Storage, rod locker
- Central Stateroom

Guest Head Compartment

- AC duplex outlet/GFI protected
- Corian® countertop
- Head, Sealand Vacuflush, electric
- Latches, positive, cabinet doors and drawers
- Lighting, recessed halogen, AC and DC
- Lighting, vanity
- Shower stall, automatic sump pump
- Sink, with storage cabinet
- Toiletry storage cabinet, Corian® -framed with sliding mirror doors
- Vanity, with storage cabinet

Aft Guest Stateroom

- 2 single Berths, bunk covers, shams
- Carpet
- Lighting, recessed halogen, AC and DC
- Lighting reading, DC
- Storage, locker, hanging, cedar-lined
- Storage, drawers beneath berth

Electronics

- Radar-Furuno 1954C VX2 12KW 72 mile
- 6' open array antenna
- Furuno GPS/Waas chartplotter
- FurunoBBFF3 Network sounder
- Furuno R199 Transducer
- Furuno RD-30 Digital depth, Temp display.
- ICOM M602 VHF/ Hailer
- Simrad AP 25 autopilot
- ACR spotlight
- ICOMVHF in Salon
- KVH Tracvision M-5 Sat-TV

Optional Equipment

- Cockpit Freezer1 10V
- Distribution Panel for electronics
- Generator 15kw
- Hand Held shower in cockpit
- Teak in lieu of carpet

- TV/DVD in guest stateroom
- Refrigerated Fish box, cockpit
- Bait Tank window
- Electronic Engine gauge package
- Prop smith propellar Installation and removal tool
- Bow Thruster
- Yacht controller, run boat remotely any position on board, use bow thruster, engines and anchor windlass
- Molded Hard Top,4-sided strata glass enclosure, electric teaser reels, outriggers, spreader lights

Disclaimer

While we attempt to display current and accurate data, this listing may not reflect the most recent transactions or may contain occasional data entry errors. Selling agent makes no warranties, express or implied, regarding the content or availability of the products described herein. All inventory listed is subject to availability and prior sale. Please consult selling agent for details. Prices are quoted for the USA only and may not include transportation, taxes, or other applicable charges. Photographs may be representative only and may vary somewhat from the actual items offered for sale. We will not be responsible for inaccurate data obtained from our site. Please check with your local dealer to ensure that you have the latest information available. Information on this web site could include technical inaccuracies or typographical errors. Changes may be periodically made to the information or the products herein. Questions or comments regarding these policies may be directed to website hosting agent.

Исключения

При продаже яхты исключаются личные вещи владельца.

Отказ от ответственности

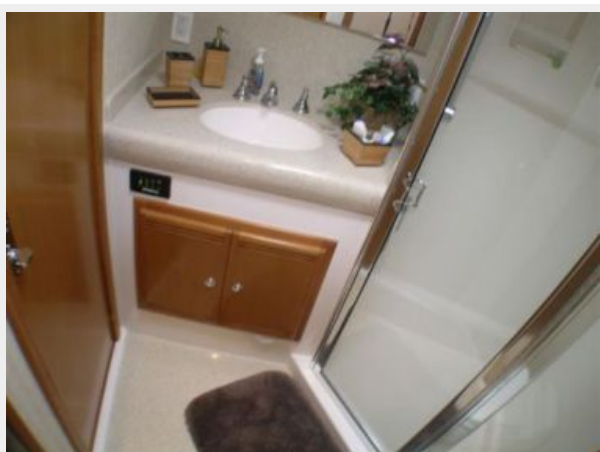
Компания предоставляет описание судна или яхты добросовестно, но не может гарантировать точность этой информации, а также не ручается за техническое состояние. Покупатель должен проинструктировать своих агентов или оценщиков исследовать представленную информацию более подробно, по собственному желанию. Продажа судна или яхты, изменение цены или снятие с продажи будет происходить без предварительного уведомления.

ФОТОГРАФИИ









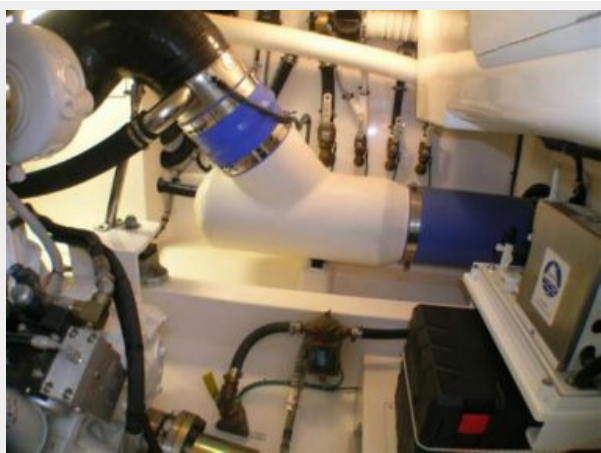
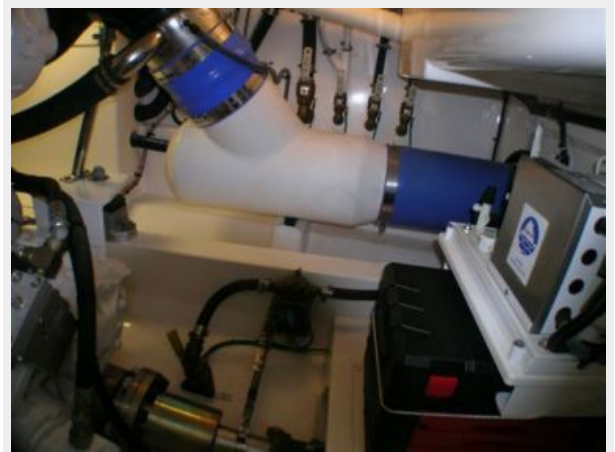


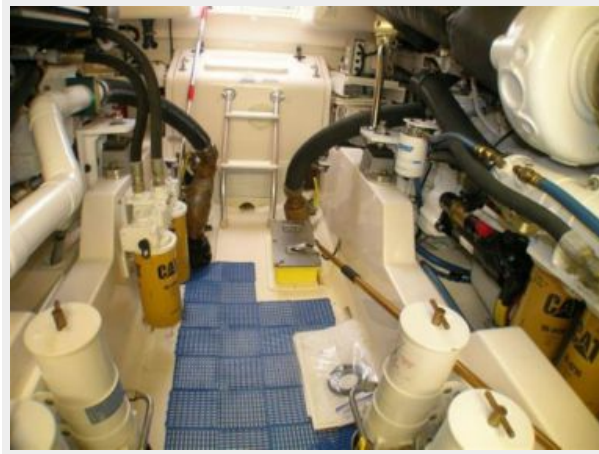












КОНТАКТЫ

Андрей Шестаков (Andrey Shestakov) – ведущий яхтенный брокер отдела продаж яхт и судов компании Shestakov Yacht Sales Inc. Официальный представитель Shestakov Yacht Sales Inc. для русскоговорящих клиентов в центральном офисе компании в Майами/Форт Лодердейл/Флорида/США.

Контактная информация

Email: andrey@shestakovyachtsales.com

Web: shestakovyachtsales.com

Телефоны

Краснодарский край: **+7(918)465-66-44**

США, Майами, Флорида: **+1(954)274-4435**

Время работы

Понедельник – Суббота: **9:00 - 21:00**
EDT

Воскресенье: **Закрито**

Адрес



Harbour Towne Marina, 850 NE 3rd St,
STE 213, Dania, FL 33004