

## 52' BLUEWATER YACHTS TURBO DIESEL — BLUEWATER YACHTS



**Судостроитель:** [BLUEWATER YACHTS](#)

**Год постройки:** 1997

**Модель:** Плавающий дом

**Цена:** ЦЕНА ЯХТЫ ПО ЗАПРОСУ

**Местонахождение:** United States

**Длина общая:** 52' 0" (15.85m)

**Ширина:** 14' 6" (4.42m)

**Макс. осадка:** 1' 11" (0.58m)

**Крейс. скорость:** 19 Kts. (22 MPH)

Купить 52' Bluewater Yachts TURBO DIESEL — BLUEWATER YACHTS а также выбрать подходящую вам яхту из нашего каталога яхт вам поможет опытный яхтенный брокер Андрей Шестаков. На сегодняшний день компания Shestakov Yacht Sales Inc. имеет большое количество яхт в собственном списке продаж, а также тесно сотрудничает со всеми крупными яхтенными производителями по всему миру.

Для того чтобы купить яхту 52' Bluewater Yachts TURBO DIESEL — BLUEWATER YACHTS а также проконсультироваться по любому вопросу связанному с покупкой, продажей, чартером яхт позвоните по телефону **+7(918)465-66-44**.

# ОГЛАВЛЕНИЕ

ОГЛАВЛЕНИЕ	2
ХАРАКТЕРИСТИКИ	4
Обзор	4
Основная информация	4
Размеры	4
Скорость, вместимость и масса	5
Корпус и палуба	5
Информация о двигателе	5
ПОДРОБНОЕ ОПИСАНИЕ	6
Accommodations	6
Master Cabin	6
Guest Cabin	6
Vessel Walk Through	7
Flybridge	8
Galley	8
Electrical & Electronics	8
Mechanical & Engines	9
Hull & Deck	9
Comments	10
Disclaimer	10
Исключения	10
Отказ от ответственности	10
ФОТОГРАФИИ	11
Salon	11
Dinette	11
Galley	11
Galley-2	11
Lower Helm	11

Master Stateroom	11
Master w/Door to Aft Deck	12
Master Stateroom - Storage	12
Master Head - w/Tub shower	12
Forward Stateroom	12
Forward Head w/shower	13
Washer/Dryer	13
Bow w Forward Boarding Ladder	13
Flybridge Helm Seating	13
Upper Bridge Helm	13
Forward Bridge Deck Seating	13
Flybridge Seating	14
Flybridge	14
Hard Top	14
Engine	14
Generator	14
Bar-B on the Aft Deck	14
Profile	15
On the Hard	15
On the Hard -2	15
Tender	15
Tender on Heavy Duty Lift	15
CRUISING	15
КОНТАКТЫ	16
Контактная информация	16
Телефоны	16
Время работы	16
Адрес	16

# ХАРАКТЕРИСТИКИ

## Обзор

SHOWS LIKE A NEW YACHT - FULLY AIR CONDITIONED - PROFESSIONALLY MAINTAINED - "TURN KEY VESSEL" Extremely Spacious and Comfortable Yacht - Ideal for Cruising - Live-a Board - or Vacation Home Large Salon with Dining - Living Room Seating - and Galley Areas Well Lit - With Large Window Areas Throughout Main Level - Offers Open Views to the Outside from All Areas of the Interior 23" Shallow Draft Allows this Vessel to Enter Waters Not Accessible to Traditional Yachts It's Size. Perfect cruiser best describes this very versatile motor yacht. Perfect for shallow water cruising. Huge covered decks, spacious Salon, gorgeous Master and a Gourmet Galley! This beautiful yacht has it all... hydraulic swim/dinghy platform, great electronics, diesel reliability and safety. This vessel has been very lightly used, as evidenced by her LOW ENGINE HOURS - But always well maintained - MUST BE SEEN - MAKE AN OFFER ONLY DIESEL POWERED BLUEWATER YACHT IN HER SIZE RANGE IN THE SOUTHERN UNITED STATES

## Основная информация

Тип судна: Плавающий дом

Модельный год: 1997

Год постройки: 1997

Страна: United States

Открытая палуба мостика: Да

## Размеры

Длина общая: 52' 0" (15.85m)

Длина по ватерлинии: 44' 3" (13.49m)

Ширина: 14' 6" (4.42m)

Макс. осадка: 1' 11" (0.58m)

Трапы: 17' 0" (5.18m)

## Скорость, вместимость и масса

---

**Крейс. скорость:** 19 Kts. (22 MPH)

**Водоизмещение:** 32500 Pounds

**Вместимость воды:** 136 Gallons

**Вместимость сточного бака:** 60 Gallons

**Объем топливного бака:** 375 Gallons

## Корпус и палуба

---

**Материал корпуса:** Fiberglass

## Информация о двигателе

---

**Двигатели:** 2

**Производитель:** Cummins

**Тип двигателя:** Inboard

**Тип топлива:** Diesel

---

# ПОДРОБНОЕ ОПИСАНИЕ

---

## Accommodations

---

Spacious 2 stateroom layout with master aft, and guest cabin forward Additional sleeper sofa in Salon brings sleeping accommodations to (6)

3 Zone reverse cycle air conditioning with 48,000 BTU provides complete cooling comfort or heat as needed

- All Air conditioning systems upgraded 2006- (1) repaired , (2) new replacement compressors & controls
- New mattresses in both staterooms (Fall 2008)
- new bedding and co-ordinated curtains
- NEW Hot Water Heater (2008)

## Master Cabin

---

Master stateroom is full beam and occupies aft section of the main deck. Stateroom contains an queen island berth and numerous storage cabinets and lockers. This stateroom also contains a private en-suite head with full size tub and shower. Sliding doors provide access to the aft covered cockpit.

- Master Stateroom Aft
- European maple High Gloss Cabinetry
- Queen Walk-Around Bed
- Night Stand w/Storage
- NEW Designer Window Treatments
- NEW Custom Bedding
- NEW Designer bath curtain
- Cedar Lined Hanging Locker w/Light
- Full Head w/ FULL SIZE tub & Shower
- 110v Lights/GFI Receptacles
- 12v Grey Water Shower Box w/ Central Drain System
- Telephone jack w/intercom amplifier
- Recessed lighting and "wall wash" lights

## Guest Cabin

---

Guest cabin is forward - 2 steps down from main deck. There is also ample storage, plus a full head & shower -

- Queen Bed
- European maple High Gloss Cabinetry
- Under-Bed Storage
- NEW Designer Window Treatments
- NEW Designer bath curtain
- NEW Custom Bedding
- Recessed lighting and "wall wash" lights
- HUGE Cedar lined hanging locker w/light
- Bow Chain Locker (self draining w/storage)
- Deck Hatch to Bow w/ shaded window
- Full Head w/ Ex Large shower

## Vessel Walk Through

---

There is a "great room" effect when entering the combination Salon - Galley - Dinette area. A lower Helm station is to Starboard in the forward section of the Main Saloon. Master stateroom and head w/Full Size tub/shower occupy the aft section of the vessel, and the guest stateroom w/head and shower is forward. Interior is bright and airy and well lit from the over sized windows.

- Upper and Lower helm stations
- 37" Flat screen TV in Salon can be viewed from all angles
- TV's w/main VD and all switching cabinet for all services in Salon and both Staterooms
- Recessed lighting and "wall wash" lights
- Light Ash colored woodwork throughout - Lends a bright airy feel
- Glass top dining table & decorator upholstered chairs
- Numerous closets, lockers and storage spaces
- Cloths Washer and Dryer
- New complete interior decor and window treatments in Salon (2009)
- Sliding glass doors to covered rear deck
- Side double Glass door from Starboard side deck to Salon
- Covered aft deck on Main level
- Comfortable leather sleeper sofa in Salon (sleeps 2)
- (3) Stairways to Flybridge deck - One from aft deck, one from each side deck
- Central vacuum cleaning system
- Flex Steel leather recliner, and over sized Flex Steel leather sofa/bed
- Free standing humidifier

---

## Flybridge

---

- Seating for 14 adults on Fly-bridge
- Cruise and dine with 25 guests or more comfortably
- New custom cushions & covers
- Bimini cover
- Ice maker
- Bar w/Automatic beverage dispenser & sink
- Bridge hardtop w/enclosure - forward
- Under the hardtop - (3) person Helm - Plus (3) person companion seat
- Telephone jack w/intercom amplifier

---

## Galley

---

- Corian Surfaces on all counter tops
- Full size Dish Washer
- Full size upright refrigerator/freezer
- Garbage compactor
- Electric flat cook-top stove
- Microwave CONVECTION oven
- Double sink w/removable cover
- Extra large cabinets and cupboards
- Telephone jack w/intercom amplifier
- Reaccessed lighting and "wall wash" lights

---

## Electrical & Electronics

---

- (4) Battery charging system & (4) new batteries installed - NEW 2008
- Intercom & Phones
- Security alarm system
- Stereo/CD system with speakers throughout vessel -
- TV, Dish network, and DSL input jacks
- (3) TV's including 37' Flat Screen in Saloon
- 50 DISC CD Stereo in Salon
- Stereo w/CD player on bridge
- Front headlights Plus spotlight on upper deck - dual station remote spot
- Recessed lighting in interior
- Telephone/TV/shore Power & Shore Water Inlets (Bow)
- AC/DC Breaker Panel & Distribution Panel
- ABYC Standards Wiring System
- Power "flip up/down" instrument protective hard cover on Bridge
- Radar - Raytheon R41



- New Gamin 2010 GPS/Sounder w/Sonar
- (2) VHF radios - dual station
- Raypilot autopilot
- Raychart 601 XX and V850 underwater color sounder
- Raymarine ST60 Tridata - Dual station
- Sony - Rear View camera

## Mechanical & Engines

---

Engines Recently Tuned & Serviced - Cooling System flushed - Heat Exchanger System Replaced by Cummins Power, Ft. Myers

- twin 370 HP CUMMINS Diesels (790 hours) - (less than 200 hours since major service)  
Low Burn rate averages 1 MPG
- Electronic shifting and throttle system
- 12.5 KW factory rebuilt Westerbeke generator installed - 28 hours ( replaced original 8.5 genset)
- Auto fire suppression system
- Free standing dehumidifier added
- Hydraulic swim platform - Heavy duty tender lift

## Hull & Deck

---

Her Low Profile - Sleek hull has been designed for Intercoastal and Offshore waters. Shallow draft - 23" - and recessed props allow this yacht to be beached. Fold-up ladder at the bow allows for disembarking at a beach

- Propellers are protected from groundings by being recessed into the hull
- Hardtop over the flybridge helm - Plus large Bimini Aft of the helm
- Ample room in aft cockpit for table and chairs
- There is a "rebuilt" windlass at the bow.
- 210 feet heavy duty anchor chain
- Fold-up ladder at the bow for disembarking at a beach
- New Boat lift - extra heavy duty - on transom for large tender - Stainless steel and Aluminum(original cost \$20,000)
- 14' Twin V tender w/Bimini and 40 HP Yamaha 4 stroke engine ( 150 hours)(not included - negotiable)
- Tender fresh water flush from tank on aft deck
- Bar-B-Que on aft deck
- Shower on aft deck
- Hauled and bottom painted 2009 (3 coats)

- Polyethylene Wast Tank w/Pump Out - NEW Galley Maid Pre-Macerator pump
- Bronze Thru-Hulls
- Molded Non-Skid Deck
- Anodized Aluminum Tinted Windows w/ Safety Glass

## Comments

---

This is a 2 owner vessel. Current owner has professionally maintained the vessel and has done some substantial upgrades. - All systems have been upgraded or replaced to meet the new owner's standards. Exceptionally clean, and "TURN KEY".

## Disclaimer

---

The Company offers the details of this vessel in good faith but cannot guarantee or warrant the accuracy of this information nor warrant the condition of the vessel. A buyer should instruct his agents, or his surveyors, to investigate such details as the buyer desires validated. This vessel is offered subject to prior sale, price change, or withdrawal without notice.

## Исключения

---

При продаже яхты исключаются личные вещи владельца.

## Отказ от ответственности

---

Компания предоставляет описание судна или яхты добросовестно, но не может гарантировать точность этой информации, а также не ручается за техническое состояние. Покупатель должен проинструктировать своих агентов или оценщиков исследовать представленную информацию более подробно, по собственному желанию. Продажа судна или яхты, изменение цены или снятие с продажи будет происходить без предварительного уведомления.

# ФОТОГРАФИИ

**Salon**



**Dinette**



**Galley**



**Galley-2**



**Lower Helm**



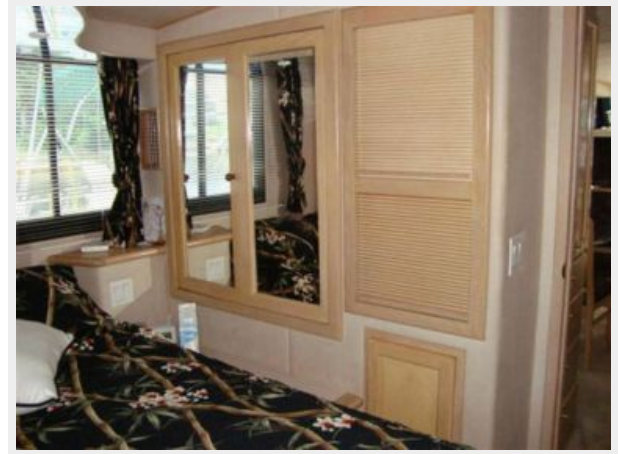
**Master Stateroom**



**Master w/Door to Aft Deck**



**Master Stateroom - Storage**



**Master Head - w/Tub shower**



**Forward Stateroom**



**Forward Head w/shower**



**Washer/Dryer**



**Bow w Forward Boarding Ladder**



**Flybridge Helm Seating**



**Upper Bridge Helm**



**Forward Bridge Deck Seating**



**Flybridge Seating**



**Flybridge**



**Hard Top**



**Engine**



**Generator**



**Bar-B on the Aft Deck**



**Profile**



**On the Hard**



**On the Hard -2**



**Tender**



**Tender on Heavy Duty Lift**



**CRUISING**



# КОНТАКТЫ

---

Андрей Шестаков (Andrey Shestakov) – ведущий яхтенный брокер отдела продаж яхт и судов компании Shestakov Yacht Sales Inc. Официальный представитель Shestakov Yacht Sales Inc. для русскоговорящих клиентов в центральном офисе компании в Майами/Форт Лодердейл/Флорида/США.

## Контактная информация

---

Email: [andrey@shestakovyachtsales.com](mailto:andrey@shestakovyachtsales.com)

Web: [shestakovyachtsales.com](http://shestakovyachtsales.com)

## Телефоны

---

Краснодарский край: **+7(918)465-66-44**

США, Майами, Флорида: **+1(954)274-4435**

## Время работы

---

Понедельник – Суббота: **9:00 - 21:00**  
EDT

Воскресенье: **Закрито**

## Адрес

---



Harbour Towne Marina, 850 NE 3rd St,  
STE 213, Dania, FL 33004