

NISI 2400 - N1 — TRICON MARINE



Builder: [Tricon Marine](#)

Year Built: 2011

Model: Motor Yacht

Price: PRICE ON APPLICATION

Location: United States

LOA: 78' 0" (23.77m)

Beam: 19' 1" (5.82m)

Max Draft: 3' 6" (1.07m)

Cruise Speed: 23 Kts. (26 MPH)

Max Speed: 28 Kts. (32 MPH)

Our experienced yacht broker, Andrey Shestakov, will help you choose and buy a yacht that best suits your needs NISI 2400 - N1 — Tricon Marine from our catalogue. Presently, at Shestakov Yacht Sales Inc., we have a wide variety of yachts available on our sale's list. We also work in close contact with all the big yacht manufacturers from all over the world.

If you would like to buy a yacht NISI 2400 - N1 — Tricon Marine or would like help answering any questions concerning purchasing, selling or chartering a yacht, please call +1(954)274-4435

TABLE OF CONTENTS

TABLE OF CONTENTS	2
SPECIFICATIONS	3
Overview	3
Basic Information	3
Dimensions	3
Speed, Capacities and Weight	3
Accommodations	4
Hull and Deck Information	4
Engine Information	4
DETAILED INFORMATION	5
Accommodations	5
Engineering Innovations	5
NISI Style	6
Exclusions	6
Disclaimer	6
PHOTOS	8
Heli shoot	12
CONTACTS	13
Contact details	13
Telephones	13
Office hours	13
Address	13

SPECIFICATIONS

Overview

One of the most awarded yacht ever...featured everywhere from Robb Report to Playboy! What you need to know: NISI 2400 (78 feet - length over all) is the first, and, currently, only yacht under 24-meters that is available classed to RINA + MCA commercial service code (Read "Superyacht grade engineering and materials"). With the Zeus pods propulsion set up, she comfortably accommodates up to 8 guests in four en-suite cabins plus separate crew quarters. Ward Setzer pedigree, built to the highest standards and dripping with sex appeal, meet **NISI**.

Basic Information

Category: Motor Yacht

Sub Category: Flushdeck

Model Year: 2011

Year Built: 2011

Country: United States

Fly Bridge: Yes

Cockpit: Yes

Dimensions

LOA: 78' 0" (23.77m)

LWL: 74' 0" (22.56m)

Beam: 19' 1" (5.82m)

Max Draft: 3' 6" (1.07m)

Speed, Capacities and Weight

Cruise Speed: 23 Kts. (26 MPH)

Max Speed: 28 Kts. (32 MPH)

Displacement: 81230 Pounds

Gross Tonnage: 37 Pounds

Water Capacity: 558 Gallons

Holding Tank: 400 Gallons

Fuel Capacity: 1407 Gallons

Accommodations

Total Cabins: 4

Sleeps: 8

Total Heads: 4

Crew Cabin: 1

Crew Sleeps: 2

Crew Heads: 1

Hull and Deck Information

Hull Material: Kevlar Composite

Exterior Designer: Tricon Marine & Setzer
Design Group

Engine Information

Engines: 3

Manufacturer: Cummins

Model: QSB 8.3

Engine Type: Inboard

Fuel Type: Diesel

DETAILED INFORMATION

Accommodations

NISI highlights the fusion of exterior and interior elements that does not sacrifice comfort nor luxury for simplicity and convenience. The expansive main deck features a covered cockpit, whose teak deck flows continuous through the entire length of the salon and galley, uniting exterior and interior spaces with the breezy feeling of a quaint loft in Provence. Skylights above the helm and galley, with large panoramic frameless windows throughout, connect those aboard with the ever changing landscape of sea and sky. Fore and aft, relaxed South Beach sun decks afford lounging for friends and family.

Accommodations below deck are simply beautiful and instantly comfortable. Four staterooms, each with an en-suite head, enjoy natural light. The fullbeam master stateroom features a magnificent 6 panel portal and sits amidship to afford the greatest comfort to the Master of the boat. The VIP suite in the forecabin serves as premium guest quarters, which benefits from special consideration that has been afforded to this area. At the stern is a tender garage with a large powered transom door for convenient deployment. Crew will appreciate their well appointed and comfortable sleeping quarters.

Capping the main deck is a secure observation deck with additional sun loungers and a second command station. She affords ample seating and clean lines for open air cruising. Cutting edge performance and simplicity of use that reduce or eliminate the need for full-time crew are core build value elements.

Engineering Innovations

NISI, the only yacht in the world under 24-meters built to RINA Charter Class + MCA Commercial (MGN280) certification.

The advanced composite Kevlar hull is independently tested and certified to exceed class society requirements.

Systems are fitted to luxury superyacht and commercial standards using certified materials and equipment. All water, fuel, fire-fighting, emergency bilge, and hydraulic systems are fitted entirely with metal plumbing. Her engine room is encased with aerospace insulation, tested to 1,000 °F

(538°C), to control heat from reaching guest quarters in the event of a fire for a minimum of 30 minutes.

Salon and other floors are floated with added acoustic insulation. The entire interior forward section of the hull along her chines and waterline is coated with advanced sound deadening material that further reduces the noise of water-slap, while underway and at anchor. NISI exceeds the highest level of safety standards and engineered quality.

NISI Style

An attractive blend of legendary style, sophisticated simplicity and versatility that is solitary in her class.

NISI seamlessly unites the lines of the past with the shape of the future. She's capable of turning heads everywhere she goes. She's an instant modern classic that exudes charm. Beneath the surface, she's fully kitted out with today's state of the art technology, combining outstanding performance and handling with luxury and comfort.

NISI is crafted on a limited production basis in three distinct models, or else custom-built to a length tailored to suit your personal tastes and preferences. Her plumb bow, stainless steel stanchions and life lines, and her observation deck atop a covered wheelhouse cloak 21st century engineering: a wave-piercing hull, pod propulsion, stabilizers and a cutting-edge Skyhook, an innovative station-keeping function that is the first of its kind in the recreational marine industry.

NISI defines superior refinement. You don't settle for less.

Exclusions

Owner's personal belongings.

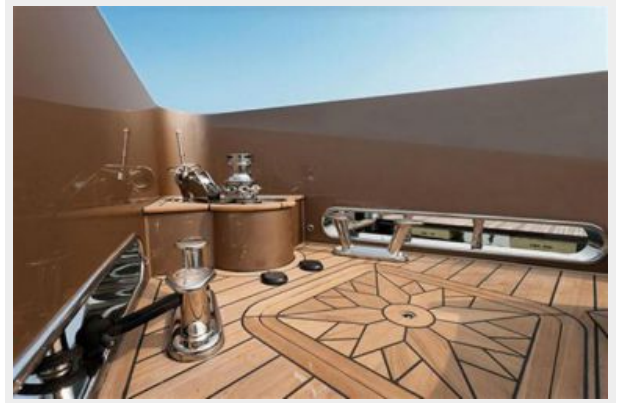
Disclaimer

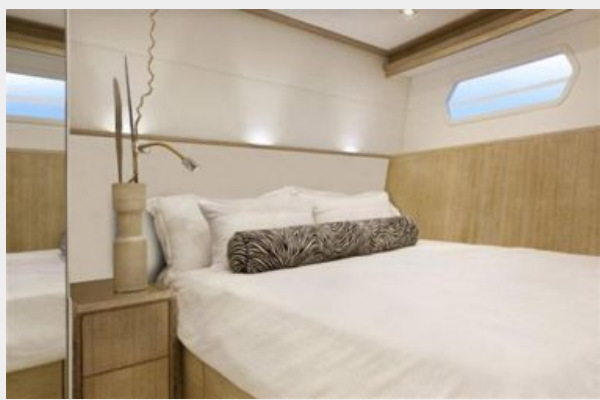
The Company offers the details of this vessel or yacht in good faith but cannot guarantee or warrant the accuracy of this information nor warrant the condition of the vessel. A buyer should instruct his representatives, agents, or his surveyors, to investigate such details as the buyer

desires validated. This vessel or yacht is offered subject to prior sale, price change, or withdrawal without notice.

PHOTOS









Heli shoot



CONTACTS

Andrey Shestakov, leading yacht broker of the sales department of Shestakov Yacht Sales Inc. Shestakov Yacht Sales Inc., the official representative of the Miami/Fort Lauderdale FL headquarters.

Contact details

Email: andrey@shestakovyachtsales.com

Web: shestakovyachtsales.com/en/

Telephones

USA: +1(954)274-4435

Office hours

Monday – Saturday: **9:00 - 21:00** EDT

Sunday: **closed**

Address



Harbour Towne Marina, 850 NE 3rd St,
STE 213, Dania, FL 33004