

CURVELLE QUARANTA — CURVELLE



Судостроитель: CURVELLE

Модель: Катамаран

Длина общая: 111' 11" (34.1mm)

Мин. осадка: 7' 7" (2.3mm)

Крейс. скорость: 17 Knots Kts. (20 MPH)

Макс. скорость: 20 Knots Kts. (23 MPH)

Купить **Curvelle quaranta — CURVELLE** а также выбрать подходящую вам яхту из нашего **каталога яхт** вам поможет опытный яхтенный брокер Андрей Шестаков. На сегодняшний день компания **Shestakov Yacht Sales Inc.** имеет большое количество яхт в **собственном списке продаж**, а также тесно сотрудничает со всеми крупными **яхтенными производителями** по всему миру.

Для того чтобы купить яхту **Curvelle quaranta — CURVELLE** а также проконсультироваться по любому вопросу связанному с покупкой, продажей, чартером яхт позвоните по телефону **+7(918)465-66-44**.

ОГЛАВЛЕНИЕ

ОГЛАВЛЕНИЕ	2
ХАРАКТЕРИСТИКИ	4
Обзор	4
Основная информация	5
Размеры	5
Скорость, вместимость и масса	5
Размещение	6
Корпус и палуба	6
Информация о двигателе	6
ФОТОГРАФИИ	7
guest cabin in suite configuration	7
stern profile	7
guest cabin in suite configuration	7
bow	7
stairs to main deck	7
wheelhouse	7
master cabin in double/suite configuration	8
stairs to saloon deck	8
master cabin in double/suite configuration	8
stern platform down for tender launch	8
top deck	8
guest cabin in double configuration	8
bathroom feature	9
top deck	9
stern platform down for tender launch	9
top deck	9
stern platform down for tender launch	9
tender storage underway	9

stern platform down for tender launch	10
dining saloon from deck	10
dining saloon	10
adjustable dining table for 12	10
saloon	10
saloon	10
master cabin bathroom	11
guest cabin in twin configuration	11
Foredeck	11
1 of 2 engine rooms	11
top deck	11
Quaranta Kos Greece	11
КОНТАКТЫ	12
Контактная информация	12
Телефоны	12
Время работы	12
Адрес	12

ХАРАКТЕРИСТИКИ

Обзор

This eight award winning catamaran superyacht features six double cabins all on the main deck, with flexible cabin arrangements and each with a huge window. The saloon, dining room, bridge and aft deck are on the deck above. The top deck offers a Jacuzzi, bar and additional dining area for twelve. With “Best Concept Yacht under 50m” awarded in 2011 (during construction) and seven more awards in 2013- 2015 since launching, “quaranta” has been the proud winner of eight prestigious awards including a World Superyacht Neptune Trophy, INTERNATIONAL SUPERYACHT SOCIETY "Best Power 24m - 40, THE GERMAN AWARD and Red Dot awards. Although the length overall is 111ft (34.1m) the space on board for guests is comparable with a 130ft performance mono-hull like a Princess or Westport

The quaranta is all about flexibility. The cabin’s insulated sliding walls can be opened or closed, any of the beds can be separate singles or together as doubles. For extra large suites the beds are turned into sofas and sliding walls open to turn two cabins into one extra large suite with sitting room and his and hers bathrooms. In this way the six double cabins can be swiftly changed (by the crew) to three suites or a combination of twin/double/suite cabins. (over twenty layout choices on the same yacht are possible). The Curvelle **quaranta** has a flexible layout that can be reconfigured into a choice of over twenty different guest cabin arrangements by the crew and on a moment’s notice.

The forward guest stateroom is nine meters wide and the center guest cabins twelve meters wide. Each guest stateroom has a huge window of about 2.70 meter wide and 1.0 meter high.

Six staterooms with twin single beds configuration, each with a bathroom en-suite.

All the staterooms have a flexible layout and can be changed to suit the requirements of the owner or charter party. Also if for example if the owner desires to change one the staterooms into a gym, then the beds can be easily removed (and stored ashore) and replaced by gym equipment.

The Curvelle **quaranta** has a flexible layout that can be reconfigured into a choice of over twenty different guest cabin arrangements by the crew and on a moment’s notice.

Three guest suites, each with a private sitting room and his and hers bathrooms. The forward guest stateroom is nine meters wide and the center guest cabins twelve meters wide.

The multifunctional hydraulic lift platform at the stern, takes the tender when cruising

and lowers it gently down to the water. It can be lowered to 85cm below the water which makes it **ideal for launching a mini-sub**, or it can be left at any level above the surface to make it **the perfect beach-club swim platform**. The abundant interior space, and features such as the hydraulic lift platform and panoramic vision make quaranta more suitable for passengers with reduced mobility. Depending on the degree of reduced mobility, an internal elevator may be required, which can be fitted in lieu of the central staircase and flybridge Jacuzzi on a customised new Curvelle **quaranta** model.

Основная информация

Тип судна: Катамаран

Модельный год: 2014

Размеры

Длина общая: 111' 11" (34.1mm)

Мин. осадка: 7' 7" (2.3mm)

Скорость, вместимость и масса

Крейс. скорость: 17 Knots Kts. (20 MPH)

Макс. скорость: 20 Knots Kts. (23 MPH)

Вместимость воды: 3800 Gallons

Вместимость сточного бака:
1003.85 Gal Gallons

Объем топливного бака: 6075.96 Gal Gallons

Размещение

Всего кают: 6

Всего коек: 12

Спальные места: 12

Всего ком. состава: 8

Каюты экипажа: 7

Койки экипажа: 7

Комм. состав экипажа: 3

Корпус и палуба

Материал корпуса: Carbon Composite

Материал палубы: Teak

Комплектация корпуса: Катамаран

Цвет корпуса: matterhorn white

Дизайнер корпуса: Incat Crowther

Дизайнер экстерьера: Mauro Giamboi

Дизайнер интерьера: Alex Isaac

Информация о двигателе

Двигатели: 2

Производитель: Caterpillar

Тип двигателя: Inboard

Тип топлива: Diesel

ФОТОГРАФИИ

stern profile



guest cabin in suite configuration



guest cabin in suite configuration



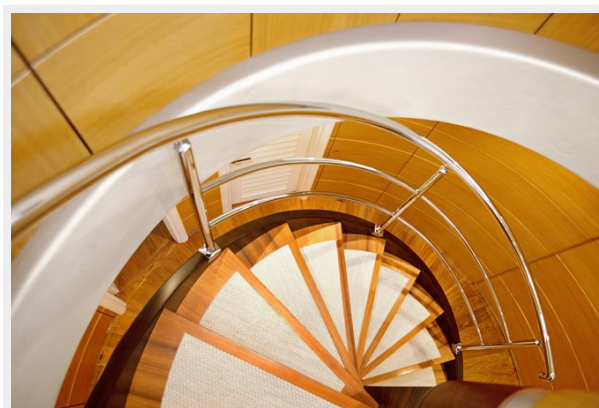
bow



wheelhouse



stairs to main deck



stairs to saloon deck



master cabin in double/suite configuration



master cabin in double/suite configuration



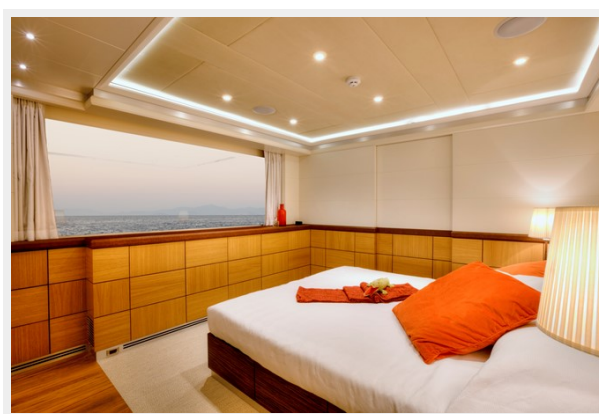
stern platform down for tender launch



top deck



guest cabin in double configuration



top deck



bathroom feature



top deck



stern platform down for tender launch



tender storage underway



stern platform down for tender launch



stern platform down for tender launch



dining saloon from deck



dining saloon



adjustable dining table for 12



saloon



saloon



master cabin bathroom



guest cabin in twin configuration



1 of 2 engine rooms



Foredeck



top deck



Quaranta Kos Greece



КОНТАКТЫ

Андрей Шестаков (Andrey Shestakov) – ведущий яхтенный брокер отдела продаж яхт и судов компании Shestakov Yacht Sales Inc. Официальный представитель Shestakov Yacht Sales Inc. для русскоговорящих клиентов в центральном офисе компании в Майами/Форт Лодердейл/Флорида/США.

Контактная информация

Email: **andrey@shestakovyachtsales.com**

Web: **shestakovyachtsales.com**

Телефоны

Краснодарский край: **+7(918)465-66-44**

США, Майами, Флорида: **+1(954)274-4435**

Время работы

Понедельник – Суббота: **9:00 - 21:00** EDT

Воскресенье: **Закрыто**

Адрес



Harbour Towne Marina, 850 NE 3rd St, STE 213, Dania, FL 33004