

## BLACK MARLIN — HATTERAS



**Builder:** HATTERAS

**Year Built:** 1983

**Model:** Sport Fisherman

**Price:** PRICE ON APPLICATION

**Location:** United States

**LOA:** 55' 0" (16.76m)

**Beam:** 17' 6" (5.33m)

**Min Draft:** 4' 10" (1.47m)

**Cruise Speed:** 20 Kts. (23 MPH)

**Max Speed:** 23 Kts. (26 MPH)

Our experienced yacht broker, Andrey Shestakov, will help you choose and buy a yacht that best suits your needs **BLACK MARLIN — HATTERAS** from our catalogue. Presently, at Shestakov Yacht Sales Inc., we have a wide variety of yachts available on our sale's list. We also work in close contact with all the big yacht manufacturers from all over the world.

If you would like to buy a yacht **BLACK MARLIN — HATTERAS** or would like help answering any questions concerning purchasing, selling or chartering a yacht, please call **+1(954)274-4435**

# TABLE OF CONTENTS

TABLE OF CONTENTS	2
SPECIFICATIONS	5
Basic Information	5
Dimensions	5
Speed, Capacities and Weight	5
Accommodations	5
Hull and Deck Information	5
Engine Information	6
DETAILED INFORMATION	7
Details	7
Salon	7
Layout	7
Heads	8
Forward Deck	8
Large Cockpit	8
Bridge	8
Engine Room	9
Spare Parts	9
Exclusions	10
Disclaimer	10
PHOTOS	11
Profile	11
Portside	11
Aft	11
Aft	11
Aft	12
Salon	12
Salon	12

Salon	12
Dinette	12
Galley	12
Galley	13
Master Stateroom	13
Twin Bunk 1	13
Twin Bunk	13
Head	13
Head	13
Washer & Dryer	14
Flybridge	14
Flybridge	14
Electronics	14
Electronics	14
Electronics	14
Deck	15
Deck	15
Galley	15
Engine Room	15
Galley	15
Engine Room	16
Engine Room	16
Head	16
Engine Room	16
CONTACTS	17
Contact details	17
Telephones	17
Office hours	17
Address	17



---

# SPECIFICATIONS

---

## Basic Information

---

**Category:** Sport Fisherman

**Sub Category:** Convertible

**Model Year:** 1983

**Year Built:** 1983

**Country:** United States

**Fly Bridge:** Yes

## Dimensions

---

**LOA:** 55' 0" (16.76m)

**Beam:** 17' 6" (5.33m)

**Min Draft:** 4' 10" (1.47m)

## Speed, Capacities and Weight

---

**Cruise Speed:** 20 Kts. (23 MPH)

**Max Speed:** 23 Kts. (26 MPH)

**Displacement:** 70000 Pounds

**Gross Tonnage:** 35 Pounds

**Water Capacity:** 380 Gallons

**Fuel Capacity:** 1285 Gallons

## Accommodations

---

**Total Cabins:** 3

**Total Berths:** 3

**Sleeps:** 6

**Total Heads:** 3

## Hull and Deck Information

---

**Hull Material:** Fiberglass

**Hull Designer:** J. Hargrave

---

## Engine Information

---

**Engines:** 2

**Manufacturer:** Detroit Diesel

**Model:** 12V72

**Engine Type:** Inboard

**Fuel Type:** Diesel

---

# DETAILED INFORMATION

---

## Details

---

Introduced in 1980 as the replacement for the Hatteras 53 Convertible, this 55 Convertible enjoyed a long and successful production. The huge cockpit is equipped with a molded tackle center, transom door and direct access to the spacious standup engine room. The fly bridge is huge with an efficient helm layout and plenty of guest seating. It is recognized as a stable fishing platform and a popular boat with cruisers as well as anglers. "Black Marlin" was operated by a non-smoking European family, extremely well maintained, totally upgraded in 1996, painted twice (last in 2005). Great fish catcher! Although the boat has not been used in the last years, weekly boat wash and monthly metal polishing has been performed without interruptions. Bottom cleaning and zincs replacement has also been taken care on a monthly base. In 2006 major electrical and engine update. Engine and gens check up as well as all filters replaced in 10/2010.

## Salon

---

- L-shaped vinyl sofa party transformable into a queen bed
- 1 captain swivel chair
- 1 teak cocktail table (2002)
- Cabinet with (below) Magnavox TV/DVD (2006), and (above) ALDER marine-fax, SEA322 VHF radio (bridge and salon), Raytheon hand-held radio
- TECHNICS stereo system with dual-cassette recorder
- Ice-maker (2002)
- Wall-to-wall carpet with runner
- In the galley Jenn-Air 2 burners electric stove and grilling plate, locked-in Coffeemaker and toaster/oven, Sharp Microwave convection oven (2002), 2 doors Kenmore Food center (2000), trash-compactor, stainless steel sink with Whole House fresh water filter and instant hot water dispenser
- Complete brown china dinnerware
- Bamboo blinds and looking like new valances and curtains on all windows
- Hand-held fire extinguishers (as well as in every cabin)

## Layout

---

Features a three-stateroom galley/dinette-up layout. Forward stateroom features upper and lower berths to starboard, head with shower across to port and hanging locker, drawer storage and

Maytag stack washer and dryer (2002). Moving aft, master stateroom is located on the starboard side, featuring an island queen berth, large hanging locker, head with stall shower, includes a hanging locker, abundant cabinetry storage behind the door and under the berth, as well as along the starboard side. Located across to port is the guest stateroom which includes upper and lower berths, head with stall shower and ample cabinetry storage. Up 5 steps to galley/salon area. The galley is located on the starboard side, with beautiful hard wood floor recently refreshed. Dinette is across to port. Salon features an L-shaped couch to starboard, occasional swivel chair to port, cocktail table, cabinet with TV and electronic devices, ice maker and stereo system.

Designer: J. Hargrave

---

## Heads

---

Three head lay-out. One in master, one in port cabin and one in forward cabin. All have showers and Galley Maid heads.

---

## Forward Deck

---

- Two double fender holders with 4 reserve black fenders
- 110 Volt crane with remote
- Life raft for 8 people
- Galley Maid Anchor windlass with Danforth Anchor
- Fresh water outlet

---

## Large Cockpit

---

- Huge Freezer
- Several storage cabinets
- Pompanette fighting chair with footrest with cover and/or
- Cocktail table (in place of the fighting chair)
- Live bait well and 2 huge fish-boxes
- Dockside fresh water system
- Additional drive stand to port (under cover)
- 2 x 36' outriggers
- Transom door for large fish
- Swim ladder (no platform)

---

## Bridge

---



- Spacious room for 10 people
- New cushions (2008)
- 2 Pompanette chairs with cushions
- Overhead navigation panels for hiding the instruments
- Datamarine depth finder, ICOM radio, Garmin 2006C fish finder and GPS, SIMRAD AP autopilot, RAITHEON R41 radar, RAY-LINE remote controlled Searchlight, ACR remote controlled search lights, LEWMAR anchor windlass, PROBE forward depth finder, NORTHSTAR 800x LoranC, SEA322 VHF radio (same in the salon), Horizon MS700 marine radio, Audiovox hailer
- Ladder to hard top through hatch
- Numerous storage cabinets and storage for life vests

---

## Engine Room

---

- 2 x Detroit Diesel High Performance 12V72, 875 HP ea., 1039 hrs SMOH
- 2 Twin Disc transmissions
- GLENDINNING Engine Synchronizer
- 2 x 20 KW Kohler GENERATORS (688hrs, 936hrs)
- 4 x CRUISAIR conditioning units
- 1 x 120 Volt fresh water pump
- 1 x 32 Volt fresh water pump
- 2 x Halon automatic fire extinguishers plus hand-held ones
- 8 12 Volt Marine batteries (new 10/2010)
- 1 x 120 Volt air conditioning pump (plus 1 reserve)
- 1 x 120 Volt 20 gallon hot water heater
- 4 x 1000 Racor Fuel Filters (engines)
- 2 x 500 Racor Fuel Filters (generators)
- Spare propellers
- Spare Danforth Anchor 82000 (50)
- Spare smaller anchor

---

## Spare Parts

---

- Various RACOR and NAPA 3166 fuel and oil filters
- Several Generator V-Belts 4L500W
- Various hoses
- Box of Hatteras screws
- Device for changing propellers with spare nuts
- Springs for KNN airseps
- 2 x 50 AMP shore cables and 1x 30 AMP shore cable
- Graphite fiber shaft packing
- O-rings for gen sets

- 1 x 2000 GPH Rule bilge pump
- 1 Jabsco bilge pump
- 1 dive compressor with a 90 ft. hose
- 1 lead dive belt
- Turnbuckles
- Various gaskets for sea strainers
- 2 fuse holders for cockpit electrical outlets
- Boxes with spare bulbs and fuses
- 3 spare impellers for generators
- 2 cases with Hatteras Specs and drawings
- and much more...

---

## Exclusions

Owner's personal belongings.

---

## Disclaimer

The Company offers the details of this vessel or yacht in good faith but cannot guarantee or warrant the accuracy of this information nor warrant the condition of the vessel. A buyer should instruct his representatives, agents, or his surveyors, to investigate such details as the buyer desires validated. This vessel or yacht is offered subject to prior sale, price change, or withdrawal without notice.

# PHOTOS

**Profile**



**Portside**



**Aft**



**Aft**



**Aft**



**Salon**



**Salon**



**Salon**



**Dinette**



**Galley**



**Galley**



**Master Stateroom**



**Twin Bunk 1**



**Twin Bunk**



**Head**



**Head**



Washer & Dryer



Flybridge



Flybridge



Electronics



Electronics



Electronics



Deck



Deck



Galley



Engine Room



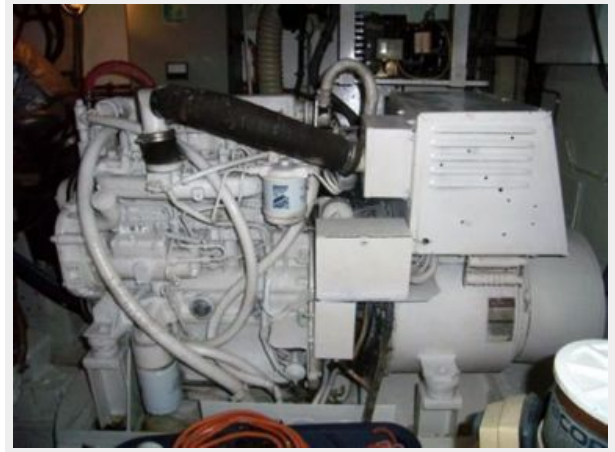
Galley



**Engine Room**



**Engine Room**



**Engine Room**



**Head**





# CONTACTS

---

Andrey Shestakov, leading yacht broker of the sales department of Shestakov Yacht Sales Inc. Shestakov Yacht Sales Inc., the official representative of the Miami/Fort Lauderdale FL headquarters.

## Contact details

---

Email: [andrey@shestakovyachtsales.com](mailto:andrey@shestakovyachtsales.com)

Web: [shestakovyachtsales.com/en/](http://shestakovyachtsales.com/en/)

## Telephones

---

USA: +1(954)274-4435

## Office hours

---

Monday – Saturday: **9:00 - 21:00** EDT

Sunday: **closed**

## Address

---



Harbour Towne Marina, 850 NE 3rd St,  
STE 213, Dania, FL 33004