

## ENVY — MULDER YACHTS



**Builder:** MULDER YACHTS

**Model:** Motor Yacht

**LOA:** 67' 9" (20.65mm)

**Min Draft:** 5' (1.52mm)

**Cruise Speed:** 16 Knots Kts. (18 MPH)

**Max Speed:** 21 Knots Kts. (24 MPH)

Our experienced yacht broker, Andrey Shestakov, will help you choose and buy a yacht that best suits your needs **Envy — MULDER YACHTS** from **our catalogue**. Presently, at **Shestakov Yacht Sales Inc.**, we have a wide variety of yachts available on **our sale's list**. We also work in close contact with all the big **yacht manufacturers** from all over the world.

If you would like to buy a yacht **Envy — MULDER YACHTS** or would like help answering any questions concerning purchasing, selling or chartering a yacht, please call **+1(954)274-4435**

---

# TABLE OF CONTENTS

---

|                              |   |
|------------------------------|---|
| TABLE OF CONTENTS            | 2 |
| SPECIFICATIONS               | 3 |
| Overview                     | 3 |
| Basic Information            | 3 |
| Dimensions                   | 3 |
| Speed, Capacities and Weight | 3 |
| Accommodations               | 4 |
| Hull and Deck Information    | 4 |
| Engine Information           | 4 |
| PHOTOS                       | 5 |
| Mulder 68 Convertible        | 5 |
| Salon                        | 5 |
| Salon                        | 5 |
| Layout Envy                  | 6 |
| CONTACTS                     | 7 |
| Contact details              | 7 |
| Telephones                   | 7 |
| Office hours                 | 7 |
| Address                      | 7 |

---

# SPECIFICATIONS

---

## Overview

---

Envy is a full aluminum semi displacement twin screw motor yacht built by the renowned Mulder Shipyard in The Netherlands.

She is in very good condition, in the winter of 2009/2010 the hull and superstructure where spray painted, floors varnished, new batteries installed etc.

A very comfortable 2 cabin lay out with additional crew or children's cabin in the aft section of the ship.

## Basic Information

---

**Category:** Motor Yacht

**Sub Category:** Semi-Displacement

**Model Year:** 2006

**Refit Type:** Mini refit, newly spray painted, floors varnished, new batteries, etc.

## Dimensions

---

**LOA:** 67' 9" (20.65mm)

**Min Draft:** 5' (1.52mm)

## Speed, Capacities and Weight

---

**Cruise Speed:** 16 Knots Kts. (18 MPH) **Max Speed:** 21 Knots Kts. (24 MPH)

**Water Capacity:** 2200 Gallons

**Holding Tank:** 264.17 Gal Gallons

**Fuel Capacity:** 1717.12 Gal Gallons

---

## Accommodations

---

**Total Cabins:** 2

**Total Berths:** 4

**Sleeps:** 4

**Total Heads:** 2

**Crew Cabin:** 2

**Crew Berths:** 2

---

## Hull and Deck Information

---

**Hull Material:** Aluminum

**Deck Material:** Teak

**Hull Configuration:** Semi-Displacement **Hull Color:** Dark Blue

**Hull Designer:** Vripack Naval Architects **Exterior Designer:** Guido de Groot

**Interior Designer:** Guido de Groot

---

## Engine Information

---

**Engines:** 2

**Manufacturer:** Caterpillar

**Engine Type:** Inboard

**Fuel Type:** Diesel

# PHOTOS

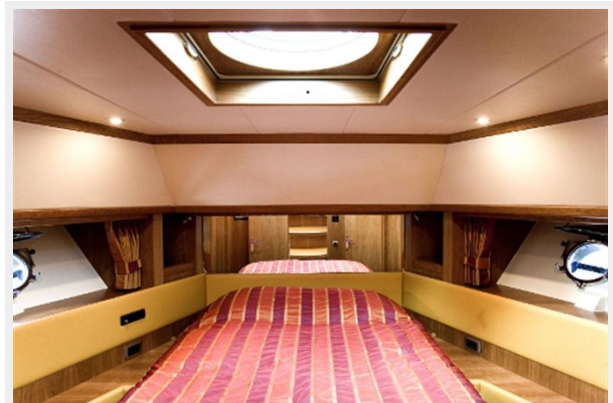
## Mulder 68 Convertible



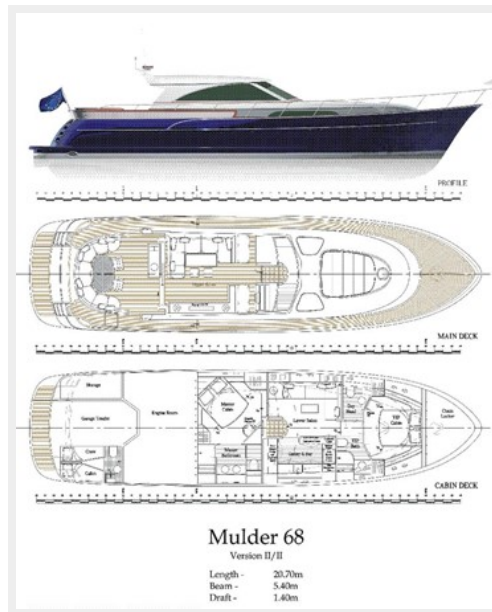
## Salon



## Salon



## Layout Envy





# CONTACTS

---

Andrey Shestakov, leading yacht broker of the sales department of Shestakov Yacht Sales Inc. Shestakov Yacht Sales Inc., the official representative of the Miami/Fort Lauderdale FL headquarters.

## Contact details

---

Email: **andrey@shestakovyachtsales.com**

Web: [shestakovyachtsales.com/en/](https://shestakovyachtsales.com/en/)

## Telephones

---

USA: **+1(954)274-4435**

## Office hours

---

Monday – Saturday: **9:00 - 21:00** EDT

Sunday: **closed**

## Address

---



Harbour Towne Marina, 850 NE 3rd St, STE 213, Dania, FL 33004