

DREAM VOYAGER — SOUTHERN WIND SHIPYARDS



Судостроитель:

SOUTHERN WIND SHIPYARDS

Год постройки: 1991

Модель: Cruising/Racing Sailboat

Цена: ЦЕНА ЯХТЫ ПО ЗАПРОСУ

Местонахождение: United States

Длина общая: 72' 0" (21.95m)

Ширина: 19' 8" (5.99m)

Мин. осадка: 9' 4" (2.84m)

Крейс. скорость: 10 Kts. (12 MPH)

Макс. скорость: 14 Kts. (16 MPH)

Купить **DREAM VOYAGER — SOUTHERN WIND SHIPYARDS** а также выбрать подходящую вам яхту из нашего каталога яхт вам поможет опытный яхтенный брокер Андрей Шестаков. На сегодняшний день компания **Shestakov Yacht Sales Inc.** имеет большое количество яхт в собственном списке продаж, а также тесно сотрудничает со всеми крупными яхтенными производителями по всему миру.

Для того чтобы купить яхту **DREAM VOYAGER — SOUTHERN WIND SHIPYARDS** а также проконсультироваться по любому вопросу связанному с покупкой, продажей, чартером яхт позвоните по телефону **+7(918)465-66-44**.

ОГЛАВЛЕНИЕ

| | |
|--------------------------------------|----|
| ОГЛАВЛЕНИЕ | 2 |
| ХАРАКТЕРИСТИКИ | 4 |
| Обзор | 4 |
| Основная информация | 4 |
| Размеры | 4 |
| Скорость, вместимость и масса | 5 |
| Размещение | 5 |
| Корпус и палуба | 5 |
| Информация о двигателе | 5 |
| ПОДРОБНОЕ ОПИСАНИЕ | 6 |
| Introductory Comments | 6 |
| Accommodations | 6 |
| Entertainment Equipment | 8 |
| Galley | 8 |
| Electronics and Navigation | 8 |
| Helm | 9 |
| Mechanical Equipment | 9 |
| Electrical System | 9 |
| Hull | 10 |
| Deck Equipment | 10 |
| Mast, Rigging and Sails | 10 |
| Safety Protection | 11 |
| Fire Extinguishers | 11 |
| Canvas | 11 |
| Recent Upgrades to S/V Dream Voyager | 12 |
| Features | 12 |
| Exclusions | 12 |
| Remarks | 12 |

| | |
|--------------------------|-----------|
| Исключения | 13 |
| Отказ от ответственности | 13 |
| ФОТОГРАФИИ | 14 |
| Salon Settee | 14 |
| Salon Dining Table | 14 |
| Guest Cabin | 14 |
| Guest Cabin | 14 |
| Navigation Station | 15 |
| Master Cabin | 15 |
| Galley | 15 |
| Interior Line Drawing | 15 |
| КОНТАКТЫ | 16 |
| Контактная информация | 16 |
| Телефоны | 16 |
| Время работы | 16 |
| Адрес | 16 |

ХАРАКТЕРИСТИКИ

Обзор

Bruce Farr has a well earned reputation for producing superior fast cruising and racing designs. Southern Wind Shipyard in South Africa is one acknowledged as one of the world's premier quality sailing yacht builders. DREAM VOYAGER, a 72' performance cruising yacht, is an impressive example of Bruce Farr and Southern Wind's collaborative effort.

Built in 1991, Dream Voyager provides her current and next owner an exceptionally comfortable, strong, fast, well finished fiberglass yacht, outfitted for extended liveaboard and ocean passagemaking. She is one of a number of Farr 70's build by Southern Wind and one of only two with the center cockpit deck design. The benefits of the center cockpit are greater interior volume, larger master stateroom and engine room and better cockpit for short handed sailing. Her first owner sailed from South Africa to the US on her maiden voyage with one mate and the current owner often sails her with only his daughter on board.

An inspection of Dream Voyager will confirm her excellent condition and the quality and ambiance of her exquisite teak interior. New Maxwell anchor windlass, anchor chain and bimini top and dodger are examples of recent upgrades. A sea trial will confirm her superior performance in all wind conditions and how easily she handles with all lines led to the center cockpit. All her equipment systems and electronics are in good working condition and her entire exterior has recently been repainted. No yacht her size offers more for under \$1,000,000 and her final selling price will be less than 25% of her current replacement. A recent survey is available for interested buyers.

OWNER WILL CONSIDER REAL ESTATE TRADE

Основная информация

Тип судна: Cruising/Racing Sailboat

Модельный год: 1991

Год постройки: 1991

Страна: United States

Размеры

Длина общая: 72' 0" (21.95m)

Длина по ватерлинии: 60' 0" (18.29m)

Ширина: 19' 8" (5.99m)

Мин. осадка: 9' 4" (2.84m)

Скорость, вместимость и масса

Крейс. скорость: 10 Kts. (12 MPH)

Макс. скорость: 14 Kts. (16 MPH)

Вместимость воды: 260 Gallons

Объем топливного бака: 630 Gallons

Размещение

Всего кают: 4

Корпус и палуба

Материал корпуса: Fiberglass

Дизайнер корпуса: Bruce Farr

Информация о двигателе

Двигатели: 1

Производитель: Volvo

Модель: Penta

Тип топлива: Diesel

ПОДРОБНОЕ ОПИСАНИЕ

Introductory Comments

Bruce Farr has a well earned reputation for producing superior fast cruising and racing designs. Southern Wind Shipyard in South Africa is one acknowledged as one of the world's premier quality sailing yacht builders. DREAM VOYAGER, a 72' performance cruising yacht, is an impressive example of Bruce Farr and Southern Wind's collaborative effort. Built in 1991, Dream Voyager provides her current and next owner an exceptionally comfortable, strong, fast, well finished fiberglass yacht, outfitted for extended liveaboard and ocean passagemaking. She is one of a number of Farr 70's build by Southern Wind and one of only two with the center cockpit deck design. The benefits of the center cockpit are greater interior volume, larger master stateroom and engine room and better cockpit for short handed sailing. Her first owner sailed from South Africa to the US on her maiden voyage with one mate and the current owner often sails her with only his daughter on board. An inspection of Dream Voyager will confirm her excellent condition and the quality and ambiance of her exquisite teak interior. New Maxwell anchor windlass, anchor chain and bimini top and dodger are examples of recent upgrades. A sea trial will confirm her superior performance in all wind conditions and how easily she handles with all lines led to the center cockpit. All her equipment systems and electronics are in good working condition and her entire exterior has recently been repainted. No yacht her size offers more for under \$1,000,000 and her final selling price will be less than 25% of her current replacement. A recent survey is available for interested buyers.

Accommodations

DREAM VOYAGER sleeps up to 7 owners and guests in 3 staterooms with 1 captain's cabin. In addition, there is an extra settee berth in the master stateroom and the salon settees can be used for additional berths. Both the master and VIP staterooms have ensuite heads and the forward two staterooms share a head.

The interior features exquisite varnished golden teak, with ultra suede headliners. The cabin sole is varnished teak with holly inlays throughout. Five zone reverse cycle air conditioning provides AC and heat, and was added in 2003. Mood lighting below enhances the ambiance at night.

The spacious main salon has a U shaped upholstered settee around a large teak dining table to port. To starboard is an extra wide settee with bar and entertainment center. Outboard of the

settees are storage lockers and shelves with additional storage behind the backrests.

Aft of the main salon to starboard is an impressive navigation station. A full sized chart table has a lift up top and all navigation equipment and electronics are built in to the forward and outboard consoles. Forward of the nav center is a cabinet with a second large top loading freezer. Also to starboard is a wide passageway to the aft master stateroom with inboard door to the walk in engine room, and a large locker outboard.

The aft master stateroom is a full-width cabin with king size berth to port and full length settee to starboard that is an ideal berth at sea. A deep (double) hanging locker includes a concealed space with a safe. A bureau, additional hanging lockers and shelves provide excellent storage. The ensuite head forward to port includes a shower, sink/vanity with Corian countertop and electric toilet.

Forward of the salon, to port, is a very spacious VIP guest cabin with a queen Pullman berth with drawers under. Additional storage includes a bedside bureau with drawer and cabinet below and a hanging locker. An ensuite head with electric toilet has a shower, mirror vanity with Corian counter and sink, and storage outboard.

To starboard, forward of the salon, is a large galley with double stainless steel sinks, four burner propane stove with oven and grill, and bulkhead mounted microwave. The refurbished galley includes wide Corian counter tops. The custom refrigeration includes 2 large vertical (forward opening) compartments and separate freezer. (Additional large top loading freezer forward of the nav station). Under the counter is a coffee maker and electric toaster oven.

Forward of the galley are two staterooms. The port stateroom has a double lower berth with single above. The starboard stateroom has a single berth for a captain or an additional guest. These two cabins share an ensuite head with shower.

Entertainment Equipment

In main salon: Philips HD TV and DVD player; Sony CDC 800 digital CD/Audio player with 10 disc pak; JVC stereo DC player and JVC stereo cassette player. Also JVC stereo CD (2003) in master and guest staterooms.

Speakers are located throughout the boat: 2 in salon, 2 in master stateroom, 2 in guest stateroom, 2 in cockpit, 2 in galley.

Galley

- Force 10 4-burner propane stove with oven and broiler
- Sharp Carousel II microwave oven
- (2) Large custom refrigerators
- (2) custom freezers: 1 in galley and 1 larger freezer adjacent to navigation station
- (3) Wireless electronic temperature gauges for refrigerator & freezers
- Rich Beers custom refrigeration system with extra box insulation powered by shore power and AC generator. System can be cooled by water and air, or by air alone.
- There are two separate sets of cooling coils in the plates to provide redundancy if needed

Electronics and Navigation

All electronics and navigation equipment were replaced in 2003:

NAV STATION:

- Furuno NavNet Radar system with GPS and Chartplotter with 36 mile radar and 10.4" display
- Furuno Fax30 Weatherfax and Navtex configured for Navionics charts
- Northstar 952 GPS Chartplotter with Navionics charts
- Autopilot remote
- Brookes and Gatehouse Hydra 2000 System, 2 displays, and 1 Halcyon display
- EchoPilot Gold forward looking sonar dual system
- Simrad Robertson AP20X dual station auto pilot full size auto control
- Mackay ABB Nera Worldphone: Mini M satellite communications telephone
- ICOM M802 single sideband marine high frequency radio email enabled
- Pactor PTC-IIex email system subscribed to SailMail ISP
- ICOM M602 VHF dual station marine radio
- ICOM M1V VHF marine transceiver, portable hand held unit

Helm

- Furuno Navnet radar/GPS Chartplotter with 7" display
- 1 B&G (Hydra 2000) digital display
- 6 B & G analog displays (Hydra 2000 system), wind speed, depth information
- EchoPilot Gold forward looking sonar dual system
- AP20X Simrad Robertson autopilot control head
- RAM microphone for ICOM M602 VHF

Mechanical Equipment

- Volvo Penta TAMD 41B, 200hp turbo diesel main engine with 6000+ hrs.
- Complete engine cooling system serviced (2012)
- Engine painted
- Volvo MS4A 26-3 transmission, ratio 1:2.63
- Volvo flex coupling
- New cutlass bearing (2011)
- Replaced insulation in engine room (new 2003)
- Feathering Max propeller
- Offshore Marine 800 gpd watermaker (new 2003)
- Marine Air reverse cycle air conditioner: 5 separate compressors and 5 controls. Aft master stateroom unit is completely dedicated with its own pump and can be operated with the inverter. (Galley AC replaced May 2003. Aft master AC unit replaced in 2004)
- A/C raw water pump and motor rebuilt (2012)
- (2) Fresh water pumps; one is backup
- (2) Raritan Crown electric heads (new 2003),
- 1 Raritan manual head
- Holding tank with electric macerator for offshore evacuation
- (2) Rule Heavy Duty 3700 GPH automatic bilge pumps (engine room and salon)
- (2) Jabsco 500 GPH electric bilge pumps (engine room and salon)
- (2) Jabsco Amazon 1300 GPH manual bilge pumps (galley and salon)
- (2) Whale Gusher 10 manual bilge pumps (engine room and lazarette)
- (3) Jabsco 360 GPH electric bilge pumps (one in each head)
- (1) Rule 750 GPH automatic bilge pump (forward)
- High water alarm (2003)

Electrical System

- Kilo Pak, 15kW generator, approximately 6,100 hrs.
- 220V splits to (2) 110 V 50/60 hz AC electrical system
- 24v & 12v DC electrical system
- Isolation transformer - Allows yacht to utilize US and foreign shorepower, 50 or 60

cycles. All the motors on the boat can accommodate 50 or 60 cycle.

- Mastervolt inverter/charger (2011)
- Heart True-Charge, 12V battery charger
- Motorola 140 amps alternator (1 + spare) (rebuilt 2012)
- 8D batteries for house battery
- (2) 4D batteries for engine start
- 4D battery for generator start
- (2) 12V batteries for electronics
- (2) 100' shore power cords
- GFI 120 volt AC outlets in galley, all heads and engine room

Hull

Fiberglass sandwich construction, 2" bottom thickness with 3/4" solid fiberglass outer skin. Impressive keel grid system with massive transverse and longitudinal stringers. Lead bulb keel. Three watertight bulkheads. Hull repainted with Awlgrip 2009.

Deck Equipment

Low maintenance fiberglass sandwich deck with nonskid, repainted with Awlgrip 2009. On deck the cockpit provides for great outdoor dining with special lighting fitted into the bimini top. Teak stern seats. Clear deck space and a modern sugar scoop stern with a step are additional assets. All lines are led to the cockpit where all sail handling can be performed easily.

- Large sail locker forward with chain locker
- Chain also stored aft in second chain locker near the main mast for voyages
- Maxwell VWC model 2500 vertical anchor windlass (2008)
- Double bow roller
- Bruce 110 lb (50 Kg) primary anchor with 280' of 12 mm chain
- Danforth storm anchor with 30' of chain and 160' of 1" rode.
- Transom swim platform with swim ladder
- Hot/cold fresh water shower at swim platform
- Two huge storage lazarettes in stern section
- Collision void in the stern and bow
- Double rail bow and stern pulpits
- Lifelines with tapered side stanchions
- Passarelle boarding ramp
- All deck hatches rescaled (2012)

Mast, Rigging and Sails

Easy sail handling can be performed from the cockpit; all lines are led to cockpit electric winches.

Complete rigging inspection November, 2008.

- Hallspar main mast and boom
- Fredericksen battcar system and lazy jacks with boom rail sail cradle, stack pak on main (new 2012)
- Navtek rod rigging
- Profurl headsail rollerfurling
- Doyle storm sail
- Navtec hydraulic boom vang and back stay adjuster
- Navtec hydraulic pump (Rebuilt 2012)
- (2) Lewmar 700 STE, 3 speed electric primary sheet winches
- Main sheet Lewmar 700 ST, 2 speed winch
- (6) Lewmar 650 ST, 2 speed winches
- (2) Lewmar 30 ST, 2 speed winches
- Toe buttons for electric primary winches and windlass
- Doyle fully battened main sail (Reconditioned 2012)
- Doyle genoa (reconditioned 2010)
- Doyle MPS
- Carbon fiber spinnaker pole with adjustable track

Safety Protection

- Litton CosPas SarSat EPIRB
- (2) Horseshoe life rings with 1 strobe
- Lifesling Overboard Rescue System
- (3) Children's life jackets
- (11) Adult life jackets
- Orion flare kit (OK to October 2012)
- Air horn

Fire Extinguishers

- Chubb E, 5 kilo fire extinguisher in engine room
- Dry chemical fire extinguisher in stern lazarette
- (10) Hand-held fire extinguishers distributed throughout boat
- (2) Carbon monoxide alarms
- (5) Smoke alarms distributed throughout boat

Canvas

- Helm pedestal cover

- Cockpit cushions, pillows, and two folding captain's chairs
- Dodger bimini with side curtains and internal lighting (2007)
- Deck awning aft of mast to backstay

Recent Upgrades to S/V Dream Voyager

Completed a haul out, exterior and interior survey for insurance company. Surveyor noted: "Dream Voyager is in unusually good condition."

- All exterior surfaces repainted with Awlgrip
- Applied 2 coats of antifouling paint to bottom; 3 coats at water line
- Cleaned and coated prop, shaft and strut and replaced zincs
- Cleaned all fuel tanks and polished diesel fuel to 2 microns
- Installed on-board diesel fuel polishing system
- Serviced Volvo main engine and generator diesel engines
- Replaced seals and gaskets in all hatches and portholes
- Sanded, sealed, painted and varnished freezer and refrigerator surfaces
- Serviced refrigeration compressor
- Installed new Maxwell WVC 2500 Windlass
- Replaced anchor chain
- Replaced bimini top and dodger
- Reconditioned head sail
- Replaced EPIRB

Features

- Drop down transparent companionway entrance
- Recessed headliner shade screens for deck hatches
- Wempe clock and barometer
- Detailed maintenance logs – few preowned yachts have comparable detailed maintenance records

Exclusions

- Personal effects, tools and art work.

Remarks

Dream Voyager is an exceptionally well maintained Bruce Farr 72. She is the ultimate for an

owner who appreciates great sailing performance and loves a responsive, good looking, comfortable, quality sailing yacht. Dream Voyager's 60' waterline insures effortless 200 mile days with the ability to regularly log over 250. The very comfortable 4 stateroom interior arrangement offers a high level of luxury and privacy. This versatile, low maintenance design has the Farr design and Southern Wind build pedigree that benefits current and future owners. No yacht Dream Voyager's size is a better value. With an asking price under \$1,000,000, Dream Voyager is an excellent value for family cruising and occasional charter.

Исключения

При продаже яхты исключаются личные вещи владельца.

Отказ от ответственности

Компания предоставляет описание судна или яхты добросовестно, но не может гарантировать точность этой информации, а также не ручается за техническое состояние. Покупатель должен проинструктировать своих агентов или оценщиков исследовать представленную информацию более подробно, по собственному желанию. Продажа судна или яхты, изменение цены или снятие с продажи будет происходить без предварительного уведомления.

ФОТОГРАФИИ

Salon Settee



Salon Dining Table



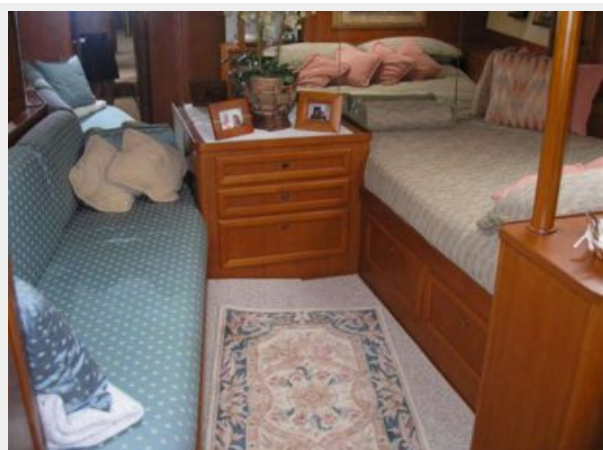
Guest Cabin



Guest Cabin



Master Cabin



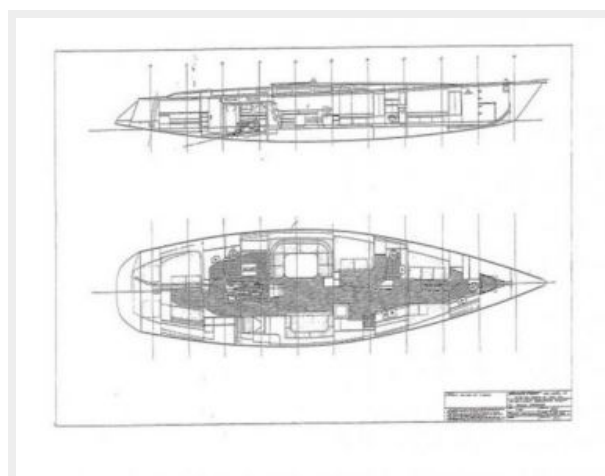
Navigation Station



Galley



Interior Line Drawing



КОНТАКТЫ

Андрей Шестаков (Andrey Shestakov) – ведущий яхтенный брокер отдела продаж яхт и судов компании Shestakov Yacht Sales Inc. Официальный представитель Shestakov Yacht Sales Inc. для русскоговорящих клиентов в центральном офисе компании в Майами/Форт Лодердейл/Флорида/США.

Контактная информация

Email: andrey@shestakovyachtsales.com

Web: shestakovyachtsales.com

Телефоны

Краснодарский край: **+7(918)465-66-44**

США, Майами, Флорида: **+1(954)274-4435**

Время работы

Понедельник – Суббота: **9:00 - 21:00**
EDT

Воскресенье: **Закрето**

Адрес



Harbour Towne Marina, 850 NE 3rd St,
STE 213, Dania, FL 33004