

## JOURNEY — IRWIN YACHTS



**Builder:** IRWIN YACHTS

**Year Built:** 1986

**Model:** Cruising Sailboat

**Price:** PRICE ON APPLICATION

**Location:** United States

**LOA:** 52' 0" (15.85m)

**Beam:** 15' 4" (4.67m)

**Max Draft:** 5' 6" (1.68m)

**Cruise Speed:** 8 Kts. (9 MPH)

**Max Speed:** 9 Kts. (10 MPH)

Our experienced yacht broker, Andrey Shestakov, will help you choose and buy a yacht that best suits your needs **Journey — IRWIN YACHTS** from our catalogue. Presently, at Shestakov Yacht Sales Inc., we have a wide variety of yachts available on our sale's list. We also work in close contact with all the big yacht manufacturers from all over the world.

If you would like to buy a yacht **Journey — IRWIN YACHTS** or would like help answering any questions concerning purchasing, selling or chartering a yacht, please call **+1(954)274-4435**

# TABLE OF CONTENTS

---

TABLE OF CONTENTS	2
SPECIFICATIONS	5
Basic Information	5
Dimensions	5
Speed, Capacities and Weight	5
Hull and Deck Information	5
Engine Information	5
DETAILED INFORMATION	6
Introduction	6
Accommodations	6
Galley	7
Navigation Station Electronics	7
Helm Electronics	7
Deck	8
Hull	9
Sails And Rigging	10
Electrical	11
Watermaker	12
Mechanical	13
Broker's Remarks	13
Exclusions	13
Disclaimer	14
PHOTOS	15
Entertainment	15
Layout Drawing	15
Port Settee	15
Dinette	15
Dinette Setup	15

Starboard Settee	15
Master Companionway	16
Breakfast	16
Master Berth Forward	16
Master Starboard	16
Master Berth	17
Master Port	17
Master Shower Tub	17
Master Head	17
Master Vanity	18
Companionway Forward	18
Guest Head	18
Guest Berth	18
VIP	19
VIP Head	19
VIP Vanity	19
VIP Shower	19
Galley	20
Galley	20
Galley	20
Galley	20
Helm Electronics	21
Helm	21
Windlass	21
Port Deck Forward	22
Bow Deck	22
Starboard Deck Aft	22
Bow Deck Aft	22
Port Deck Aft	23

---

Cockpit Starboard	23
Cockpit Aft	23
Port Side	23
Stern Deck	24
On The Hard	24
On The Hard Stern View	24
Masts	25
Underway	25
Electrical Panel	25
Panel	25
Genset Controls	26
Genset	26
Inverter	26
Engine	27
CONTACTS	28
Contact details	28
Telephones	28
Office hours	28
Address	28

---

# SPECIFICATIONS

---

## Basic Information

---

**Category:** Cruising Sailboat

**Model Year:** 1986

**Year Built:** 1986

**Country:** United States

## Dimensions

---

**LOA:** 52' 0" (15.85m)

**Beam:** 15' 4" (4.67m)

**Max Draft:** 5' 6" (1.68m)

## Speed, Capacities and Weight

---

**Cruise Speed:** 8 Kts. (9 MPH)

**Max Speed:** 9 Kts. (10 MPH)

**Displacement:** 46000 Pounds

**Water Capacity:** 375 Gallons

**Fuel Capacity:** 260 Gallons

## Hull and Deck Information

---

**Hull Material:** Fiberglass

## Engine Information

---

**Engines:** 1

**Manufacturer:** Perkins

**Model:** 4-236

**Engine Type:** Inboard

**Fuel Type:** Diesel

---

# DETAILED INFORMATION

---

## Introduction

---

*A stunning Irwin 52 Mark II, JOURNEY has received continued updates since 2004 and has finished her cruising adventures and is now seriously for sale. A deck-salon styled boat before there were deck-salon sailboats. The motor yacht like interior accommodations, spacious cockpit, wide side decks, and raised bulwarks make the 52 Mark II one of the most popular 50 foot plus sailboats ever produced. The size and interior volume make the Irwin 52 a perfect cruising or live aboard sailboat. JOURNEY features 3 staterooms and 3 heads and a center line queen size aft cabin master stateroom complete with large head and bath tub. She will please even the most discrimination buyer.*

## Accommodations

---

As you approach JOURNEY on the dock you begin to realize the sheer size and beauty she represents. The custom stern mounted dingy lift adds ease when using the dingy and also can act as a swim platform. The wide side decks offer easy maneuverability around the boat and the U-shaped cockpit area will seat a crowd.

From the cockpit and down 5 steps you enter the voluminous main salon. The abundance of natural light is evident and the beauty of the interior woodwork and teak and holly flooring is stunning. From the companionway and to starboard is the galley area and breakfast bar. The bar area features two barrel type chairs and a raised bar area for ease of serving. The galley itself is down one step, U-shaped, and quite large featuring double stainless steel sinks, 7.5 cubic feet of refrigerator and freezer spaces, ample storage cabinets and drawers, and a large food prep area. Back to the companionway and to port is the companionway to the master stateroom. In the companionway and to starboard is a cabinet which features separate washer and dryer spaces. To port is the navigation station and electrical panel with an overhead bookshelf featuring individual notebooks for each ships system. A large locker is just before the doorway into the master and features the water maker and the Xantrex battery charger/inverter. As you enter the master stateroom there are port and starboard storage areas with custom made bookshelves on top. The master berth is a queen center-lined raised berth with custom pillow top mattress. The master has several hanging lockers and the master head features a shower and bath tub combination, large vanity with stainless steel sink, and ample storage areas. Back to the main salon there are port and starboard settees and a folding dinette table with the port side settee. The salon entertainment area is along the aft port side and features satellite TV and a flatscreen TV, storage areas behind and below and access to the stereo system which is adapted for IPOD and Sirius radio. Forward in the main salon are fixed book shelves port and starboard. Down one step and forward is the small companionway to the VIP and guest staterooms. The guest is port and features upper and lower berths, a hanging locker, under lower berth drawers

and an ensuite head, vanity and shower. The toilet has been removed in favor of extra storage, however; all plumbing remains for easy re-installation if desired. To starboard and across from the guest stateroom is access into the VIP head and shower area which is also used as the day head. The VIP head features a large vanity with stainless steel sink, separate toilet and shower area and a private door in the VIP stateroom. The VIP stateroom is all way forward and offers a small starboard side settee, ample under berth drawers and a hanging locker. The berth is a V-berth with filler cushions with port and starboard shelves. Chain locker access is through a forward teak doorway.

---

## Galley

---

Large U-Shaped galley with ample storage room, large refrigerator and freezer space, double stainless steel sinks, and a large food preparation area make the galley a chef's delight.

Double stainless steel sinks

Pressurized water with backup foot pump

Grunert refrigerator/freezer with holding plates – Extra cold plate added

Extra refrigerator/freezer insulation

Hillrange Princess 3 burner propane stove top and gimbaled oven

Trident propane gas controller

Whirlpool EZ Choice microwave oven

Kenmore washer and dryer

---

## Navigation Station Electronics

---

Raytheon Ray210 HVF radio with speaker

Furuno GP-37 GPS/WAAS

Raytheon Ray152 SSB radio

---

## Helm Electronics

---

Raytheon Ray201 VHF radio with speaker

---

Raymarine SL-70 color chart plotter/radar

Raymarine ST-60 depth, wind, and speed

Raytheon Autohelm ST-6002 autopilot

5 ½" Galaxy AquaMeter binnacle compass

Raytheon AC152 coupler

(2) independent GPS antennas, Furuno and Raymarine

Sky-Mate email communication system

## Deck

---

Guzzler manual bilge pump

Tempered glass salon windows

Custom welded stainless steel bow and stern pulpits

(2) anchor rollers

(2) chain Hawse pipes at bow

(6) stainless steel cleats

Varnished teak grab rails on cabin house sides

Varnished teak toe rails

Varnished teak cap rails

Varnished folding cockpit table with bottle rack

Chromed deck fittings for fuel, water and waste

(13) Atkins and Hoyle aluminum opening ports

(12) Atkins and Hoyle aluminum opening hatches

Maxwell Nilsson electric winch with foot switch

90 lbs CQR anchor with 240 ft, 3/8" BBB chain



65 lbs Luke anchor with 200' of 3/8" high test chain, and large fortress anchor

Chain locker in bow which self drains to bilge

Stainless steel stanchions and vinyl covered life lines

Double cable lifelines with boarding gates port and starboard

(6) Large cockpit coaming lockers

Cockpit hot and cold shower

Deck and anchor raw water wash down system

Custom rigid aluminum framed bimini top support

Stamoid bimini top and side curtains fully enclose cockpit area

Stamoid sun tarp with side panel from main mast-mizzen mast

Custom sun tarp for rear deck and bow, with storage bags

Cockpit sun shade

Quantum sails large rain water collector new in 2008

Propane locker for (2) 20 pound propane tanks with Marinetics solenoid

Emergency tiller system

Magma stainless steel BBQ grill mounted on stern

Custom stainless steel kayak holders

Custom hydraulic dingy lift with remote

Plastimo Life Raft, serviced June 2010

ACR 406 EBIRB

Coast Guard Safety Package

---

## Hull

---

Exterior was refinished and repainted in October 2003

Non-skid surface refinished and repainted in July 2007

Lazarette refinished and painted in August 2007

Bottom painted with Peakes Trinidad in 2007

Cutter rigged ketch with “U” shaped cockpit

Sunbrella dark blue cockpit cushions

Displacement hull with modified shoal keel and partial skeg mounted rudder

Internal and encapsulated lead ballast

Permanently secured centerboard in the “up” position

One piece molded fiberglass hull with Klegecell coring above the water line

Hull and keel molded in one piece with integral deck flange

Athwartships reinforced wooden bulkheads

---

## Sails And Rigging

---

Kenyon masts

All standing rigging replaced with Dynell wire in 1995

Main Kenyon mast renewed in 2008

Main mast height reduced to 63.5 feet for ICW ease

3 ½ inch compression post and single aluminum spreader

Mizzen mast back stays and topping lift replaced in 2007

Main mast has forespar EZ-Furl roller furling

Harken roller furling on JIB

Profurl roller furling on Staysail

12 volt spreader lights on main and mizzen sails controlled at helm and navigation station

Stainless steel turnbuckles and toggles

Boom Vang

(2) Barlow #23, 2 speed self-tailing winches

---

Main sail renewed in 2008 by Quantum Sails

(2) Barlow #32, 2 speed self-tailing winches for Genoa, port and starboard

(2) Lewmar #30, 2 speed self tailing winches for JIB, port and starboard

Barlow #19, 2 speed self-tailing winch for main sheet, port side

Lewmar #40, 2 speed self tailing electric winch for main roller furling

Mizzen sail 180 sf, 9.3 oz high modulus Dacron by Quantum Sails

Yankee sail with new sacrificial sun strip 2007

Staysail renewed 2003 with new sacrificial sun strip 2007

Cruising spinnaker 1/5 oz with dousing sleeve

New spinnaker halyard in 2007

New furling lines for JIB, Main and Stay Sail, 2007

New main sail topping lift and outhaul 2008

New main sheets 2007

Genoa 110% Yankee cut JIB

## Electrical

---

Blue Seas custom designed master control panel with circuit breakers

12 volt DC and 120 volt AC power

8 Kw generator run by Detroit diesel engine, 1800 hours

Generator Racor primary fuel filter

Various generator parts

(2) 120 volt, 30 Amp shore power inlet with cord, splitters and adapters

240 volt, 50 Amp shore power inlet with cord, splitters and adapters

Xantrex/Trace 2500 watt sine wave inverter with 150 Amp charger

Heart Freedom 2000 watt, 20 Amp inverter/charger used as back up

Heart monitor for load status

---

(4) 4000 series, 6 volt, 350 AH deep cycle Rolls batteries

12 volt Group D battery for generator starting

Custom fiberglass battery storage box with ventilation

Link battery monitor

Engine alternator upgrade to 90 Amp with external regulator

KVH TRAC Vision 4 satellite television for DirecTV

15 inch flatscreen TV in main salon

Pioneer AM/FM/CD player with I-Pod adapter

60 watt Profile California amplifier in main salon

Polk Audio speakers in main salon, master and VIP staterooms

Bose cockpit speakers

SuperStor 12 gallon stainless steel water heater with heat exchanger

Marine-Air conditioning systems, 12,000 BTU in forward cabin, main salon, and master

Marine-Air electronic controllers

Primary bilge pump 5.7 GPM electric with 5.7 GPM backup

Oberdorfer raw water pump for refrigeration and air conditioning systems

Backup raw water pump connected to a manifold for AC, refrigeration, wash down, or H2O maker

Zinc Saver 50 system

West 3000 gph bilge pump with float switch and alarm

Rule 2000 sump pump with automatic float switch

## Watermaker

---

HRO systems water maker, reverse osmosis, 110 volt. 400 gallons a day, 16 gph

Newer parts including water pump, boost pump, control board, and housing

---

## Mechanical

---

Perkins 4-236M, 4 cylinder diesel engine with 3680 hours and fresh water cooled

Borg Warner Velvet Drive transmission with 2.57:1 ratio

Single lever transmission and throttle controls

Stainless steel 1 3/4 inch prop shaft

Stuffing box replaced 2010

(2) engine room blowers

Engine panel with low oil pressure and temperature alarms

Racor primary fuel filter

Reverso oil exchanging system

Bronze sea strainers and sea cocks

28 inch stainless steel steering wheel with lock

Automatic Fireboy fire suppression system

Various engine spares

---

## Broker's Remarks

---

A beautiful and continually updated Irwin 52, JOURNEY has been maintained by a knowledgeable owner who spared no expenses in her maintenance. All you need is your personal belongings and JOURNEY is ready and equipped for any voyage you may plan. The list of standard features, updated features, and safety extras make JOURNEY a must see for sailor seeking a large and safe passage maker.

**Extensive List of Upgrades and Extras Available from Listing Broker, 2004-Present**

---

## Exclusions

---

Owner's personal belongings.

## Disclaimer

---

The Company offers the details of this vessel or yacht in good faith but cannot guarantee or warrant the accuracy of this information nor warrant the condition of the vessel. A buyer should instruct his representatives, agents, or his surveyors, to investigate such details as the buyer desires validated. This vessel or yacht is offered subject to prior sale, price change, or withdrawal without notice.

# PHOTOS

## Entertainment

### Layout Drawing



### Port Settee



### Dinette



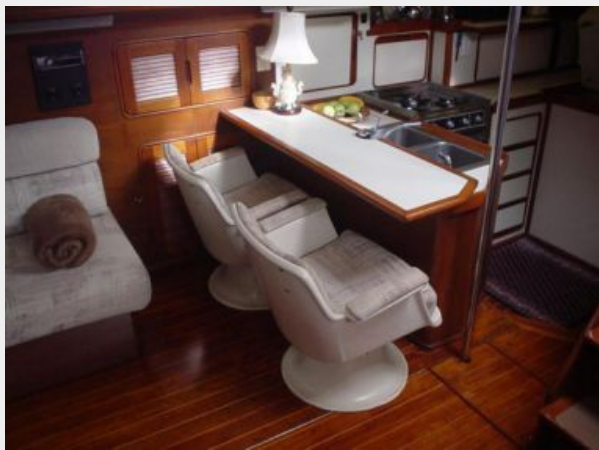
### Dinette Setup



### Starboard Settee



**Breakfast**



**Master Companionway**



**Master Berth Forward**



**Master Starboard**

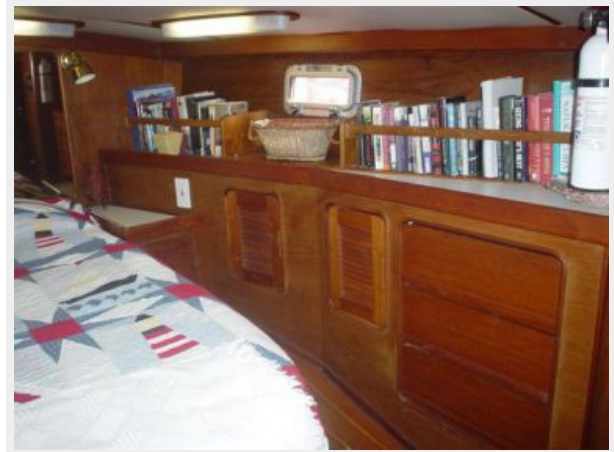




**Master Berth**



**Master Port**



**Master Shower Tub**



**Master Head**



**Master Vanity**



**Companionway Forward**



**Guest Head**



**Guest Berth**



VIP



VIP Head



VIP Vanity



VIP Shower



Galley



Galley



Galley



Galley



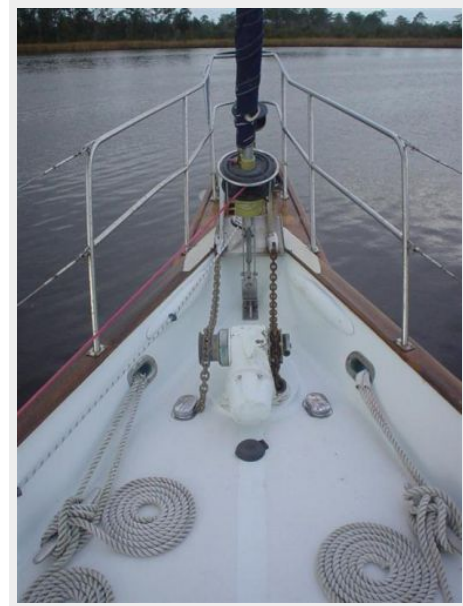
### Helm Electronics



### Helm



### Windlass



**Bow Deck**



**Port Deck Forward**



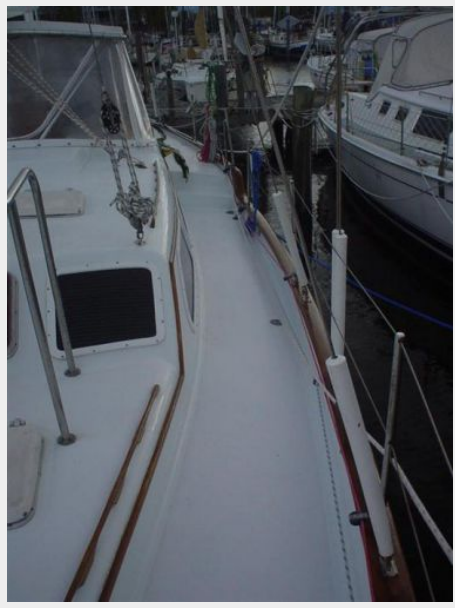
**Starboard Deck Aft**



**Bow Deck Aft**



**Port Deck Aft**



**Cockpit Starboard**



**Cockpit Aft**



**Port Side**



### Stern Deck



### On The Hard



### On The Hard Stern View





### Masts



### Underway



### Electrical Panel

### Panel



### Genset Controls



### Genset



### Inverter



## Engine



# CONTACTS

---

Andrey Shestakov, leading yacht broker of the sales department of Shestakov Yacht Sales Inc. Shestakov Yacht Sales Inc., the official representative of the Miami/Fort Lauderdale FL headquarters.

## Contact details

---

Email: [andrey@shestakovyachtsales.com](mailto:andrey@shestakovyachtsales.com)

Web: [shestakovyachtsales.com/en/](http://shestakovyachtsales.com/en/)

## Telephones

---

USA: +1(954)274-4435

## Office hours

---

Monday – Saturday: **9:00 - 21:00** EDT

Sunday: **closed**

## Address

---



Harbour Towne Marina, 850 NE 3rd St,  
STE 213, Dania, FL 33004