

## NO NAME — MARINE TRADER



**Builder:** MARINE TRADER

**Year Built:** 1979

**Model:** Trawler

**Price:** PRICE ON APPLICATION

**Location:** United States

**LOA:** 38' 0" (11.58m)

**Beam:** 12' 10" (3.91m)

**Max Draft:** 4' 0" (1.22m)

**Cruise Speed:** 7 Kts. (8 MPH)

**Max Speed:** 10 Kts. (12 MPH)

Our experienced yacht broker, Andrey Shestakov, will help you choose and buy a yacht that best suits your needs **No Name — MARINE TRADER** from our catalogue. Presently, at Shestakov Yacht Sales Inc., we have a wide variety of yachts available on our sale's list. We also work in close contact with all the big yacht manufacturers from all over the world.

If you would like to buy a yacht **No Name — MARINE TRADER** or would like help answering any questions concerning purchasing, selling or chartering a yacht, please call **+1(954)274-4435**

---

# TABLE OF CONTENTS

---

TABLE OF CONTENTS	2
SPECIFICATIONS	3
Overview	3
Basic Information	3
Dimensions	3
Speed, Capacities and Weight	3
Hull and Deck Information	3
Engine Information	4
DETAILED INFORMATION	5
Accommodations	5
Exclusions	6
Disclaimer	6
PHOTOS	7
CONTACTS	10
Contact details	10
Telephones	10
Office hours	10
Address	10

---

# SPECIFICATIONS

---

## Overview

---

Here's your chance to own a great Florida boat! Two 16K BTU air conditioners to keep everyone cool and a genset to run them when you're away from the dock. Lots of room for entertaining. A single diesel that only has 400 hours on her since major overhaul and sips around 3 GPH when cruising at 7-8 knots. Very economical. She is decorated nicely with many improvements and is ready to go! Call today and be on the water tomorrow!

## Basic Information

---

**Category:** Trawler

**Model Year:** 1979

**Year Built:** 1979

**Country:** United States

**Cockpit:** Yes

## Dimensions

---

**LOA:** 38' 0" (11.58m)

**Beam:** 12' 10" (3.91m)

**Max Draft:** 4' 0" (1.22m)

**MFG Length:** 38' 0" (11.58m)

## Speed, Capacities and Weight

---

**Cruise Speed:** 7 Kts. (8 MPH)

**Max Speed:** 10 Kts. (12 MPH)

**Displacement:** 22000 Pounds

**Water Capacity:** 250 Gallons

**Fuel Capacity:** 300 Gallons

## Hull and Deck Information

---

**Hull Material:** Fiberglass

---

## Engine Information

---

**Engines:** 1

**Manufacturer:** Lehman

**Model:** 2715E

**Engine Type:** Inboard

**Fuel Type:** Diesel

# DETAILED INFORMATION

## Accommodations

**Accommodations** Typical Double Cabin classic trawler, with the great layout of a forward cabin and large aft cabin, making it very easy for two couples or a small family to cruise. Forward cabin has a large v-berth with an enclosed head/shower (electric head). A large butterfly hatch is above for great ventilation. Nice storage under the berth. Hanging locker with easy access to interior helm controls. A small door behind the forward steps allows access to the engine room. The galley, salon and interior helm are all on the deck level. Settee has seating for 6. Down the aft stairs, leads to the master stateroom. The berth is offset to port which makes for a large cabin. There are two hanging lockers, drawers for storage, a desk and chair. The head has a tub/shower combination and an electric head. This cabin has it's own dedicated 16K BTU reverse cycle air conditioning system w/electronic controls. The aft companionway has been upgraded with a custom wooden hatch.

- (2) 16K BTU reverse cycle marine air conditioning systems
- (1 for the salon and 1 for aft cabin)
- opening windows w/screens
- both entry doors have custom etching
- Lower helm seat with storage underneath
- Teak flooring throughout
- 12 Vdc and 110 Vac lighting
- Great storage under berths, cabinets and settee

**Galley** The galley runs down the starboard side of the salon and offers lots of storage and has plenty of counter space to prepare your gourmet meals. The four burner stove/oven is propane so you don't have to run the genset to prepare a meal.

- Sanyo 110 Vac Refrigerator/Freezer
- Stainless Steel double sink
- Pressurized hot & cold fresh water
- Foot pump fresh water at sink
- Great storage in and under cabinets
- Whirlpool Microwave (2004)
- 110 Vac Water Heater
- 110 Vac outlets

## Electronics

- Lower helm:
- Garmin 2010C GPS Chartplotter
- Ray Jefferson Model 5000 VHF
- Clarion AM/FM/CD Model M5675
- Box speakers in salon and helm
- Flybridge helm:
- Garmin 2010C GPS Chartplotter
- Standard Horizon Intrepid LE VHF
- Cetec Benmar Autopilot
- Glomex TV Antenna

**Electrical** 7.5 kW Onan genset with remote start at interior helm.

- Battery Charger
- Inverter
- Dual 30 Amp shore service w/power cords

## Deck and Hull

- Newer Bimini w/full flybridge enclosure
- No teak decking on flybridge or aft cabin top
- Mast and boom
- Full width swim platform and stainless steel ladder
- Large bow pulpit w/dual anchor rollers
- Maxwell Windlass w/foot control
- 45# CQR w/ 3/8" chain rode
- 40# Danforth w/ 3/8" chain rode

**Engine & Mechanical** The Lehman engine shows total hours of 3556 and only has 400 hours on her since a major overhaul. Sips 3 GPH when pushing the boat along at 7-8 knots. She has a dual Racor 900 fuel filtering system w/vacuum gauges which can also be used to polish the fuel.

**Brokers Comments** Current owner has owned her for 10 years and is a professional in the marine industry. This boat has had a lot of upgrades and there are still more to come. She is a good solid boat that should deliver years of entertainment and do so economically. Exclusions: Personal items.

## Exclusions

---

Owner's personal belongings.

## Disclaimer

---

The Company offers the details of this vessel or yacht in good faith but cannot guarantee or warrant the accuracy of this information nor warrant the condition of the vessel. A buyer should instruct his representatives, agents, or his surveyors, to investigate such details as the buyer desires validated. This vessel or yacht is offered subject to prior sale, price change, or withdrawal without notice.

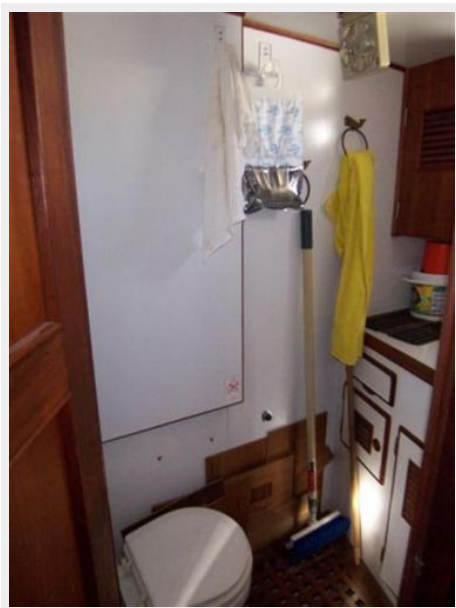
# PHOTOS











---

# CONTACTS

---

Andrey Shestakov, leading yacht broker of the sales department of Shestakov Yacht Sales Inc. Shestakov Yacht Sales Inc., the official representative of the Miami/Fort Lauderdale FL headquarters.

---

## Contact details

---

Email: [andrey@shestakovyachtsales.com](mailto:andrey@shestakovyachtsales.com)

Web: [shestakovyachtsales.com/en/](http://shestakovyachtsales.com/en/)

---

## Telephones

---

USA: +1(954)274-4435

---

## Office hours

---

Monday – Saturday: **9:00 - 21:00** EDT

Sunday: **closed**

---

## Address

---



Harbour Towne Marina, 850 NE 3rd St,  
STE 213, Dania, FL 33004