

## WANDERER — LITTLE HARBOR



**Builder:** LITTLE HARBOR

**Year Built:** 1982

**Model:** Cruising Sailboat

**Price:** PRICE ON APPLICATION

**Location:** United States

**LOA:** 62' 0" (18.90m)

**Beam:** 16' 4" (4.98m)

**Min Draft:** 5' 11" (1.80m)

**Max Draft:** 13' 9" (4.19m)

Our experienced yacht broker, Andrey Shestakov, will help you choose and buy a yacht that best suits your needs Wanderer — LITTLE HARBOR from our catalogue. Presently, at Shestakov Yacht Sales Inc., we have a wide variety of yachts available on our sale's list. We also work in close contact with all the big yacht manufacturers from all over the world.

If you would like to buy a yacht Wanderer — LITTLE HARBOR or would like help answering any questions concerning purchasing, selling or chartering a yacht, please call +1(954)274-4435

# TABLE OF CONTENTS

TABLE OF CONTENTS	2
SPECIFICATIONS	4
Overview	4
Basic Information	4
Dimensions	4
Speed, Capacities and Weight	4
Accommodations	5
Hull and Deck Information	5
DETAILED INFORMATION	6
Overview	6
Accommodations	6
Master Stateroom	6
Guest Staterooms	6
Crew Quarters	7
Galley	7
Salon	7
Cockpit	7
Electronics and Navigational Equipment	7
Electrical System	8
Deck Equipment	8
Ground Tackle	8
Sails and Rigging	8
Engine /Mechanical Equipment	8
Additional Equipment	8
Safety Equipment	9
Remarks & Overview of Previous Upgrades	9
Broker Comments	10
Exclusions	10

---

Disclaimer	10
PHOTOS	11
Nav Station	12
Extra Single	12
Guest Stateroom Starboard	13
Guest Stateroom Port	13
Foredeck	13
Foredeck	13
Oct. 2011 Haulout	14
CONTACTS	15
Contact details	15
Telephones	15
Office hours	15
Address	15

---

# SPECIFICATIONS

---

## Overview

---

Few sailing designs have transcended time like the Little Harbor Yachts have and the looks, performance, (Marion to Bermuda class winner) and quality of Wanderer will set the standard in yacht design for many years to come. In recent years, Wanderer has undergone a complete refit in various stages. The main refit items, which are listed by dates and in more detail within the following pages, include complete new teak decks, Awlgrip paint, entire rigging and sail inventory, bottom peel and relamination with West Epoxy System, bow thruster, electronics, canvas, windlass, deck hatches, plus dozens of other significant upgrades listed below. If fast, comfortable family cruising or a continuation of Wanderer's unique and profitable charter capabilities fit into your future plans, come to Ft. Lauderdale and get aboard.

## Basic Information

---

**Category:** Cruising Sailboat

**Model Year:** 1982

**Year Built:** 1982

**Country:** United States

## Dimensions

---

**LOA:** 62' 0" (18.90m)

**LWL:** 49' 6" (15.09m)

**LOD:** 61' 7" (18.77m)

**Beam:** 16' 4" (4.98m)

**Min Draft:** 5' 11" (1.80m)

**Max Draft:** 13' 9" (4.19m)

## Speed, Capacities and Weight

---

**Displacement:** 88000 Pounds

**Water Capacity:** 900 Gallons

**Fuel Capacity:** 600 Gallons

---

## Accommodations

---

**Total Cabins:** 4

**Total Berths:** 1

**Sleeps:** 8

**Total Heads:** 1

**Crew Berths:** 1

**Crew Sleeps:** 1

**Crew Heads:** 1

---

## Hull and Deck Information

---

**Hull Material:** Fiberglass

**Deck Material:** Teak

**Hull Designer:** Ted Hood

---

# DETAILED INFORMATION

---

## Overview

---

Few sailing designs have transcended time like the Little Harbor Yachts have and the looks, performance, (Marion to Bermuda race class winner) and quality of Wanderer will set the standard in yacht design for many years to come. In recent years, Wanderer has undergone a complete refit in various stages, and this has created the finest Little Harbor 62 to be offered for sale at any time. The main refit items, which are listed by dates and in more detail within the following pages, include complete new teak decks, Awlgrip paint, entire rigging and sail inventory, bottom peel and relamination with West Epoxy System, bow thruster, electronics, canvas, windlass, deck hatches, dinghy and outboard motor, plus dozens of other significant upgrades listed below. If fast, comfortable family cruising or a continuation of Wanderer's unique and profitable charter capabilities fit into your future plans, come to Ft. Lauderdale and get aboard....it will be a visit that you will remember for years to come, and one that will add to your enjoyment and appreciation of the elegant sailing life!

## Accommodations

---

This lovely Raised Salon Center Cockpit Little Harbor 62 sleeps eight in four private cabins. Each cabin has its own head with shower. There is an abundance of dorades, opening ports, and hatches offering plenty of ventilation. Additionally, there are 18 fixed ports, which account for a bright comfortable interior. The Crew's cabin is forward followed by port and starboard Guest Staterooms. Continuing aft and up one step is a generous salon complete with settee, L-shaped dinette, and access to the galley on starboard and the Nav station on port. Continuing aft to port through a passageway is the Master stateroom. Teak and holly soles throughout, varnished teak furniture and ceilings, soft vinyl overheads. Upholstery is tan ultrasuede. White curtains for port lights.

## Master Stateroom

---

The Master Stateroom is located aft accessed through a portside companionway next to the Nav Station. The stateroom is complete with two hanging lockers, bookshelves, a vanity and a bureau. On starboard is a double berth and on port is a single berth. The Master head is located aft and includes a Vacu-Flush marine toilet, vanity and a stall shower. Four opening ports and an opening deck hatch provide light and ventilation.

## Guest Staterooms

---

The portside Guest Stateroom has upper and lower bunks, a hanging locker, and drawer storage. Aft and also on port is the Guest/Day Head with VacuFlush marine toilet and a shower. This

Head has access from the Salon and the port Stateroom. The starboard side Stateroom features a double bed, a hanging locker drawer storage and is connected to a Guest Head. This Head, located on the starboard side forward of the Stateroom, has a stall shower and a VacuFlush marine toilet.

---

## Crew Quarters

---

The Crew's Quarters are located forward and are complete with V-berth and insert and storage under. There are two hanging lockers, bookshelves and front opening storage bins. Aft and to port is the Crew's Head complete with VacuFlush marine toilet. Aft and to starboard is the stall shower.

---

## Galley

---

The starboard side U-shaped Galley opens into the Salon. Double stainless sink Top loading Grunert refrigerator and freezer Force Ten gimbaled 3 burner stove with oven (propane, 2 twenty lb canisters mounted in a vented box on deck) Sharp microwave Raritan ice maker Black & Decker coffee maker and a 20 gallon hot water heater An abundance of built-in storage lockers and drawers 33 gph Spectra MPC 3000 watermaker

---

## Salon

---

The Main Salon is laid out with a tan ultrasuede L-shaped dinette on starboard around a drop leaf table. Opposite on port is a settee with teak coffee table forward and the Nav station aft (facing aft). The engine room is accessed through hatches in the Salon floor. The salon area is bright and airy thanks to several fixed hull and cabin ports.

---

## Cockpit

---

The elevated center cockpit allows for exceptional visibility whether powering or under sail. Forward of the wheel is a drop-leaf table for topside dining. The cockpit is protected with dodger and bimini. The cockpit is fully equipped with sailing instruments (duplicates at the Nav Station). Varnished teak wrap-around coaming seat backs with integral hand holds. Elkhide covered stainless steel wheel and pedestal guard. Built in walk thru exits to side decks. Teak surfaces on seating, sole and exits. Fiberglass pedestal houses the engine instrument clusters, with compass in stainless steel binnacle mounted atop.

---

## Electronics and Navigational Equipment

---

**Cockpit:** ICOM VHF M502 B&G Hydra wind/depth/speed Apparent wind meter GPS- Garmin Map 232 Auto pilot- Simrad AP26 Rudder angle indicator **Navigation Station:** ICOM VHF M502

B&G Hydra wind/depth/speed ICOM M710 SSB New 2010 Nera Sat phone WiFi MFC 210C fax, copier, & scanner Raytheon RL 80 C Radar GPS-Raytheon Chart plotter with large flat screen & wireless keyboard Sea Water temperature gauge Furuno Weather fax **Entertainment:** WiFi System throughout Sony 24" Flat Screen TV Jensen stereo, CD, tape player 2010

---

## Electrical System

---

2 8D Marine batteries (engine start) 2015 12 2-volt deep cycle batteries (house bank 24V) 1 Group 31 Marine battery (nav system) 1 Newmar 80 amp battery charger 1 Xantrex Truecharge 40-amp charger Heart 3000 inverter / charger

---

## Deck Equipment

---

Teak decks (07) 2-20 lb propane cylinders mounted in a vented locker On deck refrigerator 2 wash downs 2 Lewmar 52 self tailing electric winches 2 Lewmar 65 self tailing electric winches 2 Lewmar 55 self tailing winches 12 White cowl vents with teak dorade boxes Stainless steel dorade protector rails 4 aluminum frame deck hatches Maxwell electric windlass (Model 3500) Double life lines with boarding gates Raised teak toe rails with integral stainless steel chocks

---

## Ground Tackle

---

105 lb. CQR anchor 75 lb. CQR anchor 100 lb. emergency kedge anchor 350' 1/2" chain 100' 1/2" chain 200' 1" rode Sea Drogue w/400' line

---

## Sails and Rigging

---

Hood Stoway Mast Sails by Hood (06) main, genoa, staysail, & Quantum spinnaker (Cleaned/Service Fall 2016) Navtec hydraulic backstay, boom vang Hydraulic electric furlers for genoa, staysail, mainsail

---

## Engine /Mechanical Equipment

---

2 130 hp FWC Perkins diesel engines (6-534 model) Borg Warner Velvet drive transmissions 2.5:1 2-3 blade bronze props (Luke feathering) 1 Northern Lights 8kw genset 3 Air conditioning units 4 12 volt automatic bilge pumps 2 110 volt automatic bilge pumps Groco 12 volt oil change pump Side Power bow thruster (new 07) 33 gph Spectra watermaker

---

## Additional Equipment

---

Boarding ladder Inflatable dinghy ('06) Caribe 13' 40 hp OB (Yamaha) 4-stroke Dive tanks &



snorkel gear

---

## Safety Equipment

---

12 type 1 life vests 2 type 4 life vests 2 Halon fire extinguishers in engine compartment 4 Dry chemical fire extinguishers High water alarms Ships horn Spotlight Alden 406 EPIRB MOM 8 by Survival Technologies Viking 8 man life raft with manual water maker (Not in certification)

---

## Remarks & Overview of Previous Upgrades

---

**2009:** During 2009, after multiple survey and engineering overviews, Wanderer underwent a most extensive underwater blister repair process, to correct a previously applied repair process, completed in 2006. In 2009, under the direction and subsequent inspection of an engineer/naval architect who was originally involved in the construction of Little Harbor vessels, the bottom was completely peeled of the outer laminate and faring, dried and resealed with West System G/Flex epoxy, then re laminated with fiberglass cloth and epoxy. After this process, all through hull fittings were reinstalled and the final 3000 barrier coat was applied, yielding an underwater repair seldom equaled on composite hull laminates and one that far exceeds ABS thickness standards for offshore racing yachts. **Updates from 2006 to 2008:** New Teak Decking Systems deck replacement including re-sealing and surfacing fiberglass sub deck (07) Complete bottom peeling, drying, (under supervision of surveyor) and barrier coating with vinylester resin Replacement of all stainless chain plates, including new stemhead fitting New Sidepower 20 hp bow thruster New Luke feathering propellers Hull repainted (Awlgrip Midnight Blue) Replaced all batteries Rebuilt centerboard New bow pulpit, stern rails, and lifelines Removed/replaced all thru-hulls Removed/rebedded all deck fittings during new teak decks Replaced/rebuilt deck hatches New Lewmar hydraulic 3500 windlass and anchor wash down system Complete removal and x-ray of standing rigging plus replacement of needed parts with new turnbuckles. New mast step, rebuilt all furlers, boom vang, complete hydraulic panel, plus replaced all halyards and sheets. Spinnaker pole & gear overhauled. New bilge pumps Electronics: Autopilot, SSB, GPS/plotter, satellite phone, VHF's, wind, speed, depth, large screen monitor Replaced sanitation system, including new fresh water flushing heads All sails replaced by Hood Sailmakers: Mainsail, genoa, staysail. Spinnaker inspected and serviced (2017) All cushions and interior mattresses replaced New Force 10 stove, BBQ, aluminum propane cylinders, and valves New Sharp microwave Replaced all fresh water plumbing Rebuilt reefer system with new valves and wiring Converted starboard guest stateroom from two small singles to double bed outboard of centerline. New drawers and flooring done at that time (08) New stereo system (June 08) Servicing and rebuilding of generator AC armature system and replacing rear main seal on diesel engine (completed June 12, 2008) New shaft spurs and packing glands (06) (4) New shaft bearings in 06 Rebuilt air conditioning system (06) Replaced all mast sheaves, bearings, and pins (06) Rebuilt 5 deck vents

---

## Broker Comments

---

In the previous refit, **Wanderer** has had well over \$1,000,000 invested into practically every category. For decades, these elegant Ted Hood designed performance cruisers have established a standard that few other builders have been able to equal, and if this design fits your sailing needs, you do not need to look further, just get aboard and do a close inspection...you will not be disappointed. The constant updating of Wanderer includes, but is not limited to the following significant categories: Painting of entire topsides, replacement of teak decking, complete peel/drying/ and relaminating of the bottom, recent sails, electronics, windlass, interior soft goods, canvas, cushions, and always fresh varnish...the list goes on and should be seen in the complete listing.

---

## Exclusions

---

Owner's personal belongings.

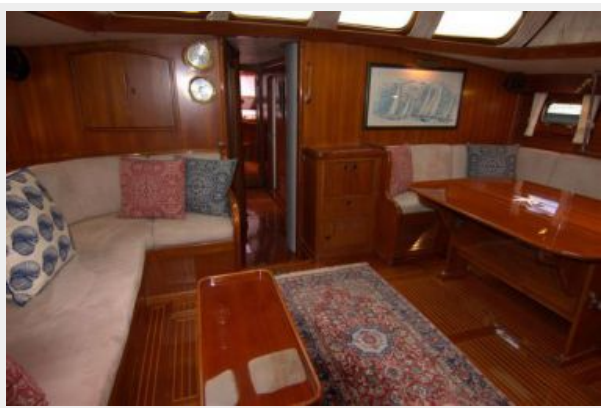
---

## Disclaimer

---

The Company offers the details of this vessel or yacht in good faith but cannot guarantee or warrant the accuracy of this information nor warrant the condition of the vessel. A buyer should instruct his representatives, agents, or his surveyors, to investigate such details as the buyer desires validated. This vessel or yacht is offered subject to prior sale, price change, or withdrawal without notice.

# PHOTOS



### Nav Station



### Extra Single



**Guest Stateroom Starboard**



**Guest Stateroom Port**



**Foredeck**



**Foredeck**



Oct. 2011 Haulout



---

# CONTACTS

---

Andrey Shestakov, leading yacht broker of the sales department of Shestakov Yacht Sales Inc. Shestakov Yacht Sales Inc., the official representative of the Miami/Fort Lauderdale FL headquarters.

---

## Contact details

---

Email: [andrey@shestakovyachtsales.com](mailto:andrey@shestakovyachtsales.com)

Web: [shestakovyachtsales.com/en/](http://shestakovyachtsales.com/en/)

---

## Telephones

---

USA: +1(954)274-4435

---

## Office hours

---

Monday – Saturday: **9:00 - 21:00** EDT

Sunday: **closed**

---

## Address

---



Harbour Towne Marina, 850 NE 3rd St,  
STE 213, Dania, FL 33004