

STARLIGHT EXPRESS — PRIVILEGE



Builder: PRIVILEGE

Year Built: 2005

Model: Catamaran

Price: PRICE ON APPLICATION

Location: United States

LOA: 39' 0" (11.89m)

Beam: 21' 6" (6.55m)

Min Draft: 3' 11" (1.19m)

Our experienced yacht broker, Andrey Shestakov, will help you choose and buy a yacht that best suits your needs **Starlight Express — PRIVILEGE** from our catalogue. Presently, at Shestakov Yacht Sales Inc., we have a wide variety of yachts available on our sale's list. We also work in close contact with all the big yacht manufacturers from all over the world.

If you would like to buy a yacht **Starlight Express — PRIVILEGE** or would like help answering any questions concerning purchasing, selling or chartering a yacht, please call **+1(954)274-4435**

TABLE OF CONTENTS

TABLE OF CONTENTS	2
SPECIFICATIONS	5
Overview	5
Basic Information	5
Dimensions	5
Speed, Capacities and Weight	5
Accommodations	5
Hull and Deck Information	6
Engine Information	6
DETAILED INFORMATION	7
Accommodations	7
Galley	7
Engine /Mechanical Equipment	8
Sails and Rigging	8
Deck & Equipment	9
Electronics and Navigational Equipment	9
Electrical	10
Exclusions	10
Disclaimer	10
PHOTOS	11
Bow View	11
Port Profile	11
Stern View	11
Plenty of Room for Guests!	11
Large Shaded Cockpit	11
Cockpit Cushions & Teak Table	11
Cockpit table	12
Layout	12

Salon	12
Station and Refrigerator	12
To stbd hull	12
Galley	12
To port hull	13
Plenty of natural light	13
Master berth	13
Master Head area	13
Head and shower	13
Stbd passageway storage	13
Stbd Guest berth	14
Stbd shower stall	14
Manual Head	14
Vanity	14
Port Escape Hatch	14
Engine Under Berth	14
New Phasor Diesel Engine 2012	15
Inverter	15
Engine Under Port Berth	15
Phasor Diesel 60 Hours	15
Electric Panel	15
Port View	15
Freshly Detailed	16
Bow Seats and Trampolines	16
Triple Lifelines and High Stanchions	16
Roller Furler	16
Anchor	16
Electric Windlass and Divided Locker	16
Helm	17

Wide Transom Steps	17
Mast and Rigging	17
Main in Stack Pack	17
Privilege 395	17
Lines to Cockpit	17
Lines to Cockpit	18
View from Helm	18
Bimini Top	18
Helm	18
Helm Controls	18
Traveller Winch	18
Sleek Lines	19
Underway	19
It's your turn!	19
CONTACTS	20
Contact details	20
Telephones	20
Office hours	20
Address	20

SPECIFICATIONS

Overview

**Sail away to your dream destination. This may just be the one! Offers Encouraged!
Motivated Seller!**

Panoramic view, exceptional interior wood finish, tasteful decor and generous shaded cockpit. Owner version, sleeps 6 in 3 Stateroom/2 head layout, galley up model. Previous Boat show demo boat with one owner. 2 New 29 hp Phasor Diesel engines (2012) with straight shafts. Freshly detailed!

Basic Information

Category: Catamaran

Model Year: 2005

Year Built: 2005

Country: United States

Dimensions

LOA: 39' 0" (11.89m)

Beam: 21' 6" (6.55m)

Min Draft: 3' 11" (1.19m)

Clearance: 51' 3" (15.62m)

MFG Length: 39' 2" (11.94m)

Speed, Capacities and Weight

Water Capacity: 124 Gallons

Holding Tank: 22 Gallons

Fuel Capacity: 26 Gallons

Accommodations

Total Cabins: 3

Total Heads: 2

Hull and Deck Information

Hull Material: Fiberglass

Engine Information

Engines: 2

Manufacturer: Phasor

Model: Kubota

Engine Type: Inboard

Fuel Type: Diesel

DETAILED INFORMATION

Accommodations

Upon entering the sliding lexan door, you will enjoy the panoramic windows and tastefully decorated interior. The large U shaped upholstered settee and high gloss finished table is to port. Opposite is the navigation area and electric panel. The galley is beside the entry door to starboard. Both side have wide steps leading to the hulls. The Port hull has an cabin aft, built in desktop w/stool, and a generous head with separate shower stall. Steps lead to the midship master cabin forward. The starboard hull has another cabin aft, plenty of storage cabinets along hull and forward head w/shower.

- Upholstered settee
- High gloss table
- Exquisite Pearwood cabinetry throughout
- Nav desk with pull out desk
- Round movable stool
- Steps down to hulls
- Privacy partition door and sliding counter at starboard hull entry extend galley up space and create a private suite
- Overhead lights
- Laminate floor (Teakwood)
- Sunbrella Curtains
- Opening hatches w/screens
- Oceanair overhead shades/screens
- Escape hatch in each hull
- 6'2" headroom
- Master berth in forward center suite 6'5" X4'6"
- Master berth with 2 headlamp-shade
- Owner private head/shower in port bow
- Dressing area with seat
- Vanity desk with stool
- 2 large double berths in the aft cabins 6'5" x 5'2"
- Large separate shower stall in starboard bow
- Head with sink opposite in starboard bow
- Generous hanging lockers and storage in both hulls
- Corian counters in heads
- Brass clock

Galley

Fully equipped L shaped galley-up.

- Coolmatic 12V fridge front loading
- Eno Gas stove/oven with 3 burners flame deflector
- Deep Stainless steel sink
- Laminate counter
- Pressure water system
- Hot water heater
- Storage cabinets and lift up bins
- Excellent provisioning room in starboard hull cabinets

Engine /Mechanical Equipment

- **(2) 29 hp PHASOR Diesel engines 2012 - 270 hours**
- **Straight shafts**
- 60 gal fuel
- Engine blowers
- Dual engine access under aft berths
- Alum fuel tanks
- Fresh water cooled
- Heat exchanger
- Air conditioner

Sails and Rigging

- Profurl Roller furling system
- Genoa 341' sq ft
- Fully battened Mainsail 541' sq ft
- 3 Reef lines
- Stack pack system w/ lazyjacks
- Mainsail car battens system
- Rope clutches for halyards
- Deck stepped mast
- External SS chainplates
- 1 40 Harken ST winch on mast
- 2 Harken 44 2S ST winches in cockpit
- White painted aluminum mast
- White painted aluminum boom
- 1 set of spreaders
- Leather spreader boots
- Traveller
- 2 genoa tracks
- Deck lights
- Mooring light

- Steaming light
- Navigation lights

Deck & Equipment

Very nice cockpit with built in seating and teak grate table. Good storage lockers. Wide transom steps with handrails for easy entry to boat. New helm seat. Good visibility.

- Lewmar electric windlass vertical
- 40lb CQR w/100' chain/150' rode
- SS bow Pulpits w/ seats
- New trampolines
- LIFERAFT - current certification
- Tall SS stanchions
- 3 SS lifelines
- 7 SS cleats
- 2 SS handrails on coachroof
- Sail locker in each front bow hull
- Wide transoms steps
- SS handrails on transoms
- Swim ladder
- Rubber protection on aft transoms
- Bottom paint
- Liferaft stern mounted
- Helm station at coachroof
- Edson steering
- Raised helm seat
- Leather wrapped wheel
- Built in cockpit seating
- Blue Cockpit cushions
- Bimini top on SS frame
- Sliding entrance door and sliding window at galley
- 1 Teak grate cockpit table
- Cockpit storage bins
- Covers on windshields
- Central cockpit scupper
- Fenders and 4 lines
- Flares
- 5 PFD's

Electronics and Navigational Equipment

- Garmin GPSmap 441S Chartplotter

- Garmin GPSMap740 blue chip
- Raymarine ST60 wind, speed, depth
- Raymarine Autopilot 6001 Plus
- Clarion - CD-AM/FM Radio (NEW 2012)
- 4 speakers (2/salon, 2/cockpit)
- VHF Icom - M412 (NEW 2012)

Electrical

- 2 NEW Start Batteries - (NEW 2013)
- 2 NEW House Bank Batteries - (NEW 2013)
- NEW Solar Panel - (NEW 2012)
- Shore power cord 30 AMP
- (3)120 VAC receptables w/GFI
- 110V Circuit with isolation transformer
- Rewired to single circuit breaker panel
- 120/12 voltage system
- Link 10 battery monitor
- Invertor

Exclusions

Owner's personal belongings.

Disclaimer

The Company offers the details of this vessel or yacht in good faith but cannot guarantee or warrant the accuracy of this information nor warrant the condition of the vessel. A buyer should instruct his representatives, agents, or his surveyors, to investigate such details as the buyer desires validated. This vessel or yacht is offered subject to prior sale, price change, or withdrawal without notice.

PHOTOS

Bow View



Port Profile



Stern View



Plenty of Room for Guests!



Large Shaded Cockpit



Cockpit Cushions & Teak Table



Cockpit table



Layout



Salon



Station and Refrigerator



To stbd hull



Galley



Plenty of natural light



To port hull



Master berth



Master Head area



Head and shower



Stbd passageway storage



Stbd Guest berth



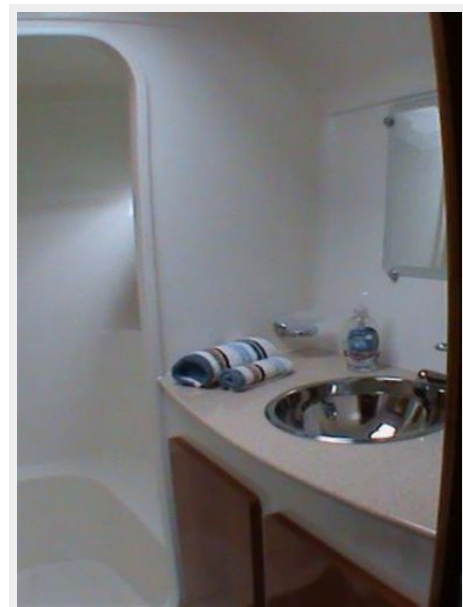
Stbd shower stall



Manual Head



Vanity



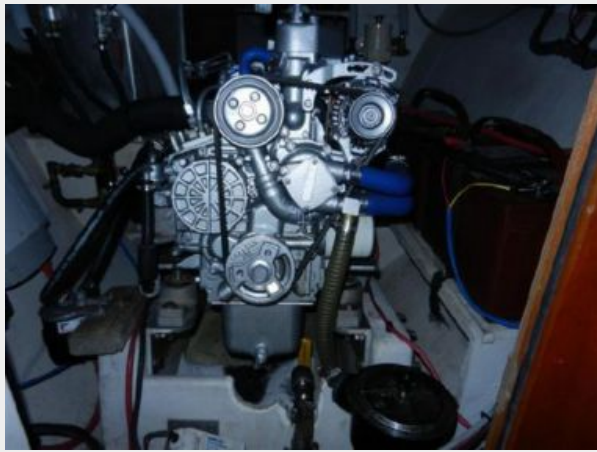
Port Escape Hatch



Engine Under Berth



New Phasor Diesel Engine 2012



Inverter



Engine Under Port Berth



Phasor Diesel 60 Hours



Electric Panel



Port View



Freshly Detailed



Bow Seats and Trampolines



Triple Lifelines and High Stanchions



Roller Furler



Anchor



Electric Windlass and Divided Locker



Helm



Wide Transom Steps



Mast and Rigging



Main in Stack Pack



Privilege 395



Lines to Cockpit



Lines to Cockpit



View from Helm



Bimini Top



Helm



Helm Controls



Traveller Winch



Underway



Sleek Lines



It's your turn!



CONTACTS

Andrey Shestakov, leading yacht broker of the sales department of Shestakov Yacht Sales Inc. Shestakov Yacht Sales Inc., the official representative of the Miami/Fort Lauderdale FL headquarters.

Contact details

Email: andrey@shestakovyachtsales.com

Web: shestakovyachtsales.com/en/

Telephones

USA: +1(954)274-4435

Office hours

Monday – Saturday: **9:00 - 21:00** EDT

Sunday: **closed**

Address



Harbour Towne Marina, 850 NE 3rd St,
STE 213, Dania, FL 33004