

## MANY HAPPY RETURNS — PACEMAKER



**Builder:** PACEMAKER

**Year Built:** 1991

**Model:** Sport Fisherman

**Price:** PRICE ON APPLICATION

**Location:** United States

**LOA:** 37' 0" (11.28m)

**Beam:** 14' 0" (4.27m)

**Cruise Speed:** 22 Kts. (25 MPH)

**Max Speed:** 26 Kts. (30 MPH)

Our experienced yacht broker, Andrey Shestakov, will help you choose and buy a yacht that best suits your needs **Many Happy Returns — PACEMAKER** from our catalogue. Presently, at Shestakov Yacht Sales Inc., we have a wide variety of yachts available on our sale's list. We also work in close contact with all the big yacht manufacturers from all over the world.

If you would like to buy a yacht **Many Happy Returns — PACEMAKER** or would like help answering any questions concerning purchasing, selling or chartering a yacht, please call **+1(954)274-4435**

---

# TABLE OF CONTENTS

---

TABLE OF CONTENTS	2
SPECIFICATIONS	3
Overview	3
Basic Information	3
Dimensions	3
Speed, Capacities and Weight	3
Hull and Deck Information	3
Engine Information	4
DETAILED INFORMATION	5
Navigation & Electronics	5
Accommodations	5
Electrical	5
Galley	6
Miscellaneous	6
Exclusions	6
Disclaimer	6
PHOTOS	8
CONTACTS	12
Contact details	12
Telephones	12
Office hours	12
Address	12

---

# SPECIFICATIONS

---

## Overview

---

Repowered by Cummins 370HP 6BTA's with LOW HOURS, New Kobata 9.5kW Generator, Furuno & Simrad Electronics, Teak Covering boards, Rupp Outriggers. A well cared for vessel with fresh motors and gen/set.

MOTIVATED SELLER ENCOURAGING OFFERS!

## Basic Information

---

**Category:** Sport Fisherman

**Sub Category:** Convertible

**Model Year:** 1991

**Year Built:** 1991

**Country:** United States

**Cockpit:** Yes

## Dimensions

---

**LOA:** 37' 0" (11.28m)

**Beam:** 14' 0" (4.27m)

## Speed, Capacities and Weight

---

**Cruise Speed:** 22 Kts. (25 MPH)

**Max Speed:** 26 Kts. (30 MPH)

**Displacement:** 22000 Pounds

**Water Capacity:** 85 Gallons

**Holding Tank:** 40 Gallons

**Fuel Capacity:** 450 Gallons

## Hull and Deck Information

---

**Hull Material:** Fiberglass

---

## Engine Information

---

**Engines:** 2

**Manufacturer:** Cummins

**Engine Type:** Inboard

**Fuel Type:** Diesel

---

## DETAILED INFORMATION

---

### Navigation & Electronics

---

- Simrad Shipmate CP 32 GPS/Plotter
- Furuno FCV-582 Depth/Fish Finder
- Simrad AP-11 Auto Pilot
- Furuno Radar
- Icom M-402 VHF
- SiTex XJ-1 Loran-C
- ST-500 Temp Gauge
- Bennett Trim Tabs
- Murphy Digital Tachs
- Running & Anchor Lights

### Accommodations

---

Entering the salon from the cockpit, the Galley is to starboard and the dinette is to port.

- Norcold Ref/Freezer
- Princess 2 Burner Stove
- Sharp Microwave
- Sharp 13" TV
- Lunaire Marine A/C
- Engine Room Access
- 12vDC & 110vAC Lighting

Guest stateroom is to port w over/under berths, hanging locker and storage drawers. Across to starboard is the head and features a stall shower, vanity, sink, storage cabinets and electric head. Master stateroom is forward in the bow and features a island queen berth, hanging lockers, deck hatch and A/C controls.

### Electrical

---

- NEW in 2010 is a 9.5kW Kobata Stamford Generator(2 hrs)
- 30amp shore power service

- ConstaVolt Battery Charger
- Multiple Battery Banks
- Perko Battery Switches

---

## Galley

---

- Norcold Ref/Freezer
- Sharp Microwave
- Princess 2 Burner Stove
- Storage Cabinets and Drawers
- Seaward 6 Gallon Water Heater

---

## Miscellaneous

---

- Hard Top
- 3/4 Enclosure
- Rupp Outriggers
- Fighting Chair
- In-Deck Fish Box
- Tackle Center
- Teak Covering Boards
- Sunbrella Covers for Helm/Chairs/Electronics/Cockpit
- Transom Door
- Three Bilge Pumps
- Salt & Fresh Water Washdowns
- Fish Box Macerator
- Head Macerator
- Oil Exchange Change Pump System

---

## Exclusions

---

Owner's personal belongings.

---

## Disclaimer

---

The Company offers the details of this vessel or yacht in good faith but cannot guarantee or

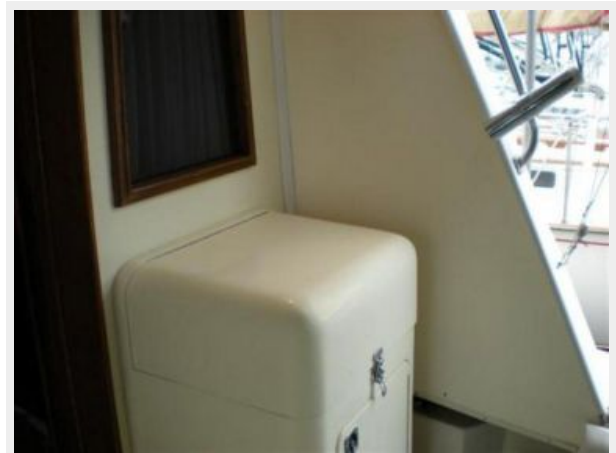
warrant the accuracy of this information nor warrant the condition of the vessel. A buyer should instruct his representatives, agents, or his surveyors, to investigate such details as the buyer desires validated. This vessel or yacht is offered subject to prior sale, price change, or withdrawal without notice.

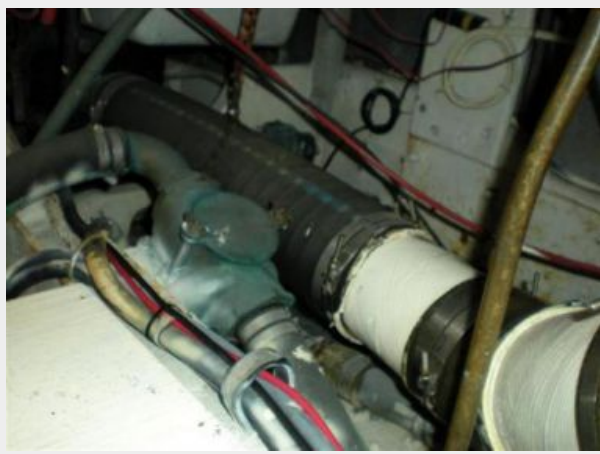
# PHOTOS











# CONTACTS

---

Andrey Shestakov, leading yacht broker of the sales department of Shestakov Yacht Sales Inc. Shestakov Yacht Sales Inc., the official representative of the Miami/Fort Lauderdale FL headquarters.

## Contact details

---

Email: [andrey@shestakovyachtsales.com](mailto:andrey@shestakovyachtsales.com)

Web: [shestakovyachtsales.com/en/](http://shestakovyachtsales.com/en/)

## Telephones

---

USA: +1(954)274-4435

## Office hours

---

Monday – Saturday: **9:00 - 21:00** EDT

Sunday: **closed**

## Address

---



Harbour Towne Marina, 850 NE 3rd St,  
STE 213, Dania, FL 33004