

NO NAME — BROWARD



Builder: BROWARD

Year Built: 1980

Model: Mega Yacht

Price: PRICE ON APPLICATION

Location: United States

LOA: 70' 0" (21.34m)

Beam: 17' 5" (5.31m)

Min Draft: 5' 0" (1.52m)

Cruise Speed: 12 Kts. (14 MPH)

Max Speed: 14 Kts. (16 MPH)

Our experienced yacht broker, Andrey Shestakov, will help you choose and buy a yacht that best suits your needs **No Name — BROWARD** from our catalogue. Presently, at Shestakov Yacht Sales Inc., we have a wide variety of yachts available on our sale's list. We also work in close contact with all the big yacht manufacturers from all over the world.

If you would like to buy a yacht **No Name — BROWARD** or would like help answering any questions concerning purchasing, selling or chartering a yacht, please call **+1(954)274-4435**

TABLE OF CONTENTS

TABLE OF CONTENTS	2
SPECIFICATIONS	4
Basic Information	4
Dimensions	4
Speed, Capacities and Weight	4
Accommodations	4
Hull and Deck Information	4
Engine Information	5
DETAILED INFORMATION	6
Introduction	6
Main Salon	6
Galley	6
Master Stateroom	7
Guest Port	7
Guest Starboard	7
Crew Quarters Located Forward	8
Safety Gear	8
Electronics and Helm	8
Bridge	8
Electrical	8
Engine Details & Mechanical Equipment	9
Mechanical Updates/Upgrades	9
Detailed Broker's Comments	10
Disclaimer	10
Exclusions	10
Disclaimer	10
PHOTOS	12
CONTACTS	15

Contact details	15
Telephones	15
Office hours	15
Address	15

SPECIFICATIONS

Basic Information

Category: Mega Yacht

Model Year: 1980

Year Built: 1980

Country: United States

Fly Bridge: Yes

Dimensions

LOA: 70' 0" (21.34m)

Beam: 17' 5" (5.31m)

Min Draft: 5' 0" (1.52m)

MFG Length: 70' 0" (21.34m)

Speed, Capacities and Weight

Cruise Speed: 12 Kts. (14 MPH)

Max Speed: 14 Kts. (16 MPH)

Displacement: 189597.54532 Pounds

Water Capacity: 600 Gallons

Fuel Capacity: 1917 Gallons

Accommodations

Total Cabins: 3

Hull and Deck Information

Hull Material: Aluminum

Engine Information

Engines: 2

Manufacturer: Detroit Diesel

Model: 8V92TI

Engine Type: Inboard

Fuel Type: Diesel

DETAILED INFORMATION

Introduction

We are pleased to offer this 1980 70' Broward "MON AMOUR" for worldwide sale! After 12 years of ownership the seller has decided to get out of yachting and move on to other passions. "MON AMOUR" has been a successful charter vessel in Boston Mass for years and has taken trips to Palm Beach on occasion. She is a (3) three stateroom, (3) three head flybridge motor yacht that has recently received extensive mechanical upgrades. She is priced aggressively with the understanding that her new owner will be updating her with new carpets, electronics, and soft goods. She carries a USCG COI for 49 passengers plus crew (54 total), covering LIMITED COASTWISE, LAKES, BAYS, and SOUNDS. COI expires OCT 31 2012.

INTERIOR REFIT NEEDED:

Pick out your carpets, soft goods, and electronics. Owner has held off and offered "Mon Amour" at a new aggressive price to so you can personalize this Broward Motor Yacht.

MAJOR 2010 UPDATES INCLUDE:

*New Turbos *New Walker AirSeps *Rebuilt Blowers*SEE COMPLETE LIST UNDER MECHANICAL

Owner is motivated! Please contact Worldwide Central Agent for information!

Main Salon

- Large Full Beam Salon
- Sectional Leather Couch
- (2)Two Leather Couches (aft)
- Wet Bar w/Cabinets and
- Stairs Below to Staterooms

Galley

- Kitchen Aid Refrigerator & Ice Maker
- Manitowoc QL30 Ice Maker

- Kenmore Elite Cooktop (208v, 9.5kw)
- Kenmore Garbage Disposal
- Kenmore Elite Dishwasher
- Norcold Trash Compactor
- GE Microwave 1.48kw
- SS Sink
- Cabinets and Counter
- Dinette with L-Shaped Couch

Master Stateroom

- Queen Bed
- Built in Drawers (starboard wall)
- Built in Dresser & Vanity (port wall)
- Hanging Lockers (port & starboard)
- Night Stands (port & starboard)
- En-Suite Head

Guest Port

- Twin Bunks
- En-Suite Head

Guest Starboard

- Twin Bunks
- En-Suite Head

Crew Quarters Located Forward

Safety Gear

- (2)Two Inflatable 25 Person Rafts
- 13' Boston Whaler w/50hp Evinrude ('06)
- 54 Adult and 6 Child Life Jackets
- Ring Buoys w/Safety Strobes (3) Three

Electronics and Helm

- Pilothouse
- Controls & Wheel
- Captains Bench Seat
- Ladder to Flybridge
- Electronics operation to be verified by buyer

Bridge

- Controls & Wheel
- U-Shaped Seating
- Wet Bar
- Davit
- Boston Whaler (13' w/50hp Evinrude)
- Electronics operation to be verified by buyer

Electrical

- 11/00 Newage/Isuzu 30kw, 220v Single Phase Gen (Port 375hrs)
- 10/98 Newage/Isuzu 20kw, 220v 3-Phase Gen (Stbd 475hrs)
- (note port gen engine replaced under warranty 11/02)
- 12v & 24v Battery Chargers
- Technicold Model 5 ton AC
- Electric Heat in Staterooms

Engine Details & Mechanical Equipment

- Cruise: 12 knots @ 1600rpm
- Top: 14knots @ 2200rpm
- Engines: Twin Detroit Diesel 8V92's
- Twin Turbo Intercooled
- 550hp x 2 = 1100hp
- Stbd 1150hrs SMOH (1996 Rebuild)
- Port 850hrs SMOH (1999 Rebuild)
- Engine Room Intake & Exhaust Engine Room Blowers
- Transmissions: Allison MH20
- Stbd Trans Rebuild 2004

Mechanical Updates/Upgrades

- Work completed December 2010
- Removed, disassembled and sandblasted:
 - Blowers intercoolers and mounting brackets
 - Thermostat housings air inlets on top of blowers
 - Pipes to charge air coolers pipes to heat exchangers
 - Throttle return spring brackets
 - Rebuilt blowers and inspected governors
 - Replaced thermostats
 - Replaced engine water pumps
 - De-scaled intercoolers
 - De-scaled heat exchangers
 - Replaced 4 turbochargers
 - Replaced turbo oil supply lines and adapters, all stainless and armored

- Replaced insulation jackets on turbos and on turbo inlet pipes
- Replaced primary/secondary fuel filters with Fleetguard FH230 Series Fuel Pro filters
- Replaced all fuel lines on engines, all stainless
- Installed 4 Walker AirSeps
- Replaced 24v alt. on port eng (12v alt on stbd is fairly new)
- Installed 12v electric priming pump
- Replaced all engine coolant hoses (silicone)
- Fabricated and replaced pipes for heater exchanger raw water discharges (stainless)
- Replaced macerator pump
- Replaced both engine battery disconnect switches and the single generator battery disconnect switch
- Replaced mounts for engine disconnect switches
- Fabricated new stainless steel battery trays for all batteries
- Fabricated new stainless raw water service manifold with stainless ball valves at all outlets (for head pumps, A/C circulator, etc.)

Detailed Broker's Comments

The seller has invested a great deal of money into the engine room during 2010. They have sea trialed her and she is ready to go. The new owner will most likely replace the interior with new carpet, furniture, etc. This is a great opportunity to get a 70 Broward at a bargain price!

Disclaimer

The Company offers the details of this vessel in good faith but cannot guarantee or warrant the accuracy of this information nor warrant the condition of the vessel. A buyer should instruct his agents, or his surveyors, to investigate such details as the buyer desires validated. This vessel is offered subject to prior sale, price change, or withdrawal without notice.

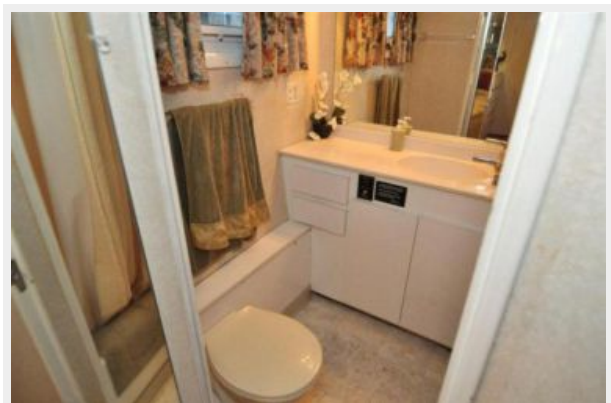
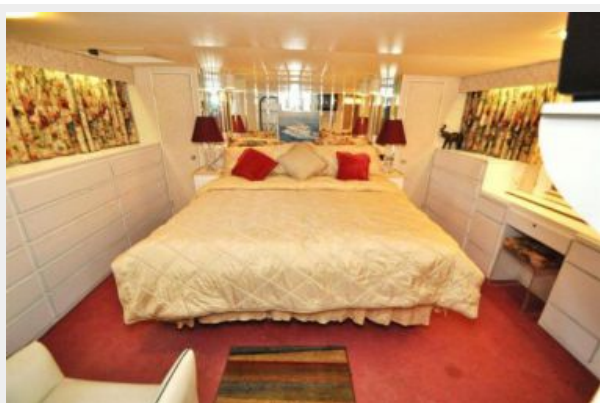
Exclusions

Owner's personal belongings.

Disclaimer

The Company offers the details of this vessel or yacht in good faith but cannot guarantee or warrant the accuracy of this information nor warrant the condition of the vessel. A buyer should instruct his representatives, agents, or his surveyors, to investigate such details as the buyer desires validated. This vessel or yacht is offered subject to prior sale, price change, or withdrawal without notice.

PHOTOS







CONTACTS

Andrey Shestakov, leading yacht broker of the sales department of Shestakov Yacht Sales Inc. Shestakov Yacht Sales Inc., the official representative of the Miami/Fort Lauderdale FL headquarters.

Contact details

Email: andrey@shestakovyachtsales.com

Web: shestakovyachtsales.com/en/

Telephones

USA: +1(954)274-4435

Office hours

Monday – Saturday: **9:00 - 21:00** EDT

Sunday: **closed**

Address



Harbour Towne Marina, 850 NE 3rd St,
STE 213, Dania, FL 33004