

KATALINA — TIARA



Builder: TIARA

Year Built: 2006

Model: Cruiser

Price: PRICE ON APPLICATION

Location: Mexico

LOA: 43' 0" (13.11m)

Beam: 14' 9" (4.50m)

Max Draft: 3' 7" (1.09m)

Cruise Speed: 22.593382292 Kts. (26 MPH)

Max Speed: 30.41416847 Kts. (35 MPH)

Our experienced yacht broker, Andrey Shestakov, will help you choose and buy a yacht that best suits your needs **KATALINA — TIARA** from our catalogue. Presently, at Shestakov Yacht Sales Inc., we have a wide variety of yachts available on our sale's list. We also work in close contact with all the big yacht manufacturers from all over the world.

If you would like to buy a yacht **KATALINA — TIARA** or would like help answering any questions concerning purchasing, selling or chartering a yacht, please call **+1(954)274-4435**

TABLE OF CONTENTS

| | |
|------------------------------|----|
| TABLE OF CONTENTS | 2 |
| SPECIFICATIONS | 3 |
| Overview | 3 |
| Basic Information | 3 |
| Dimensions | 3 |
| Speed, Capacities and Weight | 4 |
| Accommodations | 4 |
| Hull and Deck Information | 4 |
| Engine Information | 4 |
| DETAILED INFORMATION | 5 |
| Engine /Mechanical Equipment | 5 |
| Exclusions | 5 |
| Disclaimer | 5 |
| PHOTOS | 6 |
| ENGINE HRS | 7 |
| CONTACTS | 20 |
| Contact details | 20 |
| Telephones | 20 |
| Office hours | 20 |
| Address | 20 |

SPECIFICATIONS

Overview

Air-conditioned interior with cherry woodwork, ultra-leather upholstery, and teak sole.

Two staterooms, two head compartments, open salon with full galley.

- Forward Stateroom with Island Queen Berth, Under-Berth Storage, Hanging Locker, Flat Screen TV, and Ensuite Head Compartment
- Mid-Cabin Stateroom with Twin Berths, Filler Cushion for Double Berth, Under-Berth Storage, Hanging Locker, Flat Screen TV, and Ensuite Head Compartment
- Wraparound Convertible Settee with Dining Table
- 26" Flat Screen LCD TV
- Full Galley

Basic Information

Category: Cruiser

Sub Category: Express

Model Year: 2006

Year Built: 2006

Country: Mexico

Cockpit: Yes

Dimensions

LOA: 43' 0" (13.11m)

Beam: 14' 9" (4.50m)

Max Draft: 3' 7" (1.09m)

MFG Length: 43' 0" (13.11m)

Speed, Capacities and Weight

Cruise Speed: 22.593382292 Kts. (26 MPH) **Max Speed:** 30.41416847 Kts. (35 MPH)

Water Capacity: 110 Gallons

Holding Tank: 50 Gallons

Fuel Capacity: 375 Gallons

Accommodations

Total Cabins: 3

Total Berths: 6

Total Heads: 2

Hull and Deck Information

Hull Material: Fiberglass

Deck Material: Fiberglass

Hull Configuration: Deep Vee

Hull Color: WHITE

Hull Finish: Aluminum

Engine Information

Engines: 2

Manufacturer: Volvo

Model: IPS 500

Engine Type: Other

Fuel Type: Diesel

DETAILED INFORMATION

Engine /Mechanical Equipment

- Twin Volvo Penta IPS 500 Diesel Engines
- State-of-the-art Pod Drives
- Five-Zone Reverse Cycle HAC
- Onan 11.5kW Generator with Sound Shield
- Dual 30-amp Shore Power Connections
- Two-Bank Battery System with Charger

Exclusions

Owner's personal belongings.

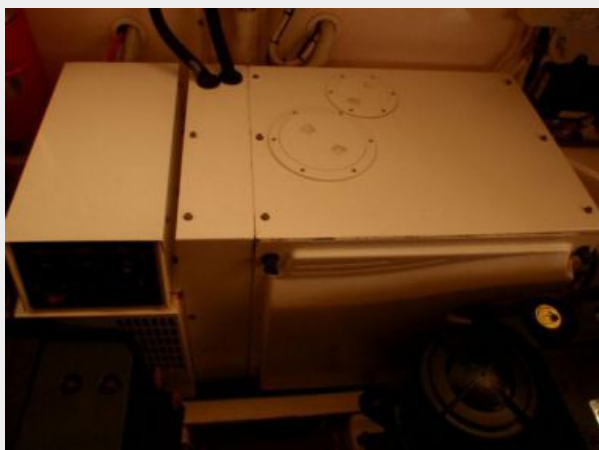
Disclaimer

The Company offers the details of this vessel or yacht in good faith but cannot guarantee or warrant the accuracy of this information nor warrant the condition of the vessel. A buyer should instruct his representatives, agents, or his surveyors, to investigate such details as the buyer desires validated. This vessel or yacht is offered subject to prior sale, price change, or withdrawal without notice.

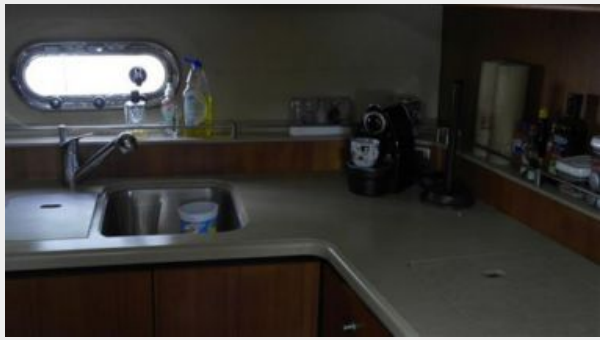
PHOTOS

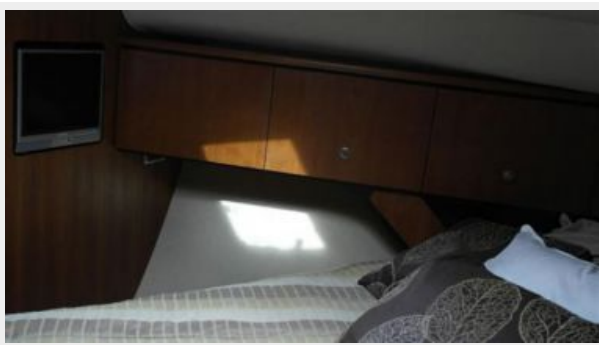
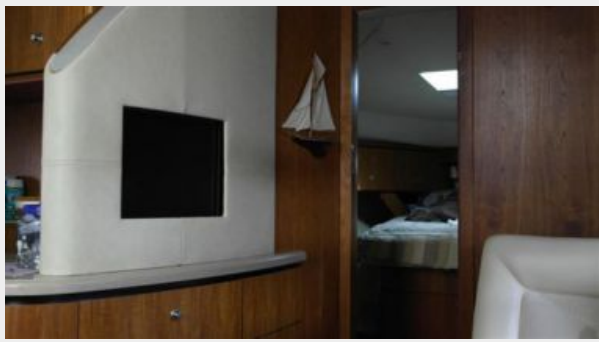


ENGINE HRS



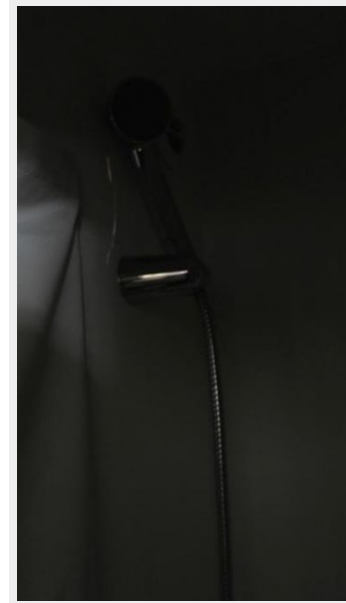
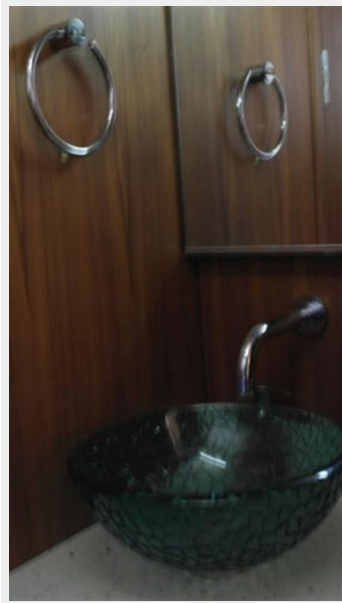




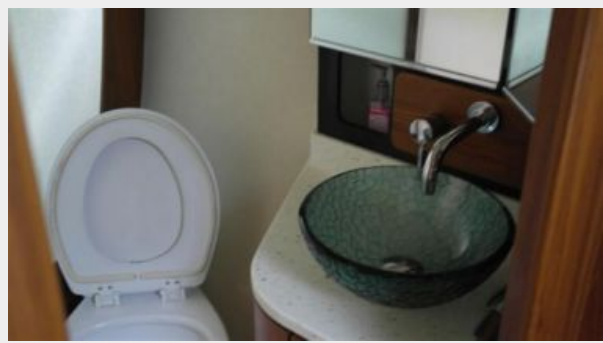




















CONTACTS

Andrey Shestakov, leading yacht broker of the sales department of Shestakov Yacht Sales Inc. Shestakov Yacht Sales Inc., the official representative of the Miami/Fort Lauderdale FL headquarters.

Contact details

Email: andrey@shestakovyachtsales.com

Web: shestakovyachtsales.com/en/

Telephones

USA: +1(954)274-4435

Office hours

Monday – Saturday: **9:00 - 21:00** EDT

Sunday: **closed**

Address



Harbour Towne Marina, 850 NE 3rd St,
STE 213, Dania, FL 33004