

DEVIL'S ADVOCATE — CAPE HORN



Судостроитель: CAPE HORN

Год постройки: 2002

Модель: Траулер

Цена: **ЦЕНА ЯХТЫ ПО ЗАПРОСУ**

Местонахождение: France

Длина общая: 75' 10" (23.10m)

Ширина: 21' 8" (6.60m)

Макс. осадка: 6' 7" (2.00m)

Крейс. скорость: 8 Kts. (9 MPH)

Макс. скорость: 11 Kts. (13 MPH)

Купить **DEVIL'S ADVOCATE — CAPE HORN** а также выбрать подходящую вам яхту из нашего каталога яхт вам поможет опытный яхтенный брокер Андрей Шестаков. На сегодняшний день компания **Shestakov Yacht Sales Inc.** имеет большое количество яхт в собственном списке продаж, а также тесно сотрудничает со всеми крупными яхтенными производителями по всему миру.

Для того чтобы купить яхту **DEVIL'S ADVOCATE — CAPE HORN** а также проконсультироваться по любому вопросу связанному с покупкой, продажей, чартером яхт позвоните по телефону **+7(918)465-66-44**.

ОГЛАВЛЕНИЕ

ОГЛАВЛЕНИЕ	2
ХАРАКТЕРИСТИКИ	4
Основная информация	4
Размеры	4
Скорость, вместимость и масса	4
Размещение	4
Корпус и палуба	5
Информация о двигателе	5
ПОДРОБНОЕ ОПИСАНИЕ	6
Accommodations	6
Deck Equipment	8
Electronics and Navigational Equipment	9
Engine /Mechanical Equipment	11
Tenders	13
Safety and Security	14
Air Conditioning	14
Galley	14
Entertainment Equipment	15
Generators & Electronics	15
Engineer Room	15
Исключения	16
Отказ от ответственности	16
ФОТОГРАФИИ	17
Main Saloon	17
Main Saloon	17
Galley	17
Main Saloon	17
Corridor towards Media Room/Library	18

Media Room / Library	18
Media Room / Library	18
Media Room / Library	18
Stairway towards Bridge deck	19
Bridge	19
Bridge	19
Bridge	19
Bridge deck saloon	19
КОНТАКТЫ	20
Контактная информация	20
Телефоны	20
Время работы	20
Адрес	20

ХАРАКТЕРИСТИКИ

Основная информация

Тип судна: Траулер

Подкатегория: Водоизмещение

Модельный год: 2011

Год постройки: 2002

Страна: France

Кубрик: Да

Размеры

Длина общая: 75' 10" (23.10m)

Ширина: 21' 8" (6.60m)

Макс. осадка: 6' 7" (2.00m)

Скорость, вместимость и масса

Крейс. скорость: 8 Kts. (9 MPH)

Дальность на крейсерской скорости:
5000

Макс. скорость: 11 Kts. (13 MPH)

Вместимость воды: 430.072100656
Gallons

Объем топливного бака: 7000.559378
Gallons

Расход топлива: 18.49204364 Gallons

Размещение

Всего кают: 4

Всего коек: 8

Спальные места: 9

Корпус и палуба

Материал корпуса: Steel

Материал палубы: Teak and Steel

Комплектация корпуса: Full Displacement

Цвет корпуса: Flag Blue

Дизайнер экстерьера: Chuck Neville

Информация о двигателе

Двигатели: 2

Производитель: Cummins

Модель: 370 N14

Тип двигателя: Inboard

Тип топлива: Diesel

ПОДРОБНОЕ ОПИСАНИЕ

Accommodations

No cost is spared to build her luxurious interior out of the finest, solid cherry wood with elegant intarsias. Connolly leather and fine cloths are used for the furniture and she is equipped with a state of the art Bose video surround systems in all cabins. Her galley is equipped with all modern MIELE appliances including trash compactor, macerator in the sink and 4 freezers. Finest English Wedgwood bone chinaware as well as Villeroy & Boch, the best cutlery and every imaginable kitchen accessory is on board for fine dining experience. Her very luxurious cabins with high quality mattresses, exquisite Egyptian cotton bedding guarantees the rest her passengers deserve.

When you enter the yacht via the hydraulic passerelle, you will pass the lovely enclosed aft deck, which offers the perfect setting for al fresco dining or a leisurely breakfast. When opening the watertight aft door that leads to the main saloon, you will be pleasantly impressed by the light, open and comfortable space it has to offer.

A large dining table that accommodates eight people is situated on the port side alongside the large windows that offer an excellent view while enjoying your meals.

On the starboard side, an L shaped sofa is the perfect spot for pre dinner drinks or for enjoying the lounge home entertainment and surround sound stereo system. Should you prefer to have a snack at the bar, a touch of a button opens up the four seated bar for you.

A very well equipped galley that can be closed off to the main saloon, features Miele and Sub Zero appliances and caters all your culinary needs.

Further forward and conveniently located amidships, the luxurious library offers the peace and quiet you might seek or the thrill of the latest blockbuster in front of the large plasma screen with top of the range surround sound system. This inviting and comfortable area, in which the cherry carpentry perfectly blends with the fine red leather sitting area and parquet floor, is just the place to enjoy either one of them and she offers an atmospheric fire place as well!

Going down to the lower deck via the beautiful staircase, you will find the master suite and three guest staterooms.

The Master Suite is a full beam suite located in the already stable center of the yacht. She leaves you the impression of being on a much larger yacht and invites you to relax in a homely atmosphere. The Master Suite is also fitted out with an atmospheric fireplace, a surround sound system and flat screen TV for your entertainment. She has an en suite bathroom with a Jacuzzi and indirect ambient lighting.

The Guest staterooms can be found further forward to the master suite and comprise of a split-level double bedded stateroom on portside with a private head and direct access to an oversized walk-in shower, a twin bedded stateroom to starboard with a private head and access to the walk-in shower and a large, Queen bedded stateroom with an independent home entertainment system and a large en-suite bathroom with shower.

The comfortable staterooms are fitted and furnished to the highest quality standards.

Going up, the wheelhouse offers full view all around and is equipped with all the latest necessary navigational equipment ensuring a safe passage. A large bespoke leather sofa can be extended to form a double bed while the captain is on watch and a bathroom and shower can be used without interfering with your guests. A small pantry completes this light and airy space.

The captain's bridge complete with seating area for guests is fully equipped including both 21" and 17" screens, 3D radar and worldwide maps, LW/SSB/VHF and 2 Satcom communication systems.

The sundeck offers ample space to enjoy the surroundings or the evening dinners made on her large stainless steel Barbeque.

The captain and guests can walk all around the wheelhouse to the Portuguese bridge where two side wing control stations are concealed in two of the lockers (port and starboard) to ensure perfect docking maneuvers. A third remote control station is situated on the lower stern deck.

New Bose hifi system installed (2012).

All rubber seals on port holes were replaced. Various carpentry jobs carried out all over boat, including installing new teak shelves in the utility room.

New galley boiler. All taps, heads and showers were decalcinated, fully cleaned and resealed.

All carpets professionally deep cleaned.

New floors and new carpet in lower deck corridor.

New carpets in all cabins on lower guest deck and on Captains bridge. Overhaul of Galley fridges, new teak floor in Galley (2010).

Exterior speakers installed on aft main deck.

Deck Equipment

Opacmare crane with new crane motor, electronics and handheld control (2010).

Installation of a new quick release shackle on crane for greater ease of handling and safety (2010).

Maxwell 6000 anchor winch and Maxwell 3500 warping winch, both overhauled (2010).

New hydraulic Passarelle (2010)

One Bruce 150 kg anchor and one 110 kg Bruce anchor with 150 meters of chain.

Deck repainted (2012).

Crane refit: New crane motor, electronics and handheld control.

Installation of a new quick release shackle on crane for greater ease of handling and safety.

Full service if windlass including new parts.

Deck controls for windlass renewed and re-sealed.

Teak deck treated and cleaned to highest standard.

Hull fully polished.

All new stainless steel latches, replacing former plastic latches.

Full professional deck painting in anti slip.

New passerelle.

New ceilings installed on the outer decks.

Electronics and Navigational Equipment

New Satellite TV and Inmarsat installed (2010).

New HD Raymarine Radar and full world charts system installed with flush LG screen on bridge (2010).

New wifi router on the bridge making the vessel is now fully covered by onboard wifi with cards for Spain, France and Italy (2010).

New Raytheon 72 miles radar was installed in addition to the existing 96 miles radar (2010)

A new AIS transceiver was installed (2010)

A New Icom VHF was installed and a new wind direction and wind speed meter (all 2010).

Three new floating and waterproof Icom handheld VHF Radios (2010).

Two new walk about walkie talkies (2010).

New Epson multifunction printer/fax/scanner for on board office use (2010).

Horizon Eclipse 25/1 W F3 DSC-VHF,

Icom M 1710 SSB SAT ACR,

Furuno Navtex NX 500, Furuno FAX 207,

Raytheon ST 60 Tridata, Raytheon ST60 windmeter,

Furuno GPS Navigator, Maxwell Chain counter, Jabsco searchlight,

Robertson AP 20, Simrad Roberston F 35,

Robertson R135 MK2 rudderangle, Interphase fishfinder.

New Satellite TV and Inmarsat phones (2012)

New HD Raymarine Radar and full world charts system installed with flush LG screen on bridge.

Thanks to a WIFI router on the bridge the vessel is fully covered by onboard WIFI with cards for Spain, France and Italy.

An additional new 72 miles radar was installed in addition to the existing 96 miles radar

A new AIS transceiver was installed.

A New Icom VHF was installed and a new wind direction and wind speed meter.

Three new floating and waterproof Icom handheld VHF Radios.

Two new walk about walkie talkies.

Various re-wiring projects. 220v in master cabin restored. New exterior 220v plug installed on top deck New multifunction printer/fax/scanner for on board office use.

New Satellite TV and Inmarsat installed (2010).

New HD Raymarine Radar and full world charts system installed with flush LG screen on bridge (2010).

New wifi router on the bridge making the vessel is now fully covered by onboard wifi with cards for Spain, France and Italy (2010).

New Raytheon 72 miles radar was installed in addition to the existing 96 miles radar (2010)

A new AIS transceiver was installed (2010)

A New Icom VHF was installed and a new wind direction and wind speed meter (all 2010).

Three new floating and waterproof Icom handheld VHF Radios (2010).

Two new walk about walkie talkies (2010).

New Epson multifunction printer/fax/scanner for on board office use (2010).

Horizon Eclipse 25/1 W F3 DSC-VHF,

Icom M 1710 SSB SAT ACR,

Furuno Navtex NX 500, Furuno FAX 207,

Raytheon ST 60 Tridata, Raytheon ST60 windmeter,

Furuno GPS Navigator, Maxwell Chain counter, Jabsco searchlight,

Robertson AP 20, Simrad Roberston F 35,

Robertson R135 MK2 rudderangle, Interphase fishfinder.

Engine /Mechanical Equipment

On starboard side, via a watertight sliding door leading to stairs, the large engine room is accessed. Ceiling height allows you to stand while operating all equipment.

The engine room has a second watertight access point, via the fully equipped laundry and tool-room, which leads off the master cabin suite.

The reliable, low hour, twin Cummings engines have just undergone a full service by Cummings. Both Onan generators have been serviced as well.

DEVIL'S ADVOCATE is equipped with 2 x CUMMINS 370 N14 with app. 1500 hours

Fully overhauled and serviced to both engines by Cummings Marseille (2011).

Engine room exhaust fans overhauled. (2010).

New fuel counter (in liters instead of gallons) has been installed in fuel system. (2010).

New bilge pumps installed for engine room (2010).

Full paint of engine room, including bilges, engines and detailed interiors (2010).

Her consumption is appr. 70 litres in total per hour doing 8 knots, app 120 liters an hour doing 11 knots

Range: app. 5000 miles @ 7,5 knots on a single engine

Gearbox: ZF

Full overhaul and service to both generators by Onan in 2010.

All fuel tanks inspected and forward fuel tanks cleaned, giving the vessel full range and fuel capacity.

Engine room exhaust fans overhauled.

Full service and upgrade made to AC unit. New protection for AC units installed. Full paint of engine room, including bilges, engines and detailed interiors.

New drainage system made for bilges.

New shore water system installed. New water pressure regulator installed. New fuel counter (in liters) has been installed in fuel system.

New top of the range bilge pumps installed for engine room.

New grey water pumps installed. All other pumps serviced.

Upgrade installation of second shore power cable.

Full overhaul and service to both engines by Cummings in 2011 and 2012.

Full overhaul and service to both engines by Cummings Marseille, some parts replaced (2012).

Complete revision of exhaust system (2012).

New ceiling and wall plating in engine room (2012).

Full overhaul and service to both generators by Onan in 2010 and serviced again 2012.

All fuel tanks inspected and forward fuel tanks cleaned, giving the vessel full range and fuel capacity.

Engine room exhaust fans overhauled.

Full service and upgrade made to AC unit. New protection for AC units installed. Full paint of engine room, including bilges, engines and detailed interiors.

New drainage system made for bilges.

New shore water system installed. New water pressure regulator installed. New fuel counter (in liters) has been installed in fuel system.

New top of the range bilge pumps installed for engine room.

New grey water pumps installed. All other pumps serviced.

Upgrade installation of second shore power cable.

Tenders

Avon 4 meter tender with 50 HP outboard engine HONDA, this tender was fully serviced, polished, and a new steering system was fitted, new custom made seats were made, support wires protected to prevent damage to tender. (2010)

New waterproof VHF radio in the tender was mounted with an antenna (2010).

The outboard was fully serviced and painted. (2010)

Seabob new 2010

New diving compressor 2010 and diving equipment

Ocean Kayak.

Tender fully serviced, polished, and a new steering system was fitted, outboard fully serviced and painted.

New custom made seats were made, support wires protected to prevent damage to tender.

New waterproof VHF radio in the tender was mounted with an antenna.

Adding a new diving compressor on the aft top deck.

New Seabob and inflatable donut installed.

DEVIL'S ADVOCATE is equipped with brand a new marine dive compressor and diving equipment.

Safety and Security

All fire extinguishers checked, re-filled and serviced.

Life rafts were serviced and the location was changed to the aft for balance and aesthetics. All safety and first aid kit revised, changed or upgraded where needed. New Flares.

Air Conditioning

MarineAir air-conditioning run by two AC Compressors throughout the yacht.

Full service and upgrade made to AC unit (2012).

New protection for AC units made (2010).

Eberspaecher hot air diesel heating throughout as well for colder climates.

Eberspaecher system completely overhauled (2012).

Galley

Fridges:	Sub Zero (overhauled 2010)
Stove:	Miele (renewed 2012)
Microwave:	GE Profile Performance
Extractor:	Yes
Trash:	KitchenAid trash compacter
Dishwasher:	Miele G 881 SC Turbothermic Plus

Icemaker: Sub Zero

Washing: AEG Öko Lavamat 86820

Drying: AEG Lavatherm 57700

Various: New galley floor (2010), new galley boiler (2010).

Entertainment Equipment

The yacht is equipped with flat screen TV's in all the cabins as well as the saloon and the library. Satellite TV, DVD / Video and Audio system and a wifi router offers you and your guests the latest in entertainment and communication.

Exclusions:

Owner's personal effects, books, artwork.

Generators & Electronics

Generators: 2 x Onan type MDKAF-3386645, 22,5 KW Full overhaul and service to both generators by ONAN, Some

parts replaced (2010), Fully serviced again in 2012.

Electricity: 220 V / 24 V 3 phase

Shore power: 230 V / 50 Hz single phase

Upgrade on shore power cable by installing second unit (2010)

Invertors: New Victron charges installed (2012)

Batteries: Gel

Other: Various re-wiring projects were done in 2010. New exterior 220v plug installed on top deck (2010).

Instant hot water maker 'Artic system' installed (2012).

Engineer Room

Engines: 2 x CUMMINS 370 N14 with app. 1750 hours (nov 2012)

Full overhaul and service to both engines by Cummings Marseille, parts replaced (2012). Engines repainted (2012), Bilges repainted (2012). Complete revision of exhaust system (2012). Complete refit of the cooling system (2012). New ceiling and wall plating in engine room (2012). Engine room exhaust fans overhauled. (2012). New fuel counter (in liters instead of gallons) has been installed in fuel system. (2010). New bilge pumps installed for engine room (2010). Full paint of engine room, including bilges, engines and detailed interiors (2010).

Consumption: app 70 litres in total per hour doing 8 knots, app 120 an hour doing 11 knots

Range: app. 5000 miles @ 7,5 knots on a single engine

Gearbox: ZF

Исключения

При продаже яхты исключаются личные вещи владельца.

Отказ от ответственности

Компания предоставляет описание судна или яхты добросовестно, но не может гарантировать точность этой информации, а также не ручается за техническое состояние. Покупатель должен проинструктировать своих агентов или оценщиков исследовать представленную информацию более подробно, по собственному желанию. Продажа судна или яхты, изменение цены или снятие с продажи будет происходить без предварительного уведомления.

ФОТОГРАФИИ

Main Saloon



Main Saloon



Main Saloon



Galley



Corridor towards Media Room/Library



Media Room / Library



Media Room / Library



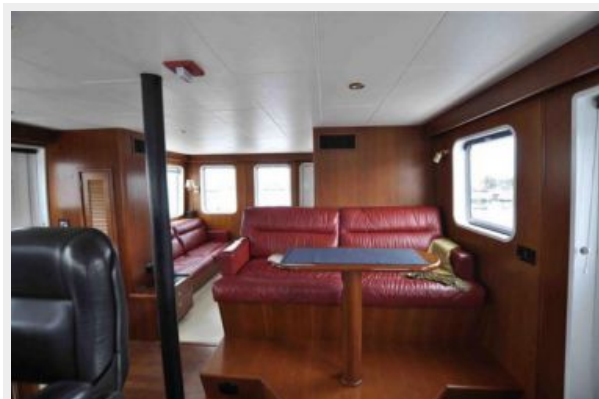
Media Room / Library



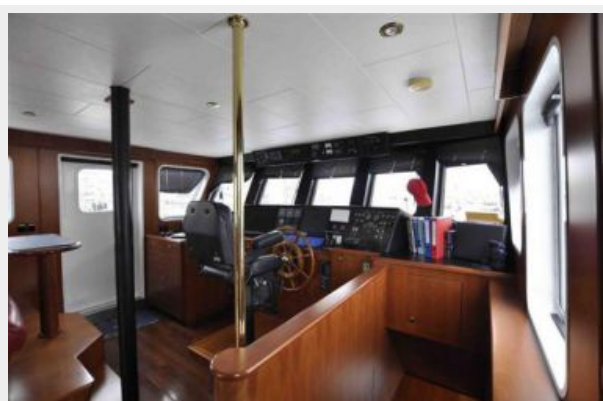
Stairway towards Bridge deck



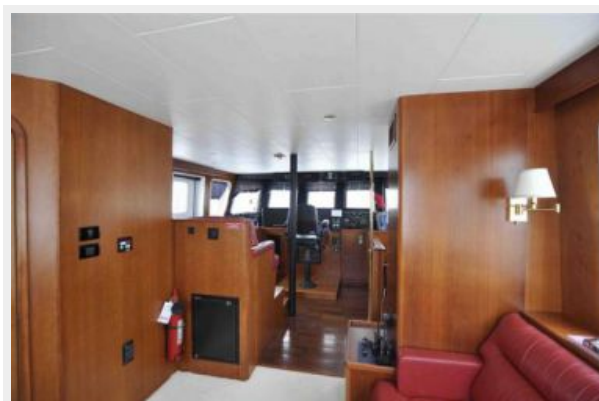
Bridge



Bridge



Bridge



Bridge deck saloon



КОНТАКТЫ

Андрей Шестаков (Andrey Shestakov) – ведущий яхтенный брокер отдела продаж яхт и судов компании Shestakov Yacht Sales Inc. Официальный представитель Shestakov Yacht Sales Inc. для русскоговорящих клиентов в центральном офисе компании в Майами/Форт Лодердейл/Флорида/США.

Контактная информация

Email: andrey@shestakovyachtsales.com

Web: shestakovyachtsales.com

Телефоны

Краснодарский край: **+7(918)465-66-44**

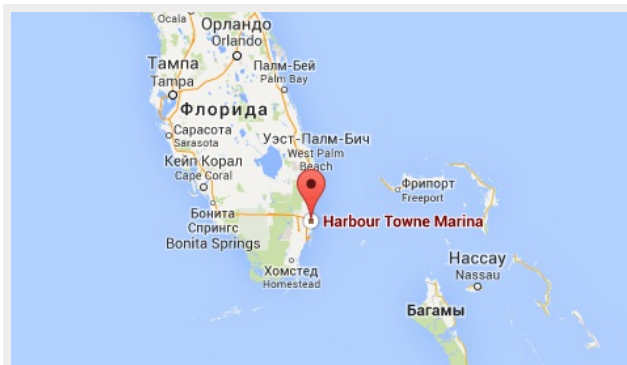
США, Майами, Флорида: **+1(954)274-4435**

Время работы

Понедельник – Суббота: **9:00 - 21:00**
EDT

Воскресенье: **Закрито**

Адрес



Harbour Towne Marina, 850 NE 3rd St,
STE 213, Dania, FL 33004