

## ITACA — SUNSEEKER



**Судостроитель:** SUNSEEKER

**Год постройки:** 2008

**Модель:** Моторная яхта

**Цена:** ЦЕНА ЯХТЫ ПО ЗАПРОСУ

**Местонахождение:** Mexico

**Длина общая:** 64' 4" (19.61m)

**Ширина:** 16' 5" (5.00m)

**Мин. осадка:** 4' 11" (1.50m)

**Макс. осадка:** 4' 11" (1.50m)

**Крейс. скорость:** 23 Kts. (26 MPH)

**Макс. скорость:** 30 Kts. (35 MPH)

Купить **ITACA — SUNSEEKER** а также выбрать подходящую вам яхту из нашего каталога яхт вам поможет опытный яхтенный брокер Андрей Шестаков. На сегодняшний день компания **Shestakov Yacht Sales Inc.** имеет большое количество яхт в собственном списке продаж, а также тесно сотрудничает со всеми крупными яхтенными производителями по всему миру.

Для того чтобы купить яхту **ITACA — SUNSEEKER** а также проконсультироваться по любому вопросу связанному с покупкой, продажей, чартером яхт позвоните по телефону **+7(918)465-66-44**.

# ОГЛАВЛЕНИЕ

ОГЛАВЛЕНИЕ	2
ХАРАКТЕРИСТИКИ	3
Обзор	3
Основная информация	3
Размеры	3
Скорость, вместимость и масса	3
Размещение	4
Корпус и палуба	4
Информация о двигателе	4
ПОДРОБНОЕ ОПИСАНИЕ	5
Accommodations	5
Aft deck	5
Cockpit	6
Galley	6
Salon	6
Brokerage	6
Deck Equipment	7
Features	7
Hull	7
Исключения	8
Отказ от ответственности	8
ФОТОГРАФИИ	9
КОНТАКТЫ	17
Контактная информация	17
Телефоны	17
Время работы	17
Адрес	17

# ХАРАКТЕРИСТИКИ

## Обзор

THIS IS A ONE OWNER VESSEL IN VERY GOOD CONDITION, CAPTAIN & CREW 24 HRS ON IT., OWNER MOTIVATED.....

## Основная информация

Тип судна: Моторная яхта

Подкатегория: Flybridge

Модельный год: 2008

Год постройки: 2008

Страна: Mexico

Открытая палуба мостика: Да

Кубрик: Да

## Размеры

Длина общая: 64' 4" (19.61m)

Длина по ватерлинии: 48' 2" (14.68m)

Ширина: 16' 5" (5.00m)

Мин. осадка: 4' 11" (1.50m)

Макс. осадка: 4' 11" (1.50m)

Длина привального бруса: 64' 4"  
(19.61m)

## Скорость, вместимость и масса

Крейс. скорость: 23 Kts. (26 MPH)

Макс. скорость: 30 Kts. (35 MPH)

Вместимость воды: 184.9204364 Gallons

Объем топливного бака: 792.516156  
Gallons

## Размещение

---

**Всего кают:** 3

**Всего коек:** 5

**Спальные места:** 6

**Всего ком. состава:** 3

**Каюты экипажа:** 1

**Койки экипажа:** 2

**Спальных мест экипажа:** 2

**Комм. состав экипажа:** 1

## Корпус и палуба

---

**Материал корпуса:** Fiberglass

**Материал палубы:** Teak over Fiberglass

**Цвет корпуса:** BLUE

**Отделка корпуса:** Aluminum

## Информация о двигателе

---

**Двигатели:** 2

**Производитель:** Caterpillar

**Модель:** C-15

**Тип двигателя:** I/O

**Тип топлива:** Diesel

---

# ПОДРОБНОЕ ОПИСАНИЕ

---

## Accommodations

---

**Master Aft Cabin** Double berth 2 x reading lights 24v Outboard shelving Bedside cupboards Hanging wardrobe Dressing table with stool Settee Halogen overhead lighting 24v 2 large opening portholes and 4 x fixed with curtains 2 x double AC socket Flatscreen television Fitted carpet

**Master en Suite Shower Room** Vacuum toilet Avonite counter top Washbasin Taps and accessories Separate shower compartment Extractor fan Mirrored vanity unit Shelved cupboard Toothbrush and glass holder Towel ring and towels Halogen overhead light 24v Opening porthole with mosquito screen and blind Shaver socket 240/110v

**VIP Forward Stateroom** Double berth Drawers and storage beneath Wardrobe with mirrored doors Halogen overhead lights 24v 2 x reading lights 24v 2 x opening portholes with mosquito screen and curtains Deck hatch with screen Double 240 v AC socket Flatscreen television Door to en suite toilet/shower Fitted carpet

## Aft deck

---

**Deck** Fittings all in stainless steel 8 x deck cleats in stainless steel Delta anchor and 45m chain (galvanised) Electric winch and capstan 24v with deck and cockpit controls 24 Stemhead roller and anchor stop Self draining chain locker-fender stowage Pulpit and cockpit rails in stainless steel Stainless steel fendering with rubber insert IMCO navigation lights 2 x Pantograph wipers 24v, windscreen washers Ensign staff and socket 6 x fenders and 4 warps Remote spotlight 24v Curved safety glass windscreen

**Deck** Fittings all in stainless steel 8 x deck cleats in stainless steel Delta anchor and 45m chain (galvanised) Electric winch and capstan 24v with deck and cockpit controls 24 Stemhead roller and anchor stop Self draining chain locker-fender stowage Pulpit and cockpit rails in stainless steel Stainless steel fendering with rubber insert IMCO navigation lights 2 x Pantograph wipers 24v, windscreen washers Ensign staff and socket 6 x fenders and 4 warps Remote spotlight 24v Curved safety glass windscreen

## Cockpit

---

**Aft Cockpit** Self-draining Moulded staircase to flybridge Transom storage locker Upholstered seating Transom safety door Engine room access hatch Overhead lighting 24v Low-level courtesy lighting 24v 2 external speakers Teak-laid cockpit and steps Boat hook Hand-held fire extinguisher

## Galley

---

**Galley** Sink and drainer Electric refrigerator Electric freezer 2 x Redding lights 12v Hanging wardrobe Halogen overhead lighting 2 x opening portholes with mosquito Screen and curtains Deck hatch Door to toilet/shower Double AC socket Flatscreen television Fitted carpet

## Salon

---

**Saloon** Large dining area with folding dining table Lower saloon seating Stainless steel sliding cockpit door to aft deck Drinks cabined Flatscreen television DVD hi-fi surround system CD/radio for external speakers Halogen overhead lighting 24v 2 x double AC socket Main switch panel (AC/DC) with circuit breaker protection and generator controls Choice of lacquered interior finishes and veneer Scatter cushions Fitted carpet

## Brokerage

---

**Additional Items** Navy Blue Hull Electric BBQ Grill - Gaganeau lava coal at flybridge Electric cooling unit for cool box at flybridge Teak folding cockpit table on removable telescopic leg ART T137MG15 with 2 thumb-wheel fixings Bimini Top in White canvas with Stainless steel frame work Canvas Package in Sunbrella Material Bose Lifestyle 48 DVD/CD Surround System in lieu of Standard Surround System Sony 32" LCD TV - on fall and rise system in lieu of the standard I-Pod docking station (Sonance I-dock IW-1) at saloon Washer/Dryer fitted in enclosed cabinet I-Pod docking station (Sonance I-dock IW-1) at forward cabin Sharp Aquos 20" LCD TV in lieu of standard for aft master stateroom I-Pod docking station (Sonance I-dock IW-1) for aft master stateroom Safe - 2 brick - with Digital lock for aft master stateroom I-Pod docking station (Sonance I-dock IW-1) for starboard mid cabin Air Conditioning installation, 1 x 7000 btu for crew cabin Furuno Navnet 1944C 10.4" Colour LCD Radar/plotter (4ft open scanner) with GPS antenna GP320B on lower console and Navnet GD-1920C 10.4" Colour LCD plotter (radar repeater) on fly console - in lieu of std. inc Simrad pilot fast heading capability junction box AC20 Icom M602 waterproof combined Fixed DSC VHF Dual station Aqualuma white LED wide angle underwater lighting x 4 Glendinning Cablemaster - 1 x power feed and recovery of AC shorepower cable Water Maker HRO Seafari SFM 450-1 (1590 lt/day) including commercial pre

filter, freshwater flush and oil/water separator. Hydraulic Paserelle

## Deck Equipment

**Bathing Platform** Fresh-water marina connection Dockside AC shore power connection Hot and cold swimming shower Teak-laid bathing platform Foldaway stainless steel swimming ladder Hydraulic lifting platform

## Features

**Additional Items** Navy Blue Hull Electric BBQ Grill - Gaganeau lava coal at flybridge Electric cooling unit for cool box at flybridge Teak folding cockpit table on removable telescopic leg ART T137MG15 with 2 thumb-wheel fixings Bimini Top in White canvas with Stainless steel frame work Canvas Package in Sunbrella Material Bose Lifestyle 48 DVD/CD Surround System in lieu of Standard Surround System Sony 32" LCD TV - on fall and rise system in lieu of the standard I-Pod docking station (Sonance I-dock IW-1) at saloon Washer/Dryer fitted in enclosed cabinet I-Pod docking station (Sonance I-dock IW-1) at forward cabin Sharp Aquos 20" LCD TV in lieu of standard for aft master stateroom I-Pod docking station (Sonance I-dock IW-1) for aft master stateroom Safe - 2 brick - with Digital lock for aft master stateroom I-Pod docking station (Sonance I-dock IW-1) for starboard mid cabin Air Conditioning installation, 1 x 7000 btu for crew cabin Furuno Navnet 1944C 10.4" Colour LCD Radar/plotter (4ft open scanner) with GPS antenna GP320B on lower console and Navnet GD-1920C 10.4" Colour LCD plotter (radar repeater) on fly console - in lieu of std. inc Simrad pilot fast heading capability junction box AC20 Icom M602 waterproof combined Fixed DSC VHF Dual station Aqualuma white LED wide angle underwater lighting x 4 Glendinning Cablemaster - 1 x power feed and recovery of AC shorepower cable Water Maker HRO Seafari SFM 450-1 (1590 lt/day) including commercial pre filter, freshwater flush and oil/water separator. Hydraulic Paserelle

**Construction** Hand-laid GRP Get coat including Stripes Isophthalic polyester skin coat with powderbound mat Stitched multi-axial reinforced single skin bottom Balsa cored hull topsides and deck Hull stiffened with longitudinal stringers supported by transverse bulkheads and floors Antifouling

## Hull

**Main Helm Console** Upholstered double helm seat Console with burr walnut type fascia

Hydraulic steering Wood rimmed steering wheel Radar/plotter Autopilot VHF radio dual station Full analogue engine instrumentation Electric speedlog Depth sounder Rudder indicator Bow thruster control Horn Windscreen wipers and washers Trim tab controls Cigar lighter Opening helm side door Glass holders Hand-helm fire extinguisher

## Исключения

---

При продаже яхты исключаются личные вещи владельца.

## Отказ от ответственности

---

Компания предоставляет описание судна или яхты добросовестно, но не может гарантировать точность этой информации, а также не ручается за техническое состояние. Покупатель должен проинструктировать своих агентов или оценщиков исследовать представленную информацию более подробно, по собственному желанию. Продажа судна или яхты, изменение цены или снятие с продажи будет происходить без предварительного уведомления.



# ФОТОГРАФИИ



Sunseeker Charters

## ITACA

### SUNSEEKER MANHATTAN 60

Regaling in looks and layout, the Manhattan 60 bears all the desirable hallmarks of this ever-popular range. Designed for leisure, you can relax and socialise on the spacious flybridge or enjoy the stylish interiors and roomy living areas below. The Manhattan 60 is an ideal choice for accommodating family or entertaining friends, guaranteeing a warm reception for everyone who boards her.

Operating Cancún, Mexico

---

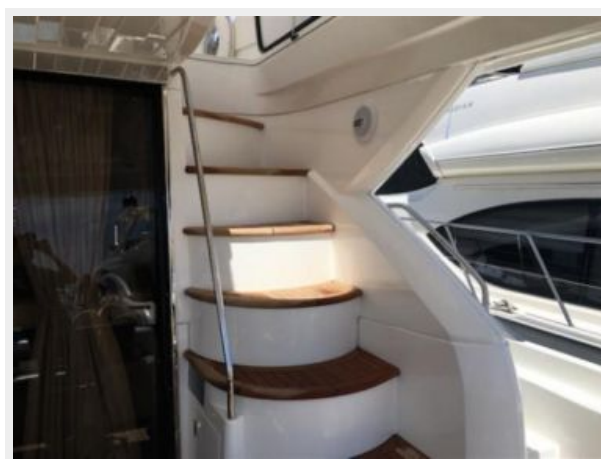
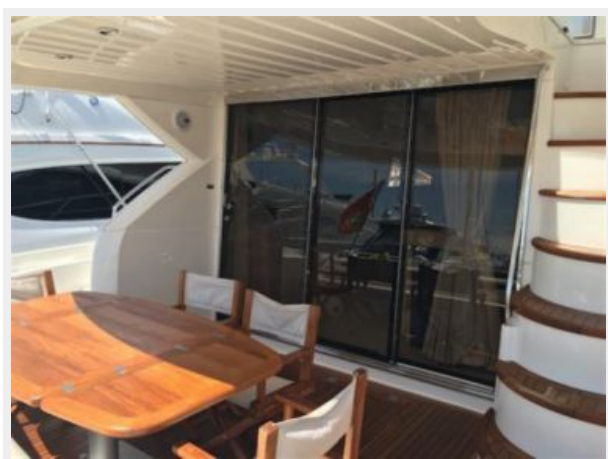
US SPECIFICATION

Sunseeker Charters

<p><b>Built to American specification</b>                  MCA coded Cat 2                  Build date: 2008                  Flag: Mexican                  Colour: White and Blue                  Cruising speed: 23 knots                  Fuel consumption @cruising speed: 220 gph                  Range@cruising speed: 250 miles                  Max Speed: 30 knots</p>	<p><b>Specification</b>                  Length overall: 19.60 m 64' 4"                  Beam (max): 5.0 m 16' 5"                  Height above waterline: 5.95 m 19' 5"                  Draft (inc props): 1.49 m 4' 11"                  Displacement @ full load: 31,000 kg 68,200 lbs                  Fuel capacity: 3,000 ltr 660 UK gal/792 US gal                  Fresh water capacity: 700 ltr 154 UK gal/185 US gal                  Engines: Caterpillar</p>	<p><b>Equipment</b>                  Flat-screen TV in saloon                  Bose surround system                  DVD/CD/MP3 player                  LCD TVs in all cabins                  Air conditioning                  Tender</p>
--	---	---

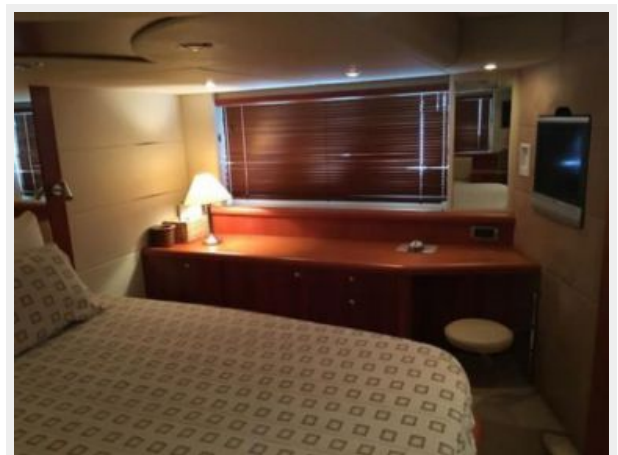
**Accommodation**  
 6 Guests in 3 cabins  
 1 Master stb cabin  
 1 Forward VIP guest cabin  
 1 Starboard twin guest cabin  
 2 Crew



















# КОНТАКТЫ

---

Андрей Шестаков (Andrey Shestakov) – ведущий яхтенный брокер отдела продаж яхт и судов компании Shestakov Yacht Sales Inc. Официальный представитель Shestakov Yacht Sales Inc. для русскоговорящих клиентов в центральном офисе компании в Майами/Форт Лодердейл/Флорида/США.

## Контактная информация

---

Email: [andrey@shestakovyachtsales.com](mailto:andrey@shestakovyachtsales.com)

Web: [shestakovyachtsales.com](http://shestakovyachtsales.com)

## Телефоны

---

Краснодарский край: **+7(918)465-66-44**

США, Майами, Флорида: **+1(954)274-4435**

## Время работы

---

Понедельник – Суббота: **9:00 - 21:00**  
EDT

Воскресенье: **Закрито**

## Адрес

---



Harbour Towne Marina, 850 NE 3rd St,  
STE 213, Dania, FL 33004