

NO NAME — JEANNEAU



Builder: JEANNEAU

Year Built: 2006

Model: Performance Sailboat

Price: PRICE ON APPLICATION

Location: United States

LOA: 42' 6" (12.93m)

Beam: 13' 7" (4.12m)

Max Draft: 5' 4" (1.60m)

Our experienced yacht broker, Andrey Shestakov, will help you choose and buy a yacht that best suits your needs **No Name — JEANNEAU** from our catalogue. Presently, at Shestakov Yacht Sales Inc., we have a wide variety of yachts available on our sale's list. We also work in close contact with all the big yacht manufacturers from all over the world.

If you would like to buy a yacht **No Name — JEANNEAU** or would like help answering any questions concerning purchasing, selling or chartering a yacht, please call **+1(954)274-4435**

TABLE OF CONTENTS

TABLE OF CONTENTS	2
SPECIFICATIONS	3
Overview	3
Basic Information	3
Dimensions	3
Speed, Capacities and Weight	3
Accommodations	4
Hull and Deck Information	4
Engine Information	4
DETAILED INFORMATION	5
Electrical & Electronics	5
Navigational System	5
Galley	5
Forward Stateroom	5
Forward Head	5
Aft Head	6
Master Stateroom	6
Sails, Deck, Mechanical	6
Main Salon	6
Exclusions	7
Disclaimer	7
PHOTOS	8
CONTACTS	10
Contact details	10
Telephones	10
Office hours	10
Address	10

SPECIFICATIONS

Overview

The Jeanneau 42DS continues to be one of the most popular models sold in the past several years due to her sailing performance, exceptional comforts with a huge aft master stateroom, large main salon with great visibility, lighting and brightness.

This particular 42DS is a one owner boat, never chartered, carefully maintained, upgraded and shows well.

PURCHASE BEFORE MARCH 1, 2011 AND WE WILL PAY FOR YOUR SURVEY AT THE CLOSING AND WINTER STORAGE. SHE IS STILL IN THE WATER.

Yacht Sales Professionals committed to "Excellence with Integrity".

Basic Information

Category: Performance Sailboat

Model Year: 2006

Year Built: 2006

Country: United States

Dimensions

LOA: 42' 6" (12.93m)

LWL: 38' 0" (11.58m)

Beam: 13' 7" (4.12m)

Max Draft: 5' 4" (1.60m)

Speed, Capacities and Weight

Displacement: 20500 Pounds

Water Capacity: 93 Gallons

Holding Tank: 30 Gallons

Fuel Capacity: 34 Gallons

Accommodations

Total Cabins: 2

Total Heads: 2

Hull and Deck Information

Hull Material: Fiberglass

Engine Information

Engines: 1

Manufacturer: Yanmar

Engine Type: Inboard

Fuel Type: Diesel

DETAILED INFORMATION

Electrical & Electronics

RAYMAINE INSTRUMENTS C80 CHARTPLOTTER AUTOPILOT WIND, SPEED, DEPTH AT BOTH HELMS RADAR VHF RADIO AC/DC DISTRIBUTION PANEL DISPLAY FOR TANKAGE AND BATTERIES JENSEN 20' LCD FLAT SCREEN TV WITH ANTENNA SONY RADIO, SPEAKERS AND IPOD CONNECTION BATTERY CHARGER AIR CONDITIONING/ REVERSE CYCLE HEAT ELECTRIC WINDASS

Navigational System

The nav is located on port aft of the settee and is forward facing. The table top is large enough to lay out a chart book and has storage under the lid. In addition, there are cubbies located forward and under the foot space and along the hull. More storage is beneath the nav seat.

Galley

Aft on starboard, the L-shaped galley is separated from the dinette by a glass splash guard, which keeps the food where it belongs and yet lets the chef remain part of the conversation. The sink is oriented on centerline and has a counter top insert for when it is not in use. Below the sink is drawer and locker space, with a pull out trash bin located behind the door. Around and along the hullside, there is a large refrigerated ice box and 2 burner stove & oven, as well as a microwave. A generous amount of shelf and locker space is also located behind them.

Forward Stateroom

The forward stateroom is quite spacious, with a large 6'6" long berth. At the foot of the berth is a cubby space, while along both hulls is a wrap around fiddled shelf; additional storage space is below the berth. A changing seat is on the port side, followed aft by a double doored locker that has hanging space on one side and shelves on the other. A bureau top is over the locker and a cubby beneath. Ventilation and lighting is provided by three overhead lights, a large Lewmar hatch with solar vent and a Caframo fan. There is an ensuite head located on starboard.

Forward Head

The heads are easy to keep clean with smooth molded fiberglass surfaces for simple wipe down. The sink is molded integrally with the counter top and there is a pull out faucet/shower wand. An electric head are user friendly and a pleasant appointment to be certain. A mirrored medicine

cabinet is behind the sink and additional storage is below. There are two lights and an overhead hatch for ventilation.

Aft Head

Aft of the nav station on port is the aft head, which also can serve as a second entrance into the master stateroom behind it. This compartment is very similar to the forward head, with easy to wipe down molded surfaces, an electric head and large mirrored medicine cabinet. An opening port and overhead hatch provide plenty of ventilation. The shower controls in this head are separate, with a removable wand mounted on the centerline bulkhead, and there is a wrap around shower curtain as well.

Master Stateroom

The size of this stateroom is surprising, as most aft cockpit boats have very limited headroom in here. Headroom in this case is a comfortable 6'3", the berth is 6'4" x 6'5", with a padded headboard and reading lights on either side of it. On either side are large "end tables" with storage beneath them and shelves above and outboard along the hull sides. Curved dressing seats, with storage beneath them, are located on either side of the bed. On starboard there is a double door locker, with hanging as well as shelf storage and a cubby beneath. On the port side is the entrance to the aft head. The cabin is ventilated by an overhead hatch and three opening ports.

Sails, Deck, Mechanical

In-mast furling mainsail Furling Genoa QUANTUM Cruising spinnaker with sock Spinnaker sheets, halyard and blocks FLEXO-FOLD folding prop Life sling 44# Delta anchor, with 75' chain and 150' rode Fenders, fender straps and all dock lines. Custom dodger, bimini and connector Winter canvas cover boom-tent Interior fans Edson Outboard rail mount

Main Salon

The salon is spacious and well lit, with large windows surrounding the entire space. Curtains, tastefully installed within teak recesses on either side, can be slid out of sight when you want the window views and closed for privacy at night. Seating fabrics are a cream colored leather throughout. Headroom is between 6'5" and 6'6", which lends to the feeling of openness you feel when you step aboard. On port you will find a curved settee, with storage beneath and behind it. Above and behind it is an open shelf with a fixed port light above and two drop front locker doors.

On starboard the C-shaped dinette seating also has the same storage features as found on port, with one of the drop downs lockers having bottle storage inside. A 20" flat screen is located on the forward bulkhead and the large oval dinette table provides plenty of seating for meals.

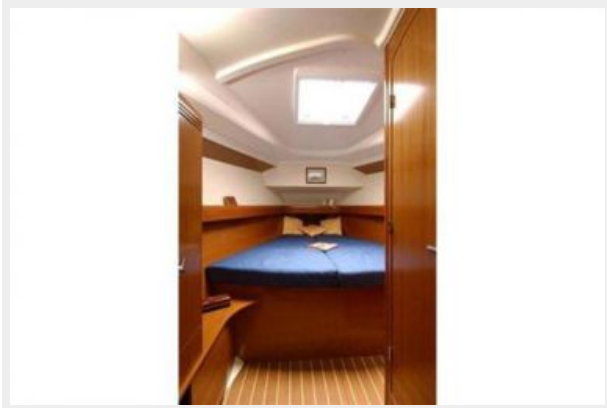
Exclusions

Owner's personal belongings.

Disclaimer

The Company offers the details of this vessel or yacht in good faith but cannot guarantee or warrant the accuracy of this information nor warrant the condition of the vessel. A buyer should instruct his representatives, agents, or his surveyors, to investigate such details as the buyer desires validated. This vessel or yacht is offered subject to prior sale, price change, or withdrawal without notice.

PHOTOS





CONTACTS

Andrey Shestakov, leading yacht broker of the sales department of Shestakov Yacht Sales Inc. Shestakov Yacht Sales Inc., the official representative of the Miami/Fort Lauderdale FL headquarters.

Contact details

Email: andrey@shestakovyachtsales.com

Web: shestakovyachtsales.com/en/

Telephones

USA: +1(954)274-4435

Office hours

Monday – Saturday: **9:00 - 21:00** EDT

Sunday: **closed**

Address



Harbour Towne Marina, 850 NE 3rd St,
STE 213, Dania, FL 33004