

NO NAME — CONCORDIA YACHTS



Builder: CONCORDIA YACHTS

Year Built: 2004

Model: Cruising Sailboat

Price: PRICE ON APPLICATION

Location: United States

LOA: 36' 0" (10.97m)

Beam: 9' 0" (2.74m)

Max Draft: 4' 7" (1.37m)

Cruise Speed: 6 Kts. (7 MPH)

Max Speed: 7 Kts. (8 MPH)

Our experienced yacht broker, Andrey Shestakov, will help you choose and buy a yacht that best suits your needs **No Name — CONCORDIA YACHTS** from our catalogue. Presently, at Shestakov Yacht Sales Inc., we have a wide variety of yachts available on our sale's list. We also work in close contact with all the big yacht manufacturers from all over the world.

If you would like to buy a yacht **No Name — CONCORDIA YACHTS** or would like help answering any questions concerning purchasing, selling or chartering a yacht, please call **+1(954)274-4435**

TABLE OF CONTENTS

| | |
|--|----|
| TABLE OF CONTENTS | 2 |
| SPECIFICATIONS | 3 |
| Overview | 3 |
| Basic Information | 3 |
| Dimensions | 3 |
| Speed, Capacities and Weight | 4 |
| Accommodations | 4 |
| Hull and Deck Information | 4 |
| Engine Information | 4 |
| DETAILED INFORMATION | 5 |
| Accommodations | 5 |
| Deck and Mechanical | 5 |
| Deck Equipment | 5 |
| Electronics and Navigational Equipment | 6 |
| Galley | 6 |
| Exclusions | 6 |
| Disclaimer | 6 |
| PHOTOS | 7 |
| CONTACTS | 10 |
| Contact details | 10 |
| Telephones | 10 |
| Office hours | 10 |
| Address | 10 |

SPECIFICATIONS

Overview

PRICE JUST REDUCED. PURCHASE PRIOR TO MARCH 1, 2011 AND WE WILL PAY FOR YOUR SURVEY AT TIME OF CLOSING

This D36 is a very fun and easy sailing weekender or day-sailor. Initially produced to compete with the Morris 36 at

half the price, this barely used, upgraded model is one third the typical price of a Morris 36.

I have sailed this boat numerous times in winds up to 25kts and it handles very well, with excellent acceleration due

to her narrow water line, and great for single-handing.

There are never a shortage of admirers both on the water and on the docks because of her classic traditional lines.

Basic Information

Category: Cruising Sailboat

Model Year: 2004

Year Built: 2004

Country: United States

Dimensions

LOA: 36' 0" (10.97m)

LWL: 26' 5" (8.03m)

Beam: 9' 0" (2.74m)

Max Draft: 4' 7" (1.37m)

Speed, Capacities and Weight

Cruise Speed: 6 Kts. (7 MPH)

Max Speed: 7 Kts. (8 MPH)

Displacement: 11800 Pounds

Water Capacity: 21 Gallons

Fuel Capacity: 21 Gallons

Accommodations

Total Cabins: 1

Total Heads: 1

Hull and Deck Information

Hull Material: Fiberglass

Engine Information

Engines: 1

Manufacturer: Yanmar

Model: Saildrive

Engine Type: Inboard

Fuel Type: Diesel

DETAILED INFORMATION

Accommodations

V berth forward, with twin settee berths in the main salon. Hanging lockers, Satin varnished cherry interior, Head, Galley, navigation station.

Deck and Mechanical

Aluminium mast, spar & Boom; internal halyards;

Stainless steel rigging;

SS chain plates & tangs;

Genoa Furling gear;

all halyard lead to cockpit;

(2) harken 32 manual winches;

(2) Harken 16 Halyard winches;

main'sl reefing through winch & clutch on cabin top;

Genoa halyard winch through clutch on cabin top; color coded Reefing lines sail covers;

Sail area; Main : 290 ft. Furling Genoa 110% 302 ft.

Yanmar sail-drive w/Gori 2 blade folding prop;

sea water strainer; Racor Fuel filter;

Three 12v batteries;

Deck Equipment

Self draining cockpit with molded seats and teak decking. SUNBRELLA cushions, good storage under seats, stereo speakers in cockpit, Dodger,

Electronics and Navigational Equipment

RAYMARINE speed, depth, wind indicators, Bulkhead mounted PLATSIMO compass

Galley

CORIAN counter tops, stainless steel sink with foot pump, lockers for dish storage

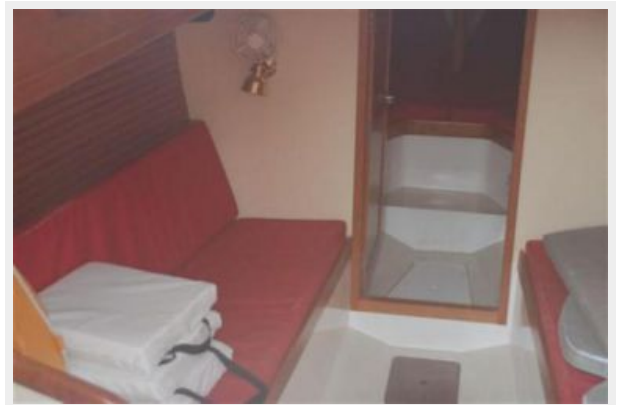
Exclusions

Owner's personal belongings.

Disclaimer

The Company offers the details of this vessel or yacht in good faith but cannot guarantee or warrant the accuracy of this information nor warrant the condition of the vessel. A buyer should instruct his representatives, agents, or his surveyors, to investigate such details as the buyer desires validated. This vessel or yacht is offered subject to prior sale, price change, or withdrawal without notice.

PHOTOS







CONTACTS

Andrey Shestakov, leading yacht broker of the sales department of Shestakov Yacht Sales Inc. Shestakov Yacht Sales Inc., the official representative of the Miami/Fort Lauderdale FL headquarters.

Contact details

Email: andrey@shestakovyachtsales.com

Web: shestakovyachtsales.com/en/

Telephones

USA: +1(954)274-4435

Office hours

Monday – Saturday: **9:00 - 21:00** EDT

Sunday: **closed**

Address



Harbour Towne Marina, 850 NE 3rd St,
STE 213, Dania, FL 33004