

MY TURN — JEFFERSON



Судостроитель: JEFFERSON

Год постройки: 1987

Модель: Моторная яхта

Цена: **ЦЕНА ЯХТЫ ПО ЗАПРОСУ**

Местонахождение: United States

Длина общая: 60' 0" (18.29m)

Ширина: 17' 6" (5.33m)

Мин. осадка: 4' 7" (1.40m)

Купить **My Turn — JEFFERSON** а также выбрать подходящую вам яхту из нашего каталога яхт вам поможет опытный яхтенный брокер Андрей Шестаков. На сегодняшний день компания **Shestakov Yacht Sales Inc.** имеет большое количество яхт в собственном списке продаж, а также тесно сотрудничает со всеми крупными яхтенными производителями по всему миру.

Для того чтобы купить яхту **My Turn — JEFFERSON** а также проконсультироваться по любому вопросу связанному с покупкой, продажей, чартером яхт позвоните по телефону **+7(918)465-66-44**.

ОГЛАВЛЕНИЕ

ОГЛАВЛЕНИЕ	2
ХАРАКТЕРИСТИКИ	4
Основная информация	4
Размеры	4
Скорость, вместимость и масса	4
Корпус и палуба	4
Информация о двигателе	4
ПОДРОБНОЕ ОПИСАНИЕ	5
Introduction	5
Detailed Vessel Walkthrough	5
Main Salon	5
Galley	6
Master Stateroom	6
Guest Stateroom 1	7
Guest Stateroom 2	7
Guest Head 1 & 2	7
Bow Stateroom/Crew Quarters	8
Bow Head	8
Companionway Aft	8
Deck	8
Electronics & Helm	9
Engine Details, Electrical & Mechanical Equipment	10
Additional Upgrades & Optional Upgraded Equipment	10
Broker's Remarks	12
Исключения	12
Отказ от ответственности	12
ФОТОГРАФИИ	13
КОНТАКТЫ	20

Контактная информация	20
Телефоны	20
Время работы	20
Адрес	20

ХАРАКТЕРИСТИКИ

Основная информация

Тип судна: Моторная яхта

Подкатегория: Моторный парусник

Модельный год: 1987

Год постройки: 1987

Страна: United States

Кубрик: Да

Размеры

Длина общая: 60' 0" (18.29m)

Ширина: 17' 6" (5.33m)

Мин. осадка: 4' 7" (1.40m)

Скорость, вместимость и масса

Водоизмещение: 88000 Pounds

Вместимость воды: 400 Gallons

Объем топливного бака: 1000 Gallons

Корпус и палуба

Материал корпуса: Fiberglass

Информация о двигателе

Двигатели: 2

Производитель: Detroit Diesel

Модель: 6V92

Тип двигателя: Inboard

Тип топлива: Diesel

ПОДРОБНОЕ ОПИСАНИЕ

Introduction

Fresh water kept stored under cover and maintained by owner w/deep pockets to high standards, MY TURN will not disappoint the discerning buyer. Many factory upgrades set her apart from other vessels in this class. Don't get a 60 Jefferson without looking at MY TURN! She is a beauty that has received lots of loving care...and it shows.

Detailed Vessel Walkthrough

Main Deck: aft is the covered aft deck with wing doors with seating and teak entertainment center. Moving fwd is the main salon with I shaped sofa to port and occasional chairs to starboard. Fwd to starboard is the Entertainment bar. To port side is the day head. Etched glass divider to starboard and forward is the lower helm with seating to starboard and stairway to lower deck. To port are the stairs to the upper deck. There are sliding doors to the exterior and bow area. Seating is provided on the fwd edge of the trunk cabin. There are full walk around passages going to the aft deck. Going below from the main deck is the dinette area to starboard. To port is the galley with all the equipment necessary for extended cruising. Forward is crew quarters/fwd stateroom with bunks. Head is to port.

Heading aft through passage way on starboard side are two complete guest heads. On the port side fwd is guest stateroom with 2 berths. Aft is the Guest master w/queen size berth. Moving aft are the engine rooms with access door, also washer and dryer compartment. Two (2) access doors for each room. Aft of that is the master stateroom w/king size berth and ensuite head including shower and tub. Heading up the portside stairs from the lower helm to the upper deck. Helm is located forward in center w/helm chair. L-shaped seating on starboard side with cocktail table and smaller L-shaped seating to port. There is a blue Bimini top w radar arch at rear edge of top. To the rear is the Boston Whaler launch w/outboard. Davit is located on the port side.

Main Salon

- Teak Parquet Sole under Carpet
- Teak Valence Boards w/Drapes
- Vinyl Headliner
- Glass Panels on Aft Bulkhead
- Sliding Glass Door
- Sliding Side Windows w/Screens
- P&S Sliding Doors from Helm to Side Decks

- Teak Chart Deck
- Windshield Wipers & Washers
- Hydraulic Steering
- Dual Lever Throttle & Clutch Controls

Galley

- Teak Parquet Sole
- Teak Valences w/Drapes
- Vinyl Headliner
- Teak Cabinets
- Laminate Counter Tops
- 4 Burner Range w/Oven & Hood w/Exhaust
- 12v & 120v Lights
- 120v Outlet
- Dinette w/underneath Storage
- Microwave
- Dishwasher
- Trash Compactor
- Generator access Hatch in Galley Sole
- Port Light over Dinette
- Lazy Susan Cabinet
- Stairway up to Salon

Master Stateroom

- Teak Parquet Sole
- Vinyl Headliner
- Night Stands
- Mirror
- Teak Valence Boards And Drapes
- P&S Built In Bureaus
- Queen Size Berth
- Built-in Dresser Port and Starboard

Guest Stateroom 1

- Teak Parquet Sole
- > Vinyl Headliner
- Twin Berths
- Port lights
- Hanging Locker
- Night Stand
- Mirror
- Teak Valence And Drapery

Guest Stateroom 2

- teak parquet sole
- vinyl headliner
- port light
- teak valence board w/drapery
- overhead storage cabinet

Guest Head 1 & 2

- teak parquet sole
- port light
- shower w/seat
- sump pump
- el head
- storage cabinet

Bow Stateroom/Crew Quarters

- Teak Parquet Sole
- Port light
- Upper And Lower Berths
- Hanging Locker

Bow Head

- Teak Parquet Sole
- Storage Cabinet
- Stall Shower
- El Head
- Towel Bar
- Sink
- Port light

Companionway Aft

- Teak Parquet Sole
- Vinyl Wall Covering
- 4 Engine Room Access Doors
- Linen Storage Locker
- Washer/Dryer Compartment

Deck

- 13' Boston Whaler 1988 Launch W/40 HP Johnson Outboard
- Marquipt Low Profile Electric Davit
- Blue Launch Cover
- Stainless Steel Railings W/Mahogany Cap Rail And Spray Boards

- All Stainless Steel Hardware
 - Stainless Steel Anchor
 - Spring Line Cleats And Chocks
 - Stainless Steel Deck Rails
 - Port, Starbd And Aft Boarding Gates
 - 4 Trumpet Air Horns
 - Stainless Steel Rudders
 - Struts And Prop Shafts
 - Fresh Water Wash Fwd And Aft
 - Sea Water Wash Fwd
-
- Bow Pulpit W/Railing
 - Swim Platform And Marquipt Aluminum Ladder
 - H+C Transom Shower
 - Compass @ Upper And Lower Helms
 - Frp Spray Dodger Panels
 - Radar Arch
 - Under Console Storage-Bridge
 - Bimini Top
 - Complete Upper Helm W/Controls
 - Ss Rails
 - Tinted Windscreen
 - Helm seat
 - Stainless Steel Sink W/Bar Cabinet

Electronics & Helm

- Raytheon R33 VHF radios
- (2) Si Tex depth sounders
- (2) Raytheon D 600 depth/temp/trip/logs
- Raytheon radar
- Raynav 570 Loran C
- JVC stereo; Realistic AM/FM cassette deck w/speakers
- AX 66 amplifier
- FX 33 tuner
- HR-D470 VCR/DVD
- X2 -v220 CD player
- TD-W50 dual cassette deck
- Built in LCD TV w/DVD & VCR

Engine Details, Electrical & Mechanical Equipment

- 12v Bilge Blowers
- Racor Filters
- Sea Strainers
- Fire Control System
- Fuel Manifold
- Fresh Water Fill Spigot
- 3 Bilge Pumps
- 2 Manual Bilge Pumps
- Pressure Water System W/Hot Water Tank
- Fiberglass Fuel Tanks
- Oil Change System Fuel Priming Pumps
- Seacocks on all thru hulls
- Air Horn Compressor
- 3 Smoke Detector
- 2 Fume Detectors At Lower Helm And Engine Rooms W Upper And Lower Helm Indicators
- (2) 20 Kw Gensets
- Transformer Connected Shoreline Inlets
- 12 V Lights
- 120 V Outlets
- Battery Control Panels W/ Fusing And Isolation Switches
- 6 8d Batts; 2 Gr 32 Batts; Nav Lights
- macerator pump

Additional Upgrades & Optional Upgraded Equipment

- 1 Additional 20 Kw Genset W/Soundshield; Add 50a Shore Power Inlet; Custom A-C/D-C EI Panels
- (2)15 Kva Isolation Transformers
- 7 Zone Aqua Air Units
- (5) Galley Maid EI Heads
- Trim Tabs
- 1 110v EI Nutone Exhaust Vent Per Head

- (2) 2500gph Rule Bilge Pumps (4) Total
- 2 Manual Bilge Pumps (3) Total
- 2 Holding Tank Indicators
- P & S Fresh Water Connections
- 2 Galleymaid Hi Pressure Fw Pumps
- 110v 40 Psi Fw Pressure Pump
- 2 High Water Bilge Alarms
- Salt Water Wash Pumps (3) Total
- 3 Fw Washdowns; Fw Faucet In Ea Engine Room And Genset Compartment
- Lead Sound Deadening Soundshield In Engine And Gen Compartments
- Camphorwood Linings In All Stateroom Lockers
- 20 Gal Water Heaters
- 3 Total 60 Amp Automatic Chargers
- 4 Guest 2303 Battery Cutoff Switches
- (2) Guest 2300a Batt Cutoff Switches
- 1 Guest Battery Voltage Scanner
- 4 Halogen Spreader Lights On Radar Arch
- 2 Vdo Rudder Order Indicators
- (2) 12v Constant Duty Blowers Per Engine Room
- (2) 110v Blowers Per Engine Room
- 2 Cole Hersee Solenoid Hd Parallel Switches
- 2 Morse Bow Docking Lights
- 2 Morse Stern Docking Lights
- Nillson V 3000 Windlass W/Gypsy And 3/8 Chain Lead And 600' 5/8" Rode, 60lb S.S. Plow Anchor
- Battery Tender Genset
- 3 Fireboy 100 Ma Halon Remote Fire Control Systems W/Shutdowns Switches For Engines And Generators
- Rayline Searchlight W/Dual Station Controls
- 110v Strip lighting In Cornices
- (22) 110v Fluorescent Lights In Lieu Of 12v Dome Lights
- 2) 110 V Flour Lights Galley
- 110v Make Up Lights In All Heads
- 110v Fixture Day Head
- Synthetic Marble Tub Master Head
- Synthetic Marble Basins And Countertops In All Heads
- Lazy Susan Locker In Galley
- Vinyl Covering In Companionway And Fore cabin
- 2 Bomar Hatches In Transom/Master Stateroom
- Upgrades Aluminum Ports W/Quicklocks
- Custom 4 Trumpet Air horn
- Wired For 8 Station Intercom
- Teak Aft Deck Sole
- Aft Deck Wet Bar(10) 6" Jensen Speakers240v Modern Maid Galley Stove

- Oven And Dishwasher Assembly
- Ge Compactor;
- Frigidaire Lc240j Washer/Dryer
- Epoxy Primer On Bottom
- 110v Galley Dedicated Wiring For Under Counter Blender
- Hidden Locker Hinges
- Almond Color Formica
- Generator Control Panels To Be Located Next To Dc Panels
- Headliner Fastened With Velcro For Easy Service Access
- Aft Deck Wing Doors;
- Saloon Cabinets W/Wine Racks And Sliding Counter Top;
- Hard Rubber Rub Rail System
- Numerous Fire Extinguishers Throughout Vessel
- Extra Tall Nav And Anchor Light
- Spare Fortress Anchor W Rode;
- Custom Wet Bar On Aft Deck Refrigerator & Freezer & Trash Compactor

Broker's Remarks

MY TURN represents the ultimate in a cruising, live aboard motor yacht. Creature comfort and accommodations abound. If you are looking for a yacht to spend a weekend or a year aboard this vessel will suit your needs and provide the amenities to make you proud to entertain friends and family alike. MY TURN has been kept in fresh water most of her life.

Call today and learn why MY TURN will be your choice as your next Motoryacht!

Исключения

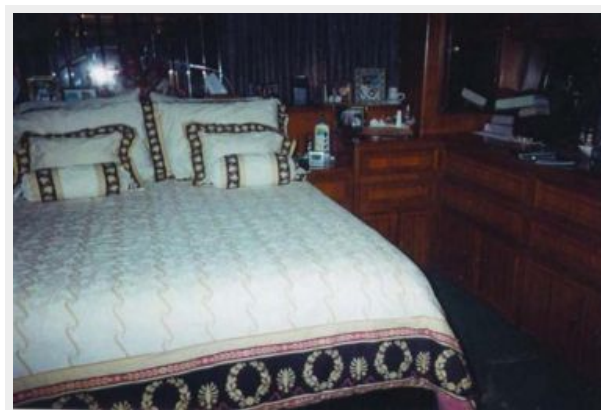
При продаже яхты исключаются личные вещи владельца.

Отказ от ответственности

Компания предоставляет описание судна или яхты добросовестно, но не может гарантировать точность этой информации, а также не ручается за техническое состояние. Покупатель должен проинструктировать своих агентов или оценщиков исследовать представленную информацию более подробно, по собственному желанию. Продажа судна или яхты, изменение цены или снятие с продажи будет происходить без предварительного уведомления.

ФОТОГРАФИИ















КОНТАКТЫ

Андрей Шестаков (Andrey Shestakov) – ведущий яхтенный брокер отдела продаж яхт и судов компании Shestakov Yacht Sales Inc. Официальный представитель Shestakov Yacht Sales Inc. для русскоговорящих клиентов в центральном офисе компании в Майами/Форт Лодердейл/Флорида/США.

Контактная информация

Email: andrey@shestakovyachtsales.com

Web: shestakovyachtsales.com

Телефоны

Краснодарский край: **+7(918)465-66-44**

США, Майами, Флорида: **+1(954)274-4435**

Время работы

Понедельник – Суббота: **9:00 - 21:00**
EDT

Воскресенье: **Закрито**

Адрес



Harbour Towne Marina, 850 NE 3rd St,
STE 213, Dania, FL 33004