

2004 106' LAZZARA MOTORYACHT RAISED — LAZZARA



Судостроитель: LAZZARA

Год постройки: 2004

Модель: Моторная яхта

Цена: ЦЕНА ЯХТЫ ПО ЗАПРОСУ

Местонахождение: United States

Длина общая: 106' 0" (32.31m)

Ширина: 23' 0" (7.01m)

Мин. осадка: 5' 6" (1.68m)

Крейс. скорость: 22 Kts. (25 MPH)

Макс. скорость: 26 Kts. (30 MPH)

Купить 2004 106' Lazzara Motoryacht Raised Pilothouse — LAZZARA а также выбрать подходящую вам яхту из нашего каталога яхт вам поможет опытный яхтенный брокер Андрей Шестаков. На сегодняшний день компания Shestakov Yacht Sales Inc. имеет большое количество яхт в собственном списке продаж, а также тесно сотрудничает со всеми крупными яхтенными производителями по всему миру.

Для того чтобы купить яхту 2004 106' Lazzara Motoryacht Raised Pilothouse — LAZZARA а также проконсультироваться по любому вопросу связанному с покупкой, продажей, чартером яхт позвоните по телефону **+7(918)465-66-44**.

ОГЛАВЛЕНИЕ

ОГЛАВЛЕНИЕ	2
ХАРАКТЕРИСТИКИ	4
Основная информация	4
Размеры	4
Скорость, вместимость и масса	4
Размещение	4
Корпус и палуба	4
Информация о двигателе	5
ПОДРОБНОЕ ОПИСАНИЕ	6
Accommodations	6
Aft deck	6
Crew Quarters	6
Day Head	6
Deck Equipment	7
Dining	7
Electrical System	7
Electronics and Navigational Equipment	7
Engine /Mechanical Equipment	7
Flybridge	8
Galley	8
Guest Stateroom, Amidship	8
Laundry Room	9
Master Stateroom	9
Pilothouse	9
Salon	9
VIP Guest Stateroom, Forward	10
Private ensuite head	10
Private ensuite head	10

VIP Stateroom, Amidship	10
Исключения	10
Отказ от ответственности	10
ФОТОГРАФИИ	11
КОНТАКТЫ	17
Контактная информация	17
Телефоны	17
Время работы	17
Адрес	17

ХАРАКТЕРИСТИКИ

Основная информация

Тип судна: Моторная яхта

Модельный год: 2004

Год постройки: 2004

Страна: United States

Кубрик: Да

Размеры

Длина общая: 106' 0" (32.31m)

Ширина: 23' 0" (7.01m)

Мин. осадка: 5' 6" (1.68m)

Скорость, вместимость и масса

Крейс. скорость: 22 Kts. (25 MPH)

Макс. скорость: 26 Kts. (30 MPH)

Вместимость сточного бака: 600 Gallons Объем топливного бака: 4300 Gallons

Размещение

Всего кают: 4

Всего коек: 4

Каюты экипажа: 2

Койки экипажа: 4

Спальных мест экипажа: 4

Комм. состав экипажа: 2

Корпус и палуба

Материал корпуса: Fiberglass

Информация о двигателе

Двигатели: 2

Производитель: MTU

Модель: DDC 2000

Тип двигателя: Inboard

Тип топлива: Diesel

ПОДРОБНОЕ ОПИСАНИЕ

Accommodations

The entire vessel is done in high gloss African cherry wood with flamed mahogany inlaid marquetry. "Bella Contessa" accommodates eight in four staterooms, with a full beam master stateroom, VIP stateroom and guest stateroom amidship. Crew quarters are located aft accommodating four in two cabins. The pilothouse features state of the art electronics and communication systems. The expansive flybridge features a jacuzzi, wet bar with Jenn-Aire, ample seating in the sun and shade, and a 19' tender. The aft deck offers a wet bar, refridge and icemaker teak table for dining.

Aft deck

Teak decks Curved sliding glass doors into salon Oval table w/stainless double pedestals Custom upholstered settee w/sunbrella fabric Stainless chairs w/Sunbrella fabric Wet bar w/refrigerator/ice maker & teak top CCTV monitor w/custom enclosure Fiberglass bulwarks w/boarding gates, port & stbd Stainless steel handrails (8) Overhead lights mounted in hardtop w/dimmable switches (2) Overhead stereo speakers Freshwater hot & cold shower (2) Sea Doors in storage pods, port & stbd w/hydraulic pod doors Spiral stairways, port & stbd Access door to crew quarters & engine room w/add'l crew access under spiral staircase (2) Dive lockers w/4 whips from dive compressor for easy filling (5) Full sets of dive equipment w/Fabar steel tanks Private crew entrance door

Crew Quarters

Captain's cabin w/full size berth & storage drawers below Nightstand w/drawer storage Hanging locker Overhead storage lockers Wall mounted reading lights Indirect overhead lighting 15" LCD TV w/Sat receiver receiver, VCR, DVD/CD player Isis control unit w/alarm & TV monitor feed B&G hydra 2000 Anchor alarm Ensuite head & shower stall Crew cabin w/upper & lower beths (upper berth removable for storage), drawers & hanging locker 15" LCD TV, satellite receiver, VCR, DVD/CD player Private access to head, port light, corian vanity top & shower stall Crew quarters w/sink, microwave oven, refrigerator undercounter Bosch stacked washer/dryer Access to engine room w/weather tight door Remote pull station for fire system Storage cabinets

Day Head

Day head is located in companionway, starboard side Crema Marfil onyx marble flooring Aqua Brass San Remo nickel faucets & fixtures Wall mounted vanity Mirrored wall above

Deck Equipment

Vertical hydraulic anchor windlass Maxwell 22 warping winches, port & stbd Twin stainless breastplates for hull anchor pockets (2) Poole 200lb polished stainless steel anchors Automatic anchor chain washdown system Custom designed stainless steel cleats Bulwark boarding gates, port & starboard Forward bow deck seating w/hydraulic lift lid to access storage (2) Cablemasters, aft & fwd

Dining

Oval dining table w/leaf 42'x66'x28 & (6) dining chairs Dining light is lacklit w/cappuccino onyx w/cherry grill Veneered china buffet cabinet w/custom storage for china & silverware Upper china cabinets veneered w/glass doors, mirrored back & custom acrylic stemware holders Wood storage cabinets, port & stbd Custom mirrored recessed ceiling w/lighting over dining table Marble flooring w/wood border & carpet inlay Flooring is done in crema marfil grama blend w/wood border Custom upholstered walls Windows w/ 3/8" chemically strengthened glass Access to lower level aft accommodations Access to hallway leading to day head & galley

Electrical System

Twin Onan 45 KW generators (2) Charles Industries Smart Y dockside voltage/phase combiner (4) Heavy duty batteries Vapor proof battery switches Atlas Classic II shore power system Isis PC computer shipboard & alarm monitoring system

Electronics and Navigational Equipment

Furuno radar control RCU Furuno Radar control w/Arpa Northstar GPS 952X (pilothouse & flybridge) Anschutz Autopilot control NP 60 (pilothouse & flybridge) KVH compass repeater AR 77 (pilothouse & flybridge) B&G speed/depth/display hydra 2000 DSS receivers, US & Latin (2) KVHFB compass repeaters AR 77 (new '06) B&G speed/depth display hydra 2000 Valhalla entertain FP port monitor Vicon CCTV zoom focus Vicon CCTV switcher Vicon aft deck camera (5) VEI high resolution monitors Vahalla Radar monitor Vahalla computer monitor Vahalla sounder monitor Icom VHF 8300 Icom VHF 8400 Ray Marine 430 Hailer Furuno Navtex NX 500 Icom SSB Transceiver M802 ACR Epirb Sat2 406 Cat 1 Panasonic phone system Tellular cell phone (new '06) Sea Tel Sat TV Furuno FCV 1200L sounder KVH Satellite phone system IBM plot computer Isis monitoring system

Engine /Mechanical Equipment

Twin DDC/MTU, 1800 HP w/3 DDEC control stations Sea Recovery 1800 GPD watermaker

American bow thruster, 50 HP American Trac digital stabilizers Air conditioned engine room Acoustical & thermal insulation Chilled water for A/C & heating Bilge pump, 230v, 120 gallons/inture, manifold to each bilge compartment Secondary bilge pumps to evacuate each bilge Dockside water connection w/pressure reducing valves (2) Delta T engine room blowers, variable speeds Main engine sea strainers Microphor compressed air marine heads Fire protection system, auto & manual w/auto shut down system Fire pump w/hose connections Freshwater outlet Freshwater washdown Aircraft type stainless steel fuel lines (4) Fuel priming pumps Oberdofer fuel transfer pump Manifold Racor fuel filters for engines & gens DDEC electronic engine controls Holding tank w/access for pump out, 380 gal (2) Holding tanks, port & stbd, 40 gal ea Jastram Hydraulic steering, power assisted Underwater engine exhausts w/dockside bypass for engines & gens Oil changing system for engines, gens & gears Bronze underwater thru hulls & sea cocks Aquamet shafts DDEC electronic engine function displays Water filtration system Cast stainless steel rudders Pressurized gray water pump out system Engine room sink w/hot & cold water Central vacuum system Workbenches Removable engine room grating

Flybridge

Custom fiberglass hardtop Esienglass enclosure Fully equipped control station w/clutches, throttles & bow thruster Wing stations, port & stbd Power assisted hydraulic steering Stidd captain's chair Stidd helm chair Custom upholsterd settees on raised double platform, port & stbd All new flybridge upholstery ('06) Teak tables w/double stainless pedestal bases, port & stbd Half moon shaped bar w/teak counter tops, sink & dual Miele electric grills on port side Refrigerator & icemaker under bar counter (4) Swivel bar stools Jacuzzi tub w/custom upholstered sunpad area on top of tub Storage cabinet w/corion top to starboard Access sliding hatch to pilothouse Access hatch to aft deck via spiral stairs Marquipt 2000lb davit w/remote.

Galley

Countertops are Juparana classico granite w/bullnose & full height backsplash Stainless steel double sinks Insta-hot water dispenser Cherry plank flooring w/satin finish Dishwasher 5-burner electronic cooktop Built-in oven w/convection features Convection oven/microwave w/exhaust fan Trash compactor Side-by-side refrigerator/freezer w/drawers Add'l Whirlpool refrigerator & deep freezer Smoke detector in companionway leading to galley Breakfast nook seats 6 w/deep storage compartments under settee Breakfast table is Juparana classico granite w/full bullnose Sharp 20" flat screen TV Add'l storage & pantry area

Guest Stateroom, Amidship

Full size bed w/storage below, custom spread & shams 15" flat panel LCD TV Stereo & DVD/CD in bookshelf Veneered bookcase w/mirrored back on outboard Mirrored cedar lined hanging

locker Stainless opening ports Hybrid phone Flush mounted halogen lighting in headliner
Pleated shades & valances

Laundry Room

On deck laundry center to port Bosch washer & dryer Wall mounted ironing board & storage

Master Stateroom

Veneered Makore double door access to full beam master stateroom Centerline king-size bed w/drawer storage below Custom honey spread & shams w//Robert Allen silk diamond design Built-in nightstand, port & stbd Veneered Makore dressers (2) Wall sconces Built-in bookcase behind beveled glass doors Vanity/desk & chair Sony 42' Plasma TV, Pioneer surround sound stereo & DVD, JVC VCR player (6) Panoramic windows w/shoji screen & blackout shades Large walk-in cedar closet Custom Fabrica carpeting w/sounddown insulating Full length mirror on inside of walk-in closet His & Her Master Bath: Tub w/jacuzzi, enclosed frameless glass Showers w/access from his & her head w/onyx cappucino marble walls Crema marfil grama blend marble w/emperador dark border Twin vanities, one for both his & her heads Countertops onyx marble w/waterfall bullnose & backsplash

Pilothouse

Fully equipped control station Power assisted hydraulic steering Raised helm flat, electronics flat & console flat in wood veneer Stidd electric powered captains chairs Stairs to bridge are cherry w/awlgrip finish Cruising settee w/teak table behind helm Bookshelves above settee Glass front cabinets port & stbd Captains desk & chair Cherry wood flooring w/maple inlay

Salon

Custom sofa & loveseat upholstered in Ellisana Sahara & Marcoat Amber fabrics Custom occasional chair upholstered in Clarisa fawn fabric Cocktail table (2) Round end tables w/fine art tables Game table w/4 custom upholstered chairs Serving bar w/veneered wood base w/crema marfil granite top, icemaker, refrigerator, wine cooler & storage for barware Entertainment center w/Sony 50" Plasma TV w/Crestron universal remote, Pioneer C300 surround sound stereo & DVD, Sony CD & JVC VCR player Floor to ceiling china cabinets w/mirrored backs & shelves Custom Fabrica carpeting w/Sounddown insulation Full length, electric curved double sliding glass doors Veneered mullions at side windows Fluted wood columns separating main salon from dining salon Headliner w/wood rosettes

VIP Guest Stateroom, Forward

Queen size bed w/drawers below, custom spread & shams Upper cabinets, port & stbd Mirrored, cedar lined hanging locker Upholstered settee chair Wallmounted reading lights Indirect lighting under bed Overhead access hatch to foredeck w/blackout screen

Private ensuite head

Mirrored medicine chest Crema marfil marble floors Halogen lighting overhead w/LED switches Stall shower Crema marfil grama marble w/waterfall bullnose & backsplash w/undercounter sink

Private ensuite head

Mirrored medicine chest over vanity Crema Marfil marble floors Halogen lighting overhead w/LED switches Stall shower Crema marfil grama blend marble w/waterfall bullnose & backsplash w/undermount sink

VIP Stateroom, Amidship

Full beam stateroom w/Queen bed w/storage below, custom spread & shams Flat screen LCD 42" TV Stereo & DVD/CD player in bookshelf Veneered bookcase w/mirrored back on outboard wall Mirrored cedar lined hanging locker Stainless opening ports Hybrid phone Flush mounted halogen lighting in headliner Pleated shades & valances Private ensuite head w/ 3/4 tub Mirrored medicine chest over vanity Crema Marfil marble floors Halogen lighting overhead w/LED switches

Исключения

При продаже яхты исключаются личные вещи владельца.

Отказ от ответственности

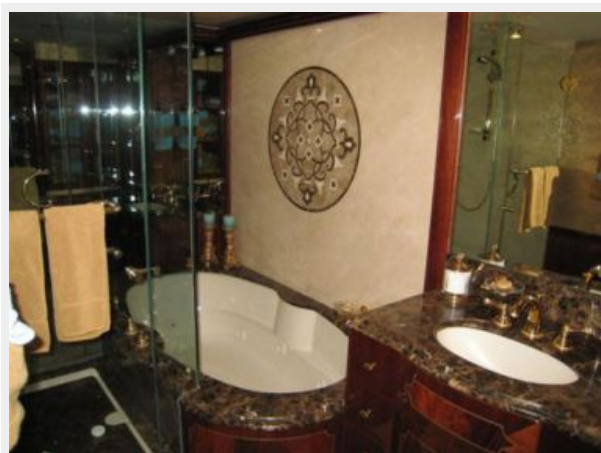
Компания предоставляет описание судна или яхты добросовестно, но не может гарантировать точность этой информации, а также не ручается за техническое состояние. Покупатель должен проинструктировать своих агентов или оценщиков исследовать представленную информацию более подробно, по собственному желанию. Продажа судна или яхты, изменение цены или снятие с продажи будет происходить без предварительного уведомления.

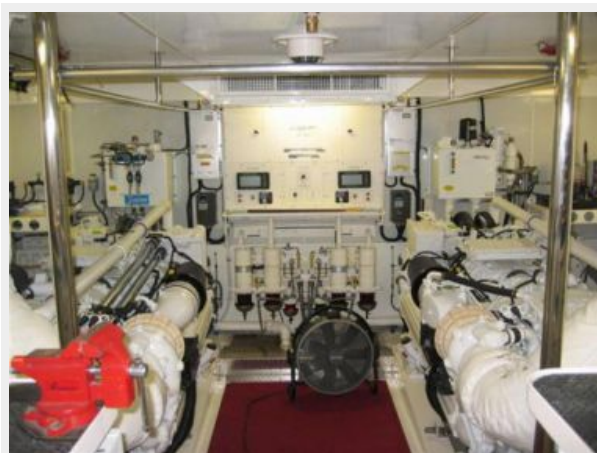
ФОТОГРАФИИ

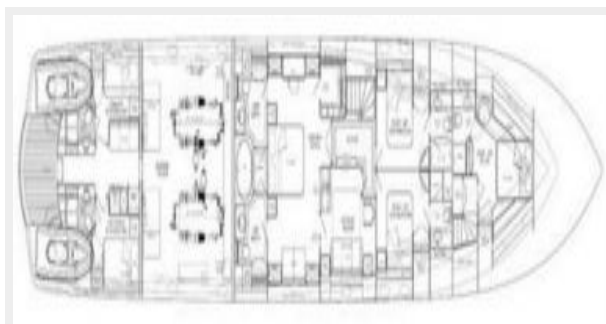
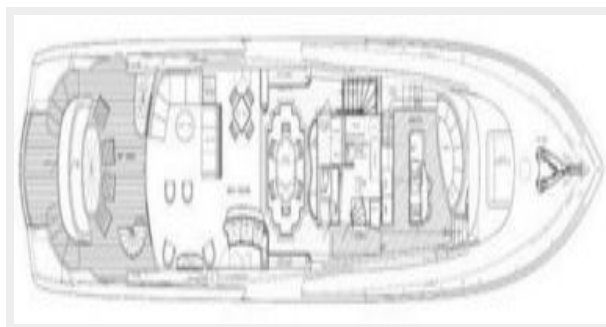
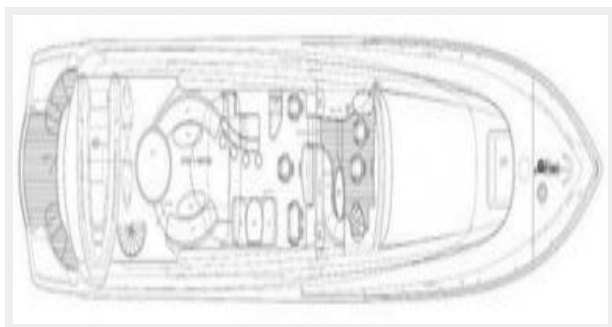












КОНТАКТЫ

Андрей Шестаков (Andrey Shestakov) – ведущий яхтенный брокер отдела продаж яхт и судов компании Shestakov Yacht Sales Inc. Официальный представитель Shestakov Yacht Sales Inc. для русскоговорящих клиентов в центральном офисе компании в Майами/Форт Лодердейл/Флорида/США.

Контактная информация

Email: andrey@shestakovyachtsales.com

Web: shestakovyachtsales.com

Телефоны

Краснодарский край: **+7(918)465-66-44**

США, Майами, Флорида: **+1(954)274-4435**

Время работы

Понедельник – Суббота: **9:00 - 21:00**
EDT

Воскресенье: **Закрито**

Адрес



Harbour Towne Marina, 850 NE 3rd St,
STE 213, Dania, FL 33004