

## PENNY PERFECT — VIKING



**Builder:** VIKING

**LOA:** 74' 0" (22.56m)

**Year Built:** 2006

**Beam:** 19' 9" (6.02m)

**Model:** Sport Fisherman

**Max Draft:** 5' 7" (1.70m)

**Price:** PRICE ON APPLICATION

**Location:** United States

Our experienced yacht broker, Andrey Shestakov, will help you choose and buy a yacht that best suits your needs **Penny Perfect — VIKING** from our catalogue. Presently, at Shestakov Yacht Sales Inc., we have a wide variety of yachts available on our sale's list. We also work in close contact with all the big yacht manufacturers from all over the world.

If you would like to buy a yacht **Penny Perfect — VIKING** or would like help answering any questions concerning purchasing, selling or chartering a yacht, please call **+1(954)274-4435**

# TABLE OF CONTENTS

TABLE OF CONTENTS	2
SPECIFICATIONS	5
Overview	5
Basic Information	5
Dimensions	5
Speed, Capacities and Weight	5
Accommodations	6
Hull and Deck Information	6
Engine Information	6
DETAILED INFORMATION	7
Overview	7
Salon	7
Galley	8
Day Head	8
Master Stateroom	8
Master Head	9
VIP Stateroom	9
VIP Head (En Suite)	9
Port Stateroom	10
Port Guest Head (En Suite)	10
Crew Stateroom (Amidships Port)	10
Crew Head (En Suite)	10
Companionway	11
Electrical System	11
Fly Bridge	11
Fly Bridge Electronics	12
Tower Electronics	12
Cockpit	13

Deck Equipment	13
Other Ship's Systems	14
Engine Room/Mechanical Equipment	14
Exclusions	14
Exclusions	15
Disclaimer	15
PHOTOS	16
Salon Port Side Arrangement	16
Salon Port Side Arrangement	16
Salon Sofa	16
Salon Dinette	16
Galley	16
Galley	16
Day Head	17
Electrical Panel	17
Companionway	17
Washer & Dryer	17
Master Stateroom	18
Master Stateroom	18
Master Stateroom	18
Master Stateroom	18
Master Head	18
VIP Stateroom	18
VIP Head	19
VIP Forward	19
Starboard Stateroom Forward	19
Starboard Stateroom Forward	19
Crew Head	20
Fly Bridge Electronics	20

Fly Bridge Electronics	20
Fly Bridge Sofa	20
Fly Bridge Wet Bar & TV	20
Cockpit Mezzanine	20
Cockpit Overhang Camera & Misters	21
Tuna Tubes	21
Bow Pulpit Arrangement	21
Davit Arrangement & Chocks	21
Stern View	22
Engine Room Electrical Panel	22
Engine Room	22
Engine Room	22
Engine Room Port	22
Engine Room Starboard	22
Engine Room Ventilation Boxes	23
Engine Room Water Maker	23
Engine Room	23
CONTACTS	24
Contact details	24
Telephones	24
Office hours	24
Address	24

# SPECIFICATIONS

## Overview

"Penny Perfect" is as close to perfect of any 74' Enclosed Bridge on the market today. Her fastidious captain has been with her from day one and the boat is spectacular. The mezzanine and cockpit have teak decks to compliment the Viking Lady Yellow hull sides. Her electronics are top notch and quite comprehensive. The four stateroom, five head layout is spacious and extremely comfortable. Every detail of this special offering has been carefully planned out and maintained to the highest degree. Please look at the full specifications for the detailed listing on this turn key.

She is Standing Tall and ready for your inspection.

## Basic Information

Category: Sport Fisherman	Model Year: 2006
Year Built: 2006	Country: United States
Coast Guard #: 738498	Fly Bridge: Yes
Cockpit: Yes	

## Dimensions

LOA: 74' 0" (22.56m)	Beam: 19' 9" (6.02m)
Max Draft: 5' 7" (1.70m)	

## Speed, Capacities and Weight

Displacement: 135000 Pounds	Water Capacity: 385 Gallons
Holding Tank: 130 Gallons	Fuel Capacity: 3050 Gallons

## Accommodations

Total Cabins: 4

Total Heads: 5

Captain Cabin: True

## Hull and Deck Information

Hull Material: Fiberglass

Deck Material: Fiberglass

Hull Configuration: Modified Deep Vee

Hull Color: Viking Lady Yellow

## Engine Information

Engines: 2

Manufacturer: MTU

Model: 16V2000M91

Engine Type: Inboard

Fuel Type: Diesel

---

# DETAILED INFORMATION

---

## Overview

---

Recent \$400,000 price reduction!!! "Penny Perfect" is as close to perfect of any 74' Enclosed Bridge on the market today. Her fastidious captain has been with her from day one and the boat is spectacular. The 2000 hour service was recently completed on the MTU 16V2000 M91 engines. The mezzanine and cockpit have teak decks to compliment the Viking Lady Yellow hull sides. Her electronics are top notch and quite comprehensive. The four stateroom, five head layout is spacious and extremely comfortable. Every detail of this special offering has been carefully planned out and maintained to the highest degree. Please look at the full specifications for the detailed listing on this turn key opportunity.

Recent annual services completed 8/2012 include: tune up, new raw water pumps, new heat exchangers, new belts and hoses and new installation of both generators. Main engine services included heat exchanger cleaning, new Air SEP's, new hoses to the gear and steering coolers, replaced 4 exhaust risers and hoses, including bypass hoses. In addition, both air condition R.W. pumps, chiller pump and all appropriate plumbing are new.

## Salon

---

- Teak high gloss interior wood package
- Custom salon carpeting
- Salon carpet runner throughout
- Clear ice maker concealed in teak cabinet
- Teak gloss valence boards
- Custom teak trimmed lambrequins
- Sharp Aquos 50" flat panel salon TV on up/down electric actuator
- Upgraded BOSE entertainment system
- Salon door with electric opener
- Salon sofa with cavernous storage and custom throw pillows
- Salon ottoman
- Ship's main electrical panel in teak cabinet by salon entry
- Salon bottle and drawer storage
- Hunter Douglas silhouette blinds
- Forward salon area dinette sofa with seat storage
- Teak dinette table and pedestal with cover
- 32" Flat panel TV above forward part of the dinette

---

## Galley

---

- (6) Sub Zero under the counter refrigerator/freezer drawers
- Custom granite counter tops (Golden Fantasy)
- Custom granite back splash
- Custom freestanding galley bar stools
- Polished brass Grohe faucet
- (4) Burner surface mount range
- Amtico Cherry Tick and Holly flooring
- Trash compactor
- Electric garbage disposal in sink
- Drawer storage
- Cabinet and dish storage below
- Extra deep slide cabinet overhead
- Convection/Microwave oven
- Galley lighting system

---

## Day Head

---

Located in the forward part of the salon just in front of the galley/dinette area

- Granite vanity tops
- Brass faucet
- Brass towel bar and rings
- Mirrored vanity with storage
- Amtico Cherry Tick and Holly flooring
- Headhunter head system
- Cavernous storage cabinet (used currently as tackle storage)
- Master A/V location storage cabinet

---

## Master Stateroom

---

- King size berth with custom headboard and wood pilasters facing fore and aft
- Cornered sofa lounge
- Sharp Aquos flat panel TV
- BOSE stereo system
- Custom wallpaper
- Custom shams, pillows & throw pillows
- Carpeting
- (2) Full stand-up hanging lockers with rod storage built in
- Custom make-up table with lighting and lift top mirror
- Memory foam mattress upgrade
- Ship's safe
- Lighting system on dimmer
- Under bed storage area
- Teak credenza
- Ocean Aire port cover with blackout slide screen



- Telephone system

---

## Master Head

---

- Custom vanity granite counter tops (Golden Fantasy)
- Linen closet
- Head Hunter head system
- Mirror vanity with cabinet storage
- Large separate shower with single acrylic door
- Amtico Cherry Tick and Holly flooring
- Lighting system
- Head exhaust fan
- Custom wallpaper

---

## VIP Stateroom

---

- Center lined queen berth with drawer storage underneath
- Elevated storage cabinets both port and starboard
- Sharp Aquos flat panel 20" TV
- Ocean Aire port cover with blackout slide screen
- Hanging locker
- Memory foam mattress upgrade
- Overhead lights with dimmer
- Reading lights

---

## VIP Head (En Suite)

---

- Custom granite counter tops
- Head Hunter head system
- Custom granite vanity
- Brass faucet
- Brass shower fixtures
- Mirror ceiling
- Mirror around upper vanity insert
- Gold frame shower door
- Solid brass towel bars and rings
- Teak face on lower vanity
- Medicine cabinet with mirrored doors
- Exhaust fan and air conditioning
- Stall shower
- Custom wallpaper

---

## Port Stateroom

---

- 15" LCD flat screen television
- 12V stereo/CD player
- Upper and lower bunks
- Designer bedspreads and pillow shams
- Carpeting
- Storage under lower bunk
- Cedar-lined hanging locker with bar for hanging clothes
- Stereo speakers

---

## Port Guest Head (En Suite)

---

- Head Hunter head system
- Custom granite vanity counter top
- Brass faucet
- Brass shower fixtures
- Mirror ceiling
- Mirror around upper vanity insert
- Solid brass towel bars and rings
- Teak face on lower vanity
- Stall shower
- Gold frame shower door
- Medicine cabinet with mirror doors
- Exhaust fan and air conditioning
- Custom wallpaper

---

## Crew Stateroom (Amidships Port)

---

- Sharp 15" LCD flat screen TV above hanging locker
- Engine room access door
- 12V CD player & stereo
- Additional telephone outlet
- Dimmer on overhead lights
- Teak drawer storage top
- Upper and lower bunks
- Bedspreads and pillow shams
- Night table with storage drawers
- Cedar-lined hanging locker with lower teak storage drawers
- Stereo speakers

---

## Crew Head (En Suite)

---

- Head Hunter head system
- Solid brass towel bars and rings

- Custom granite vanity counter top
- Brass faucet
- Brass shower fixtures
- Amtico Cherry Tick and Holly flooring
- Mirror ceiling
- Access door to engine room
- Mirror around upper vanity insert
- Teak face on lower vanity
- Stall shower
- Gold frame shower door
- Medicine cabinet with mirror doors
- Exhaust fan and air conditioning
- Custom wallpaper

## Companionway

---

- Whirlpool stand-up washer/dryer combo
- Gloss teak cabinetry used as extra storage
- Carpeting
- Carpet runner
- Baby ostrich Gelato wall covering material
- Dimmers on overhead lights
- Wrapped hatch carpet
- Central vacuum unit connection with accessories

## Electrical System

---

- (2) Onan 27.5kw generators (3300 hours)
- (2) 50 amp shore power cables on Glendenning electric reels
- CATV/phone hookup
- Charles Autophase C-Power shore power transformer
- (2) 24 volt Hubble electrical receptacles in cockpit
- Battery chargers
- Ships batteries - NEW

## Fly Bridge

---

Interior:

- Circular staircase access to fly bridge
- Port side wet bar with counter space

Exterior:

- Upper station area bench seating with

and drawer storage

- L-shaped sofa lounge
- Custom teak sofa table
- Fly bridge refrigerator with icemaker
- Carpeting
- Accent pillows
- 110v outlets
- Center lined ultra-leather upholstered Stidd captain's chair
- Ultra leather companion bench seats

cushions and storage

- Aft bridge rail with eight rod holders
- Hydraulic outrigger control switches
- Aft steering station with single lever controls and steering wheel
- BB Furuno Navnet system with 12" LCD monitor
- Auto pilot second station
- Icom 602 VHF radio with command mic

## Fly Bridge Electronics

- Fly bridge displays: VEI LCD (2) 15" displays and (3) 18" displays
- Primary radar: Furuno FR2127BB/DC Navnet 25KW Radar with 6.5' array
- Secondary radar: Furuno 1954C-BBnt Navnet 12KW Radar with 4' array
- Radar display: 18" VEI LCD display
- Fish finder: Furuno GP1920C-BBNT Navnet
- Transducers: 50KHZ, 200KHZ, 235KHZ
- Auto pilot: Furuno FAP-500
- VHF radios: (2) Icom 602
- Single side band: Icom 802
- Ship's camera system with multi view capability of the engine room areas and aft deck
- DDEC display panels
- Remote control panel for water maker
- VEI MARCI dedicated navigation PC and separate dedicated internet PC
- PC output to salon TV
- ARPA/AIS tracking module
- Furuno FA-150 AIS receiver
- XM satellite radio system
- NVT 1018i Thermal imaging system
- ACR 24vdc dual beam spotlight
- RF wireless mouse and mini keyboard
- New (3) VHF and (1) SSB Antennas

## Tower Electronics

- BB Furuno Navnet with (2) NEW KEP 12" monitors
- Auto pilot second station
- Icom 602 VHF radio

## Cockpit

---

- Mezzanine seating configuration
- Ice machine discharge into cockpit sole box
- Freshwater wash down
- Saltwater wash down
- Transom lift gate and transom door
- Transom swim steps
- Transom fish box equipped with six tuna tubes
- Misters in cockpit overhang
- Port and starboard under coaming storage lockers
- Teak cockpit and mezzanine decks
- Cockpit grill
- Release Marine unlimited teak fighting chair/rocket launcher on stainless pedestal
- (6) Haunch rod holders
- (4) In covering board rod holders
- Cockpit courtesy lights
- Live well in sole
- Mezzanine/cockpit freezer
- Refrigerated step drink box
- Engine room access
- Oversized Stainless scuppers

## Deck Equipment

---

- Marquipt 2000# davit on the fore deck
- Viking Lady Yellow hull sides
- Oval exhaust ports
- Lewmar hydraulic bow thruster
- Underwater exhaust
- Finished fiberglass exterior through hulls
- Prop pockets
- Washdown in forward anchor locker
- Rub rail painted to match gelcoat
- Lewmar V4 stainless steel hydraulic windlass (gypsy and drum)
- Hydraulic outriggers
- Palm Beach Towers full tuna tower with center ladder
- Bow rails
- Bow pulpit

---

## Other Ship's Systems

---

- Moritz systems monitor
- V-SAT V-7 satellite dish for worldwide internet
- KVH TVG6 24" Satellite TV dish for Sky-Mex
- 5 Sky-Mex receivers
- 5 Direct TV receivers (U.S.)
- (6) Underwater lights

---

## Engine Room/Mechanical Equipment

---

- DD/MTU 16V2000 M-91 engines (2000 hour service completed summer of 2010 by Saunders Yachtworks)
- Access door to crew's quarters
- 1600 GPD Village Marine water maker
- Eskimo ice machine
- Trolling valves
- Cruise Air chilled water air conditioning system
- Awl gripped engine room through hulls and sea strainers
- Oil changing system with line run for dockside extraction
- Dual power steering pumps
- Back up air conditioning sea water pump
- Head hunter fresh water pump
- Additional back-up freshwater pump
- Fuel/water separators on both generators
- Fuel priming pumps
- Fuel polishing system
- Fuel transfer system
- Underwater exhaust
- Bilge lights with magnetic switches
- Racor fuel filtration system
- Delta T forced air induction system
- Engine room air boxes
- (3) Fuel tanks
- Fuel shut off valves
- Macerator/over board discharge pump for head system
- Hard mounted tool box
- Fire suppression system
- Bilge pumps
- Engine room remote gauges at entryway

---

## Exclusions

---

Owner's personal items, tools, tackle, spare parts or any other items not listed herein at time of viewing.

---

## Exclusions

---

Owner's personal belongings.

---

## Disclaimer

---

The Company offers the details of this vessel or yacht in good faith but cannot guarantee or warrant the accuracy of this information nor warrant the condition of the vessel. A buyer should instruct his representatives, agents, or his surveyors, to investigate such details as the buyer desires validated. This vessel or yacht is offered subject to prior sale, price change, or withdrawal without notice.

# PHOTOS

Salon Port Side Arrangement



Salon Port Side Arrangement



Salon Sofa



Salon Dinette



Galley



Galley





**Day Head**



**Electrical Panel**



**Companionway**



**Washer & Dryer**



**Master Stateroom**



**Master Stateroom**



**Master Stateroom**



**Master Stateroom**



**Master Head**



**VIP Stateroom**





**VIP Forward**

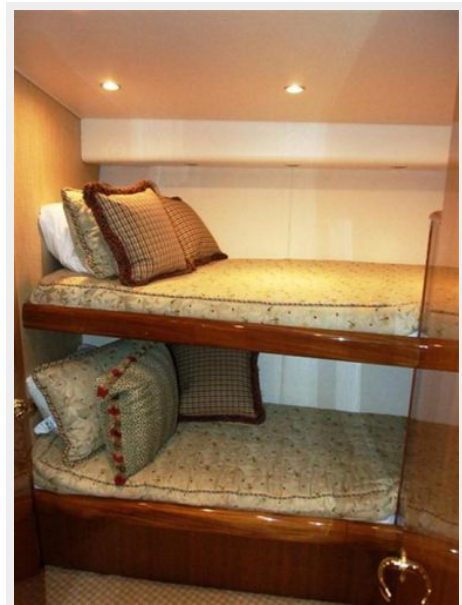


**VIP Head**



**Starboard Stateroom Forward**

**Starboard Stateroom Forward**



**Crew Head**



**Fly Bridge Electronics**



**Fly Bridge Electronics**



**Fly Bridge Sofa**



**Fly Bridge Wet Bar & TV**

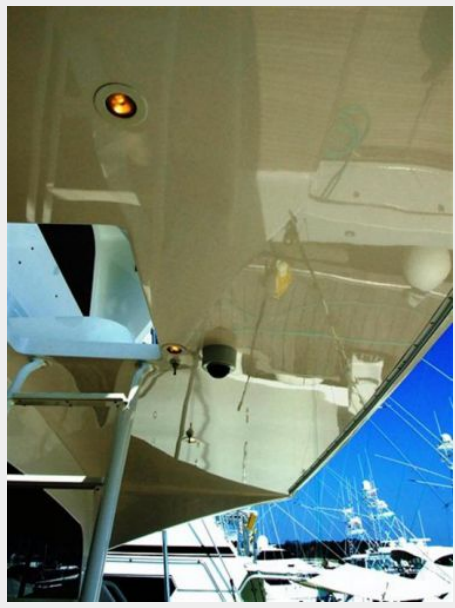


**Cockpit Mezzanine**





### Cockpit Overhang Camera & Misters



### Tuna Tubes

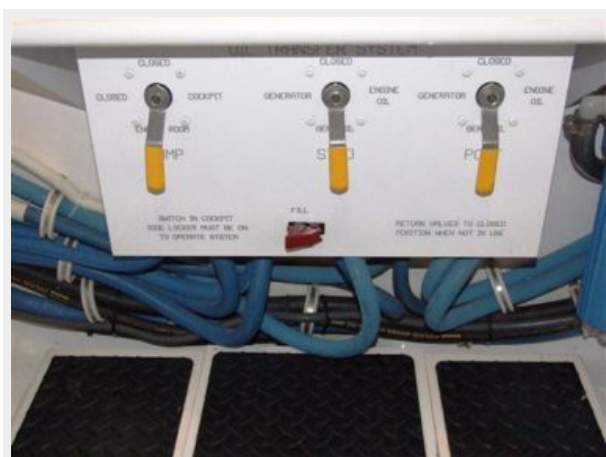


### Bow Pulpit Arrangement



### Davit Arrangement & Chocks



**Stern View****Engine Room Electrical Panel****Engine Room****Engine Room****Engine Room Port****Engine Room Starboard**



### Engine Room Ventilation Boxes



### Engine Room Water Maker



### Engine Room



# CONTACTS

---

Andrey Shestakov, leading yacht broker of the sales department of Shestakov Yacht Sales Inc. Shestakov Yacht Sales Inc., the official representative of the Miami/Fort Lauderdale FL headquarters.

## Contact details

---

Email:  
**andrey@shestakovyachtsales.com**

Web: [shestakovyachtsales.com/en/](http://shestakovyachtsales.com/en/)

## Telephones

---

USA: **+1(954)274-4435**

## Office hours

---

Monday – Saturday: **9:00 - 21:00 EDT**

Sunday: **closed**

## Address

---



Harbour Towne Marina, 850 NE 3rd St,  
STE 213, Dania, FL 33004