

GLASSEA — ANGEL



Builder: ANGEL

Year Built: 1986

Model: Trawler

Price: PRICE ON APPLICATION

Location: United States

LOA: 50' 0" (15.24m)

Beam: 15' 7" (4.75m)

Min Draft: 4' 0" (1.22m)

Cruise Speed: 10 Kts. (12 MPH)

Max Speed: 13 Kts. (15 MPH)

Our experienced yacht broker, Andrey Shestakov, will help you choose and buy a yacht that best suits your needs **GlasSea — ANGEL** from our catalogue. Presently, at Shestakov Yacht Sales Inc., we have a wide variety of yachts available on our sale's list. We also work in close contact with all the big yacht manufacturers from all over the world.

If you would like to buy a yacht **GlasSea — ANGEL** or would like help answering any questions concerning purchasing, selling or chartering a yacht, please call **+1(954)274-4435**

TABLE OF CONTENTS

TABLE OF CONTENTS	2
SPECIFICATIONS	3
Basic Information	3
Dimensions	3
Speed, Capacities and Weight	3
Accommodations	3
Hull and Deck Information	3
Engine Information	4
DETAILED INFORMATION	5
Introduction	5
Detailed Vessel Walkthrough	5
Main Salon	5
Galley	5
Pilothouse Electronics	6
Master Stateroom	6
Deck	7
Flybrige Electronics & Helm	7
Engine Details, Electrical & Mechanical Equipment	8
Broker's Remarks	8
Exclusions	8
Disclaimer	8
PHOTOS	9
CONTACTS	12
Contact details	12
Telephones	12
Office hours	12
Address	12

SPECIFICATIONS

Basic Information

Category: Trawler

Sub Category: Raised Pilothouse

Model Year: 1986

Year Built: 1986

Country: United States

Cockpit: Yes

Dimensions

LOA: 50' 0" (15.24m)

Beam: 15' 7" (4.75m)

Min Draft: 4' 0" (1.22m)

Speed, Capacities and Weight

Cruise Speed: 10 Kts. (12 MPH)

Max Speed: 13 Kts. (15 MPH)

Displacement: 77161.7917 Pounds

Water Capacity: 225 Gallons

Fuel Capacity: 550 Gallons

Accommodations

Total Cabins: 2

Hull and Deck Information

Hull Material: Fiberglass

Engine Information

Engines: 2

Manufacturer: Detroit Diesel

Model: 6-71

Engine Type: Inboard

Fuel Type: Diesel

DETAILED INFORMATION

Introduction

WOW! Take a look at this beautiful 1986/2008 50' Angel Med Yacht. Broker ranks her 10 out of 10. This boat is ready to go!! Owners have spent tens of thousands upgrading her. They are ready to move up.

Detailed Vessel Walkthrough

The GLASSEA was painted top to bottom in 2008 and has many other upgrades. This boat has two (2) private staterooms, two (2) heads, a very roomy salon and galley. Raised pilothouse and a flybridge with a large entertaining area on bridge. Has large bow and cockpit. This boat is absolutely beautiful!

Main Salon

- Large L shaped sofa with folding dinette.
- TV entertainment system
- Two occasional chairs with table set
- Beautiful west Indies style décor
- Custom blinds
- Custom loose woven carpet
- Teak paneling

Galley

- Large L-shaped tiled counter
- Tons of storage
- Built in double stainless sink
- Refrigerator/ Freezer
- 3 burner range oven
- Marble and tile counter tops

Pilothouse Electronics

- Teak parquet floors
- Vinyl overhead
- Overhead lights
- Sliding doors port / starboard
- Teak stairway to flybridge
- Stairway to salon
- Stairway below to staterooms
- Full controls, Gages
- Helms seat
- Helms mans birth or group bench seating
- Search lights
- Furuno radar
- Standard horizon depth sounder
- Danforth compass
- VHF radio
- Davis weather alert
- Pioneer stereo / speakers
- Trac vision satellite
- Trim tabs
- Windshield wipers
- Gemini security system

Master Stateroom

- Teak Parquet sole
- Built in queen birth with storage underneath
- Bed pillows, pillow shams, bed cover
- Built in hanging locker
- Counter top with drawers starboard and aft
- Vinyl overhead
- Plenty of storage
- Private head access
- 22" flat screen
- AC controls

Deck

- New painted nonskid fiberglass decks
- Engine room access
- Swim platform with swim ladder
- Outside bulk storage Freezer
- 55 lb Bruce anchor with 300' of 3/8 inch chain and 300' of 3/4 inch nylon rode
- 12 volt Ideal windless with deck switch
- Stainless steel bow rails
- New window shades
- Sea water washdown and fresh water washdown
- Dual stainless fender racks
- Aft deck walk through transom gate
- Ladder to flying bridge
- Large entertaining area
- New bimini top for bridge helm
- AC/DC lighting
- New Under water lights

Flybrige Electronics & Helm

- Bimini top
- Molded fiberglass helm
- 2 pedestal mounted helms chairs new cushions and covers
- Single Mast built on Radar arch
- Full instrumentation, controls and gages
- Stainless / Teak wheel
- Hynautic steering
- Simrad auto pilot
- Garmin 126 Gps Chartplotter
- Garmin 160 blue Fishfinder
- Rayline search light
- VHF radio
- 12 volt lighting
- Stereo speakers

Engine Details, Electrical & Mechanical Equipment

- Twin 6-71 Detroit's 310HP with 3900hrs
- Twin disc MG5050 reverse reduction gear 2:45.1
- Two 7lb Halon automatic engine room fire suppresser
- Two engine room blowers
- (3) Cruisair AC units
- 4 Bilge pumps
- Two 8KW Onan Generators -1500hrs
- 50 amp shore power
- Battery charger
- RC inverter
- (6) 12 volt 4D batteries

Broker's Remarks

This boat has been meticulously taken care of with no expenses spared. This boat will impress! Owners have their new boat picked out, and our ready to let GLASSEA go to her new lucky owners.

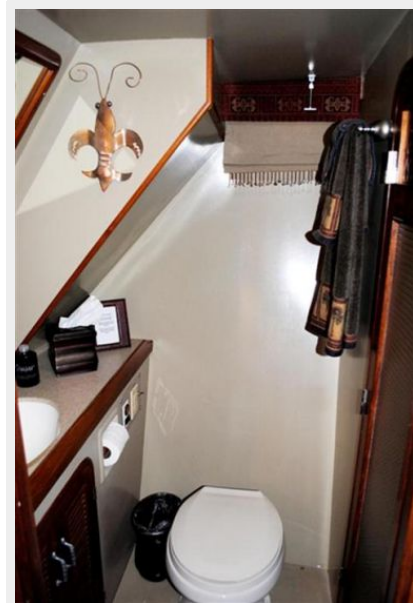
Exclusions

Owner's personal belongings.

Disclaimer

The Company offers the details of this vessel or yacht in good faith but cannot guarantee or warrant the accuracy of this information nor warrant the condition of the vessel. A buyer should instruct his representatives, agents, or his surveyors, to investigate such details as the buyer desires validated. This vessel or yacht is offered subject to prior sale, price change, or withdrawal without notice.

PHOTOS







CONTACTS

Andrey Shestakov, leading yacht broker of the sales department of Shestakov Yacht Sales Inc. Shestakov Yacht Sales Inc., the official representative of the Miami/Fort Lauderdale FL headquarters.

Contact details

Email: andrey@shestakovyachtsales.com

Web: shestakovyachtsales.com/en/

Telephones

USA: +1(954)274-4435

Office hours

Monday – Saturday: **9:00 - 21:00** EDT

Sunday: **closed**

Address



Harbour Towne Marina, 850 NE 3rd St,
STE 213, Dania, FL 33004