

PC60 (NEW BOAT SPEC) — HORIZON



Builder: HORIZON

LOA: 60' 9" (18.52m)

Year Built: 2019

Beam: 24' 6" (7.47m)

Model: Catamaran

Max Draft: 4' 9" (1.45m)

Price: PRICE ON APPLICATION

Location: United States

Our experienced yacht broker, Andrey Shestakov, will help you choose and buy a yacht that best suits your needs **PC60 (New Boat Spec) — HORIZON** from our catalogue. Presently, at **Shestakov Yacht Sales Inc.**, we have a wide variety of yachts available on our sale's list. We also work in close contact with all the big yacht manufacturers from all over the world.

If you would like to buy a yacht **PC60 (New Boat Spec) — HORIZON** or would like help answering any questions concerning purchasing, selling or chartering a yacht, please call **+1(954)274-4435**

TABLE OF CONTENTS

TABLE OF CONTENTS	2
SPECIFICATIONS	5
Overview	5
Basic Information	5
Dimensions	5
Speed, Capacities and Weight	5
Accommodations	6
Hull and Deck Information	6
DETAILED INFORMATION	7
Accommodations	7
Deck Equipment	8
Electrical System	9
Flybridge	9
Hull	9
Engine /Mechanical Equipment	10
Exclusions	10
Disclaimer	10
PHOTOS	11
Flybridge Exterior	11
Skylounge Exterior	11
Flybridge Exterior	11
Skylounge Exterior	11
Aft Deck	11
Flybridge	11
Open bridge Layout	12
Flybridge	12
Skylounge Layout	12
Swimstep	12

Salon	13
Salon	13
Salon	13
Galley	13
Salon	13
Galley	13
Master Stateroom	14
Master Stateroom	14
Master Stateroom	14
Master Head	14
VIP Stateroom	14
Twin Stateroom	14
Skylounge Exterior	15
Skylounge	15
Skylounge	15
Skylounge	15
Salon	15
Salon	15
Galley	16
Master Stateroom	16
Master Stateroom	16
VIP Stateroom	16
Twin Stateroom	16
Twin Stateroom	16
Twin Head	17
Crew	17
CONTACTS	18
Contact details	18
Telephones	18

Office hours	18
Address	18

SPECIFICATIONS

Overview

As a luxury power catamaran, the Horizon PC60 rises above previous multihull yachts with a blend of elegance, stability and efficiency. A comfortable en-suite three-stateroom layout is featured along with numerous interior and exterior entertaining areas. The PC60 also incorporates the ZF Joystick Maneuvering system in addition to the ZF Fly-by-wire Steering system, making operation and handling a breeze. With the PC60, elegance and rugged dependability are no longer a contradiction. Now offered with an optional pod drive system, as well as in an enclosed skylounge version.

****Please note that this listing represents a new model specification and not an actual hull in build. Please contact us for more information.****

Basic Information

Category: Catamaran

Model Year: 2019

Year Built: 2019

Country: United States

Vessel Top: Hardtop

Fly Bridge: Yes

Dimensions

LOA: 60' 9" (18.52m)

LWL: 53' 8" (16.36m)

Beam: 24' 6" (7.47m)

Max Draft: 4' 9" (1.45m)

Clearance: 26' 5" (8.05m)

MFG Length: 60' 9" (18.52m)

Speed, Capacities and Weight

Displacement: 78985 Pounds

Water Capacity: 300 Gallons

Holding Tank: 100 Gallons

Fuel Capacity: 1000 Gallons

Accommodations

Total Cabins: 3	Total Berths: 4
Sleeps: 6	Total Heads: 3

Hull and Deck Information

Hull Material: Fiberglass	Hull Configuration: Catamaran
---------------------------	-------------------------------

DETAILED INFORMATION

Accommodations

The PC60 features a magnificent aft deck with dinning for up to eight guests as well as a drinks serving counter with basin, fridge, icemaker and lots of storage. There are numerous dining, seating, sun bathing and lounging options offered, as well as abundant space for privacy or entertaining many guests. The spectacular flybridge offers a bar with basin, icemaker/fridge, BBQ, bar stools, comfortable seating with dinning option, dingy crane, chaise lounges and STIDD helm chair. Access to the flybridge is from the comfortable aft deck stairs. Interior stairs to salon is an option.

Salon

- 2 luxury sofas
- Side tables with storage
- Solid wood coffee table
- 37"-42" flat screen TV with surround sound, DVD and CD system

Bar

- Storage for drink bottles and glasses
- Storage cupboards
- Corian or granite bar counter

Galley

- Custom luxury cabinetry
- GE electric 4 plate stove
- GE oven & microwave
- GE stainless steel refrigerator/freezer
- GE Dish washer
- Double sinks with garbage disposal
- Under counter trash drawer

Master Stateroom

- 180 degree views through wrap around, tinted and tempered windows
- King size walk around bed
- Night stands with cupboards
- Bedside settee
- Large closets
- Ensuite bathroom with vanity, large basin, walk-in shower, separate toilet with basin and

cabinets, dressing area with full-height closets

VIP cabin

- Queen size bed - semi walk around
- Luxury mattress
- Night stands with cupboard, light switches and outlets
- En-suite bathroom with walk-in shower, head and basin
- Vanity

Guest Cabin

- 2 walk between twin beds
- Luxury mattress
- Night stands with drawers, light switches and outlets
- En-suite bathroom doubles as day head with walk-in shower, head and basin

Deck Equipment

- Nonskid deck
- Fiberglass cap rail
- Gunwale with external rub rail
- Locker for 24V anchor windlass
- Stainless steel safety rails
- Deck hatch for access to 63KG Delta anchor
- 175ft of high tensile 3/8" chain
- Fresh water anchor chain wash down
- Two bow storage lockers with access through flush deck hatches
- Large deck storage hatch
- 6 Opening port lights
- 2 hull side frameless and flush mounted windows, oval tinted and tempered glass
- 2 Deck hatches with blinds & screens
- Stainless steel framed salon door with 8' opening
- Self draining aft deck FRP curved sea with cushions
- Large solid wood cockpit table and seating for 8
- Two large curved steps down to large dive/swim platforms and swim ladder
- Cockpit lockers for storage
- Cockpit down lights
- Hot and cold fresh water shower recessed into aft coaming
- Fresh water and salt water deck wash
- Comfortable curved stairway with teak treads up to flybridge from aft deck
- Recessed fuel and water inlets

Electrical System

- 110V or 220V electrical supply from generator/shore power
- Shore power connector
- Chilled water air-conditioning with digital displays - multi zoned
- Premium DC distribution board with switches, voltmeter and amp meter
- Premium AC panel with switches/220v/50Amp dock inlets
- Fresh, black water & diesel tank gauges
- Engine start batteries
- Charger / Inverter 40000W
- 110v outlets in Salon/bar/galley/cabins/fly-bridge/aft deck/engine room

Flybridge

- Non-skid cambered deck with ample drainage
- Flybridge windscreen with stainless frame
- Navigation light selection panel
- Ample locker space for storage
- Wet bar with sink, hot and cold water, fridge/icemaker and barstools
- Luxurious cushioned lounging seating with Sunbrella covers
- Teak coffee table
- Helm station with stainless wheel Instrument consol with engine controls, chart plotters, instrument monitors and panels, fuel tank monitoring system
- 800lb hydraulic crane for tender
- Stidd helm chair
- Windlass remote controls
- Remote controls for spot light and ship's horn
- Bilge pump monitors and controls 5" Compass
- Access via stairs from aft deck
- Hardtop reinforced for instruments

Hull

- White gelcoat finish for hull above waterline
- One piece hull lamination, longitudinal stringers and keel to protect propellers and rudders
- Entire hull structure constructed using state-of-art SCRIMP for strength and weight reduction
- Solid Fiberglass below waterline
- High-density foam cored construction above water line

- Deck & superstructure constructed under SCRIMP International brand anti-fouling bottom paint, w/anti-osmosis treatment

Engine /Mechanical Equipment

Mechanical and Engine Details

- Twin CAT C12A 715 HP engines
- Dual racor filters
- Stainless steel shafts w/ 4 blade propellers
- Bronze P bracket
- Shaft and rudder packing glands with tide seals
- Stainless rudder with zinc plates
- Power Steering System
- Ventilation system with moisture eliminators
- 17.5kw or 21.5Kw Onan generator
- High water bilge pumps with alarms
- Engine access through hydraulic deck hatches in cockpit floor
- Automatic fire extinguishers

Utility Room

- 2 x 3 ton chilled water air conditioning compressors & circ pump
- Fuel transfer pumps
- Sea Fire extinguishers
- AC/DC distribution boxes and panel
- High volume AC fresh water pump

Exclusions

Owner's personal belongings.

Disclaimer

The Company offers the details of this vessel or yacht in good faith but cannot guarantee or warrant the accuracy of this information nor warrant the condition of the vessel. A buyer should instruct his representatives, agents, or his surveyors, to investigate such details as the buyer desires validated. This vessel or yacht is offered subject to prior sale, price change, or withdrawal without notice.

PHOTOS

Skylounge Exterior



Flybridge Exterior



Flybridge Exterior



Skylounge Exterior



Aft Deck



Flybridge



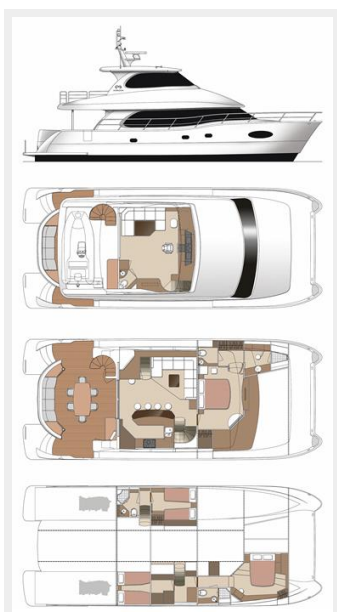
Flybridge



Open bridge Layout



Skylounge Layout



Swimstep



Salon



Salon



Salon



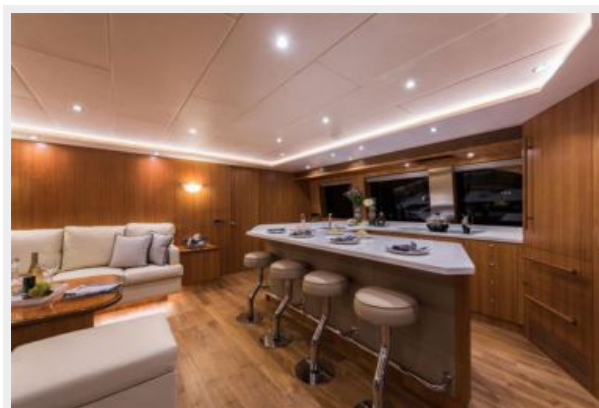
Galley



Salon



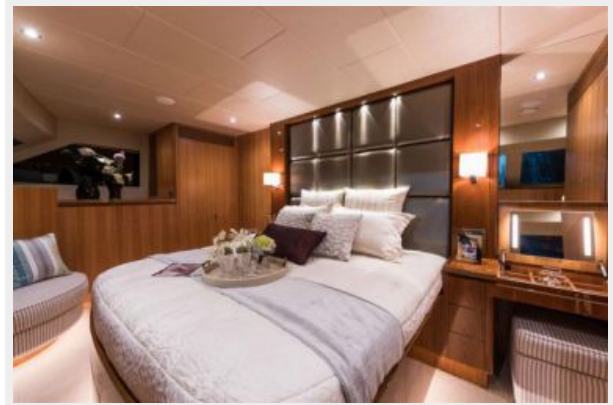
Galley



Master Stateroom



Master Stateroom



Master Stateroom



Master Head



VIP Stateroom



Twin Stateroom



Skylounge Exterior



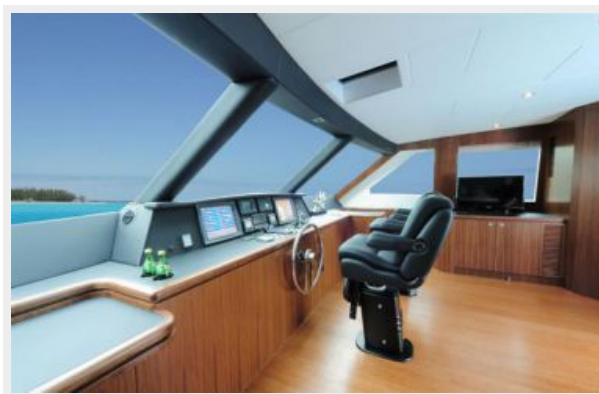
Skylounge



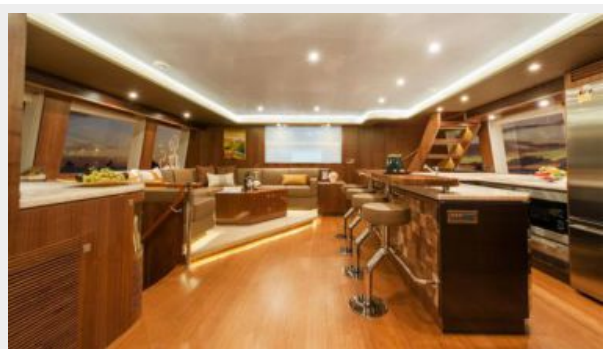
Skylounge



Skylounge



Salon



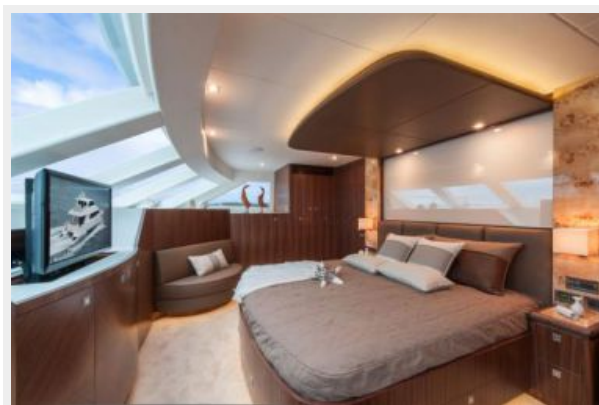
Salon



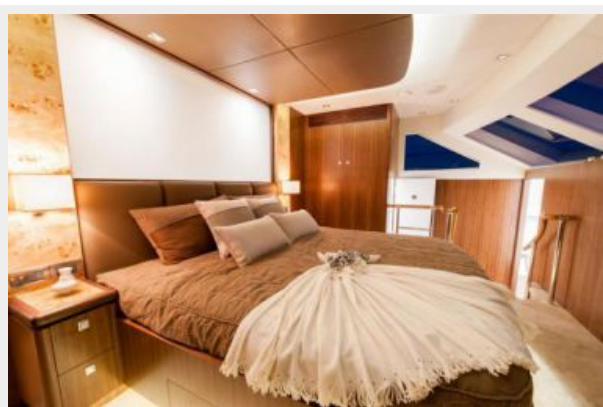
Galley



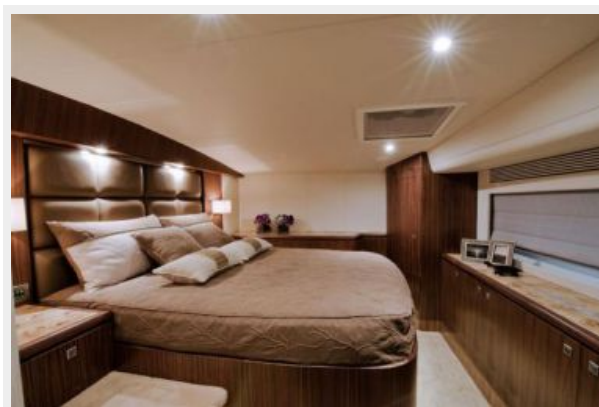
Master Stateroom



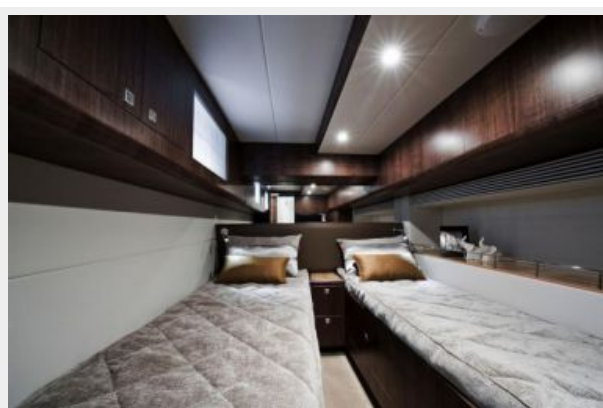
Master Stateroom



VIP Stateroom



Twin Stateroom



Twin Stateroom



Twin Head



Crew



CONTACTS

Andrey Shestakov, leading yacht broker of the sales department of Shestakov Yacht Sales Inc. Shestakov Yacht Sales Inc., the official representative of the Miami/Fort Lauderdale FL headquarters.

Contact details

Email: **andrey@shestakovyachtsales.com**

Web: shestakovyachtsales.com/en/

Telephones

USA: **+1(954)274-4435**

Office hours

Monday – Saturday: **9:00 - 21:00 EDT**

Sunday: **closed**

Address



Harbour Towne Marina, 850 NE 3rd St,
STE 213, Dania, FL 33004