

## HIGH ROLLER — BAGLIETTO



**Судостроитель:** BAGLIETTO

**Год постройки:** 2004

**Модель:** Моторная яхта

**Цена:** ЦЕНА ЯХТЫ ПО ЗАПРОСУ

**Местонахождение:** Монако

**Длина общая:** 104' 9" (31.92m)

**Ширина:** 23' 0" (7.00m)

**Макс. осадка:** 3' 10" (1.15m)

**Крейс. скорость:** 27 Kts. (31 MPH)

**Макс. скорость:** 33 Kts. (38 MPH)

Купить **HIGH ROLLER — BAGLIETTO** а также выбрать подходящую вам яхту из нашего каталога яхт вам поможет опытный яхтенный брокер Андрей Шестаков. На сегодняшний день компания **Shestakov Yacht Sales Inc.** имеет большое количество яхт в собственном списке продаж, а также тесно сотрудничает со всеми крупными яхтенными производителями по всему миру.

Для того чтобы купить яхту **HIGH ROLLER — BAGLIETTO** а также проконсультироваться по любому вопросу связанному с покупкой, продажей, чартером яхт позвоните по телефону **+7(918)465-66-44**.

# ОГЛАВЛЕНИЕ

ОГЛАВЛЕНИЕ	2
ХАРАКТЕРИСТИКИ	4
Обзор	4
Основная информация	4
Размеры	4
Скорость, вместимость и масса	4
Размещение	5
Корпус и палуба	5
Информация о двигателе	5
ПОДРОБНОЕ ОПИСАНИЕ	6
MAIN CHARACTERISTICS	6
MECHANICAL SPECIFICATION	6
EXTERIORS	6
INTERIORS	7
ACCOMMODATION	7
GALLEY / LAUNDRY	7
NAV/COM EQUIPMENT	7
AUDIOVISUAL EQUIPMENT	7
SECURITY / SAFETY EQUIPMENT	8
TENDERS & WATERTOYS	8
DECK EQUIPMENT	8
ANCHORAGE / MOORING	9
Исключения	9
Отказ от ответственности	9
ФОТОГРАФИИ	10
Guest Bathroom	10
Bridge	10
Master Bathroom	11

---

Layout	11
Aft Deck 1	12
Cruising1	12
Cruising3	12
Cruising2	12
Cruising5	13
КОНТАКТЫ	15
Контактная информация	15
Телефоны	15
Время работы	15
Адрес	15

# ХАРАКТЕРИСТИКИ

## Обзор

All Offers Invited! This modern and fast cruiser with her glass roof and sleek lines is a true *design masterpiece*. The owner is willing to a part exchange for other yacht or property. Make an Offer! • VAT paid • Fast & Sporty luxurious performance yacht • State-of-the-art entertainment and water activities • Versatile cabin layout: 3 double cabins / 1 double and 2 twins with an extra pullman in each • Stylish, minimalistic interior design by Francesco Paszkowski and Danielle Chopard • Classification: ABS (5-yr special survey completed in May 09 – Expiry date 27July2014)

## Основная информация

Тип судна: Моторная яхта

Модельный год: 2004

Год постройки: 2004

Страна: Monaco

Открытая палуба мостика: Да

## Размеры

Длина общая: 104' 9" (31.92m)

Ширина: 23' 0" (7.00m)

Макс. осадка: 3' 10" (1.15m)

## Скорость, вместимость и масса

Крейс. скорость: 27 Kts. (31 MPH)

Макс. скорость: 33 Kts. (38 MPH)

Дальность на макс. скорости: 420 Kts.

Водоизмещение: 185188.30008 Pounds

Вместимость воды: 528.344104 Gallons

Объем топливного бака: 3434.236676 Gallons

Расход топлива: 211.3376416 Gallons

---

## Размещение

---

Всего кают: 3

Спальные места: 8

Каюта капитана: Да

Каюты экипажа: 2

Спальных мест экипажа: 4

---

## Корпус и палуба

---

Материал корпуса: Aluminum

Дизайнер экстерьера: Francesco Paszkowski

Дизайнер интерьера: Francesco Paszkowski/Danielle Chopard

---

## Информация о двигателе

---

Двигатели: 2

Производитель: MTU

Модель: 12V 4000 M90

Тип двигателя: Inboard

Тип топлива: Diesel

# ПОДРОБНОЕ ОПИСАНИЕ

## MAIN CHARACTERISTICS

TYPE: Hard Top Twin Water-jet Baglietto BUILDER: Cantieri Navale Baglietto SPA EXTERIOR DESIGN: Francesco Paszkowski INTERIOR DESIGN: Francesco Paszkowski/ Danielle Chopard CRUISING SPEED: 27 knots with 50% liquid load MAXIMUM SPEED: 33 knots with 50% liquid load CLASSIFICATION: ABS (5-year special survey completed in May 09, expiry date 27.7.2014) CONSTRUCTION: Hull & S/structure Aluminium Type 5083/H321 GROSS TONNAGE: 140 DISPLACEMENT: 94,5 tons full load, 84 tons light

## MECHANICAL SPECIFICATION

ENGINES: 2 x 2,750 Hp MTU 12 V 4000 M90, 2,040 kW Installed on resilient mounts ENGINE HOURS: Pt 1132 h (on 23rd September 2013) Stbd 1131 h (on 23rd September 2013) FUEL CONSUMPTION: app. 800 l/h incl. generator RANGE (AT 35 KNOTS): 420 nm FUEL: 10,000 l (2,630 gallons) + 3,000 l extra tank FRESH WATER: 2,000 l (500 gallons) in one tank EXHAUST: Gas turbo-charging, charge air-cooling WATERJETS: 2 x KAMEWA 63II type GEARBOX: 2 x ZF (4650 NR) –flexible mounts TRANSMISSION: ZF (4,650 NR) REDUCTION RATIO: 2:1 STABILIZERS: 2 x trim tabs acting also as stabilizers BOW THRUSTER: Fixed-tunnel type, 35 kW – electric with soft start joystick controlled GENERATORS: 2 x Kohler of 40 kW, 380 V, 50 Hz GENERATOR HOURS: Pt 7100 h (on 23rd September 2013) Stbd 7200 h (on 23rd September 2013) ELECTRIC STARTING SYSTEM: 28 VDC 120 A, 2-pole SHORE POWER: 25m cable with C.E.E., 3 phase 50 A 3P+N+T plug TRANSFORMER: 1 x 3 Phase 50 KVA 50 Hz 380/380 V 50 A 3P+N/3P+N+T plug BATTERIES: All Gel type MAIN ENGINE START: 1 x Set batteries 360 Ah 24V recharged by alternator 6 x Cold starts for 1 x engine Service 1 x Set GENERATOR START: 2 x Sets of batteries of 180 Ah each for 2 x gens CHARGERS: 1 x manual 2 x Sets for charging gens 2 x Sets for charging engines (extras) EMERGENCY: 24 V for 8 hours - all communication/navigation/lights DESALINATOR: 1 x Idromar reverse osmosis with 7,000 l/day WATER MAKER: 1 x HOT WATER: 3 x Electric boilers of 80l each under accom. floor SEA WATER SEPARATOR: 1 x TOILET SYSTEM: Jets Vacuum SEWAGE SYSTEM: Super Mini Hamann FUEL CENTRIFUGE/SEPARATOR: 2 x each engine AIR CONDITIONING: Central with internal heat exchanger, sea water cooled thermostats in each room AIR COMPRESSOR: 1 x Hermetic compressor

## EXTERIORS

The deck is divided in three parts, under a uniform aluminium skin. The aft part hides a Zodiac Yachtline of 4,20 m tender and a water bike under a solid electro hydraulic cover; inside this storeroom there is a hidden crane for the launching, also painted in metallic grey, and there is enough space for the fenders and other voluminous equipment. Just in front there is the sun bathing area with more than four meters length, surrounded by clips to be able to fix a cover that

covers up the long cushions avoiding having to take them away. The third area, at the forward end of the bow, accentuates the purity of the lines of the boat, because the entire anchorage maneuver is hidden underneath flush hatch covers that conceal two windlasses and other large size fittings, to the point that a person can get inside up to half its height to be able to maneuver safely.

## INTERIORS

• Helm control station forward • Dining table for 12 people • Conversation area with 3 couches and 2 coffee tables • Modular layout with 3 double cabins • Teak floors

## ACCOMMODATION

Guest Cabins: Master Double Cabin with a Study 2 x Convertible cabin (Double/Twin) with an extra Pullman bed each Crew: 4 Crew in 2 Twin cabins All cabins are en-suite.

## GALLEY / LAUNDRY

• Fridge for guests and 1 x Fridge for Crew • Freezer • Microwave • Oven • Dish Washer • Washing Machine • Dryer

## NAV/COM EQUIPMENT

**NAVIGATION** • MAXSEA Electronic Charts • Magnetic Compass • Gyro Compass • Automatic Pilot • Echo Sounder with alarm and repeater @ crew mess, master's cabin • Radar • Transponder • GPS colour with alarm and repeater @ crew mess, master's cabin • Log • Anemometer **COMMUNICATION** • Mini M Sat Com • VHF (GMDSS A3) • SSB • EPIRP • Intercom in wheelhouse • Internal communication: Telephone exchange with 4 x external lines & 12 x internal connections allowing internal & external communication and is able to connect to GSM

## AUDIOVISUAL EQUIPMENT

**GENERAL** • TV Sat Antenna Sea Tel 2494 E with 60 cm dish & 80 cm Randome suitable for connection in Med Sea with Astra & Hot Bird gyroscopic antenna (with Internet 64 kbit capacity) • Kit of 15 m cables for antenna • 5 x Satellite receivers Humax • Mt 200 coaxial cable SAT703N for distribution **ENTERTAINMENT** • 42" Sony Plasma TV • Sony STR-CE675 Audio/video amplifier, Dolby Surround Prologic • Sony DVP-NS300 PAL/NTSC DVD Player multi standard • 1 x Video recorder Sony SLV-SE600B, tri standard (all the Mediterranean) with NTSC player • 1 x Bose System Acoustimass 6 complete with: — Loudness — 5 x Satellites — 1 x Set of cables — 5 x Brackets Bose UB20 — 1 x

Remote Control Sony RM-AV2100T **MAIN DECK** • CD Player Sony CDX-CA650, 4 x 50 W, sensor for remote control • 2 x Couple of Sony XS-F1022 loudspeakers (diameter 10cm) • Water-tight remote control for external areas Sony RMX10 • Couple of XS-MP61 Sony loudspeakers **MASTER CABIN** • 55" LCD Samsung, multi standard, with side loud speakers • DVD player Sharp DV620S, PAL/NTSC, zone 2 (Europe/Japan) • CD player Sony CDX-CA650, 4 x 50 W, sensor for remote control • Infra-red remote control Sony • Couple of Sony XS-F1022 loudspeakers (diameter 10 cm) **GUEST CABINS 1 & 2** • 2 x 15" LCD Sharp, multi standard • 2 x DVD player Sharp DV620S, PAL/NTSC, zone 2 (Europe/Japan) • 2 x CD player Sony CDX-CA360, 4 x 50 W • 2 x Couple of Sony XS-F1022 loudspeakers (diameter 10 cm) **CREW** • 14" Sharp TV • CD player Sony CDX-CA360, 4 x 50 W • Couple of Sony XS-F1022 loudspeakers (diameter 10 cm)

## SECURITY / SAFETY EQUIPMENT

**SECURITY** • Alarm panel in Wheelhouse • Monitoring & control system with the main station @ the wheelhouse area • CCTV System with control unit and monitor in the wheelhouse allowing to select the shots of each camera • 4 x Small coloured cameras: aft, forward, engine room etc **SAFETY** • 2 x Self inflatable life rafts for 8 people each on external cockpit • 4 x Life Buoys (two with night lights) mounted @ vessel's side • 16 x Personal life jackets • Self-inflatable life rafts for 8 people on hardtop • 21 x Personal Life Jackets • Radar reflector ECHO230 • Hand bearing compass IRIS 100 **FIRE FIGHTING** • CO2 Fire Fighting System in engine room • Main Fire Fighting System – Sea Water Type with 2 x Self-priming pumps • Fire hoses and nozzles – on the main deck • Fire & Smoke detection System throughout yacht • Portable powder and CO2 fire extinguisher • Full fireman's outfit with breathing apparatus • 5 x SOLAS approved Powder Extinguisher 6 kg **PUMPS** • Bilge/fire fighting pumps • 2 x Sea water pumps • 2 x fresh water pumps • Pumps for air conditioning • 2 x Black water vacuum pumps • 2 x Lube oil circulation pump • Handpump for lub oil extraction • PTO pump for Gearbox • Potable fire pump

## TENDERS & WATERTOYS

Tenders: Zodiac Yachtline 4,20 m Water Sports: • 1 x Waverunner Seadoo • Waterskis • Wakeboard • Snorkeling gear • Kiting gear

## DECK EQUIPMENT

• Sun cover for the wheelhouse • Protection awnings & canvas for flybridge instrument panel, pilot seat • Bathing platform with a hot/cold shower • Swimming platform built-in structure with one hydraulic swimming ladder • 4,5 m Electro-hydraulically retractable transom gangway with fibre optic illuminated



---

## ANCHORAGE / MOORING

---

• 4 x Bollard medium size on aft deck • 2 x Fairleads on aft deck • 2 x Bollard medium size on fore deck • 2 x Fairleads on fore deck • 2 x Bollard medium size on side deck • 2 x Fairleads on side deck • 2 x Galvanized steel anchors with anchor swivel and shackle • 137m galvanized steel chain without stud, grade 2, sliding on stainless steel rolls • 110m galvanized steel chain without stud, grade 2 sliding on stainless steel rolls • 2 x Electric warping winches fitted on the main deck with aluminium capstan drums • 2 x Anchor windlasses fitted at bow on the main deck type "Télémeccanique" fed by 380V, 3-phase, 50 Hz power with motor of 3,500 W each

---

## Исключения

---

При продаже яхты исключаются личные вещи владельца.

---

## Отказ от ответственности

---

Компания предоставляет описание судна или яхты добросовестно, но не может гарантировать точность этой информации, а также не ручается за техническое состояние. Покупатель должен проинструктировать своих агентов или оценщиков исследовать представленную информацию более подробно, по собственному желанию. Продажа судна или яхты, изменение цены или снятие с продажи будет происходить без предварительного уведомления.

# ФОТОГРАФИИ



**Guest Bathroom**



**Bridge**

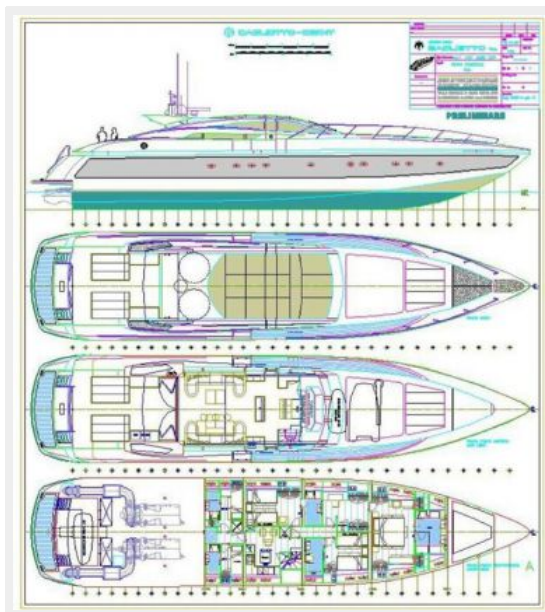




### Master Bathroom



### Layout





**Aft Deck 1**



**Cruising1**



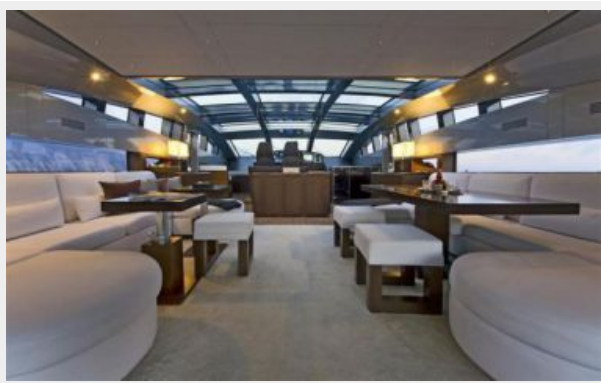
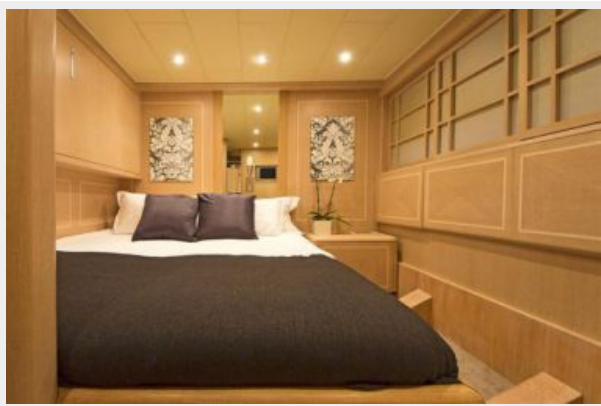
**Cruising3**



**Cruising2**



## Cruising5





# КОНТАКТЫ

---

Андрей Шестаков (Andrey Shestakov) – ведущий яхтенный брокер отдела продаж яхт и судов компании Shestakov Yacht Sales Inc. Официальный представитель Shestakov Yacht Sales Inc. для русскоговорящих клиентов в центральном офисе компании в Майами/Форт Лодердейл/Флорида/США.

## Контактная информация

---

Email: [andrey@shestakovyachtsales.com](mailto:andrey@shestakovyachtsales.com)

Web: [shestakovyachtsales.com](http://shestakovyachtsales.com)

## Телефоны

---

Краснодарский край: **+7(918)465-66-44**

США, Майами, Флорида: **+1(954)274-4435**

## Время работы

---

Понедельник – Суббота: **9:00 - 21:00**  
EDT

Воскресенье: **Закрито**

## Адрес

---



Harbour Towne Marina, 850 NE 3rd St,  
STE 213, Dania, FL 33004