

EP150 (NEW BOAT SPEC) — HORIZON



Builder: HORIZON

Year Built: 2022

Model: Expedition Yacht

Price: PRICE ON APPLICATION

Location: United States

LOA: 150' 0" (45.72m)

Beam: 29' 4" (8.94m)

Max Draft: 9' 2" (2.79m)

Our experienced yacht broker, Andrey Shestakov, will help you choose and buy a yacht that best suits your needs EP150 (New Boat Spec) — HORIZON from our catalogue. Presently, at Shestakov Yacht Sales Inc., we have a wide variety of yachts available on our sale's list. We also work in close contact with all the big yacht manufacturers from all over the world.

If you would like to buy a yacht EP150 (New Boat Spec) — HORIZON or would like help answering any questions concerning purchasing, selling or chartering a yacht, please call +1(954)274-4435

TABLE OF CONTENTS

TABLE OF CONTENTS	2
SPECIFICATIONS	5
Overview	5
Basic Information	5
Dimensions	5
Speed, Capacities and Weight	5
Accommodations	6
Hull and Deck Information	6
PHOTOS	7
Exterior	7
Exterior	7
Exterior	7
Exterior	7
Exterior	8
Exterior	8
Upper Deck	8
Upper Deck II	8
Upper Deck III	8
Upper Deck Jacuzzi	8
Bow Deck	9
Bridge Deck Aft	9
Bridge Deck Aft II	9
Bridge Deck Aft Seating	9
Aft Deck	9
Aft Deck Seating	9
Main Salon	10
Main Salon II	10
Main Salon III	10

Formal Dining	10
Master Office	10
Master	10
Master II	11
Starboard VIP	11
Starboard VIP II	11
Starboard VIP III	11
Starboard Twin Guest Stateroom	11
Guest Companionway	11
Guest Stairwell	12
Guest Companionway II	12
Captain's Cabin	12
Crew Quarters	12
Crew Mess	12
Crew Mess II	12
Pilothouse	13
Skyounge Salon	13
Gym II	13
Gym	13
Gym III	13
Gym/Spa	13
Spa II	14
Spa	14
General Layout	14
Engine Room	14
CONTACTS	15
Contact details	15
Telephones	15
Office hours	15

Address

15

SPECIFICATIONS

Overview

Please note that this listing represents a model specification for a new build and not an actual hull for sale. For more information on this model and build availability, please contact us*

Style, stability, strength and luxury combine effortlessly into one sophisticated package with the Horizon EP150. With exterior design and styling by J.C. Espinosa and the Horizon design team, the EP150 features BV Ice Classification, a bulbous bow and an optimized hull for superior stability and expedition yacht performance.

With the EP150's steel hull and aluminum superstructure, a grand interior accommodates guests in luxurious comfort, fitted from stem to stern with innovative equipment and amenities befitting a true superyacht. This is a yacht for the explorer who demands perfection and intends to live life to the fullest.

Basic Information

Category: Expedition Yacht

Model Year: 2022

Year Built: 2022

Country: United States

Vessel Top: Hardtop

Fly Bridge: Yes

Dimensions

LOA: 150' 0" (45.72m)

LWL: 133' 2" (40.59m)

Beam: 29' 4" (8.94m)

Max Draft: 9' 2" (2.79m)

Clearance: 49' 4" (15.04m)

Speed, Capacities and Weight

Displacement: 987835 Pounds

Water Capacity: 3000 Gallons

Holding Tank: 1080 Gallons

Fuel Capacity: 10600 Gallons

Accommodations

Total Cabins: 5

Total Berths: 7

Sleeps: 10

Total Heads: 8

Crew Cabin: 5

Crew Berths: 8

Crew Sleeps: 9

Crew Heads: 5

Hull and Deck Information

Hull Material: Steel

Hull Configuration: Displacement w/
Bulbous Bow

PHOTOS

Exterior



Exterior



Exterior



Exterior



Exterior



Exterior



Upper Deck



Upper Deck II



Upper Deck III



Upper Deck Jacuzzi



Bow Deck



Bridge Deck Aft



Bridge Deck Aft II



Bridge Deck Aft Seating



Aft Deck



Aft Deck Seating



Main Salon



Main Salon II



Main Salon III



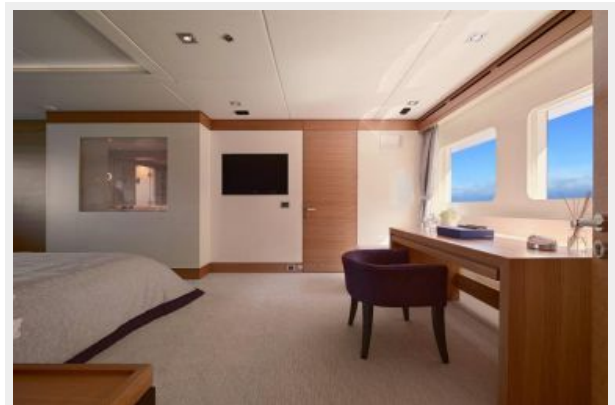
Formal Dining



Master Office



Master



Master II



Starboard VIP



Starboard VIP II



Starboard VIP III



Starboard Twin Guest Stateroom



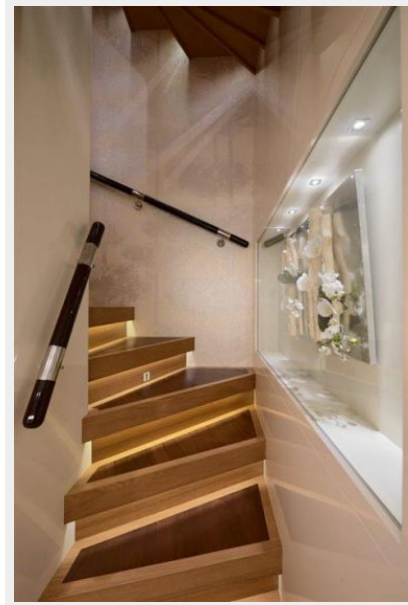
Guest Companionway



Guest Companionway II



Guest Stairwell



Captain's Cabin



Crew Quarters



Crew Mess



Crew Mess II



Pilothouse



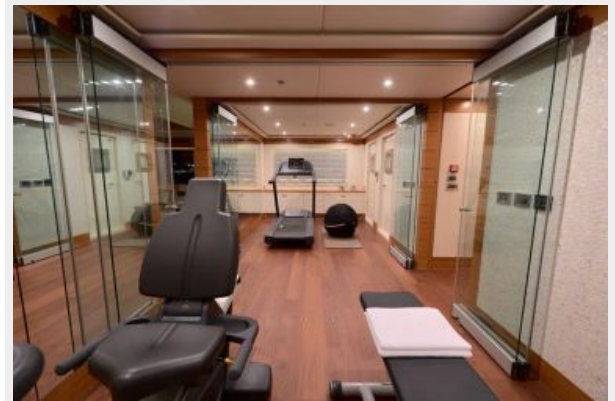
Skylounge Salon



Gym



Gym II



Gym III



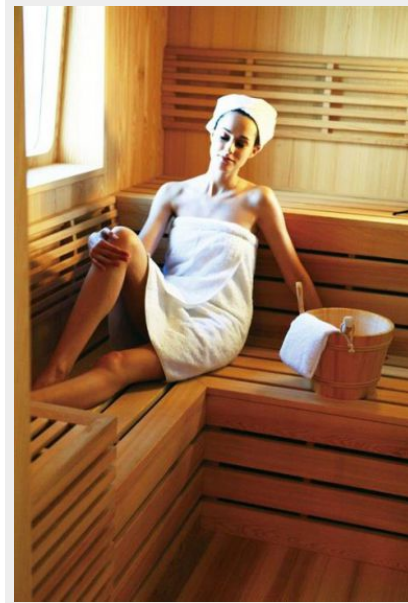
Gym/Spa



Spa



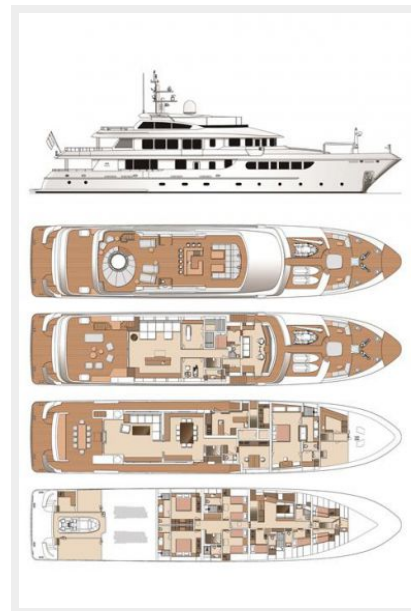
Spa II



Engine Room



General Layout



CONTACTS

Andrey Shestakov, leading yacht broker of the sales department of Shestakov Yacht Sales Inc. Shestakov Yacht Sales Inc., the official representative of the Miami/Fort Lauderdale FL headquarters.

Contact details

Email: andrey@shestakovyachtsales.com

Web: shestakovyachtsales.com/en/

Telephones

USA: +1(954)274-4435

Office hours

Monday – Saturday: **9:00 - 21:00** EDT

Sunday: **closed**

Address



Harbour Towne Marina, 850 NE 3rd St,
STE 213, Dania, FL 33004