

TALLY HO — DONZI



Судостроитель: DONZI

Год постройки: 1994

Модель: Катер для спортивной рыбалки

Цена: **ЦЕНА ЯХТЫ ПО ЗАПРОСУ**

Местонахождение: United States

Длина общая: 72' 0" (21.95m)

Ширина: 18' 7" (5.66m)

Мин. осадка: 5' 8" (1.73m)

Макс. осадка: 5' 11" (1.80m)

Крейс. скорость: 26 Kts. (30 MPH)

Макс. скорость: 31 Kts. (36 MPH)

Купить TALLY HO — DONZI а также выбрать подходящую вам яхту из нашего каталога яхт вам поможет опытный яхтенный брокер Андрей Шестаков. На сегодняшний день компания Shestakov Yacht Sales Inc. имеет большое количество яхт в собственном списке продаж, а также тесно сотрудничает со всеми крупными яхтенными производителями по всему миру.

Для того чтобы купить яхту TALLY HO — DONZI а также проконсультироваться по любому вопросу связанному с покупкой, продажей, чартером яхт позвоните по телефону **+7(918)465-66-44**.

ОГЛАВЛЕНИЕ

ОГЛАВЛЕНИЕ	2
ХАРАКТЕРИСТИКИ	7
Основная информация	7
Размеры	7
Скорость, вместимость и масса	7
Размещение	8
Корпус и палуба	8
Информация о двигателе	8
ПОДРОБНОЕ ОПИСАНИЕ	9
Walkthrough	9
Salon	9
Galley	10
Companionway	11
VIP Cabin	11
VIP Head	11
Day/Guest Head	11
Guest Cabin	12
Master Stateroom	12
Master Head	13
Crew Area	13
Fore Deck	14
Cockpit	14
Flybridge	16
Helm Electronics	17
Tower Equipment	18
Engine Room	19
Electrical	20
Remarks	22

Exclusions	22
Исключения	23
Отказ от ответственности	23
ФОТОГРАФИИ	24
Salon Looking Forward	24
Salon Looking Starboard	24
Entertainment Center	24
Entertainment Center Detail	24
Salon Looking Forward	24
Salon Looking Aft	24
Salon Communications Center	25
Dining Looking Starboard	25
Galley Looking Forward	25
Galley Looking to Port	25
Galley Looking Forward	25
Eye Level Freezer	25
Eye Level Refrigerator	26
Dishwasher	26
Hidden Microwave	26
Dish Storage	26
Laundry Center	26
Companionway Looking Forward	26
VIP Looking Aft	27
VIP Looking Forward	27
VIP Head	27
VIP Head	27
Guest Head	27
Guest Cabin	27
Master Looking Forward	28

Master Looking Aft to Starboard	28
Master Vanity	28
Master Looking Aft to Port	28
Master Head	28
Master Head	28
Companionway to Crew Area	29
Crew Berth Aft Starboard Side	29
Crew Berth Starboard Side	29
Crew Berth Portside	29
Crew Head	29
Foredeck	29
Cockpit	30
Forward Live Well	30
Aft Live Well	30
Cockpit Freezer	30
Cockpit Tackle Center	30
Murray Brothers Chair	30
Cockpit Sunshade	31
Salon Bulkhead	31
Flybridge Seating	31
Flybridge Forward	31
Flybridge Bar	31
Flybridge Bar	31
Flybridge Rod Storage	32
Helm Area	32
Overhead Box Detail	32
Overhead Box Detail	32
Overhead Box Detail	32
Portside Helm	32

Center Helm	33
Starboard Side Helm	33
Flybridge Panel	33
New Radar Arch	33
New Sat TV	33
Teaser Reels	33
View from Tower	34
Tower Controls	34
New Tower Electronics	34
Tower VHF	34
View from Tower	34
New LED Searchlights	34
Engine Room Looking Forward	35
Port Engine	35
Starboard Engine Room	35
Engine Room Looking Aft	35
Starboard Generator	35
Port Generator	35
Oil Change Panel	36
Twin Watermakers	36
Triple Chilled Water Compressor	36
Twin Chargers & Watermakers	36
Clean Bilges	36
Stern Shot	36
Other Profile	37
Alternate Profile	37
Layout	37
КОНТАКТЫ	38
Контактная информация	38

Телефоны	38
Время работы	38
Адрес	38

ХАРАКТЕРИСТИКИ

Основная информация

Тип судна: Катер для спортивной рыбалки

Подкатегория: Катер для спортивной рыбалки

Модельный год: 1995

Год постройки: 1994

Страна: United States

Верх: Full / Tuna Tower

Открытая палуба мостика: Да

Кубрик: Да

Размеры

Длина общая: 72' 0" (21.95m)

Длина по ватерлинии: 68' 0" (20.73m)

Длина палубы: 72' 0" (21.95m)

Ширина: 18' 7" (5.66m)

Мин. осадка: 5' 8" (1.73m)

Макс. осадка: 5' 11" (1.80m)

Длина привального бруса: 75' 0" (22.86m)

Скорость, вместимость и масса

Крейс. скорость: 26 Kts. (30 MPH)

Крейсерская скорость поворота: 1850 Kts.

Макс. скорость: 31 Kts. (36 MPH)

Макс. скорость поворота: 2250 Kts.

Водоизмещение: 83000 Pounds

Вместимость воды: 368 Gallons

Вместимость сточного бака: 60 Gallons

Объем топливного бака: 3000 Gallons

Размещение

Всего кают: 3

Всего коек: 4

Спальные места: 6

Всего ком. состава: 4

Каюты экипажа: 1

Койки экипажа: 2

Спальных мест экипажа: 1

Комм. состав экипажа: 1

Корпус и палуба

Материал корпуса: Fiberglass

Материал палубы: Teak

Комплектация корпуса: Modified V-Hull

Цвет корпуса: white

Отделка корпуса: Aluminum

Дизайнер корпуса: Donzi

Дизайнер экстерьера: Donzi Yachts

Дизайнер интерьера: Donzi Yachts

Информация о двигателе

Двигатели: 2

Производитель: Detroit Diesel

Модель: 16V92 DDEC

Тип двигателя: Inboard

Тип топлива: Diesel

ПОДРОБНОЕ ОПИСАНИЕ

Walkthrough

The layout of the 72 Donzi is that of a classic convertible with extra room in all areas of the vessel.

The huge Cockpit boasts an offset chair and everything needed to chase large prey long distances! The open Salon and Galley arrangement provides for dining and includes custom refrigeration. The Crew berths are just forward of the Engine Room and reached from either inside or via the outside Engine Room entrance. Midship is a spacious VIP Suite and over/under Guest Cabin with Head followed by a large Master Suite in the bow.

The Flybridge can only be described as enormous with plenty of seating and lots of luxuries including a dumb waiter! A full tuna tower tops things off.

Salon

Upon entering the Salon to port the wide open spaces afforded by the over 18 and a half foot beam become readily apparent.

To port is the two door electrical panel followed by the yacht's entertainment center that includes a 40' Vizio flat panel TV, a Sony Blue Ray player, a Sony audio/video control center and a Direct TV HDR Sat receiver/recorder. Two storage drawers below hold CD's and tapes.

Next forward is a two door corner cabinet pegged for dishes, etc.

To starboard is a newly upholstered leather U shaped settee with rod storage below and a hidden gun safe with a combination lock in the outboard backrest. A teak free form coffee table lies in front of the settee. Tambour doors access storage within. The aft end of the sofa has a built in end table with storage within and a table lamp above.

Next forward is an L shaped newly upholstered dining table dining settee to seat three to four people with storage below. The teak table with burlwood inlay can be lowered to provide an additional sleeping area. To port is the Galley. Also located in the Salon area are large windows on three sides all covered with dual position Silhouette shades framed in a pecan valance. AC delivery is both port and starboard through upholstered valances.

There are four overhead stereo speakers, a center channel speaker below the TV, fourteen overhead mini spots and a dumb waiter to the Flybridge.

Three upholstered stools face the Galley and are served by the enlarged Galley countertop.

Galley

The Galley is open to the Salon and is C shaped off the forward portside. Equipment includes:

Pirelli flooring

Corian countertops w/pecan trim

Double stainless steel sink w/a Grohe removable spray faucet

Four burner Ceran top Bosch cook top - new 2015

Gaggenau exhaust fan

Vesta stainless steel dishwasher - new 2016

Kitchen Aid stainless steel trash compactor - new 2015

Kitchen Aid stainless steel clear icemaker - new 2014

Bosch full size built in oven - new 2015

Kitchen Aid stainless steel microwave behind pecan door

(2) Door eye level stainless steel refrigerator

Eye level stainless steel freezer

(6) Teak drawers

(7) Teak cabinet doors

(8) Halogen mini spots

Sea 156 VHF, Sea 330 SB behind a tambour door adjacent to the Galley

Companionway

To the starboard side of the Salon is the Companionway to below. Four steps with a carpet runner and two outboard cabinets lead to the first landing which has a Whirlpool Heavy Duty Thin Twin stacked washer dryer behind teak doors. A door and steps lead aft and down the Crew Cabin. Heading forward are the three suites for the yacht's accommodations.

VIP Cabin

The portside VIP Cabin has a queen size berth cantilevered off of the aft portside area. There are two large drawers below the berth as well as rope lighting around the berth perimeter. An electro hydraulic assist opens the area under the berth for abundant storage. Overhead are two individually switched reading lights on a dimmer. A built in bookshelf with a drawer and a cabinet below are inboard. Outboard is a shelf with a phone and the cabin's chilled water AC controls followed by a full size cedar lined auto lit hanging locker. Centerline is access to the en suite Head. To starboard forward is a new 2015 28" Vizio HD LCD TV and a Fusion 700 AM/FM/CD/Sat radio ready/DVD player coupled to the cabin's stereo speakers. Below are four teak drawers. Also in this cabin are four overhead lights, a dressing mirror and a smoke alarm.

VIP Head

The en suite Head has a mica vanity with one cabinet below, an under mount sink and gold taps with a three shelf mirrored medicine cabinet above. The toilet is a china Microphor jet head with three storage lockers behind the head. The sole of this area is varnished parquet. The stall shower has a dark tinted plexiglass door and a handheld or wall mountable fixture with a light and an exhaust fan. Also in the Head are AC vents, three overhead mini spots and a sky screen/shade over the deck hatch above.

Day/Guest Head

Across the Companionway is the dual access Day/Guest Head. The mica vanity has one cabinet below with an under mount sink, two tone faucet and a three shelf mirrored door medicine cabinet above. The toilet is a Microphor jet head. The sole is varnished parquet. The

stall shower has a clear plexiglass door, a handheld or wall mountable fixture, a light and an exhaust fan. Also in this Head are AC vents, three overhead halogen mini spots and a GFCI outlet.

Guest Cabin

Next forward is the Guest Cabin with upper and lower berths outboard. There are three drawers under the lower berth and valance type AC delivery with rope lighting above the upper berth. Each berth has a reading light.

A cedar lined auto lit hanging locker is forward and inboard. A Sony AM/FM/CD stereo provides music.

Overhead is a deck hatch with a sliding sky screen/shade on the Bomar overhead hatch. Also in this area is a deck hatch to storage below, three overhead mini spots and a smoke alarm.

Master Stateroom

Next forward at the end of the centerline Companionway is the Master Suite. Starting all the way forward is a mirrored bulkhead with two halogen reading lights above. The tapered queen size pedestal berth has two large drawers below as well as rope lighting around the perimeter port and starboard. Built in teak shelves with small tambour doors serve as nightstands. There is additional storage under the berth via a pneumatically operated lift.

Aft to port is a cedar lined auto lit hanging locker with a safe within. Next aft is the entry to the en suite Head. On the starboard side going aft is the Cabin's entertainment center which includes a new 2015 28" Vizio HD LCD TV and a Fusion 700 AM/FM/CD/DVD/ Sat radio ready coupled to the cabin's stereo speakers. Below are two teak drawers and a storage cabinet followed by a cedar lined auto lit hanging locker to match that to port. A vanity with a stool, drawer and two large storage cabinets, one with a mirrored door is next aft.

Also in this cabin are eight overhead halogen mini spots, a sky screen/shade for the Bomar overhead hatch, two stereo speakers, a Gardall hidden safe, a smoke alarm and a hatch into a large under deck storage area.

Master Head

The Master Head is aft to port. The mica vanity has one storage cabinet below and an under mount China sink with gold fixtures above. Two mirrored panels, one with a three shelf medicine cabinet, are above. The toilet is a China Microphor jet head. The sole is varnished teak parquet. The stall shower has a dark tinted plexiglass doors, a light, an exhaust fan and a handheld or wall mountable shower fixture.

Also in the Head is an AC vent, three halogen mini spots and four cabinet doors for storage behind the head.

Crew Area

The Crew Area is entered via the main accommodation foyer or the Engine Room. Starting forward one walks down three Pirelli covered steps to two split berths. The single starboard berth has a large drawer and small locker as well as a large cabinet accessing the dual watermakers. The berth also has a reading light and an overhead halogen mini spot.

The portside area has two hanging lockers, two drawers and a storage cabinet leading to the outboard single berth. Also in this area is a Sony 13" TV, a Sony AM/FM/CD stereo, a telephone, a safe, ST 60 Raymarine digital depth, a reading light, an alarm panel for the two freezers, an alarm panel for six bilge pumps, a second alarm panel like that at the main electrical panel for smoke, high water and eight other ship functions.

Also in this area are stereo speakers and a central smoke alarm.

The Crew Head has a mica vanity with two cabinets below and under mount sink on a Corian countertop, a sink fixture that doubles as a shower head and a Vacuflush toilet to starboard. Also in this area are twin fluorescent lights and fore and aft shower curtains that lets the area between the vanity and head serve as a shower.

Fore Deck

Fiberglass non skid decks

Varnished teak toe rails

Welded aluminum bow rails

(3) Bomar deck hatches

Nautical Structures 2000 lb. low profile tender davit w/power rotation

Tender chocks

Fiberglass bow pulpit w/teak insert

Galley Maid windlass w/3/8 chain gypsy & rope capstan

Up & down foot switches for windlass

Chain stopper

Fortress FX 85 aluminum anchor 250' 3/4" nylon rode & chain lead

Stainless steel anchor chute

Welded bow pennant staff

Deck access rope locker

Centerline anchor line cleat

Dual spring line cleats

International navigation lights

Custom aluminum handrails on house sides

Dark blue painted window mask w/Blue Sunbrella cover

Cockpit

Teak covering boards

Teak over fiberglass Cockpit deck

Padded Cockpit coaming bolsters

Live well on transom w/divider & dead light

(2) Salt water wash downs w/quick release fittings

(2) Freshwater wash downs w/quick release fittings

(2) Freshwater inlets w/quick release fittings

Offset Murray Brothers fighting chair w/cover & removable cushions

Folding Cockpit sunshade w/bridge release knuckle

Cockpit Teonneau cover from sunshade to transom

Transom door and gate

Second live well to portside forward

Top loading stainless steel lined bait freezer

Bait prep station w/sink

(4) Teak tackle drawers & storage cuddies behind fiberglass doors

Custom drink cooler in Salon steps

Cockpit Engine Room access

Port & starboard under coaming gaf lockers

(6) Flush mount rod holders in covering boards

(6) Flush mount rod holders in port & starboard pylasters

(2) Stereo speakers

(5) Overhead halogen lights in overhead

8 Tread aluminum Flybridge ladder w/starboard treads

Removable 7' catch well under deck

Hot & cold shower adjacent to transom door

Under coaming lights

Salon entry door w/two teak steps up (steps new 2015)

Backlit etched glass marlin in aft Salon window

Oberdorfer fish box drain pump

Flybridge

The Flybridge is entered via a starboard side ladder from the Cockpit. The massive helm is centerline and to port. Forward of the helm is a large U shaped seating that comfortably sits eight. Three separate hatches access abundant storage under the seating. The white vinyl cushions are removable. In the center of the seating is a large fixed height table with varnished teak trim. The dumb waiter from below is accessed from under the table. Outboard of the seating to port is a stainless steel top loading freezer.

Under the brow of the Flybridge is an access door with cavernous storage to include storage for eleven rods and reels and a freshwater wash down spigot. Next outboard is a teak cabinet with a U Line icemaker. Next aft is a fiberglass covered cabinet with a stainless steel sink and Gaggenau electric grill. Below are three teak drawers. A lockable tinted plexiglass rod locker is next aft. Additional features of this area include:

Fiberglass non skid decks

(3) Side clear vinyl enclosure w/a center U Zip

Courtesy deck lights

(3) Overhead halogen mini spots

Built in U Line refrigerator under console

Console access hatch to area under console

(3) Vent panels in forward side enclosure

Stereo speakers

(2) Cannon overhead mounted teaser reels

(3) Murray Brothers varnished helm seat w/footrests & removable cushions & cover

(7) Place rocket launcher on aft FB rail

New console cover 2016

Bauer dive compressor

Helm Electronics

Simrad Taiyo TF L 1550 radio direction finder

Raytheon Ray 430 loud hailer

SEA 330 SSB w/remote mic

Robertson AP 45 autopilot

(2) Go Light spotlight controls - new 2016

Garmin 12" 7612 color plotter/sounder/radar - new 2016 Garmin 16" 7616 XSV color plotter/sounder/radar - new 2016 Garmin 72 mile open 6' scanner - new 2016 (2) Garmin VHF 200 w/remote mic - new 2016 (2) Garmin 4" color data screen GMI 20 - new 2016 Fusion MSVD 750 AM/FM/CD/Blue Tooth stereo - new 2016 Engine Room CCTV camera - new 2016 Cockpit CCTV camera - new 2016 Garmin AIS 300 black box transceiver – new 2016 Garmin Sirius XM weather receiver – new 2016 Robertson FU 91 followup jog steering

(2) DDEC ECM's

Hydraulic/power steering helm wheel Robertson RI 101 rudder angle indicator

Trim tab controls

Windlass controls

Single lever "Sturdy" electronic engine controls

Fuel management system w/(7) VDO gauges & (2) supply & (2) return rotary switches for moving fuel to any of (7) tanks

Emergency backup engine control system

Trolling valve system

Locker w/house phone

Locker w/alarm panel for bilges, smoke, high water & six other functions

FB electrical panel w/(34) breaker protected circuits

Ritchie 6" magnetic compass

Tower Equipment

12 Step Pipewelders tuna tower

Fiberglass hardtop

Center rigger

(2) Aft facing quartz lights

Fiberglass hardtop on buggy tower

Belly band & three person seat

Tower helm cover

SSB tuner

One forward facing quartz light

Go Light LED searchlights - new 2016

(2) Flag halyards

Fiberglass control box

(2) DDEC ECM's

Separate single level "Sturdy" engine controls

(2) Garmin 4" color screens GMI 20 - new 2016

Robertson FU 91 follow up job steering controls

14" Stainless steel helm wheel

Garmin 200 VHF - new 2016

Start/stop buttons

Terrestrial TV antenna

ACR EPIRB - new 2016

Buell triple air horns

Garmin 6' 12 KW radar scanner - new 2016

Hailer horn KVH Trac Vision TV 5 Direct TV Sat dome – new 2016

Engine Room

6 Point 120 volt oil change system w/Quick Release fittings, gauge, reversible pump & (2) X gallon storage tanks

Dual triple Racor filters w/vacuum gauges

(3) DC incandescent Engine Room lights

(5) AC fluorescent lights

(2) 12 Volt fuel priming pumps

Marine Air Cockpit cooler & freezer compressors

Auto dampening Engine Room air vents

Start/stop buttons for engines w/DDEC EDM's

Teak grate Engine Room flooring

Fiberglass battery boxes

Chrome engine package

Coolant recovery bottles for main engines

Storage for 4 step stainless steel T type swim ladder

Door into Crew Area

(2) 35 lb. Halon fixed Engine Room fire control system

Freshwater spigot in Engine Room

Salt water spigot in Engine Room

Spray shields on stuffing boxes

Twin Disc 2.07:1 transmission ratios

3 1/2" Stainless steel prop shafts

Enclosed shaft tubes - Roscioli speed package

(2) 500 Racor generator filters

Fiberglass & stainless exhaust system rebuilt recently

2 Cylinder Daytona air compressor

(2) Baldor Engine Room blowers

External sea strainers

Crash pumps on each engine

30 Gallon Rudd hot water heater

(2) Universal Aqua Technologies 600 GPD watermakers

(2) 5 MCM pre filters for watermaker

Nutone central vacuum system

20 Gallon remote storage tank for air compressor

UV Sterilizer for watermaker systems

(3) Marine Air 24,000 BTU chilled water compressors

(7) Marine Air air handlers (2) 12 Volt Johnson fuel priming pumps (6) Auto/manual bilge pumps

Electrical

12 Volt DC panel w/(15) breaker protected circuits

24 Volt DC panel w/(15) breaker protected circuits

Bilge pump monitor panel for (6) bilge pumps w/3 cycle counters

5 Point high water alarm monitor

5 Point smoke alarm monitor

Holding tank level alarm

Watermaker product alarm

AC circulation pump alarm

Halon discharge alarm

12 Volt low voltage alarm

24 Volt low voltage alarm

4 Point analog DC volt meter

Analog 24 volt amp meter

Analog 12 volt amp meter

Analog 240 volt volt meter

Analog frequency meter

(2) Generator start/stop controls

Battery parallel switch

Dual port/starboard cord selector switches

4 Position rotary switch to select power source for ship's service

(2) AC analog amp meters

(50) 120 Volt breaker protected circuits

(11) 240 Volt breaker protected circuits

4 Position rotary switch to select power source for air cond. service

(3) Compressor cool/heat selector switches

(9) Air conditioner breakers

(2) Analog amp meters for air conditioning load

Shore power control panel at Engine Room entrance w/3 position step up transformer controls & (6) output breakers

(2) Analog shore voltage meters

(2) Analog ship's voltage meters

Portside 30 KW Northern Lights genset in sound shield, 2621 hours

Starboard 30 KW Northern Lights genset in sound shield, 2672 hours

Heart/Interface Freedom 25 inverter/charger

(6) Guest battery switches

DDEC battery backup selectors

(6) 8D Deca Gel Cell batteries

(2) 60 Amp Vanner battery equalizers

25 Amp 12 volt Mastervolt battery charger

40 Amp 24 volt Charles 5000 SP Series battery charger

(2) Acme isolation transformers

Remarks

Note: The main engines received an inframe overhaul March 2015 including the following work:

Gasket kits Cylinder kits: pistons, rings & liners Connecting rod bearings: connecting rod nuts & bolts Replace main bearings Reliabilt standard cylinder heads Rebuild DDEC injectors, oil & filters Pressure test cooling system Fresh water hoses, clamps & fittings Rebuilt turbochargers Oil 40 wt. Nalcool/PowerCool Test run engine Misc.: gaskets, zincs, seals, nuts & bolts, sealant, cleaner, aerosol paint, etc. Reliabilt fuel pump assembly Thermostats & seals Oil pan gasket Disassemble, clean & test: heat exchanger, aftercooler, booster cooler Rebuild raw water pumps Replace freshwater pump Rebuild blower assemblies Raw water hoses, clamps & fittings Fuel filters: primary & secondary Pressure test fuel system Sea trial

TALLY HO has had only three owners. The first built her for long range fishing expeditions and sold her after building a 120' motoryacht. The second owner has used her locally for fishing/cruising and has put her on the market to pursue other interests. Always captain maintained, she represents a well maintained convertible capable of cruising long distances in almost any weather.

As of December 2014, this 72' Donzi is owned by a charitable foundation who is intent on liquidating the yacht with very attractive terms! Both main engines just rebuilt March 2015. In early 2016 she was updated with new navigation and entertainment electronics as well as new Galley appliances.

Exclusions

While every effort was made to list all pertinent included equipment aboard TALLY HO, there are some personal belongings aboard. Prospective purchasers should assume any item not specifically mentioned herein will not convey at closing.

Исключения

При продаже яхты исключаются личные вещи владельца.

Отказ от ответственности

Компания предоставляет описание судна или яхты добросовестно, но не может гарантировать точность этой информации, а также не ручается за техническое состояние. Покупатель должен проинструктировать своих агентов или оценщиков исследовать представленную информацию более подробно, по собственному желанию. Продажа судна или яхты, изменение цены или снятие с продажи будет происходить без предварительного уведомления.

ФОТОГРАФИИ

Salon Looking Forward



Salon Looking Starboard



Entertainment Center



Entertainment Center Detail



Salon Looking Forward



Salon Looking Aft



Salon Communications Center

Dining Looking Starboard



Galley Looking Forward



Galley Looking to Port



Galley Looking Forward



Eye Level Freezer



Eye Level Refrigerator



Dishwasher



Hidden Microwave



Dish Storage



Laundry Center



Companionway Looking Forward



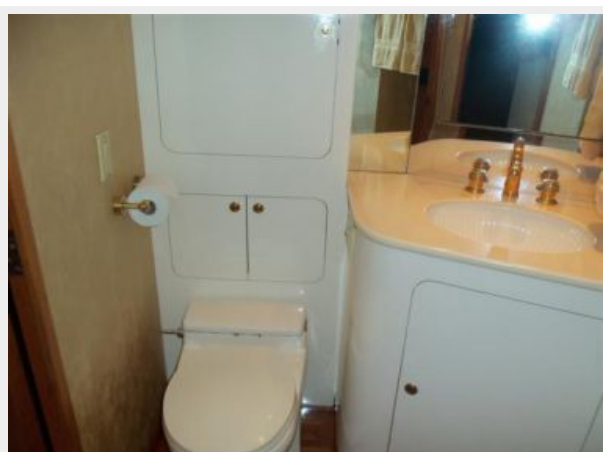
VIP Looking Aft



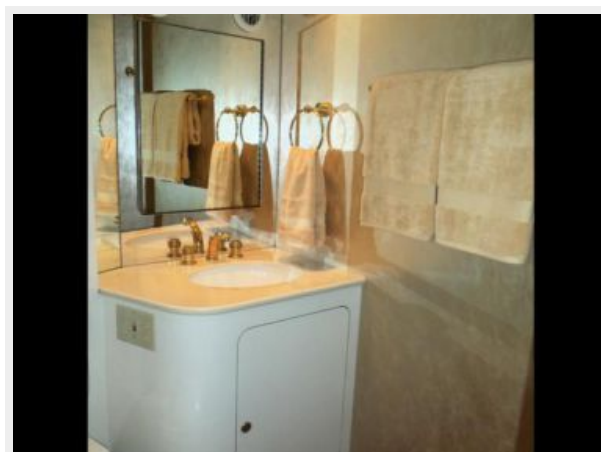
VIP Looking Forward



VIP Head



VIP Head



Guest Head



Guest Cabin



Master Looking Forward



Master Looking Aft to Starboard



Master Vanity



Master Looking Aft to Port



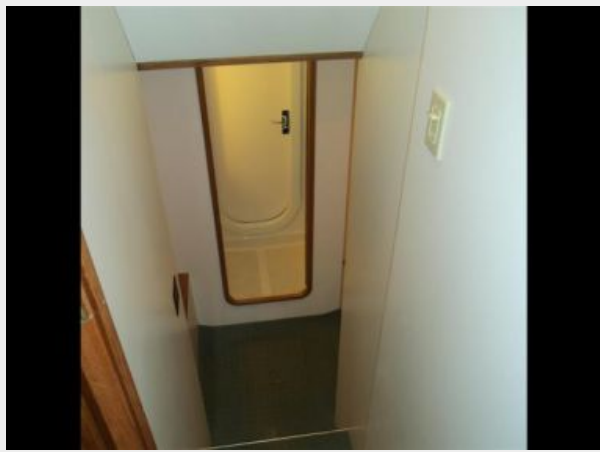
Master Head



Master Head



Companionway to Crew Area



Crew Berth Aft Starboard Side



Crew Berth Starboard Side



Crew Berth Portside



Crew Head



Foredeck



Cockpit



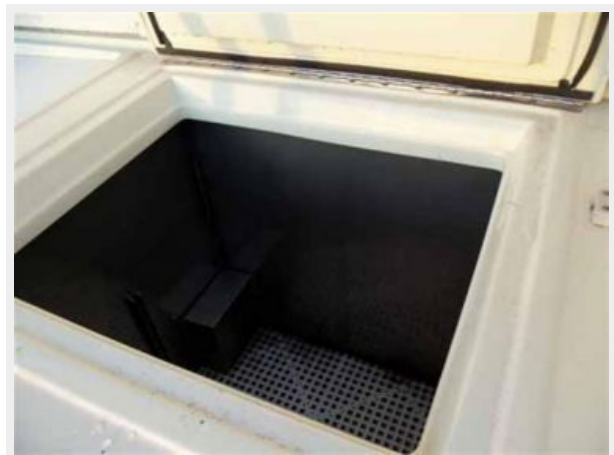
Forward Live Well



Aft Live Well



Cockpit Freezer



Cockpit Tackle Center



Murray Brothers Chair



Cockpit Sunshade



Salon Bulkhead



Flybridge Seating



Flybridge Forward



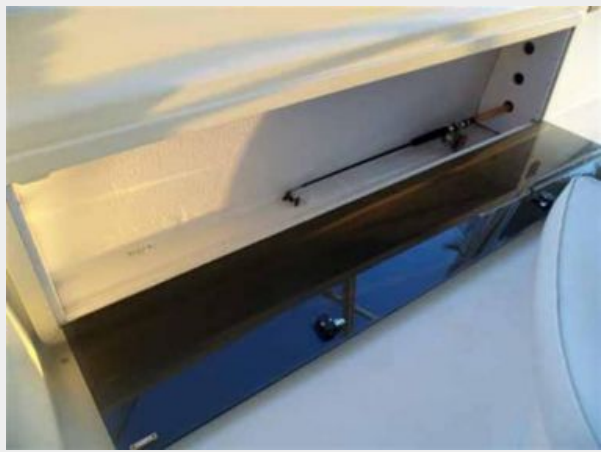
Flybridge Bar



Flybridge Bar



Flybridge Rod Storage



Helm Area



Overhead Box Detail



Overhead Box Detail



Overhead Box Detail



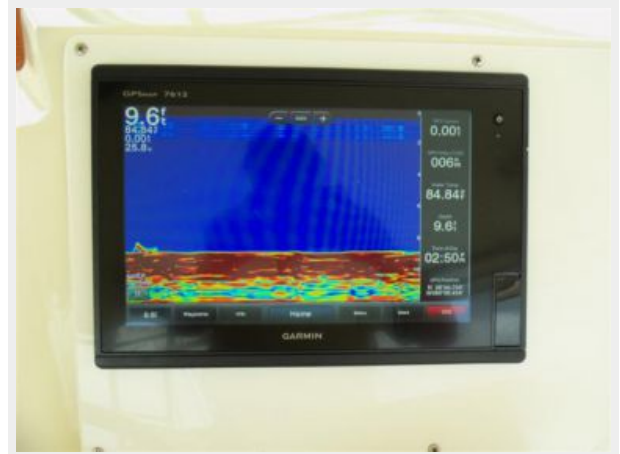
Portside Helm



Center Helm



Starboard Side Helm



Flybridge Panel



New Radar Arch



New Sat TV



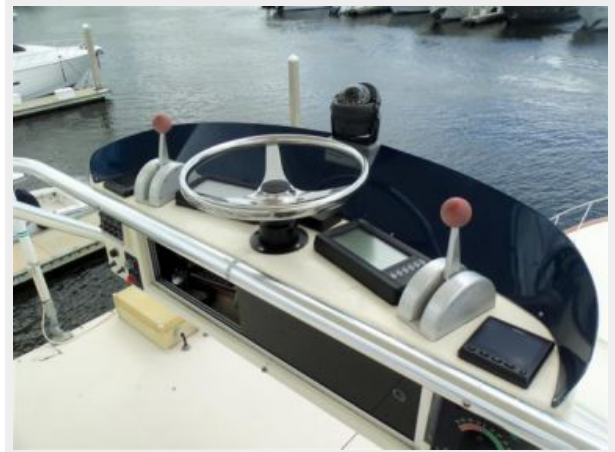
Teaser Reels



View from Tower



Tower Controls



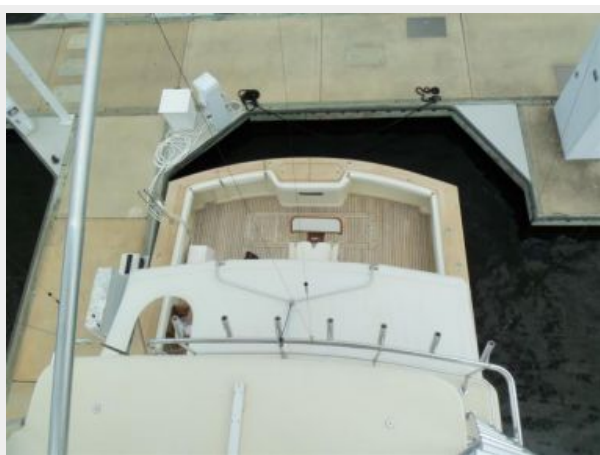
New Tower Electronics



Tower VHF



View from Tower



New LED Searchlights



Engine Room Looking Forward



Port Engine



Starboard Engine Room



Engine Room Looking Aft



Starboard Generator



Port Generator



Oil Change Panel



Twin Watermakers



Triple Chilled Water Compressor



Twin Chargers & Watermakers



Clean Bilges



Stern Shot



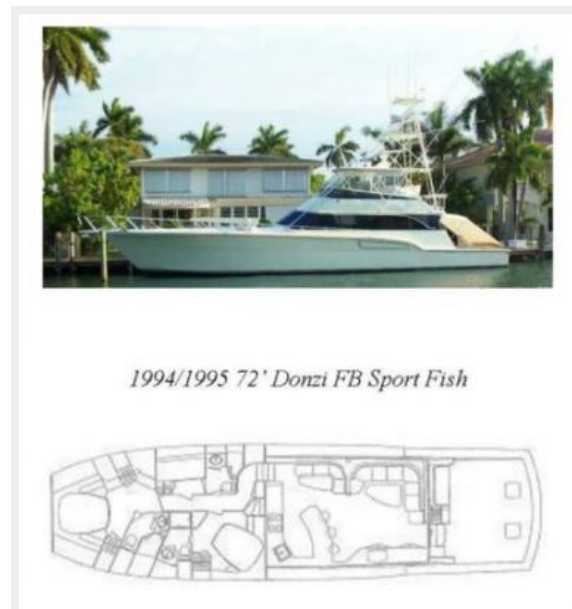
Other Profile



Alternate Profile



Layout



КОНТАКТЫ

Андрей Шестаков (Andrey Shestakov) – ведущий яхтенный брокер отдела продаж яхт и судов компании Shestakov Yacht Sales Inc. Официальный представитель Shestakov Yacht Sales Inc. для русскоговорящих клиентов в центральном офисе компании в Майами/Форт Лодердейл/Флорида/США.

Контактная информация

Email: andrey@shestakovyachtsales.com

Web: shestakovyachtsales.com

Телефоны

Краснодарский край: **+7(918)465-66-44**

США, Майами, Флорида: **+1(954)274-4435**

Время работы

Понедельник – Суббота: **9:00 - 21:00**
EDT

Воскресенье: **Закрыто**

Адрес



Harbour Towne Marina, 850 NE 3rd St,
STE 213, Dania, FL 33004