

NICARA — AQUA STAR



Builder: AQUA STAR

Year Built: 2003

Model: Motor Yacht

Price: PRICE ON APPLICATION

Location: Spain

LOA: 47' 0" (14.33m)

Beam: 15' 0" (4.57m)

Max Draft: 4' 0" (1.22m)

Our experienced yacht broker, Andrey Shestakov, will help you choose and buy a yacht that best suits your needs **NICARA — AQUA STAR** from our catalogue. Presently, at Shestakov Yacht Sales Inc., we have a wide variety of yachts available on our sale's list. We also work in close contact with all the big yacht manufacturers from all over the world.

If you would like to buy a yacht **NICARA — AQUA STAR** or would like help answering any questions concerning purchasing, selling or chartering a yacht, please call **+1(954)274-4435**

TABLE OF CONTENTS

TABLE OF CONTENTS	2
SPECIFICATIONS	4
Overview	4
Basic Information	4
Dimensions	4
Speed, Capacities and Weight	4
Accommodations	4
Hull and Deck Information	5
Engine Information	5
DETAILED INFORMATION	6
Construction	6
Machinery	6
Electrical Systems	7
Plumbing Systems	7
Tankage	7
Navigation Equipment	8
Domestic Equipment	8
Accommodation	9
Deck Equipment	11
Remarks	12
Exclusions	12
Disclaimer	12
PHOTOS	13
CONTACTS	19
Contact details	19
Telephones	19
Office hours	19
Address	19

SPECIFICATIONS

Overview

A well-kept and highly spec'd late example of this fabulous all-rounder, known for the ride, handling, comfort and ability. Very well priced.

Basic Information

Category: Motor Yacht

Sub Category: Semi-Displacement

Model Year: 2003

Year Built: 2003

Country: Spain

Fly Bridge: Yes

Cockpit: Yes

Dimensions

LOA: 47' 0" (14.33m)

LWL: 42' 0" (12.80m)

Beam: 15' 0" (4.57m)

Max Draft: 4' 0" (1.22m)

Speed, Capacities and Weight

Displacement: 34171.65061 Pounds

Fuel Capacity: 600.463074196 Gallons

Accommodations

Total Cabins: 2

Total Berths: 6

Total Heads: 2

Hull and Deck Information

Hull Material: GRP

Deck Material: Teak

Hull Configuration: Semi-Displacement

Hull Color: Navy Blue

Hull Designer: Aqua-Star / Freivokh

Engine Information

Engines: 2

Manufacturer: Volvo Penta

Model: TAMD75P

Engine Type: Inboard

Fuel Type: Diesel

DETAILED INFORMATION

Construction

Overall Measured Length: 48'5" including 2' pulpit.

RCD Status: The yacht conforms with the essential safety requirements of Directive 94/25EC (Recreational Craft Directive) and is categorised B.

Hull, Deck & Superstructure Construction:

- GRP construction.
- Navy blue hull (painted topsides 2008).
- Teak laid decks.
- Semi displacement.
- Topsides were Awlgrip painted.

Machinery

Engine & Gearboxes:

- 2 x 480 hp Volvo Penta TAM75P EDC on shafts.
- ZF 2:1 Gearboxes.

Maintenance & Performance:

- Engine hours – approx 694 as of March 2014.
- Engines last serviced June 2011.

Propulsion & Steering:

- 4 x Blade prop + 2 spares.

- Hydraulic steering to wheelhouse and flybridge.
- Ropecutters.
- Bow and stern thrusters (stern currently not in service).

Electrical Systems

Voltage Systems:

- 220 and 12v sockets, throughout the yacht.

Battery Banks:

- Heart interface battery state meter.
- 6 Heavy duty 12v batteries (1 generator, 2 engine, 3 domestic). All new 2009.

Battery Chargers:

- Sterling 4step 4 output 12v charger (new 2009)

Generator:

- Kohler 9EFOZ 9kw Generator.
- Generator hours – approx 518 as of March 2014.

Plumbing Systems

Bilge Pumps:

- 5 x Bilge pumps.

Tankage

Fuel:

- 2 x 250 gallon fuel tanks approx with crossfeed pump (2273 litres).

Navigation Equipment

- Raymarine RL80C Radar.
- Raymarine RC631 Chartplotter.
- Raymarine ST60 Tridata.
- Raymarine ST6001+ Autopilot.
- Raymarine 215E DSC VHF.
- Plastimo Compass.
- Eagle Fish Mark 160

All with flybridge repeaters.

- Bennet Trintabs.
- Eagle 160 Fishfinder.
- ICS Nav6 Navtex.
- ACR EBIRB 406

Domestic Equipment

Misc. catalogue manuals, large number of engine, toilet, pump etc spares.

Galley:

- Whirlpool grill/oven
- Whirlpool 4 ring halogen hob.
- Electrolux combination microwave.
- Isotherm fridge.
- Twin bowl stainless steel sinks.
- Fire extinguisher and blanket.

Heads/Showers:

- Aft deck hot & cold shower.
 - 2 x 12 volt electric vacuflush toilets.
 - Head has Mini-bath and shower with folding screen.
 - Holding tank.

Heating & Ventilation:

- 5 x Warm air demisters.
- 3 x Reverse cycle air con. Cruisair SMX11 throughout.
- Vortex Dehumidifier.

Accommodation

*Description of layout from forward:**Forward Guest Cabin:*

- Tiered V Berth arrangement with ample storage.

Port Side Heads Compartment:

- Teak grating.
- Inset basin in Corian top.
- Hot + cold pressurized water.
- Shower.
- Vacuflush toilet.

Starboard Side Dinette:

- U shaped seating for 5.
- Drop down table forming spacious double berth.
- Full height modesty curtain.
- Lockers.

Galley:

- All appliances are electric.
- Corian worktop.
- Extensive cupboards and lockers.

Main Saloon:

- U shaped seating to port.
- Extending table.
- Extensive cupboards, lockers and drawers.
- Access to engine room and deep lazarette.
- Twin helm seat.
- Twin pilot seat folding to extend port seating.

Aft Cabin:

- Double island bed.
- Extensive lockers.
- Drawers & further storage.
- Access top engine room.

Aft Heads Compartment:

- Corian topped basin.

- Hot + cold pressurized water.
- Mini bath + shower.
- Vacuflush toilet.
- Teak grating.

Deck Equipment

General:

- Besenzoni hydraulic passarelle/crane.
- Aft deck stainless steel boarding ladder from teak decked bathing platform.
- Aft deck with stainless steel folding bimini top, seating bench, all with sunbrella in navy fabric.
- Side teak steps to flybridge with teak deck, cockpit table and seating for 5/6. All with Sunbrella fabric inc.
- Flybridge helm station and double seat.
- Stainless steel radar arch with antenna etc.
- Foredeck has stainless steel guardrails and access to anchor locker.
- Electric winch.
- Screen wash & wipers.

Anchoring & Mooring Equipment:

- Lofrans windlass with deck foot and 2 helm controls, 20kg Bruce anchor and 70m chain. Operated from helm, flybridge and foredeck.

Covers, Canvas & Cushions:

- Sunbrella fitted covers to seating, flybridge helm, aft deck doors etc.
- Folding bimini to aft deck with blue Sunbrella fabric.

Safety Equipment:

- Liferaft (out of service).

Remarks

NICARA is a great example of her class and has been consistently maintained by this owner. She offers superb sea keeping together with comfortable and spacious accommodation. Also she has lots of deck space.

Exclusions

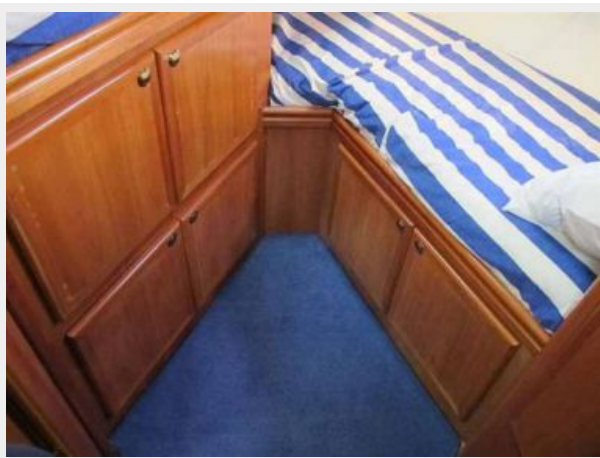
Owner's personal belongings.

Disclaimer

The Company offers the details of this vessel or yacht in good faith but cannot guarantee or warrant the accuracy of this information nor warrant the condition of the vessel. A buyer should instruct his representatives, agents, or his surveyors, to investigate such details as the buyer desires validated. This vessel or yacht is offered subject to prior sale, price change, or withdrawal without notice.

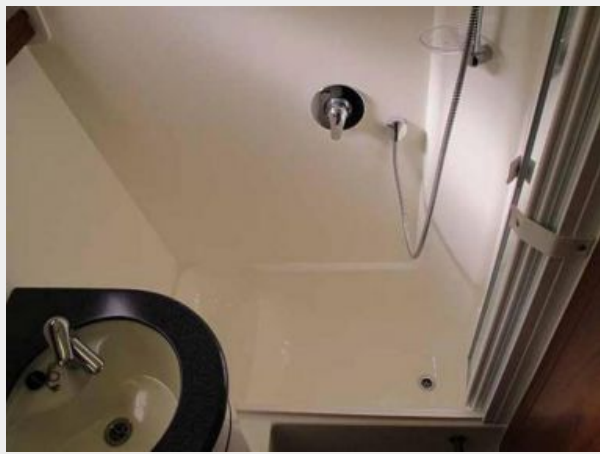
PHOTOS













CONTACTS

Andrey Shestakov, leading yacht broker of the sales department of Shestakov Yacht Sales Inc. Shestakov Yacht Sales Inc., the official representative of the Miami/Fort Lauderdale FL headquarters.

Contact details

Email: andrey@shestakovyachtsales.com

Web: shestakovyachtsales.com/en/

Telephones

USA: +1(954)274-4435

Office hours

Monday – Saturday: **9:00 - 21:00** EDT

Sunday: **closed**

Address



Harbour Towne Marina, 850 NE 3rd St,
STE 213, Dania, FL 33004