

## 2000 37' MAXUM 3700 SCR — MAXUM



**Builder:** MAXUM

**Year Built:** 2000

**Model:** Cruiser

**Price:** PRICE ON APPLICATION

**Location:** United States

**LOA:** 37' 0" (11.28m)

**Beam:** 13' 0" (3.96m)

**Max Draft:** 3' 8" (1.09m)

**Cruise Speed:** 27 Kts. (31 MPH)

**Max Speed:** 31 Kts. (36 MPH)

Our experienced yacht broker, Andrey Shestakov, will help you choose and buy a yacht that best suits your needs 2000 37' Maxum 3700 SCR — MAXUM from our catalogue. Presently, at Shestakov Yacht Sales Inc., we have a wide variety of yachts available on our sale's list. We also work in close contact with all the big yacht manufacturers from all over the world.

If you would like to buy a yacht 2000 37' Maxum 3700 SCR — MAXUM or would like help answering any questions concerning purchasing, selling or chartering a yacht, please call +1(954)274-4435

---

# TABLE OF CONTENTS

---

TABLE OF CONTENTS	2
SPECIFICATIONS	3
Overview	3
Basic Information	3
Dimensions	3
Speed, Capacities and Weight	3
Hull and Deck Information	3
Engine Information	4
DETAILED INFORMATION	5
Electronics and Navigational Equipment	5
Remarks	5
Vessel Walkthrough	5
Exclusions	6
Disclaimer	6
PHOTOS	7
CONTACTS	24
Contact details	24
Telephones	24
Office hours	24
Address	24

---

# SPECIFICATIONS

---

## Overview

---

2000, 37' MAXUM 3700 SCR - w/Twin Cummins Diesels, Generator & A/C

## Basic Information

---

**Category:** Cruiser

**Sub Category:** Express

**Model Year:** 2000

**Year Built:** 2000

**Country:** United States

**Cockpit:** Yes

## Dimensions

---

**LOA:** 37' 0" (11.28m)

**Beam:** 13' 0" (3.96m)

**Max Draft:** 3' 8" (1.09m)

## Speed, Capacities and Weight

---

**Cruise Speed:** 27 Kts. (31 MPH)

**Max Speed:** 31 Kts. (36 MPH)

**Displacement:** 20700 Pounds

**Water Capacity:** 65 Gallons

**Holding Tank:** 40 Gallons

**Fuel Capacity:** 244 Gallons

## Hull and Deck Information

---

**Hull Material:** Fiberglass

---

## Engine Information

---

**Engines:** 2

**Manufacturer:** Cummins

**Model:** Diamond Edition Turbo Charged  
Diesels

**Engine Type:** I/O

**Fuel Type:** Diesel

---

## DETAILED INFORMATION

---

---

### Electronics and Navigational Equipment

---

: GARMIN 2010C w/3D Differential; GARMIN 3010C w/real-time weather, wind speed, wave height and is tied into the Garmin Radar; Raytheon ST-60 Depth Sounder Autohelm Series; Raytheon ST-6000 Auto Pilot Autohelm Series; Raytheon Speed Indicator Autohelm Series; Clarion AM/FM/CD Stereo System w/Speakers; I-COM VHF Marine Radio IC-M502 w/Distress; Danforth Illuminated Compass; Bennett trim Tabs; Lewmar Electric Windlass Anchor System; Remote Spotlight and all of your standard MAXUM 3700 SCR Helm Instrumentation. Below Deck you will find a Panasonic color TV w/VHS in the master stateroom; CLARION AM/FM/CD XM Stereo System with DCZ625 ProAudio Optical Digital Output Six Disc Changer.

---

### Remarks

---

If you have been shopping new yachts and have realized the major savings in purchasing a well maintained pre-owned yacht, BOATS & DREAMS is the yacht you've been looking for! The owner is extremely motivated to sell and open to seriously consider all offers.

---

### Vessel Walkthrough

---

If you did not already know what the year of this beautiful, well maintained MAXUM 3700 SCR was and walked up to it, you would swear she looks more like a 2010 from her appeal! From bow to stern, exterior to interior, the TLC that has been put into BOATS & DREAMS really shines through. Starting aft is a large integrated swim platform, large storage trunks with hot/cold fresh water spigot and entry door to the deck. Moving forward into the cockpit you will find more than ample seating for your guests with the upholstery showing in excellent condition as well as the canvas and eisenglass enclosure. The dinette table stows away in the engine room (see photo below) and is easily placed in the aft deck seating area. The U-Shaped seating to starboard has a pull out extension that converts that entire aft seating area into a very large tanning bed. To port is a U-Line freezer, wet bar and sink. You will also find ample storage compartments located throughout the cockpit area including a very large cooler/storage area under the passenger seat at the helm. The forward bow area has a very large snap in tanning bed and drink holders to further utilize all of the space this large 37 footer has to offer. The cockpit carpeting for the deck area is like brand new and has never been used.

Below deck, BOATS & DREAMS sleeps six adults, two (2) in the forward master stateroom, two (2) in the twin berth cabin located aft and two (2) in the dinette / berth conversion. The

privacy head is located to port and equipped with a sink, shower, VacuFlush head system and locking door. The carpeting throughout the vessel shows like new thanks to the protective carpet runners the owner purchased for this boat when new. The Galley features a two burner stove, microwave, NorCold refrigerator, stainless steel sink and lots of storage space. You will find your A/C, D/C Generator control panel conveniently located for easy access on the starboard side of the guest stateroom right when you walk down the stairs to go below deck. The 8.0kw Westerbeke Diesel Generator has only about 220 hours and equipped with sound shielding. In addition to the Generator sound shielding, the owner has added upgraded sound shielding to the engine hatch making it extra quiet when cruising.

## Exclusions

---

Owner's personal belongings.

## Disclaimer

---

The Company offers the details of this vessel or yacht in good faith but cannot guarantee or warrant the accuracy of this information nor warrant the condition of the vessel. A buyer should instruct his representatives, agents, or his surveyors, to investigate such details as the buyer desires validated. This vessel or yacht is offered subject to prior sale, price change, or withdrawal without notice.

# PHOTOS





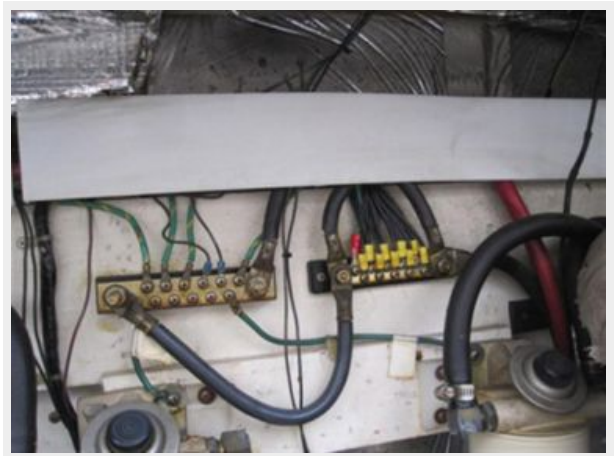


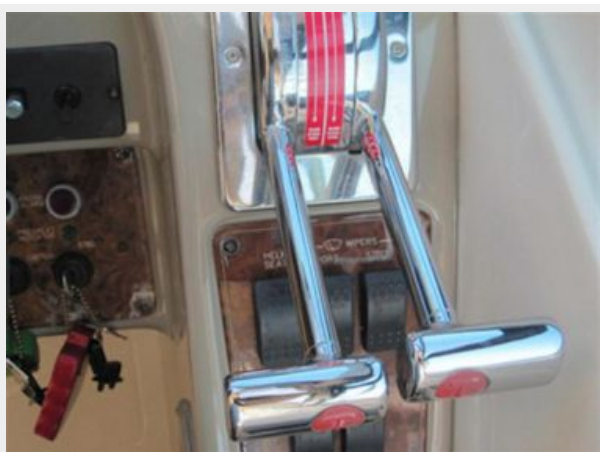




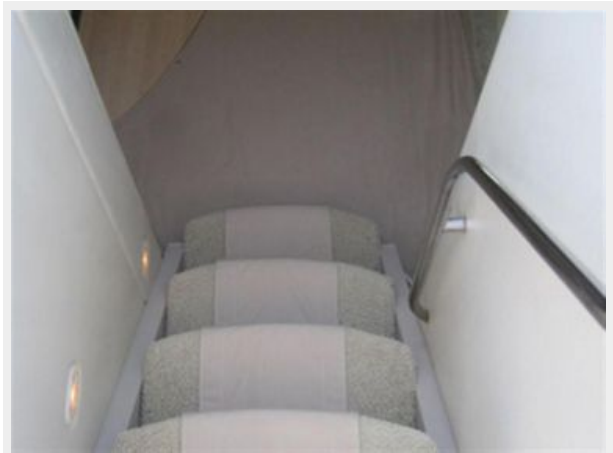












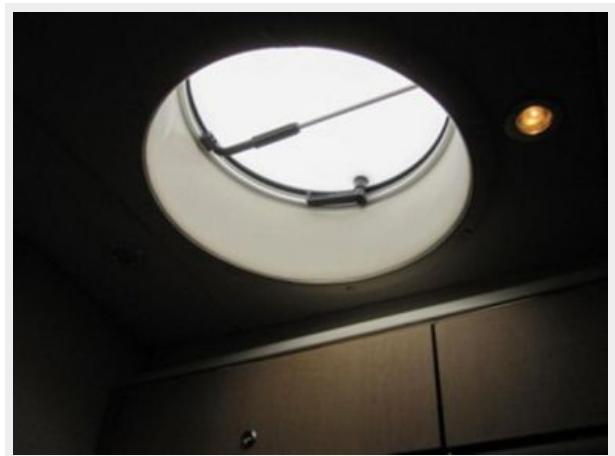
















# CONTACTS

---

Andrey Shestakov, leading yacht broker of the sales department of Shestakov Yacht Sales Inc. Shestakov Yacht Sales Inc., the official representative of the Miami/Fort Lauderdale FL headquarters.

## Contact details

---

Email: [andrey@shestakovyachtsales.com](mailto:andrey@shestakovyachtsales.com)

Web: [shestakovyachtsales.com/en/](http://shestakovyachtsales.com/en/)

## Telephones

---

USA: +1(954)274-4435

## Office hours

---

Monday – Saturday: **9:00 - 21:00** EDT

Sunday: **closed**

## Address

---



Harbour Towne Marina, 850 NE 3rd St,  
STE 213, Dania, FL 33004