

SENTIENT — HATTERAS



Судостроитель: HATTERAS

Год постройки: 1981

Модель: Катер для спортивной рыбалки

Цена: **ЦЕНА ЯХТЫ ПО ЗАПРОСУ**

Местонахождение: United States

Длина общая: 55' 0" (16.76m)

Ширина: 17' 6" (5.33m)

Мин. осадка: 4' 10" (1.47m)

Крейс. скорость: 20 Kts. (23 MPH)

Макс. скорость: 23 Kts. (26 MPH)

Купить **Sentient — HATTERAS** а также выбрать подходящую вам яхту из нашего каталога яхт вам поможет опытный яхтенный брокер Андрей Шестаков. На сегодняшний день компания **Shestakov Yacht Sales Inc.** имеет большое количество яхт в собственном списке продаж, а также тесно сотрудничает со всеми крупными яхтенными производителями по всему миру.

Для того чтобы купить яхту **Sentient — HATTERAS** а также проконсультироваться по любому вопросу связанному с покупкой, продажей, чартером яхт позвоните по телефону **+7(918)465-66-44**.

ОГЛАВЛЕНИЕ

ОГЛАВЛЕНИЕ	2
ХАРАКТЕРИСТИКИ	4
Основная информация	4
Размеры	4
Скорость, вместимость и масса	4
Корпус и палуба	4
Информация о двигателе	4
ПОДРОБНОЕ ОПИСАНИЕ	5
Introduction	5
Detailed Vessel Walkthrough	5
Main Salon	5
Galley and Dinette	6
Master Stateroom and Head	7
Guest Stateroom and Head	7
Forward Stateroom and Head	7
Cockpit, Deck and Hull	7
Flybridge, Helm and Electronics	8
Electrical	9
Engine Details & Mechanical Equipment	9
Upgrades Since 2003	10
Spare Parts	12
Broker's Comments	13
Исключения	14
Отказ от ответственности	14
ФОТОГРАФИИ	15
port engine	19
stbd engine	19
КОНТАКТЫ	20

Контактная информация	20
Телефоны	20
Время работы	20
Адрес	20

ХАРАКТЕРИСТИКИ

Основная информация

Тип судна: Катер для спортивной рыбалки

Подкатегория: Convertible

Год постройки: 1981

Модельный год: 1981

Страна: United States

Кубрик: Да

Размеры

Длина общая: 55' 0" (16.76m)

Ширина: 17' 6" (5.33m)

Мин. осадка: 4' 10" (1.47m)

Скорость, вместимость и масса

Крейс. скорость: 20 Kts. (23 MPH)

Макс. скорость: 23 Kts. (26 MPH)

Водоизмещение: 70000 Pounds

Вместимость воды: 380 Gallons

Вместимость сточного бака: 320 Gallons **Объем топливного бака:** 1285 Gallons

Корпус и палуба

Материал корпуса: Fiberglass

Информация о двигателе

Двигатели: 2

Производитель: General Motors

Модель: 12V71TI

Тип двигателя: I/O

Тип топлива: Diesel

ПОДРОБНОЕ ОПИСАНИЕ

Introduction

SENTIENT is a fine 55' Hatteras that will be a pleasure to own and operate. Powered with dependable low hour 12V71 TI Detroit's with Twin disk transmissions she will cruise effortlessly at 19-20 knots. Two 20KW Onan generators provide plenty of power while on extended trips for all on board. She has the preferred Galley up layout with large windows surrounding this area that offers a very open feeling while aboard. Her interior is bright with rich woods that complement the décor and Corian galley tops. Three nice staterooms each with their own head and shower are to accommodate guest and crew. She also is free of odors and foul smells found on many yachts. Boasting a 158 Square foot cockpit with control station she is ready to take on any big game fish, or just cruise. The fly bridge is huge and has great L-shape seating forward of the helm and a port side lounge seat. At the helm are two helm seats. A well laid out helm, over the helm is the electronic box. "See features for electronics." The half tower is in great condition and the Isinglass was just installed. "Sentient" has been very well maintained by her knowledgeable owner with an open check book and it shows. "See Upgrades section" She is seriously for sale and a must to see if you are looking for a turnkey time proven performer.

Detailed Vessel Walkthrough

Beginning forward is the first guest/captain stateroom with upper and lower berths to starboard and a private head with shower. Next aft and to port are the washer and dryer. Continuing aft to port is a second guest stateroom with upper lower berths, drawer and hanging storage, and private head with separate stall shower. To starboard is the master stateroom with centerline queen berth and ample drawer and hanging storage. There is a large master head with separate shower stall. Going aft and up the stairs, is the Salon which features a U-shape galley with all the amenities of home to the forward starboard side and a dinette that seat's 4 or converts to sleep two to portside. Next aft to port is a work station with chair. Across the salon to the starboard side are a Hi Lo table and an L-shaped sofa which has abundant storage below. The interior fabrics are fresh and in very good condition. Out the door and down is the expansive cockpit. A ladder to starboard leads to the flybridge.

Main Salon

The interior of this classic Hargrave design has all the comforts of home and is in very good condition. Plenty of natural light from the large windows highlights the color scheme throughout. A comfortable L-shaped couch made of faux leather and a table is to starboard. To port is a work station with desk and chair. The galley is also forward, and acts as an extension of the salon.

- Air-conditioning and Heat
- 12V lighting
- 110V lighting
- Electrical panels

Entertainment

- Stereo – Pioneer - DEH-P4350
- Amplifier – Pioneer - GM-6200F
- 12 CD disc changer - Pioneer - CDX-P1280
- Speaker control system – Russound - Pro-8
- Television – Westinghouse - LTV-19W6
- BrokSonic - CTSGT8118T
- Digital/analog TV converter - Digital stream - DTX9900

Galley and Dinette

The galley is found forward of the salon to starboard and is truly an extension of this space as each room is visible from the other. To port is a dinette that seats four. This area is an ideal spot to eat the day's catch or plan the next day's excursion. Corian counters simplify food preparation and complement the warm teak cabinets found throughout. Professional style appliances include a full-sized Frigidaire refrigerator and freezer. A Scotsman DCE33 icemaker, Panasonic microwave/convection oven and a 4 burner flat stove top. A double stainless steel sink acts as a helpful tool for chefs along with a 20-gallon 120V AC hot water system.

- Hot and cold pressure water
- Plenty of storage
- 12V lighting

Master Stateroom and Head

Forward and down a short flight of stairs directly to starboard is the master stateroom. This is the largest stateroom featuring a centerline queen berth, hanging closets and an en suite head. Storage is also found in drawers beneath the bed and sliding cabinets on the starboard panel. Forward to port are drawers and a small hallway is lined with hanging closets leading to the en suite head. This head is spacious and has a vanity. Frosted glass door opens to the full shower. Other features include an A/C reverse cycle unit with temperature controls, and a 13" television for entertainment. This stateroom has an opening hatch and is nicely appointed and extremely welcoming.

Guest Stateroom and Head

Across from the master stateroom is the first guest stateroom featuring over/under bunks. The thoughtful design of this room takes advantage of every nook and cranny with such features as storage drawers built into the base of the lower bunk. There is also a small nightstand next to the beds and a chest of drawers forward. One of the most notable features about this boat is that each stateroom has its own private head. A small hallway leads to the en suite head, which can also be accessed from the main foyer for use as a day head. A small vanity, sink, mirrored medicine cabinets, full shower and toilet make this head very usable. Your guests will be very comfortable in this space.

Forward Stateroom and Head

Some owners have used the forward stateroom for guest or as a captain's quarter. This room also features over/under bunks, storage drawers and an en suite head. Each stateroom also features an overhead hatch both for effect and practical reasons. The en suite head is highly usable with a hand held shower, vanity with sink and toilet. Entering this space to port is a stackable laundry center kept concealed behind teak doors. Whether used for guests or crew, this stateroom is a wonderful attribute to this boat.

- Whirlpool front loading washer
- Whirlpool 240 V front loading dryer

Cockpit, Deck and Hull

The expansive cockpit was truly designed for the serious angler. Facing aft and centered is a fighting chair with a footrest. The chair has a removable back and the additional rocket launcher piece can be added. Forward a tackle center provides plenty of storage and a bait freezer keeps your stock fresh. Aft is a custom fish box with Tuna tubes. Other fishing gear includes twelve flush mount fishing rod holders and a salt water wash down. A steering station and cockpit controls add yet another convenience when fishing at sea. A ladder to starboard provides access to the fly bridge, while a door to port leads into the main deck salon. The wide side decks are also accessed from here that lead to the bow where the tender is stored.

Dinghy - Triumph 12ft ~ ~ Engine - Suzuki 15hp Motor

- Down riggers (2) – Cannon - Uni-troll 10
- Vertical Windlass – Galleymaid - 32 volt
- Davit w/controls
- Murray Fighting Chair w/rocket launcher, ladder back, foot rest, cushions
- Triple spreader Outriggers
- Lines and fenders
- 50 AMP Power cable
- Electrical connectors
- Fresh water hook up
- Salt water wash down
- Engine room access
- 2008 Awlgrip paint

Flybridge, Helm and Electronics

Up the starboard ladder from the cockpit you are on the Bridge deck. This area is the center of command and provides 360-degree views. The fly bridge is shaded and protected with a soft top and three sided enclosure. Extending from the fly bridge aft is a white canvas cover providing shade over the cockpit. The helm station is comprised of professional equipment; and two helm chairs both with footrests. Forward, a seating area is defined by port and starboard cushioned benches for relaxing.

- Full engine instrumentation

- Morse controls
- Compass
- Glendenning Engine Synchronizer
- ACR EPIRB
- Remote spotlight
- Helm cover
- Chair covers
- Radar – Furuno - 1932
- GPS – Furuno - 1650DF
- VHF – ICOM - IC-M422
- Depth Sounder Data Marine - 3000
- Fish Finder – Furuno - LS 4100 (cockpit)
- Hummingbird (dinghy)
- Speed Log - Data Marine - 3200
- Auto Pilot – Robertson - AP300DLX

Electrical

- 12 volt, 32 volt (DC) systems
- 220 volt (AC) system
- 8 x DC batteries 2009
- 12 volt and 32 volt constavolts
- Battery charger
- Dockside electrical cables
- Battery parallel switch
- DC/AC Inverter Tripp-Lite - PV500FC (salon)
- 2 X 20KW Kohler generators
- Starboard Generator – Kohler 7880 complete service record available upon request
- Port Generator – Kohler – Model - 20ROP63 - Ser# - 90263 - 2774 complete service records available upon request

Engine Details & Mechanical Equipment

The engine room is clean and well organized. All service for engines and machinery is up to date. Please note engine maintenance records listed below.

- 2 X Detroit Diesel 12V71TI FWC Engines
- Full instrumentation Fly Bridge and engine room (mechanical)
- Emergency engine shut downs
- Fuel shut downs
- Racor fuel filters
- Glendenning Engine Synchronizer
- Automatic bilge pumps
- Bilge blowers
- CO2 system main engine room
- 8 fire extinguishers
- 5 Air conditioners 4 self contained all with digital controls (see upgrades)

Starboard Engine (Maintenance logs available)

Starboard Main - Detroit Model - LB7510 - Ser# - 12VA71743

Port Engine (Maintenance logs available)

Port Main – Detroit - Model: - 7122-3300 - Ser# - 12VA70703

Upgrades Since 2003

6/20/2003 Replaced GPS with Furuno 1650DF

10/20/2003 Rebuilt davit motor

4/22/2004 Bottom paint Micron CSC and zincs (Cable Marine Ft. Lauderdale)

8/20/2004 Replaced starboard outboard trim cylinder. Replaced all trim hoses.

5/1/2005 Awlgrip topsides (oyster)

9/20/2005 Replaced starboard inboard trim cylinder

1/12/2006 Replace A/C circulating pump

/9/2006 Bottom paint Micron CSC and zincs (Cracker Boys Ft. Pierce) Installed 1560DF transponder.

56/10/2006 Replaced microwave

8/13/2006 Repaired anchor windlass. New pads and misc parts.

12/11/2007 Replaced inside veneer solon door, outside trim and repainted w/Awlgrip oyster

4/1/2008 Awlgrip hull (below rub rail), and salon (below bridge), non-skid foredeck, gunwales and cockpit

4/15/2008 Master head. Replaced stators. Re-plumb for fresh or salt water flush.

5/2/2008 Haul out. New zincs bottom paint. Micron Ultra. Replaced fwd transponder (Furuno), Patched blisters port side behind shaft log. Bondo w/shredded glass used inside log, gorilla hair outside log. Check next haul to see which works best (3 or 4 didn't have sufficient dry time)

5/8/2008 Rebuild kit for A/C circulating pump Oberdorfer kit# 10720, impeller and seals. Plugged pin hole leak in pump housing w/ Marinetex

8/15/2008 Sat phone antenna and transceiver received back from KVH after repair. Working now, but falls off satellite after each call. 5 minutes to re-acquire satellite prior to next call.

2/1/2009 Re-upholstered solon coach and dinette seats

9/26/2008 Replaces salon starboard A/C evaporator blower

3/15/2009 Replaced master stateroom A/C with new self contained A/C from Ocean Breeze, Stuart Fl

5/1/2009 Replaced port stateroom A/Cs with new self contained units from Ocean Breeze, Stuart Fl

5/14/2009 Engine room CO2 inspected by Cintas (Devin 772-260-4091)

5/15/2009 Haul out. New zincs Bottom painted w/Trinidad. Replaced props with reconditioned spares (now 31X31 cupped). Prop speed on all running gear, rudders and props. New clamps in trim tab hoses. Insurance survey.

6/5/2009 Repaired salon A/C compressor electrical

7/1/2009 Modified center condensate bilge float control to serve as high-on, low-off control. Added extra high level float switch and latching relay control box to avoid frequent short bursts of pump operation. Center bilge now on at high water and stays on until low water.

6/22/2009 Replaced port stateroom A/C with self contained unit w/elect heat and digital controls

8/1/2009 Replace cockpit bimini. Weblon Coastline Plus (awning grade)

9/18/2009 Cockpit awning replaced

10/26/2009 Cockpit rear awning added

11/9/2009 Helm chair cushions recovered

11/26/2009 Long standing intermittent problem with AC pump traced to two problems. 1st problem - A/C pump replacement back in 1/2006 had thermal cut out protection that original pump did not have, and was set too low. World Wide Electric suggested going to 1/2 HP motor but it had same problem. Rewired to bypass cut out. 2nd problem - PR8X pump relay had bad 230v trigger (intermittent), replaced. Kept old 1/3 HP pump as spare. Also rewired spare to bypass thermal cut out. Replaced pump head.

11/26/2009 Replaced port bilge float switch.

12/18/2009 Helm bench cushions recovered.

2/15/2010 Removed unused wiring

4/1/2010 Replace shower sump float switch

5/1/2010 Haul out - Sandblasted hull. Repair blisters, Interprotect2000E/Trinidad SR/Prop Speed. Props tuned at Stuart Propeller 31X31C

5/7/2010 Replace galley refrigerator and icemaker

6/7/2010 Replaced bridge tower canvas. Removed KVH Sat phone. Inop and not serviceable.

8/18/2010 Replaced bridge enclosure canvas/glass

11/1/2010 A/C pump replaced with spare. Rear plate drilled to prevent heat build up after shutdown

1/13/2011 Engine room CO2 bottle removed/serviced by Preventive Fire/Safety Lake Park, FL. 561 -863-9900

2/1/2011 Replaced all head faucets

3/2/2011 Replaced bow A/C with self contained w/elect heat and digital control

4/1/2011 **Haul out. Micron 66 bottom, Prop Speed on running gear. Replaced A/C raw water seacock. **Replaced master stateroom A/C controls with digital thermostat from Ocean Breeze. **EPIRB serviced/tested (battery replaced)

Spare Parts

Genset

- Injector Pump
- Misc raw water pump parts
- Partial gasket kit
- Injectors
- Heat Exchanger end caps

Mains

- Alternator belt (2)
- Raw Water impeller

Auto Pilot

- Mother board
- Power supply board
- Control head cable

Other

- cutlass bearing
- 31 x 32C props
- port light
- misc light bulbs, fuses, etc.
- Jabsco macerator pump and spare motor
- Oberdorfer impeller kit
- Stators for Galleymaid head (in/out)

Broker's Comments

SENTIENT is truly a fine vessel that has been very well cared for and is a must to see if you are in the market for a nice 55' Hatteras Convertible. I have run this boat and have never heard such a fine sounding pair of 12V71TIs. She performed flawlessly and to my knowledge all systems are operative and in good order. She is seriously for sale so do not miss this opportunity to own such a fine yacht.

Исключения

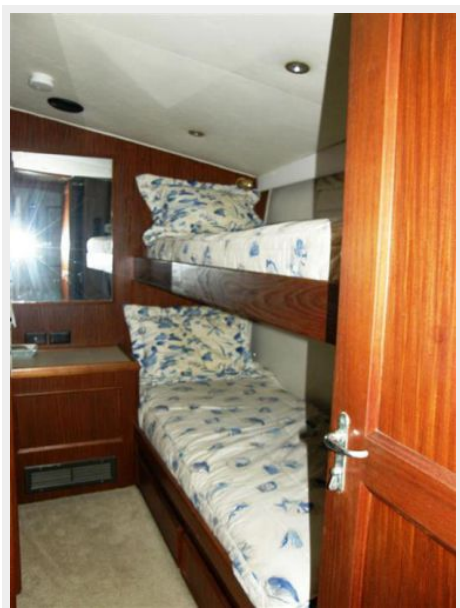
При продаже яхты исключаются личные вещи владельца.

Отказ от ответственности

Компания предоставляет описание судна или яхты добросовестно, но не может гарантировать точность этой информации, а также не ручается за техническое состояние. Покупатель должен проинструктировать своих агентов или оценщиков исследовать представленную информацию более подробно, по собственному желанию. Продажа судна или яхты, изменение цены или снятие с продажи будет происходить без предварительного уведомления.

ФОТОГРАФИИ









port engine



stbd engine



КОНТАКТЫ

Андрей Шестаков (Andrey Shestakov) – ведущий яхтенный брокер отдела продаж яхт и судов компании Shestakov Yacht Sales Inc. Официальный представитель Shestakov Yacht Sales Inc. для русскоговорящих клиентов в центральном офисе компании в Майами/Форт Лодердейл/Флорида/США.

Контактная информация

Email: andrey@shestakovyachtsales.com

Web: shestakovyachtsales.com

Телефоны

Краснодарский край: **+7(918)465-66-44**

США, Майами, Флорида: **+1(954)274-4435**

Время работы

Понедельник – Суббота: **9:00 - 21:00**
EDT

Воскресенье: **Закрето**

Адрес



Harbour Towne Marina, 850 NE 3rd St,
STE 213, Dania, FL 33004