

CALLISTA — OCEAN PACIFICO



Builder: OCEAN PACIFICO

Year Built: 2000

Model: Commercial Vessel

Price: PRICE ON APPLICATION

Location: Croatia

LOA: 124' 9" (38.00m)

Beam: 23' 0" (7.00m)

Min Draft: 9' 0" (2.75m)

Cruise Speed: 10 Kts. (12 MPH)

Max Speed: 11 Kts. (13 MPH)

Our experienced yacht broker, Andrey Shestakov, will help you choose and buy a yacht that best suits your needs **CALLISTA — OCEAN PACIFICO** from our catalogue. Presently, at Shestakov Yacht Sales Inc., we have a wide variety of yachts available on our sale's list. We also work in close contact with all the big yacht manufacturers from all over the world.

If you would like to buy a yacht **CALLISTA — OCEAN PACIFICO** or would like help answering any questions concerning purchasing, selling or chartering a yacht, please call **+1(954)274-4435**

TABLE OF CONTENTS

TABLE OF CONTENTS	2
SPECIFICATIONS	3
Overview	3
Basic Information	3
Dimensions	3
Speed, Capacities and Weight	3
Accommodations	4
Hull and Deck Information	4
Engine Information	4
DETAILED INFORMATION	5
MAIN CHARACTERISTICS	5
ACCOMMODATION	5
PROPULSION SYSTEM	5
TECHNICAL DETAILS	5
SECURITY & SAFETY EQUIPMENT	5
NAV/COM EQUIPMENT	5
TENDERS & TOYS	6
COMMENTS	6
Exclusions	6
Disclaimer	6
PHOTOS	8
CONTACTS	12
Contact details	12
Telephones	12
Office hours	12
Address	12

SPECIFICATIONS

Overview

Excellent Value for Money! This recently refitted luxurious Diana Yacht Design is in her best condition ever. Built to the world's finest standards with a spacious interior layout and stylish craftsmanship. • Turnkey condition • Recently refitted • Excellent charter record & great reputation • Classification: Lloyd's +100 A1 YACHT • Spacious interior layout • Each cabin equipped with a flat screen to access movie and music database • Swim platform provides easy access for swimming and water sports • Large selection of watersport equipment • Jacuzzi • Wi-Fi

Basic Information

Category: Commercial Vessel

Model Year: 2000

Year Built: 2000

Refit Year: 2011

Country: Croatia

Cockpit: Yes

Dimensions

LOA: 124' 9" (38.00m)

Beam: 23' 0" (7.00m)

Min Draft: 9' 0" (2.75m)

Speed, Capacities and Weight

Cruise Speed: 10 Kts. (12 MPH)

Max Speed: 11 Kts. (13 MPH)

Max Speed Range: 4400 Kts.

Gross Tonnage: 272 Pounds

Water Capacity: 2097.52609288 Gallons

Fuel Capacity: 15369.52998536 Gallons

Fuel Consumption: 42.26752832 Gallons

Accommodations

Total Cabins: 5

Sleeps: 10

Crew Sleeps: 7

Hull and Deck Information

Hull Material: Steel

Deck Material: Teak

Hull Configuration: Full Displacement

Exterior Designer: Diana Yacht Design

Interior Designer: Diana Yacht Design

Engine Information

Engines: 2

Manufacturer: Caterpillar

Model: V12 3412 DITA

Engine Type: Inboard

Fuel Type: Diesel

DETAILED INFORMATION

MAIN CHARACTERISTICS

Hull Material: Steel Hull Configuration: Displacement Builder: Ocean Pacifico Services Naval Architect: Diana Yacht Design Int.BV Designer: Diana Yacht Design Int.BV Gross Tonnage: 272 tons Net Tonnage: 81 tons Classification: Lloyd's +100 A1 YACHT Fuel Consumption: 160 l/h Maximum Speed: 11 knots Range: 4,400 nm Fuel capacity: 58,180 l (15,369 US gal) Fresh water: 7,940 l (2,097 US gal)

ACCOMMODATION

Number of cabins: 5 Configuration: 4 Double + 1 Twin cabin Bed configuration: 1 King, 3 Queen, 2 Single Guests sleeping: 10 Guests cruising: 10

PROPULSION SYSTEM

Main engines: 2 x Caterpillar V12 3412 DITA Complete rebuilt to zero hours in 2009 Engine hours (30.6.2014): 4042 h (Port) 4016 h (Starboard) Generators: 2 x Caterpillar 3304B Generator hours (30.6.2014): 13075 (Port) 12145 (Starboard) Maximum power: 2 x 456 kW Gearbox: 2 x Reintjes WAF 340 Ratio 2.963 to 1 Engine control: Triple station Glendinning electronic Steering gear: Tenfjord type twin Rudder Shafts: 4 x 8m 90mm diameter stainless steel Propellers: Michigan H4500-0-90 5 blade, handed 44.3" x 41.7" Power: 2 x 85 kW Bow thruster: Vosper (VT40) 37.5 kW variable Stabilizer (cruising): Vosper Wave Beta 3

TECHNICAL DETAILS

Fresh water maker: Idromar MC5 Duplex 250 liters/h Hot water boiler: 1 x 300 liters (79,25 UsU gal) Sewage treatment: Hamann HL-Cont type II Fuel filter separator: Alfa laval 720 l/hr Air-conditioning: Manrico Francesconi with Carlyle compressors and Alfa lava condensers Airhorn: Kahlenberg Bros. Co. Search light: 2x ITT Jabsco Anchor winch: 2x Muir V10,000/135/14 Anchor: 2x 187kg HHP galvanized Anchor chain: 2x 120M x 20.5mm galvanized Mooring capstan: 2x Muir VC7/7000/130 Passarelle: Cramm stainless steel hydraulic operated

SECURITY & SAFETY EQUIPMENT

Life rafts: 2x Viking 10DK+ for 10 persons Life jackets: 22 Lifebuoy: 4 Medical kit: 1 category A Pyrotechnics: 6 EPIRB: 1 Radar transponder: 1

NAV/COM EQUIPMENT

Radar: 1x Furuno FAR-28x7 integrated NAVnet VX2 1x Furuno 1824C-BB integrated NAVnet VX2 GPS: Leica MX 412 Navigator GPS: Furuno 320B integrated NAVnet VX2 Chart Plotter: Furuno GD-1920-C-BB integrated NAVnet VX2 Depth Sounder: Furuno FCV-292 Wind speed/direction: KVH Quadro Gyro compass: KVH digital DGS 3 24V with two wing repeaters Autopilot: Simrad AP50 Magnetic compass: C.Plath Venus Inmarsat C: Trimble Fleet 77: Thrane&Thrane VHF/DSC: Furuno FM-8500 VHF: Icom IC-M710 VHF: IC-M127 VHF: 4x portable Icom IC-M71 MF/HF: IC-M710 CCTV: Elbex Loudhailer: Raytheon RAY430 PABX: Panasonic KX-F1010 Communication: • VSAT broadband internet 512 KB/s download • SEATEL Satellite TV with UK Sky

TENDERS & TOYS

TENDER: Novurania 550DL RIB with Yamaha F100-DETL 4-stroke engine WAVERUNNERS: • Yamaha VX 110 Sport 3-seat • Sea-Doo Spark 2 UP cc 900, HP 90, 2-seat with reverse WATERTOYS: • Banana 3-seat • Donut • Snorkelling gear for adults and children • Diving gear • Wetsuits for adults and children • Waterskis & wakeboard for adults and children

COMMENTS

This stylish Diana Yacht Design, built to the world's finest standards with a spacious interior layout and stylish craftsmanship provides for contemporary entertainment with luxurious and comfortable accommodation for ten guests. The yacht presents a warm, serene quality with contemporary refinement, functionally designed for maximum pleasure and quality of life. Her freshly appointed furnishings in light grey, cream and white tones create a relaxed, airy and inviting ambiance complimenting the light wood interior throughout. The Owner's suite, with private access from the main deck is luxurious and comfortable. There are four more cabins: three VIP (queen size beds) and one twin (king size single beds) are located on the lower deck. All are en suite with fully marbled bathrooms. Each cabin is equipped with a flat screen to access movie and music database. The sundeck is fitted with a new Jacuzzi, private shower and a huge sun bed. Aft main deck has a large exterior dining area for ten guests. Aft swim platform provides easy access for swimming and water sports. The upper lounge is inviting and impressive with double glass sliding doors opening to the boat deck and up to the sundeck providing an expansive entertainment area for all occasions.

Exclusions

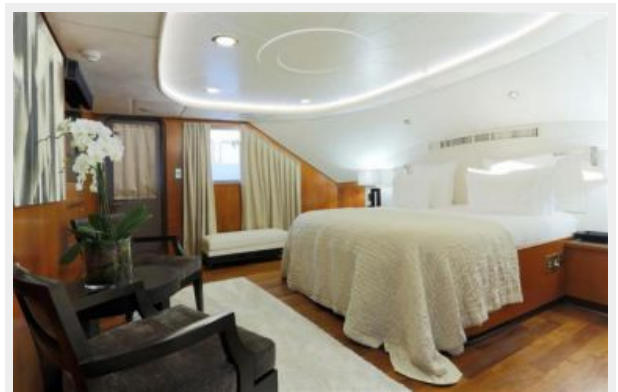
Owner's personal belongings.

Disclaimer

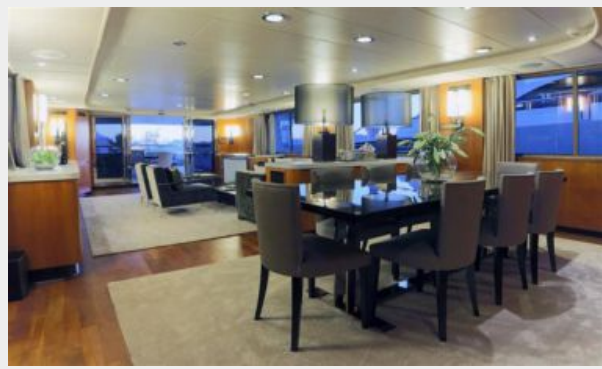
The Company offers the details of this vessel or yacht in good faith but cannot guarantee or

warrant the accuracy of this information nor warrant the condition of the vessel. A buyer should instruct his representatives, agents, or his surveyors, to investigate such details as the buyer desires validated. This vessel or yacht is offered subject to prior sale, price change, or withdrawal without notice.

PHOTOS









CONTACTS

Andrey Shestakov, leading yacht broker of the sales department of Shestakov Yacht Sales Inc. Shestakov Yacht Sales Inc., the official representative of the Miami/Fort Lauderdale FL headquarters.

Contact details

Email: andrey@shestakovyachtsales.com

Web: shestakovyachtsales.com/en/

Telephones

USA: +1(954)274-4435

Office hours

Monday – Saturday: **9:00 - 21:00** EDT

Sunday: **closed**

Address



Harbour Towne Marina, 850 NE 3rd St,
STE 213, Dania, FL 33004