

TBN — CATAMARANS NEW ZEALAND



Builder: CATAMARANS NEW ZEALAND

Year Built: 1986

Model: Catamaran

Price: PRICE ON APPLICATION

Location: Tonga

LOA: 120' 0" (36.58m)

Beam: 45' 0" (13.72m)

Min Draft: 6' 0" (1.83m)

Cruise Speed: 12 Kts. (14 MPH)

Max Speed: 17 Kts. (20 MPH)

Our experienced yacht broker, Andrey Shestakov, will help you choose and buy a yacht that best suits your needs TBN — CATAMARANS NEW ZEALAND from our catalogue. Presently, at Shestakov Yacht Sales Inc., we have a wide variety of yachts available on our sale's list. We also work in close contact with all the big yacht manufacturers from all over the world.

If you would like to buy a yacht TBN — CATAMARANS NEW ZEALAND or would like help answering any questions concerning purchasing, selling or chartering a yacht, please call +1(954)274-4435

TABLE OF CONTENTS

TABLE OF CONTENTS	2
SPECIFICATIONS	3
Overview	3
Basic Information	3
Dimensions	4
Speed, Capacities and Weight	4
Accommodations	4
Hull and Deck Information	4
Engine Information	4
DETAILED INFORMATION	5
Accommodations	5
Features	5
Exclusions	5
Disclaimer	5
PHOTOS	7
New Paint from 2010 Refit	7
CONTACTS	11
Contact details	11
Telephones	11
Office hours	11
Address	11

SPECIFICATIONS

Overview

rebuilt 1998, in Australia. Refit 2010 with new addition of 40 Sq. M master cabin.

The Vessel / Yacht is a 120 feet Catamaran Yacht. She can accommodate , After hoistable platform down to the water. 11 cabins 15 m2 per cabin approximately.

1 suite 45 m2. One massage cabin..24 passengers

all with wide windows, an ocean view and a queen sized bed. The cabins include a television and DVD and a CD/radio, air conditioning, safe deposit and mini bar, a private bathroom equipped with hair dryer. She is an intimate catamaran and is fully air conditioned throughout the entire yacht. She also includes passenger decks and a tour office to help organize the excursions.

The Yacht offers all the conveniences of a large cruise ship but with considerably fewer passengers and much more intimacy. The Vessel / Yacht has been renovated in Nov., 2010 in order to better correspond to passengers and their particular needs : the main deck has been extended, an open-air Jacuzzi has been added. The Vessel also has a 40 seat air-conditioned restaurant with a panoramic view which is situated on the main deck. The Chef's international Galley is styled for ease of use in preparation of seafood specialties. The bar, guest lounge and the spa pool are located on the upper deck. The upper deck allows for an unobstructed view of the sky, stars and the surrounding sparkling turquoise lagoon and white-sand beaches.

Basic Information

Category: Catamaran

Model Year: 1986

Year Built: 1986

Refit Year: 2010

Refit Type: rebuilt 1998, in Australia. Refit 2010 with new addition of 40 Sq. M master cabin. 11 cabins 15 m2 per cabin approximately.

Country: Tonga

Cockpit: Yes

Dimensions

LOA: 120' 0" (36.58m)

Beam: 45' 0" (13.72m)

Min Draft: 6' 0" (1.83m)

Speed, Capacities and Weight

Cruise Speed: 12 Kts. (14 MPH)

Max Speed: 17 Kts. (20 MPH)

Accommodations

Total Cabins: 11

Captain Cabin: True

Hull and Deck Information

Hull Material: Aluminum

Deck Material: Teak

Hull Configuration: Multi-Hull

Hull Finish: Aluminum

Engine Information

Engines: 2

Manufacturer: Detroit Diesel

Model: 12v 92Ti

Engine Type: Inboard

Fuel Type: Diesel

DETAILED INFORMATION

Accommodations

The Vessel / Yacht is a 120 feet Catamaran Yacht. She can accommodate 11 cabins 15 m2 per cabin approximately.

1 suite 45 m2. One massage cabin..24 passengers

Features

11 cabins 15 m2 per cabin approximately.

1 suite 45 m2. One massage cabin..24 passengers

all with wide windows, an ocean view and a queen sized bed. The cabins include a television and DVD and a CD/radio, air conditioning, safe deposit and mini bar, a private bathroom equipped with hair dryer. She is an intimate catamaran and is fully air conditioned throughout the entire yacht. She also includes passenger decks and a tour office to help organize the excursions.

The Yacht offers all the conveniences of a large cruise ship but with considerably fewer passengers and much more intimacy. The Vessel / Yacht has been renovated in Nov., 2010 in order to better correspond to passengers and their particular needs : the main deck has been extended, an open-air Jacuzzi has been added. The Vessel also has a 40 seat air-conditioned restaurant with a panoramic view which is situated on the main deck. The Chef's international Galley is styled for ease of use in preparation of seafood specialties. The bar, guest lounge and the spa pool are located on the upper deck. The upper deck allows for an unobstructed view of the sky, stars and the surrounding sparkling turquoise lagoon and white-sand beaches.

Exclusions

Owner's personal belongings.

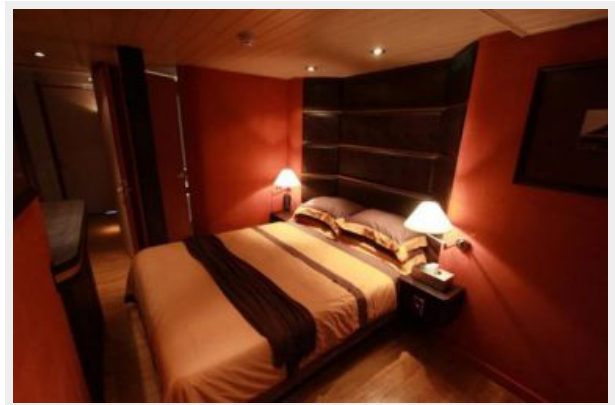
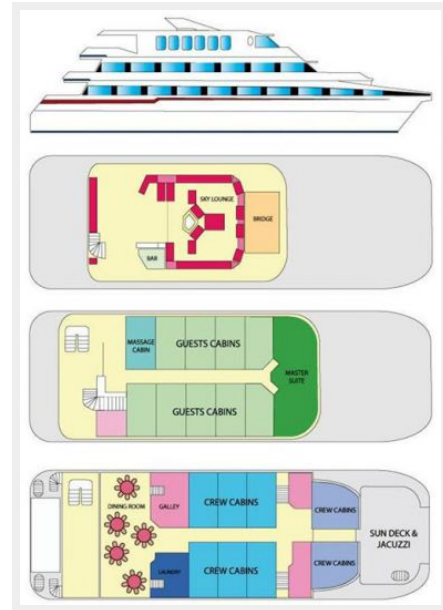
Disclaimer

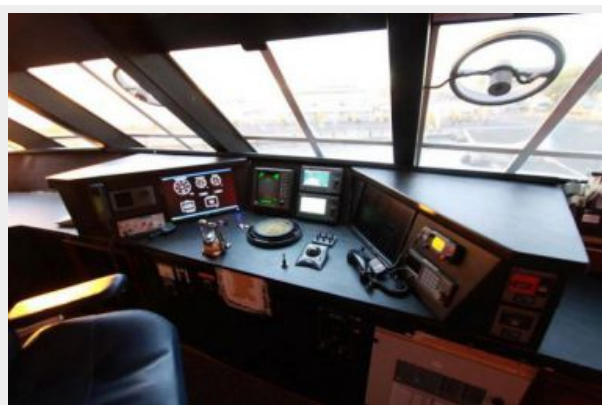
The Company offers the details of this vessel or yacht in good faith but cannot guarantee or

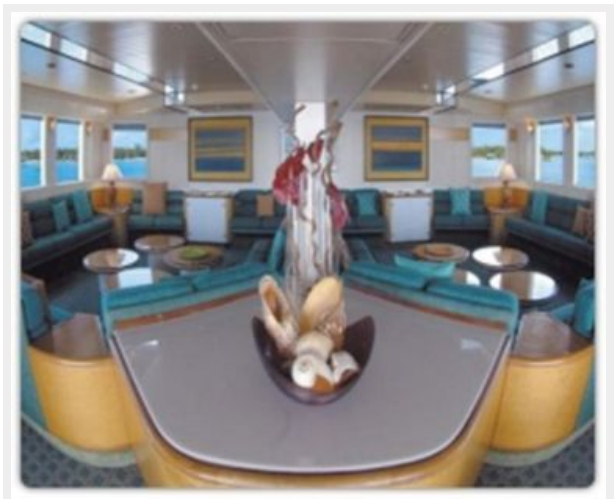
warrant the accuracy of this information nor warrant the condition of the vessel. A buyer should instruct his representatives, agents, or his surveyors, to investigate such details as the buyer desires validated. This vessel or yacht is offered subject to prior sale, price change, or withdrawal without notice.

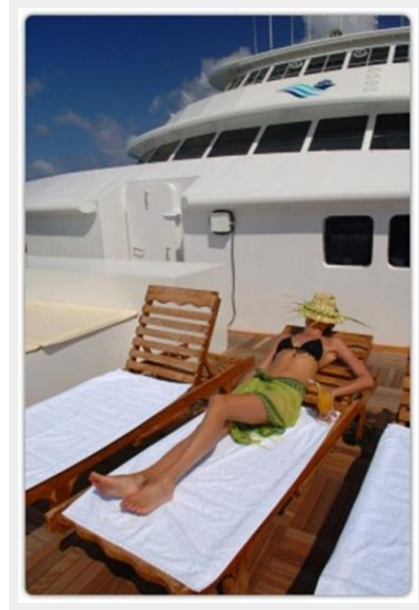
PHOTOS

New Paint from 2010 Refit









CONTACTS

Andrey Shestakov, leading yacht broker of the sales department of Shestakov Yacht Sales Inc. Shestakov Yacht Sales Inc., the official representative of the Miami/Fort Lauderdale FL headquarters.

Contact details

Email: andrey@shestakovyachtsales.com

Web: shestakovyachtsales.com/en/

Telephones

USA: +1(954)274-4435

Office hours

Monday – Saturday: **9:00 - 21:00** EDT

Sunday: **closed**

Address



Harbour Towne Marina, 850 NE 3rd St,
STE 213, Dania, FL 33004