

BLUE LADY — ROSSATO



Builder: ROSSATO

Year Built: 1992

Model: Motor Yacht

Price: PRICE ON APPLICATION

Location: Italy

LOA: 85' 0" (25.91m)

Beam: 18' 0" (5.49m)

Max Draft: 7' 0" (2.13m)

Cruise Speed: 10 Kts. (12 MPH)

Max Speed: 12 Kts. (14 MPH)

Our experienced yacht broker, Andrey Shestakov, will help you choose and buy a yacht that best suits your needs **BLUE LADY — ROSSATO** from our catalogue. Presently, at Shestakov Yacht Sales Inc., we have a wide variety of yachts available on our sale's list. We also work in close contact with all the big yacht manufacturers from all over the world.

If you would like to buy a yacht **BLUE LADY — ROSSATO** or would like help answering any questions concerning purchasing, selling or chartering a yacht, please call **+1(954)274-4435**

TABLE OF CONTENTS

TABLE OF CONTENTS	2
SPECIFICATIONS	4
Basic Information	4
Dimensions	4
Speed, Capacities and Weight	4
Accommodations	4
Hull and Deck Information	5
Engine Information	5
DETAILED INFORMATION	6
OVERVIEW	6
Accommodations	6
Engines	7
ELECTRONICS	8
Kitchen Appliances	8
Mechanical & Electrical Equipment	8
Tender	9
Navigational Equipment	9
Exclusions	9
Disclaimer	9
PHOTOS	11
Main Salon Aft	11
Master Head	11
Guest Queen	11
VIP BATH	12
Twin cabin	12
Pilothouse/Observation Lounge	12
Foredeck	13
Aft Deck	13

Sun Deck	13
Swim Platform	14
Quarter View	14
CONTACTS	15
Contact details	15
Telephones	15
Office hours	15
Address	15

SPECIFICATIONS

Basic Information

Category: Motor Yacht

Sub Category: Long Range Cruiser

Model Year: 1992

Year Built: 1992

Country: Italy

Fly Bridge: Yes

Dimensions

LOA: 85' 0" (25.91m)

Beam: 18' 0" (5.49m)

Max Draft: 7' 0" (2.13m)

Speed, Capacities and Weight

Cruise Speed: 10 Kts. (12 MPH)

Cruise Speed Range: 3500

Max Speed: 12 Kts. (14 MPH)

Displacement: 264554.7144 Pounds

Water Capacity: 528.344104 Gallons

Holding Tank: 237.7548468 Gallons

Fuel Capacity: 5547.613092 Gallons

Fuel Consumption: 15.85032312 Gallons

Accommodations

Total Cabins: 4

Total Berths: 9

Sleeps: 9

Total Heads: 4

Captain Cabin: True

Crew Cabin: 2

Crew Berths: 4

Crew Sleeps: 4

Crew Heads: 2

Hull and Deck Information

Hull Material: Steel

Deck Material: Teak

Hull Configuration: Displacement w/
Bulbous Bow

Hull Color: blue

Hull Finish: Steel

Engine Information

Engines: 2

Manufacturer: Caterpillar

Model: 3208

Engine Type: Inboard

Fuel Type: Diesel

DETAILED INFORMATION

OVERVIEW

BLUE LADY was built by the Rossato Shipyard in Venice, Italy in 1992. Known for building seakindly ferries and ships, BLUE LADY is of very robust and fair steel construction. She has been constantly maintained and upgraded by a professional crew. BLUE LADY's refined hand rubbed flamed mahogany interior includes 4 staterooms with the Master and VIP essentially making two Master suites. The flushed deck configuration provides an open and airy living arrangement on the Main Deck with full proper walk around teak decks. The Fly Bridge also benefits from the flush deck layout which has lovely shade and sun options.

The Caterpillar power plant is miserly, with approximately (16 gal/60 liters per hour) consumption at cruising speed, including generator, allowing a 3500 nautical mile cruising range. The navy blue hull is fair and shines with a generously flared bow and dual anchoring system. Below the water line she has a full displacement body and Bulbous bow.

BLUE LADY has excellent qualities of luxury, comfort and robust long range cruising and she is seriously for sale.

Accommodations

This flush deck, displacement motor yacht with bulbous bow has 4 guest staterooms below decks. The master cabin is full width with a large head clad with marble counters, shower, gold fixtures and separate wardrobe. The spacious VIP cabin is fully aft and private, separated from the rest of the boat with it's own entrance also with a large head with marble counter top, gold fixtures & shower. The comfortable queen guest cabin has an en-suite heads with Marble counter, gold fixtures and shower. The twin cabin has an ensuite head with a 3rd pullman berth. The crew quarters forward have two cabins, four beds and two bathrooms. The access to the crew accommodations is through a seperate hatch on the bow sector. This is also the access for the chain locker and the bowthruster. The bowthruster has been installed in 2008 it is a 25 kw electrical 400 volt and is supported by the main powerplant through a very sophisticated control.

The main deck interior, starting aft, has an entrance from the aft deck to the main salon. Immediately to port is a stair well to the VIP cabin. Forward are 2 lounge chairs and settee to port. The coffee table at center lifts for dining for 8. To starboard is a banquet of drawers. On the forward bulkhead is a an entertainment system that includes a Sony Bravia LCD 55" new in 2010. To starboard of the entertainment center are stairs up to the fly bridge and down to the

accommodations.

The galley is on the main deck to port with its own entrance from the main deck; separate from guests with ample counter space.

All the way forward on the main deck is the Pilot House and observation lounge. The pilot house has excellent visibility and a water tight door on to the starboard main deck.

Exterior spaces

Both the full walk around main deck and bridge decks are teak covered and in good condition. Teak decks renewed 2010 15mm average thickness. The swim platform is built in with a teak liner and stainless steel water access ladder. The aft deck is generous for a yacht of this size with alfresco dining for 6; steps to the bridge deck; seating and storage aft. The Engine Room is accessed from the starboard deck water tight door. The foredeck has a settee forward; ground tackle and ample hose pipes.

The Bridge Deck is accessed by the aft deck stairs or internal stairs. The Fly Bridge steering station is forward with a double helm settee. Aft of the mast is a large bimini with stainless steel frame covering for alfresco dining/settee. Next aft is a sun pad with cushions. All the way aft on the boat deck is the tender with a crane.

Engines

CATERPILLAR 3208 240 HP

The engines are in a good condition; this winter the injection pumps have been overhauled, and the turbo serviced. The compression test and the oil chemical analysis shows the good condition of the engines.

ONAN 25 KW

ONAN 12 Kw

KOHLER 6,5 Kw 2008

Inverter 3 KV/A

ELECTRONICS

FURUNO Radar 48 miles RAYMARINE ST70 (New 2011) autopilot JRC FF50 Fishfinder SAILOR VHF LORENZ 15" GPS- Chart plotter ULTRAFLEX Power C electronic throttle (two stations) TESSARI electronic engine control Garmin fishfinder on the FLY BRIDGE Lorenz 7" GPS Chart plotter (new 2011) on the fly bridge

Satallite TV EVAC with 3 interior stations

Kitchen Appliances

AEG magnetic inductive kitchen Ariston Hot Point oven MIELE dishwasher ARISTON wash machine REX dryer DeLonghi Microwave Owen DeLonghi Grill Custom made freezer and frigidaire

Mechanical & Electrical Equipment

Najad hydraulic side roll control system

Six separate main diesel tank with a 400AC pump for transfer

Alfa- Laval 400AC diesel separator feeding a 500 liters daily tank from the main diesel tanks

Main A.C. central system in the engine room with two compressors (10 KW)

Water maker Bitek 200 liters per hour. Renewed 2011

3 KW 24DC to 220 AC inverter on the services batteries bench, for a quiet night

3 separate electronic automatic battery chargersd for the batteries of the engines, of the power plants and of the services.

3 power plant groups 25 KW 400AC, 12KW 400AC and 6,5 KW 220AC, the last one automatically working to recharge batteries when the inverter is used complete system of

pumping of fresh water with independent pumps at 24 DC and at 220 AC for the feeding of all faucets of the boat, and double 24DC pump for the toilets (that can be feeded also with salt water).

Complete system of bilge pumping at 400Ac volt , driven from the starboard engine, and triple 24 DC.

Two main pumps have suction points in 10 different points of the yacht. the 400Ac and the engine driven pump has also the function on chain washing and fire extinguishing, with three separate exit, one in the engine room and two on the deck (bow and aft)

Main CO2 fire extinguishing system with two bottles of 27 liters and five diffusers in the engine room with the possibility to close the ventilation of engine room from outside. two anchors of 300 pounds each, with 110 meters of chain each and a 3KW windlass with double winslet and winch on the top.

Tender

Novamarine 4.30 meter 14' not inflatable with Yamaha 40 HP 4 stroke, absolutely strong and reliable, quite heavy to face rough sea with six people on board. Can pull skier with 3 people on board.

Navigational Equipment

Two plotters, double deep finder, radar FURUNO, brand new autopilot

Raymarine ST70 Plus double station, etc

Exclusions

Owner's personal belongings.

Disclaimer

The Company offers the details of this vessel or yacht in good faith but cannot guarantee or warrant the accuracy of this information nor warrant the condition of the vessel. A buyer should instruct his representatives, agents, or his surveyors, to investigate such details as the buyer

desires validated. This vessel or yacht is offered subject to prior sale, price change, or withdrawal without notice.

PHOTOS

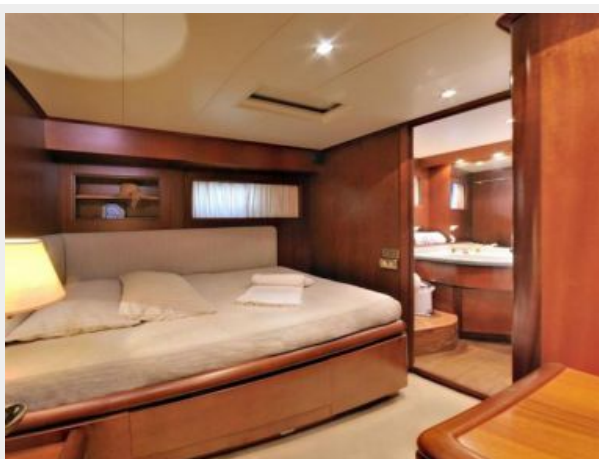
Main Salon Aft



Master Head



Guest Queen



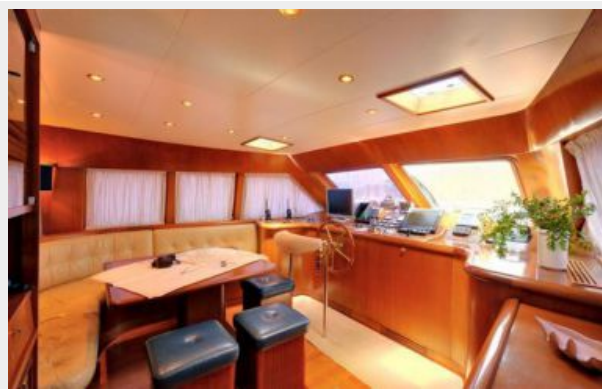
VIP BATH



Twin cabin



Pilothouse/Observation Lounge



Foredeck



Aft Deck



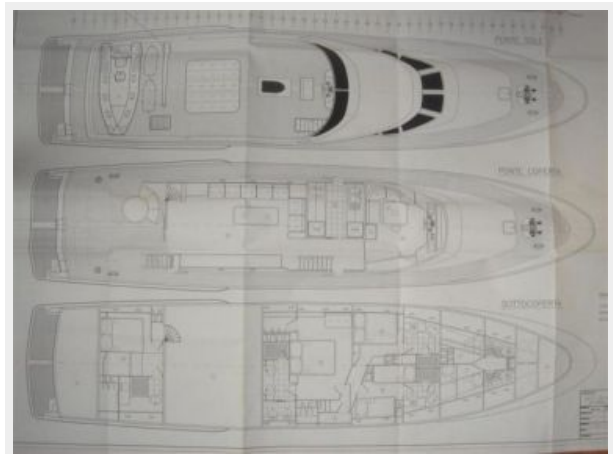
Sun Deck



Swim Platform



Quarter View



CONTACTS

Andrey Shestakov, leading yacht broker of the sales department of Shestakov Yacht Sales Inc. Shestakov Yacht Sales Inc., the official representative of the Miami/Fort Lauderdale FL headquarters.

Contact details

Email: andrey@shestakovyachtsales.com

Web: shestakovyachtsales.com/en/

Telephones

USA: +1(954)274-4435

Office hours

Monday – Saturday: **9:00 - 21:00** EDT

Sunday: **closed**

Address



Harbour Towne Marina, 850 NE 3rd St,
STE 213, Dania, FL 33004