

WASSAIL — NAJAD



Builder: NAJAD

Year Built: 2006

Model: Cruising Sailboat

Price: PRICE ON APPLICATION

Location: United States

LOA: 44' 3" (13.49m)

Beam: 15' 4" (4.67m)

Max Draft: 6' 8" (2.03m)

Our experienced yacht broker, Andrey Shestakov, will help you choose and buy a yacht that best suits your needs **WASSAIL — NAJAD** from our catalogue. Presently, at Shestakov Yacht Sales Inc., we have a wide variety of yachts available on our sale's list. We also work in close contact with all the big yacht manufacturers from all over the world.

If you would like to buy a yacht **WASSAIL — NAJAD** or would like help answering any questions concerning purchasing, selling or chartering a yacht, please call **+1(954)274-4435**

TABLE OF CONTENTS

TABLE OF CONTENTS	2
SPECIFICATIONS	3
Overview	3
Basic Information	3
Dimensions	3
Speed, Capacities and Weight	3
Accommodations	3
Hull and Deck Information	3
Engine Information	4
DETAILED INFORMATION	5
SPECIFICATION	5
Exclusions	11
Disclaimer	11
PHOTOS	12
CONTACTS	13
Contact details	13
Telephones	13
Office hours	13
Address	13

SPECIFICATIONS

Overview

Beautiful fast najad center cockpit cruiser with furling boom, air conditioning , watermaker and generator, plus much more.

Basic Information

Category: Cruising Sailboat

Model Year: 2006

Year Built: 2006

Country: United States

Dimensions

LOA: 44' 3" (13.49m)

LWL: 39' 7" (12.06m)

Beam: 15' 4" (4.67m)

Max Draft: 6' 8" (2.03m)

Speed, Capacities and Weight

Water Capacity: 166.956736864 Gallons

Holding Tank: 44.380904736 Gallons

Fuel Capacity: 134.463574468 Gallons

Accommodations

Total Cabins: 2

Total Berths: 4

Total Heads: 2

Hull and Deck Information

Hull Material: GRP

Deck Material: Teak

Hull Designer: Judel/Vrolijk

Engine Information

Engines: 1

Manufacturer: Volvo Penta

Model: D2-75

Engine Type: Inboard

Fuel Type: Diesel

DETAILED INFORMATION

SPECIFICATION

RCD Status: The yacht conforms with the essential safety requirements of Directive 94/25EC (Recreational Craft Directive) and is categorised A – “Ocean” (or Cat B – whichever is appropriate)

Description/Condition

Beautiful fast najad center cockpit cruiser with furling boom, air conditioning , watermaker and generator, plus much more. En Route Newport.

Overview

Wassail was built for the current owners and much care went into the spec and build process with a view of being a fast offshore capable cruising boat to stay on for extended periods primarily in the summer months.

Delivered in 2006, she cruised that summer in Norway, and then returned to najad for winter storage in najad's heated storage building.

In 2007 She sailed through the Gota canal to Stockholm, and then cruised the Gulf of Bothnia, and then winter stored in Finland.

In 2008, she sailed to Spain, and wintered there, and then did the ARC in the fall of 2009. The summer of 2010 was spent ashore in Puerto Rico, and then after family sailing during the winter of 2010/11 in the Caribbean, she has just sailed North to Rhode Island.

Wassail is beautifully equipped and is ready for her next adventures!

Hull and Deck

The fast hull design has a long waterline, narrow entry and contemporary near vertical bow for excellent speed and handling. Spade rudder, and a fin and bulb keel with cast iron fin/ lead bulb.

The hull and deck are cored with Divynicell, and the deck has a 1/2 inch teak overlay. najad white gelcoat with a lighter (fire engine) red than the standard stripe color.

- Lifeline gates
- Aluminum windscreen with opening window
- High gloss varnish on exterior woodwork behind windscreen
- Shower at swim platform
- Cockpit speakers
- Lightning protection
- Stainless steel protection at cleats
- Remote control for anchor in cockpit
- Chain counter for windlass
- 40 m 10mm chain
- Delta anchor
- Grabrails outside windscreen
- Sprayhood extension (cockpit tent)
- Diesel heat outlet in the cockpit
- Leather covered handrail for dodger
- Teak glass holder in cockpit
- Benzenzoni retractable davits
- Outboard motor pad on sternrail
- Spring cleats midships: 2
- Bow and stern mooring cleats : 4.
- Stainless steel bow fitting incl. anchor roller.

- Stainless steel pulpit and pushpit.
- Life lines with stanchions.
- Teak shelf in forward anchor locker.
- Bathing ladder fitted on swimming platform.
- Genoa tracks with sheet blocks and trim lines.
- Skylights: 5.
- Dorade ventilators: 6.
- Illuminated compass.
- Navigation lights.
- Mooring lines: 4 x 15 m.
- Fenders: 6.
- Electrical windlass under deck, with Delta anchor
- Steering pedestal with stainless steel protection bar.
- Varnished teak cockpit table
- Cockpit locker.
- Aft storage lazarettes

Rig and Sail Handling

- Triple spreader Selden rig with swept back spreaders
- Leisure furl furling boom
- Hydraulic backstay and vang
- Spinnaker pole on mast
- Lightning protection on mast
- Electric Andersen 52 primaries
- Electric Andersen 40 mainsheet winch
- Removable inner forestay

- Furlex headsail furling
- Insulated backstay
- Triradial spectra UK mainsail
- Triradial spectra 105% jib
- Parachute spinnaker
- Boom light over cockpit

Electronics

- Raymarine ST290 base pack (depth, speed, multifunction display)
- Raymarine ST290 Wind
- Raymarine ST290 MOB button
- Raymarine ST290 digital remote keyboard at helm
- Raymarine ST290 Graphic display
- Raymarine E120 plotter in cockpit
- Raymarine 2KW radar
- Raymarine GPS antenna
- Raymarine ST6001 autopilot with mamba drive
- Raymarine 400G course computer (Gyro)
- NASA pro Navtex
- Icom 802 SSB
- Icom M602 dual station VHF
- CD am/fm radio with interior and exterior speakers
- 110v Microwave
- built in computer
- Flat screen display at nav station

Accommodation

Large two cabin interior with spacious Vee berth cabin forward with ensuite head and stall shower. Plenty of storage lockers and a hanging locker.

Next aft is the main saloon with a settee to port and starboard, wrapping around a large table with opening leaf that doubles the size. Lockers outboard and behind the settees.

To starboard next to the companionway is an angled Nav station, with built in computer and flat screen monitor (linked to the E120)

Opposite is the lengthways galley, with corian sinks, countertop and a water cooled fridge and freezer. Custom splash guard between galley and saloon. Custom stainless sliders in galley lockers.

Aft of this is the owners cabin with a centerline bed, and ensuite head with shower area.

The fabrics are Ultrasuede, complimenting the mahogany and wenge interior woods, plus wenge and jatoba cabin sole.

- Airconditioning in all cabins, central chiller
- Espar heat in all cabins and cockpit
- Cabin fans
- Extra rail lighting under galley cabinets
- Skysol screens and blinds in overhead hatches
- Night lights
- Electric toilet in owners cabin
- Digital safe
- Fresh water filter

- Light dimmers
- 12v and 110v outlets
- Extra port into cockpit from galley
- Custom cabinetry in forecabin
- Custom shelves in aft cabin
- File cabinet in main saloon
- Leecloths

Mechanical

- Engine: Volvo Penta D2-75 S-drive 75 h.p.
- Propeller: Volvo 4-blade folding propeller.
- Holding tank with signalling (75% full).
- Self lining rudder bearings.
- 110 volt socket outlets: 4
- Shore supply (mounted near swimming platform).
- Flush mounted main switch panel with circuit breakers to chart table .
- 24 volt electrical system.
- AGM batteries.
- Battery charger.
- Digital water and fuel tank meters.
- 12 volt socket outlets: 3.
- Electrical emergency bilge pump.
- Manual and automatic bilge pump.
- DC/AC monitoring system.
- Fire extinguishers: 4.
- Gas bottles: 2.

- Double fuel filters with change over (Racor)
- Bow thruster tunner type max power
- Fresh water filter
- 24v sea water pump for anchor/deck wash
- Panda 4kw diesel generator
- Exhaust water separator for generator exhaust
- Extra house battery 120Ah
- 2000 watt 24v inverter charger
- RR combi antenna GSM, VHF, TV, FM
- Spectra newport 300 GPD watermaker 24v
- Fuel Tanks Capacity 112 gal (509l)
- Fresh Water Tanks Capacity 139 gal (632l)
- Holding Tank Capacity 37 gal (168l)

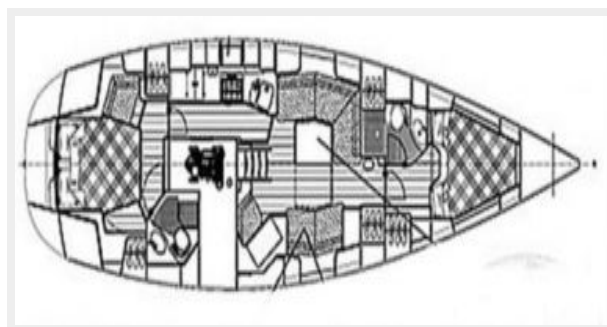
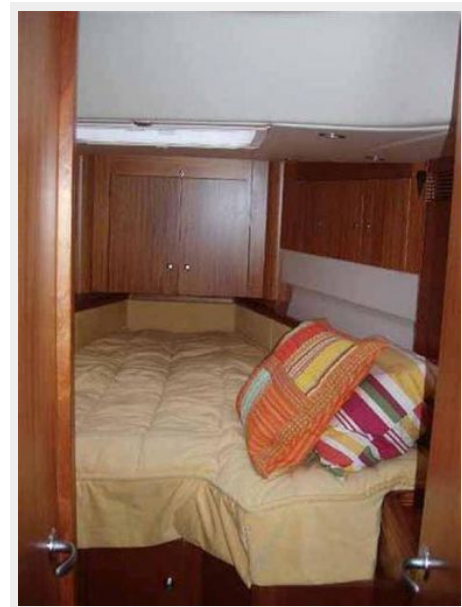
Exclusions

Owner's personal belongings.

Disclaimer

The Company offers the details of this vessel or yacht in good faith but cannot guarantee or warrant the accuracy of this information nor warrant the condition of the vessel. A buyer should instruct his representatives, agents, or his surveyors, to investigate such details as the buyer desires validated. This vessel or yacht is offered subject to prior sale, price change, or withdrawal without notice.

PHOTOS



CONTACTS

Andrey Shestakov, leading yacht broker of the sales department of Shestakov Yacht Sales Inc. Shestakov Yacht Sales Inc., the official representative of the Miami/Fort Lauderdale FL headquarters.

Contact details

Email: **andrey@shestakovyachtsales.com**

Web: shestakovyachtsales.com/en/

Telephones

USA: **+1(954)274-4435**

Office hours

Monday – Saturday: **9:00 - 21:00 EDT**

Sunday: **closed**

Address



Harbour Towne Marina, 850 NE 3rd St,
STE 213, Dania, FL 33004