

PICASSO — BROWARD



Судостроитель: BROWARD

Год постройки: 1989

Модель: Моторная яхта

Цена: **ЦЕНА ЯХТЫ ПО ЗАПРОСУ**

Местонахождение: United States

Длина общая: 92' 0" (28.04m)

Ширина: 20' 0" (6.10m)

Макс. осадка: 5' 3" (1.60m)

Крейс. скорость: 14 Kts. (16 MPH)

Макс. скорость: 18 Kts. (21 MPH)

Купить Picasso — BROWARD а также выбрать подходящую вам яхту из нашего каталога яхт вам поможет опытный яхтенный брокер Андрей Шестаков. На сегодняшний день компания Shestakov Yacht Sales Inc. имеет большое количество яхт в собственном списке продаж, а также тесно сотрудничает со всеми крупными яхтенными производителями по всему миру.

Для того чтобы купить яхту Picasso — BROWARD а также проконсультироваться по любому вопросу связанному с покупкой, продажей, чартером яхт позвоните по телефону **+7(918)465-66-44**.

ОГЛАВЛЕНИЕ

ОГЛАВЛЕНИЕ	2
ХАРАКТЕРИСТИКИ	4
Обзор	4
Основная информация	4
Размеры	4
Скорость, вместимость и масса	4
Размещение	4
Корпус и палуба	5
Информация о двигателе	5
ПОДРОБНОЕ ОПИСАНИЕ	6
Virtual Tours	6
Vessel Walkthrough	6
Galley	6
Galley Recent Updates	7
Laundry	7
Salon	8
Salon Recent Updates	8
Master Stateroom	8
Master Stateroom Recent Updates	9
Master Ensuite Head	9
Master Ensuite Head Recent Updates	9
Port Guest Stateroom	9
Starboard Guest Stateroom	10
Crew Quarters	10
Crew Quarters Recent Updates	11
Captain's Cabin	11
Flybridge	11
Aft Deck	11

Aft Deck Recent Updates	12
Electronics	12
Electrical	12
Deck and Hull	13
Deck Recent Updates	13
Mechanical Equipment	14
Companionway	14
Stairwell/Companionway	15
Wheelhouse	15
Engine Room	16
Recent Updates	16
Exclusions	17
Исключения	17
Отказ от ответственности	17
ФОТОГРАФИИ	19
КОНТАКТЫ	38
Контактная информация	38
Телефоны	38
Время работы	38
Адрес	38

ХАРАКТЕРИСТИКИ

Обзор

PICASSO is not your average Broward. She has benefited from a full interior refit including commercial grade galley, inlaid custom woodwork throughout, new soft goods & window treatments. Cosmetically on the exterior, the paint, varnish and decking is in top condition. Mechanically, she has been overhauled, and the engine room must be seen to be appreciated. She is one of the only true turn-key Browards on the market.

Основная информация

Тип судна: Моторная яхта	Подкатегория: Flybridge with Euro Transom
Модельный год: 1989	Год постройки: 1989
Год обновления: 2008	Страна: United States
Открытая палуба мостика: Да	Кубрик: Да

Размеры

Длина общая: 92' 0" (28.04m)	Ширина: 20' 0" (6.10m)
Макс. осадка: 5' 3" (1.60m)	

Скорость, вместимость и масса

Крейс. скорость: 14 Kts. (16 MPH)	Макс. скорость: 18 Kts. (21 MPH)
Вместимость воды: 750 Gallons	Объем топливного бака: 7500 Gallons

Размещение

Всего кают: 3	Каюты экипажа: 2
----------------------	-------------------------

Корпус и палуба

Материал корпуса: Aluminum

Информация о двигателе

Двигатели: 2

Производитель: Detroit Diesel

Модель: 12V92

Тип двигателя: Inboard

Тип топлива: Diesel

ПОДРОБНОЕ ОПИСАНИЕ

Virtual Tours

For **FULL VIRTUAL TOURS of each room inside & out**, see our multimedia page at yacht360tours.com/broward by clicking the "External Links" button below.

Vessel Walkthrough

Over the past 1 1/2 years, "PICASSO" has been completely updated and refurbished from a complete AwlGrip paint job (waterline up), to an entirely new custom interior. "PICASSO" is without a doubt, the most elegant customized 92' Broward afloat today. The flybridge has a spacious U-shaped lounge and a helm bench seat forward. Aft of the bench seat is a wet bar with refrigerator, ice maker and Jennair grill. There is also a custom folding radar arch and ladder leading down to the aft deck. The aft deck features an outdoor dining area with table, chairs, L-shaped seating and a small freezer. There are wide steps leading to the swim platform which has bench seats with storage underneath. The aft bulkhead has expansive windows with a large door leading into the spacious, full-width main salon. The salon is delightfully appointed in a relaxed tropical theme complete with a full wet bar, ice maker and a complete entertainment center. The separate dining area (in same decor) seats eight. Forward is the country kitchen which features a large L-shaped dinette with comfortable seating for eight. The brilliantly decorated full-width master stateroom is located amidships and has a centerline king sized bed. There are large opening portholes port and starboard, an entertainment center, walk-in closet with concealed safe, gun locker and built-in work station. This stateroom includes a TV/VCR interfaced with Maptec, engine room camera, VHF and depth and radar alarms. The ensuite his & her heads have marble countertops and are separated by a large tub with shower. Aft, to port is the VIP stateroom which features a queen sized bed and ensuite head with shower. This stateroom includes an entertainment center with TV/VCR and DVD fully interfaced and a separate stereo system. Opposite to starboard is a guest stateroom with twin lower berths and a pullman berth. The guest stateroom includes an ensuite head with shower. This stateroom features an entertainment center with TV/VCR interfaced with Maptec and engine room cameras. In the stateroom foyer area is the linen closet and full sized stacked washer/dryer. Forward is the crew quarters with an escape hatch and stacking washer/dryer. All the way forward are V-berths followed by the crew head to port and another crew cabin with double berth. The Captain's cabin is opposite also with a double berth and desk. This cabin is also equipped with a telephone system, VHF, bilge alarm, depth alarm, TV/VCR and gun locker with safe. At the end of the passageway is the door to the engine room.

NOT FOR SALE TO U.S. RESIDENTS IN WHILE IN U.S. WATERS

Galley

KitchenAid Stainless Steel Dishwasher - New 2001

Kitchen Aid Instant Hot Water - New 2004 KitchenAid Stainless Steel Trash Compactor - New 2001 Kenmore Stainless Steel Garbage Disposal

Culligan Water Filtration System Toaster Oven Frigidaire Galley Professional Series Stainless Steel Stove with Oven Frigidaire Galley Professional Series Stainless Steel Microwave GE Profile Side-by-Side Refrigerator/Freezer Sub-Zero Stainless Steel Under Counter Beverage Refrigerator Coffeemaker Sony 13" Color TV

Galley Recent Updates

GALLEY RECENT UPDATES:

- All new marble flooring and carpet
- New area lighting and chandeliers
- New window treatments (stainless)
- Electric drawer locking system
- New stainless sink
- On demand hot and cold water
- New double drawer dishwasher
- New Gagenaу grill
- Gagenaу oven and microwave systems
- Subzero refrigerator/freezer drawer system
- New electric lighting controls
- (2) Additional inches of sound proofing in galley flooring
- New wall treatments
- New headliners
- New stainless and high gloss cabinetry
- New Knotty Brazilian Alder Wood
- New lighted pantry
- New touch light storage and working space lighting
- New plumbing fixtures
- New garbage disposal
- New trash compactor
- New Gagenaу cooktops with overboard venting
- Fisher Pykel refrigerator and freezer
- Quartz countertops
- Quartz handrails
- Additional 36,000 BTU supplemental AC in galley.

Laundry

Kenmore Stacked Washer/Dryer (Owners) - New 2001 Kenmore Stacked Washer/Dryer (Crew)

Salon

Complete Entertainment Center Relaxing Tropical Theme Interior Separate Dining Area in Same Decor Full Wet Bar Ice maker

Salon Recent Updates

SALON RECENT UPDATES:

- New headliners
- New AC air handler
- New AC (wood grills)
- All new cabinetry with Birdseye maple and inlays
- Dining table bases and server Peruvian Llama with Frosted Glass Inserts
- Walls feature solid wood columns (Alder) and Bookmatched Paneling
- HD Direct TV
- Sonos Music System with Logitech 1000 remote control throughout boat
- New 24 bottle wine cooler
- All windows in entire boat were removed and replaced with new glass and retreated
- All salon lighting remote control operated or wall switch dimmer
- New halogen lighting
- New chandelier and wall sconces Anstrion Swarski on Shoenbok chandeliers
- new marble counter tops,
- Forward bulkhead Birdseye Maple with Knotty Brazillian Ebony inserts
- High/low flat screen TV 45" Sharp Aquos LCD
- New VAIO Media Center 500 movies on demand
- New carpet
- New couch with storage underneath
- New silk curtains
- UV window tinting in main salon
- New chandelier and recessed ceiling of Alder and Birdseye Maple insert
- All new furniture throughout

Master Stateroom

Centerline King Sized Bed

Entertainment Center TV/VCR Large Opening Portholes (Port & Starboard) Walk-in Closet with Concealed Safe Gun Locker Built-In Work Station

Master Stateroom Recent Updates

MASTER STATEROOM RECENT UPDATES:

- New cabinetry Alder with Birdseye Maple and Ebony inlay
- New AC controls
- Lalic glass panels back lit or side lit
- Bookmatched walls - Knotty Brazilian Alder
- New Onyx countertops
- New rope lighting
- Surround sound system
- New 42" LCD TV Vizio,
- New accent lighting
- Catalupi reading lights
- All new soft goods
- New custom mattress
- New Logitech and Sonos for music and movies

Master Ensuite Head

His & Hers Baths Marble Countertops Shower Large Bathtub

Master Ensuite Head Recent Updates

MASTER JACK & JILL HEAD RECENT UPDATES:

- Onyx countertops
- Onyx bowl sink
- Gold and crystal fixtures throughout master head and shower
- New separate AC systems in master head
- Roman Mosaic Onyx tile wall treatment and backsplash
- Marble flooring
- New Birdseye Maple cabinets
- Cedar lined closets
- New carpet
- New dimmer switches for all lighting

Port Guest Stateroom

PORT GUEST STATEROOM - RECENT UPDATES:

- New marble countertops

- New cabinetry with Birdseye and Ebony inlay
- New I-Pod docking station
- New PBX phone
- New glass in port lights
- New Catalupi reading lights
- New solid wood shated
- New wall treatment
- New headliner
- New Halogen remote lighting
- New AC control
- New mattress custom
- New blackout socks for port lights
- New 26" LCD flatscreen TV
- New magnetic door stops.

REBUILT GUEST HEAD:

- New fixtures
- New cabinetry

Starboard Guest Stateroom

STARBOARD GUEST STATEROOM - RECENT UPDATES:

- New marble countertops
- New cabinetry with Birdseye and Ebony inlay
- New I-Pod docking station
- New PBX phone
- New glass in port lights
- New Catalupi reading lights
- New solid wood shated
- New wall treatment
- New headliner
- New halogen remote lighting
- New AC control
- New mattresses custom
- New blackout socks for port lights
- New 26" LCD flatscreen TV
- New magnetic door stops

Crew Quarters

Forward V-Berths Crew Cabin with Double Berths

Crew Head to Port Escape Hatch Door to Engine Room

Forward V-Berths Crew Cabin with Double Berths Crew Head to Port Escape Hatch Door to Engine Room

Crew Quarters Recent Updates

CREW QUARTERS - RECENT UPDATES:

- All new cabinetry
- New formica
- Self closing drawers
- New mattresses
- All new fabrics and wall coverings
- Engine and tank electronic monitoring system in crew quarters
- New safe in captain's cabin
- New entertainment system
- Flat screen TV
- I-Pod docking stations
- New headliners
- New VHF
- Lighting DC & AC
- New carpet
- Heads refurbished
- Cell phones with full PBX
- New stair lighting

Captain's Cabin

Double Berth VHF Bilge Alarm Gun Locker with Safe Desk Telephone System Depth Alarm TV/VCR

Flybridge

Custom Folding Radar Arch Ladder Leading Down to Aft Deck U-Shaped Lounge Seating Helm Bench Seat Jennair Grill Refrigerator Ice maker Wet Bar

Aft Deck

L-Shaped Seating

Dining Area with Table & Chairs

Bench Seats with Storage

Wide Steps

Swim Platform

Small Freezer

Aft Deck Recent Updates

AFT DECK - RECENT UPDATES:

- New inlay teak table
- New cushions and cushion covers
- New sun deck lighting
- New teak chairs
- New staircase to boat deck
- New aft deck lighting

Electronics

Robertson AP-9 Dual Station Laser Plot Autopilot with Repeater

SEA SSB Radio with High Seas Direct, Repeater on Flybridge

KVH Satellite Television Digicourse Electronic Compass with Repeater and

Simrad Plotter Differential

Northstar GPS with Differential

2 x 72 Mile Furuno Radars with Plotters

4 x Shipmate VHF Radios

2 x Depth Sounders with Flybridge Repeater

Danforth Constellation Compass Laser Plotter

Electrical

2 x 35 KW Northern Lights Generators; Hours: 8256 Starboard, 7853 Port

2 Transformers

2 Voltage Regulators

Deck and Hull

Jennair Grill

2 Marquipt 1500 # Davits

DBC 10 Person Life Raft with EPIRB

Deck Recent Updates

TOP DECK - RECENT UPDATES:

- All flybridge instrumentation
- New radars
- New engine monitors
- New autopilot and new navigation
- New exterior entertainment lighting
- (2) New searchlights and refurbished existing searchlight
- (2) Inferred PTZ long range remote cameras on mast
- New overflow freezer
- New loud hailer system
- New raised LED letter name boards
- New speakers and entertainment system CD/FM (Sonos System)
- New 15000 Vespa Scooter with Stainless Chalks
- New passerelle Marquipt manuel
- New Venturi windshield
- New hydraulically operated sunpad
- All new exterior cushions and cover
- New mast
- All new running lights
- New towing light and control switch
- Dinghy chalk alarm (in case dinghy shifts)
- New batteries for electronics
- New ships hands free PBX
- New refrigerator and ice maker
- New fixtures on sinks
- Dinghy completely refurbished
- Honda 4-Stroke Outboard Motor
- Both davits completely rebuilt by Marquipt with new control heads with davit extension on port side
- New Bimini top

Mechanical Equipment

Village Marine 1200 GPD Watermaker with Supply Manifold

2 Station Hydraulic Windlass with Hydraulic Grand Tackle

2 x Glendinning Engine Synchronizers

35 HP Bow Thruster with Power Take Off on Port Generator

Fire Alarm and Automatic Fire System

Naiad Stabilizers

Alfa Lava Centrifuge

Kobelt Air Controls

2 x 5 Ton Marine Air Chilled Water Air Conditioning System

ZP Transmission

Companionway

STARBOARD COMPANIONWAY RECENT UPDATES:

- New marble and Mother-of-Pearl flooring in companionway
- New AC controls
- Electric door locking
- Solid Alder Birdseye Maple with inlays (companionway door)
- New Knotty Brazilian Alder wall treatment with inlays
- New wet bar with Lalique fixtures, Lapis countertops and backsplash.

PORT COMPANIONWAY RECENT UPDATES:

- New day head with Lalique fixtures
- Marble countertops
- Marble and abalony flooring
- Mother-of-Pearl wall coverings
- Birdseye Maple with Knotty Brazilian Alder accents
- All light switches electric on dimmers
- New Knotty Brazilian Alder wall treatment with inlays
- New AC controls

- All new cabinetry
- New marble and Mother-of-Pearl flooring in companionway

Stairwell/Companionway

STAIRWELL/COMPANIONWAY - RECENT UPDATES:

- Handmade vinylized wallpaper
- New step lights and carpet
- New lighting
- New wall treatments
- Marble handrails
- New headliner
- New carpet
- New doors - Alder Wood
- New water, fire & smoke alarm system throughout boat

Wheelhouse

WHEELHOUSE RECENT UPDATES:

- New teak and holly flooring
- New instrument consoles with retractable glass
- New teak (contemporary) wheel
- New headliner
- New night lighting
- Full glass bridge/cockpit
- New Ostrich seats and console
- New Knotty Brazilian Alder cabinetry with wall treatments
- Rebuilt NAID stabilizers
- (2) New ACR remote control panels
- (2) New VHF all-in-one remotes handheld
- New accessory controls
- Camera system - 9 cameras
- Nobletec/Jeppesson system
- 5 ships computers
- V-Cool window treatments in Wheelhouse
- (2) WI-FI for network - 2nd network high security fed through satellite
- Inside and outside temperature monitor system
- Xantex inverter
- Capac monitor for hull electrolysis
- Remote start/stop for watermaker
- AIS system for GPS

- Wireless remote keyboard/mouse for all navigation systems
- HD all-in-one color printer/fax
- New easy access relay panels and wire races
- Rebuilt bow thruster
- Factory refurbished Robertson AP9 autopilot
- New AC Controls
- New alternate engine genset backup VDO gauges
- Kranco Video Switching - all video sources
- (2) New GPS
- Syrens Long Range WI-FI system
- 9 Camera security system
- Complete electronics - engine, genset, tank alarm monitor system
- Complete stand alone and/or integrated Raymarine wind, temperature, speed, depth, radar
- Remote input plug for ships computers
- B-Gan for at-sea internet and phone
- Integrated portable sat phone

Engine Room

NEW UPDATES TO ENGINE ROOM:

- New or Refurbished pumps throughout AC upgraded AC chillers
- Cylinder kits done on engines
- All engines and genset certified to factory tolerances by RPM Diesel
- Repaint all surfaces
- All new hoses
- Complete painting of engine room
- (3) Inferred cameras PTZ
- Upgraded watermaker to 1800 GPD with remote start/stop
- All new engine sensors - engine, genset and tank.

FUEL BURN: 13 kts Fuel 45 GPH full load, 10 kts Fuel 30 GPH full load

Water Sports

15' Novurania MX450 with 90 HP Honda 4-Stroke

Recent Updates

GENERAL RECENT UPDATES 2008:

- New Sound Down throughout boat in walls and flooring
- All new electric recepticals and wiring

- Entire boat painted from waterline up with Awl Grip 2000 Matterhorn White
- Cat 5 Cabling throughout boat

Rebuilt Watermaker (7/2005)

New Ships Computer with NobleTech Admiral Software (7/2005)

Flybridge: New Plexi Windshield (9/2005)

2 New Freezers on Flybridge (9/2005)

New SSB Antenna (9/2005)

2 New Chilled Water Circulating Pumps (9/2005)

Completely reconditioned 17' Novurania Tender (9/2005)

New VHF Antenna (9/2005)

New 6' Antenna Extension for Weather Fax (9/2005)

Reconditioned Props (12/2005)

New Hot Water Circulating Pump (1/2006)

New Freshwater Pump (1/2006)

New 17" Flatscreen TV in VIP Stateroom

New 14" TV with DVD in Guest Stateroom

2 New 14" TVs in Crew Quarters

Exclusions

Exclusions to include but are not limited to owner's personal effects. A detailed list of exclusions will be provided at time of sale.

Исключения

При продаже яхты исключаются личные вещи владельца.

Отказ от ответственности

Компания предоставляет описание судна или яхты добросовестно, но не может гарантировать точность этой информации, а также не ручается за техническое

состояние. Покупатель должен проинструктировать своих агентов или оценщиков исследовать представленную информацию более подробно, по собственному желанию. Продажа судна или яхты, изменение цены или снятие с продажи будет происходить без предварительного уведомления.

ФОТОГРАФИИ



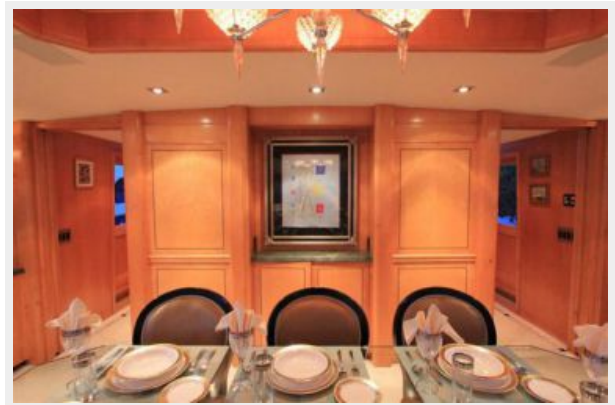
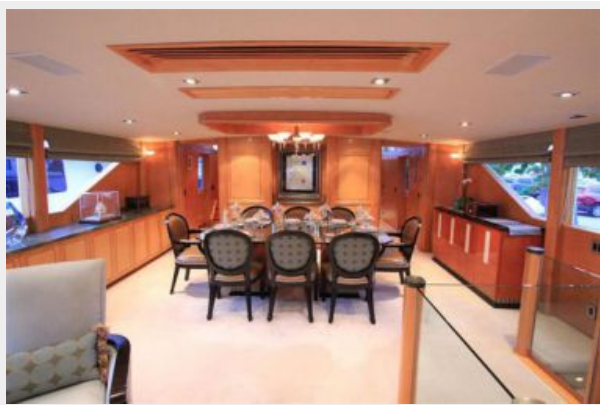




















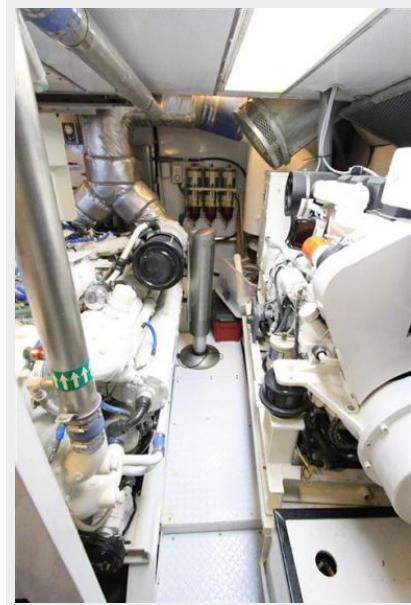
















КОНТАКТЫ

Андрей Шестаков (Andrey Shestakov) – ведущий яхтенный брокер отдела продаж яхт и судов компании Shestakov Yacht Sales Inc. Официальный представитель Shestakov Yacht Sales Inc. для русскоговорящих клиентов в центральном офисе компании в Майами/Форт Лодердейл/Флорида/США.

Контактная информация

Email: andrey@shestakovyachtsales.com

Web: shestakovyachtsales.com

Телефоны

Краснодарский край: **+7(918)465-66-44**

США, Майами, Флорида: **+1(954)274-4435**

Время работы

Понедельник – Суббота: **9:00 - 21:00**
EDT

Воскресенье: **Закрито**

Адрес



Harbour Towne Marina, 850 NE 3rd St,
STE 213, Dania, FL 33004