

ABSOLUTELY NOT — VICEM



Судостроитель: VICEM

Год постройки: 2005

Модель: Катер для спортивной рыбалки

Цена: **ЦЕНА ЯХТЫ ПО ЗАПРОСУ**

Местонахождение: United States

Длина общая: 66' 0" (20.12m)

Ширина: 20' 0" (6.10m)

Мин. осадка: 5' 6" (1.68m)

Крейс. скорость: 26 Kts. (30 MPH)

Макс. скорость: 32 Kts. (37 MPH)

Купить **ABSOLUTELY NOT — VICEM** а также выбрать подходящую вам яхту из нашего каталога яхт вам поможет опытный яхтенный брокер Андрей Шестаков. На сегодняшний день компания **Shestakov Yacht Sales Inc.** имеет большое количество яхт в собственном списке продаж, а также тесно сотрудничает со всеми крупными яхтенными производителями по всему миру.

Для того чтобы купить яхту **ABSOLUTELY NOT — VICEM** а также проконсультироваться по любому вопросу связанному с покупкой, продажей, чартером яхт позвоните по телефону **+7(918)465-66-44**.

ОГЛАВЛЕНИЕ

ОГЛАВЛЕНИЕ	2
ХАРАКТЕРИСТИКИ	4
Основная информация	4
Размеры	4
Скорость, вместимость и масса	4
Размещение	4
Корпус и палуба	5
Информация о двигателе	5
ПОДРОБНОЕ ОПИСАНИЕ	6
Accommodations	6
Salon	6
Galley and Wet Bar	6
Master Stateroom	7
Fly Bridge	8
Wheelhouse	8
Aft deck	8
Electrical System	9
Electronics	9
Deck and Cockpit	9
Engine Room and Mechanical Equipment	10
Other Features	11
Remarks	11
Recent Upgrades	11
Исключения	11
Отказ от ответственности	12
ФОТОГРАФИИ	13
Main Salon	13
Main Salon	13

Dinette	13
Galley	13
Laundry Room/Pantry	13
Galley	13
Day Head	14
Stairway	14
Master Stateroom	14
Master Stateroom	14
Master Bathroom	15
Master Stateroom	15
VIP Stateroom	15
Guest Stateroom	15
Guest Bathroom	16
Day Head	16
Pilothouse	16
Pilothouse	16
Pilothouse	16
Pilothouse	16
Pilothouse Bathroom	17
Pilothouse	17
Cockpit and Deck	17
Engine Room	17
КОНТАКТЫ	18
Контактная информация	18
Телефоны	18
Время работы	18
Адрес	18

ХАРАКТЕРИСТИКИ

Основная информация

Тип судна: Катер для спортивной рыбалки

Подкатегория: Катер для спортивной рыбалки

Модельный год: 2005

Год постройки: 2005

Страна: United States

Открытая палуба мостика: Да

Размеры

Длина общая: 66' 0" (20.12m)

Длина по ватерлинии: 60' 0" (18.29m)

Ширина: 20' 0" (6.10m)

Мин. осадка: 5' 6" (1.68m)

Скорость, вместимость и масса

Крейс. скорость: 26 Kts. (30 MPH)

Макс. скорость: 32 Kts. (37 MPH)

Вместимость воды: 400 Gallons

Вместимость сточного бака: 400 Gallons

Объем топливного бака: 2000 Gallons

Расход топлива: 80 Gallons

Размещение

Всего кают: 3

Всего коек: 1

Спальные места: 8

Всего ком. состава: 5

Койки экипажа: 1

Спальных мест экипажа: 1

Комм. состав экипажа: 1

Корпус и палуба

Материал корпуса: Cold Molded

Материал палубы: Fiberglass Sandwich

Комплектация корпуса: Modified V-Hull

Цвет корпуса: Ice Blue

Дизайнер корпуса: Vicem

Информация о двигателе

Двигатели: 2

Производитель: MAN

Тип двигателя: Inboard

Тип топлива: Diesel

ПОДРОБНОЕ ОПИСАНИЕ

Accommodations

After touring **ABSOLUTELY NOT**, it was clear that "Custom Made" is the absolute standard aboard this fine vessel. The woodwork and joinery are exquisite and the satin-finished pearwood throughout is flawless. She is newly been commissioned, gently used since launching, and is virtually better than brand new. **ABSOLUTELY NOT** features three ensuite staterooms, five heads, an open salon-galley layout plus a large laundry/pantry area. Six steps down from the main deck will allow you access to all three staterooms, and the laundry storage room. This remarkable vessel has generous headroom, even in the lower stateroom areas. Two cabins provide comfortable quarters, each with a private ensuite head and full shower enclosures. The warm pear wood and softly hued corian countertops provide an understated elegant atmosphere, accented with Euro-style fixtures. On the starboard side is an upper and lower twin cabin, with flat screened TV with built-in DVD player. The ensuite head can be accessed directly from the cabin, or from the passageway at the foot of the stairs. Forward of the twin cabin is the VIP cabin. This full-beam queen sized berth is quietly elegant and has a leather seat on either side, with lots of deep storage below the bed. A roomy hanging locker is on the starboard side and a desk/vanity occupies the equal space opposite. Overhead there is a hatch to the foredeck with built-in bug screen and black out screen, as well as LED lighting so that you can sleep under the stars no matter what the weather. Roomy is the only way to describe the bright guest head. Warm unfinished two-tone teak soles are reminiscent of a fine sailing yacht and comfortable underfoot.

Salon

Pearwood glows from all sides, encompassing the two built-in armchairs and 3-seater sofa with custom side tables. Upholstered in soft beige leather, they are invitingly comfortable and grouped around a convertible coffee table and in clear view of the flat screen TV. Duet blinds are found in the salon and adjoining wet bar area, providing soft natural lighting when desired. **Salon**

Features:

- Sliding salon door
- Pioneer 44" plasma flat TV
- (4) Samsung DirecTV receivers throughout the yacht
- Custom made solid pear wood overhead hand rail
- Custom wood and fabric shades
- Stainless steel hand bars on sides
- Salon cup and plate holders
- Leather upholstery

Galley and Wet Bar

The wet bar area is an absolute delight! The countertops have been fabricated from intriguing green marinese granite as have the galley countertops - providing a perfect foil for the pearwood joinery. The stainless steel sink, expansive wine cooler and icemaker are disguised behind carefully detailed paneling. Forward of the wet bar is a dining area reminiscent of a gentlemen's club in its understated elegance and comfort. Warm natural colors have been chosen for the seating area, and a compass rose inlaid high-low table overlooking the galley area. Glass fronted cabinetry stores glassware, convenient to access from either the wet bar or the dinette area. The galley is located on the port side of the main deck level two steps up, so a wonderful view can be had from all areas. Here the joinery work is showcased in the well placed and expansive cabinetry. Brushed stainless steel appliances provide an elegant counter balance to the classic wood. **Galley Equipment:**

- GE Monogram stainless steel side-by-side refrigerator and freezer
- GE Monogram stainless steel dishwasher
- GE Monogram stainless steel trash compactor
- GE Profile Advantium stainless steel microwave/convection oven
- Bosch 4-burner stove
- Bosch vent in galley
- Indel stainless steel ice maker
- Granite countertops
- Refrigerated stainless steel wine cooler for 20 bottles
- Genuine leather upholstery on galley dinette settee

Master Stateroom

This stateroom is nearly the full length of the vessel and is truly a relaxing retreat from the real world. Flanked by subtle wall sconces over the built in bedside cabinets, the king-sized bed occupies the central part of the stateroom. There are two drawers at the foot of the bed and the mattress lifts for additional storage below the orthopedic pillow top mattress. Overhead hatches with screens and privacy panels as well as blue LED lighting overhead provides soft lighting and creates the illusion of sleeping under the stars. The large head is forward of the sleeping area, and is finished with matchstick mahogany, pear wood walls and multi-color teak flooring. A double-size shower has an elegant teak grate underfoot, and is detailed with finely finished Euro-style fixtures. Two steps down will bring you to a private lounge/library adjoining the master cabin sleeping area. A wide, cleverly crafted molding at chair-rail height provides a uniquely understated handrail for safe maneuvering while the vessel is underway. The library has a central open shelved bookcase with glassed fronted cabinets on either side. An L-shaped sofa snuggles into this cozy alcove below the bookcases providing a private quiet space away from it all. A pearwood side table and matching console coffee table provide additional storage space accessible from every angle. There is also a writing desk with a 24" Samsung computer monitor tucked under the stairway, with repeaters for all of the bridge camera capabilities. Here too is a VHF outlet equipped with total communications just as the pilothouse and aft steering station are. A laptop computer will fit inside the desk and out of sight. An additional cedar lined

hanging closet can be found in the library area as well.

- Orthopedic mattress
- Safety handles in master head
- Samsung 22" flat LCD HDTV
- Mood lighting around beds and headliners
- Custom raw silk fabrics

Fly Bridge

- Outside driving station on flybridge
- U-Line refrigerator and icemaker combo
- (3) Stidd leather helm chairs
- Head
- Settee converts to extra berth
- Special lighting
- Sharp 22" flat Aquos TV
- Bose Lifestyle 1-2-3 system

Wheelhouse

In the wheelhouse, three oatmeal-colored leather Stidd chairs command the console. A wonderful set of chart drawers occupies the area on the starboard side, while a HD flat panel TV/DVD player fits conveniently above. A built-in banquette can seat several for a dining experience or an evening of fun and games while enjoying a bird's-eye view while surround sound adds to the ambiance. Duet blinds offer soft lighting or total privacy, and are finished with woven leather upholstery at the corners. A tidy head is conveniently located on the starboard side of the wheelhouse, with a warm teak sole and the lovely Euro-style fixtures as found throughout this yacht. A door allows you to exit the wheelhouse onto the upper aft deck for views of the action below on cushioned seating, or to utilize the outside steering station.

Aft deck

Below, the aft deck has a convenient day-head with shower on the starboard quarter. The doorway window allows one to enjoy the scenery without missing a beat, while the tinted glass provides total privacy. It is finished with pearwood and teak with the same high quality workmanship as is found throughout ABSOLUTELY NOT. The forward space has been utilized effectively providing substantial storage and a communications/entertainment station. Additionally there is a plethora of live and bait wells, macerator fish boxes, rod holders as well as a practically located cutting board and sink for a satisfying deep sea fishing experience. Good planning has incorporated dual power cord access - one Glendenning on port and another on the starboard side forward. Aft, a broad non-skid finish swim platform incorporates storage of the

swim ladder beneath. Sturdy stainless grab-rails are carefully located to provide the most assistance with the least invasion.

- (4) Rod holders

Electrical System

- Onan 27.5 kW 60 Hz generator
- Onan 17 kW 60 Hz secondary generator
- (3) Newmar battery chargers
- (5) Cruiseair A/C compressors
- Glendenning Cable Masters (2 sets), 50 amp cords (80 feet each)
- (2) Charles 50 amp isoboosts

Electronics

- Nobeltec 25 kW, 72-mile range radar
- (2) Northstar 952 XW GPS (WAAS)
- (2) ICOM M 602 VHF radios
- (1) Remote mics for ICOM VHF's
- Simrad AP2505 autopilot
- Furuno FCT-1200 L dual frequency color sounder
- (2) ACR RCL100 remote spotlights
- 8 X 8 Custom router by Electronic Associates on bridge that allows all flat screens to display all 8 functions on bridge
- (3) 24" Samsung computer monitors on flybridge that can display all 8 functions on the bridge
- Dell computer with Nobeltec Admiral navigation software
- HP Photosmart 2710 printer/fax/copier
- Panasonic Hybrid phone system - cell/sat/dock
- Samsung DirecTV receiver
- VEI 15" monitor for aft control station
- Seatel 24" sat TV dome
- Cisnet weather computer that displays the Weather Channel marine weather system

Deck and Cockpit

- Lofrans polished chrome 24V anchor windlass, 200 kW with remote control
- Polished stainless steel anchor
- 300' galvanized steel chain, 12mm
- Anchor chain wash down

- (2) Deck fish boxes
- Large drinks cooler under mezzanine bench seat
- Swim platform and ladder
- Sunbrella outdoor fabrics
- (4) Deep Sea brand underwater lights
- Fishing rod holders
- Tackle cabinet with sink and bait center
- Transom live bait well
- VEI 15" waterproof monitor
- Fresh water deck wash down
- Salt water deck wash pump
- Air horn
- Cockpit day head
- Cockpit awning
- Air line connection in cockpit and bow for inflating fenders
- Snow White Awlgrip deck
- All horizontal surfaces are non-skid

Engine Room and Mechanical Equipment

Entry to the engine room is also from the aft deck and a satin finished pear wood handrail runs down the center line of the engine room overhead. There is surprising headroom and easy access to all components within. A compressed air outlet is in the engine room, but also has been plumbed to the forward bow locker - convenient for inflating fenders or water toys as the occasion dictates. Fueling with a fuel well on both port and starboard sides amidships. The foredeck is clean - without dinghies, davits or sunpads, providing you with lots of room to personalize this vessel with the water-toy options that enthuse you the most. Aft deck cushions are covered with a soothing mocha Sunbrella carrying a fine black stripe - a low key and elegant look. **Equipment:**

- Cruise Air chill-water air conditioning and heating, 117,000 BTU
- Gulf Coast fuel polishing pumps and filters with built-in AlgeX
- Racor fuel filters on main engines and generators
- Sidepower SM 285 TC bow thruster
- Sidepower SM 285 TC stern thruster
- ZF transmission with trolling valves and 2-speed idle
- ZF Mathers MC 2000 - 2 electric engine controls
- AF Mathers MC 2000 electronic engine control for the second station
- BSC hydraulic steering
- Isotherm 20-gallon stainless steel water heater
- Trolling valves
- Reverso oil change system for engines and generator
- Hull tunnels

- U-valve emergency bilge pumps (2 pieces)
- 120V Fresh water main pump
- 24V fresh water back up pump to 120V fresh water pump
- Fire suppression system, automatic and manual
- Engine room gauge package
- Fuel tank sight gauge
- Water tank gauges and sight glass
- Awlgrip engine room
- Lectra trim tabs
- Elbex remote control camera system with three cameras

Other Features

- Blue LED stair lighting throughout
- Dimmer switches
- 12-volt outlets
- Bosch Maxx WFO 2062 washer
- Bosch WTA 4000 dryer
- Orthopedic mattress in VIP stateroom
- Bost 321 Series Home Theater system
- Sony Progressive Scan DVD/CD player
- (2) Toshiba 14" flat TV's with DVD players (one in VIP and one in guest)
- Mood lighting around beds and headliners
- Custom raw silk fabrics in staterooms
- Five deck hatches with bugscreen and blackout screens

Remarks

This yacht combines all of the advantages of a tournament sportsfisherman with the beauty and comfort of a high end motor yacht. NOTE: The name "ABSOLUTELY NOT" is not included in the sale of the vessel and must be changed upon purchase.

Recent Upgrades

New Bradford Marine, Inc. paint job 2013.

Исключения

При продаже яхты исключаются личные вещи владельца.

Отказ от ответственности

Компания предоставляет описание судна или яхты добросовестно, но не может гарантировать точность этой информации, а также не ручается за техническое состояние. Покупатель должен проинструктировать своих агентов или оценщиков исследовать представленную информацию более подробно, по собственному желанию. Продажа судна или яхты, изменение цены или снятие с продажи будет происходить без предварительного уведомления.

ФОТОГРАФИИ

Main Salon



Main Salon



Dinette



Galley



Galley



Laundry Room/Pantry



Day Head



Stairway



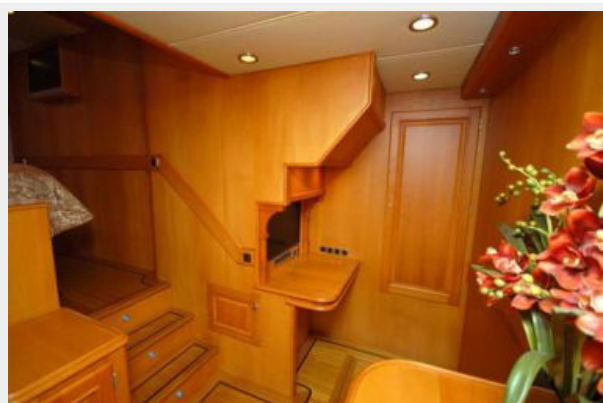
Master Stateroom



Master Stateroom



Master Stateroom



Master Bathroom



VIP Stateroom



Guest Stateroom



Guest Bathroom



Day Head



Pilothouse



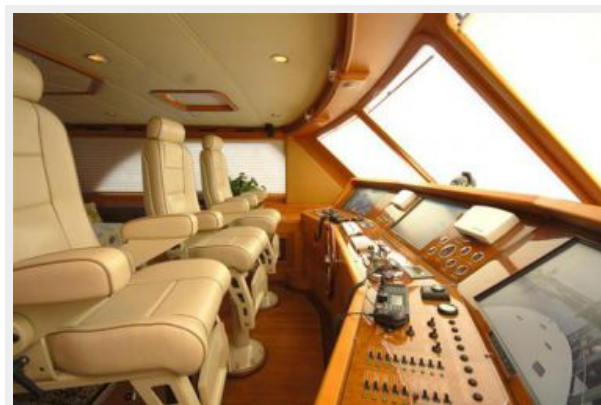
Pilothouse



Pilothouse



Pilothouse



Pilothouse



Pilothouse Bathroom



Engine Room



Cockpit and Deck



КОНТАКТЫ

Андрей Шестаков (Andrey Shestakov) – ведущий яхтенный брокер отдела продаж яхт и судов компании Shestakov Yacht Sales Inc. Официальный представитель Shestakov Yacht Sales Inc. для русскоговорящих клиентов в центральном офисе компании в Майами/Форт Лодердейл/Флорида/США.

Контактная информация

Email: andrey@shestakovyachtsales.com

Web: shestakovyachtsales.com

Телефоны

Краснодарский край: **+7(918)465-66-44**

США, Майами, Флорида: **+1(954)274-4435**

Время работы

Понедельник – Суббота: **9:00 - 21:00**
EDT

Воскресенье: **Закрето**

Адрес



Harbour Towne Marina, 850 NE 3rd St,
STE 213, Dania, FL 33004